



# For lease

Building A - 300 Aero Link NE

Building B - 240 Aero Way NE

Brand New Distribution Space

**YYC Global Distribution Centre - Phase IV**

Various Demising Options Available

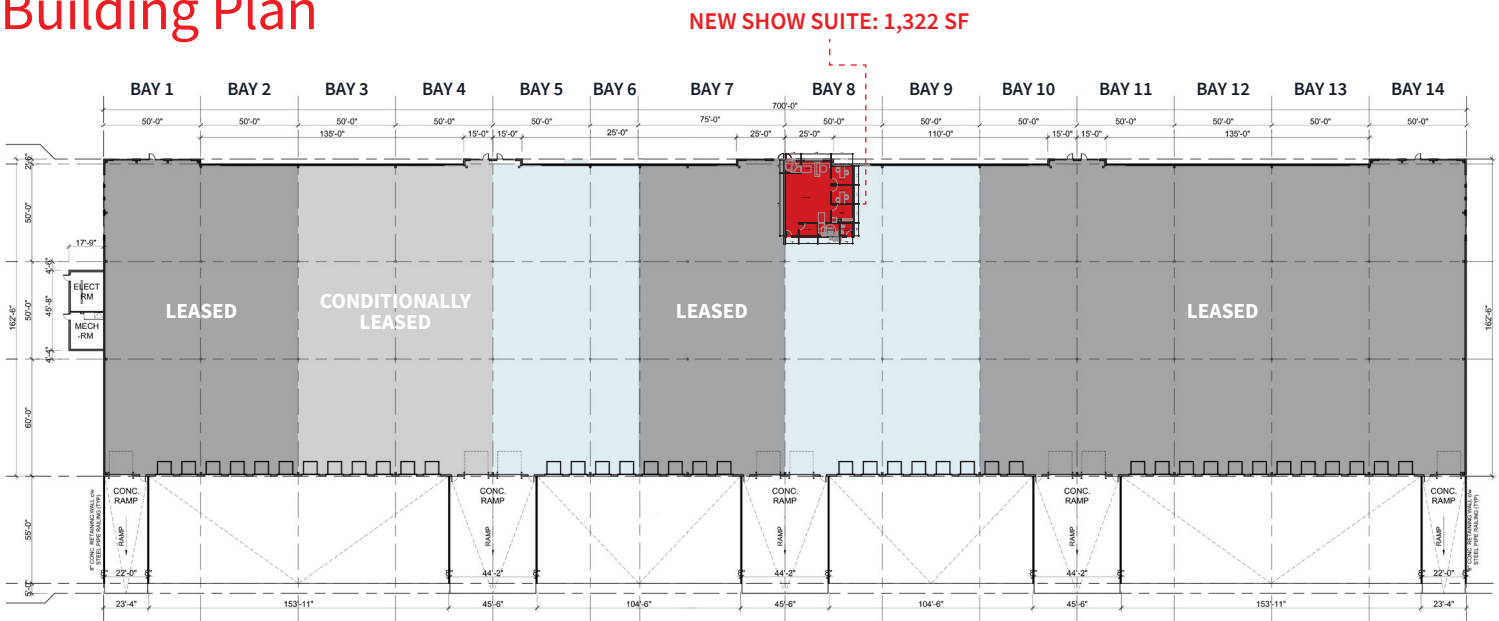
Developed by



# Building A Details

300 Aero Link NE			
District	Airport Lands	Sprinklers	ESFR
Zoning	S-CRI (Airport Light Industrial)	Dock Levelers	35,000 lbs 6' x 8' Serco manual
Building Size	± 113,275 s.f.	Door Sizes	16 (9' x 10') dock doors 3 (12' x 12') drive-in doors
Available SF	± 44,433 s.f. *± 8,091 s.f. or ± 28,263 s.f. contiguous	Typical Column Grid	50' x 50' (60' staging)
Typical Bay Size	± 8,000 s.f.	Heating	Gas fired unit heaters in warehouse
Building Depth	159'	Power	347/600 volts, 3 Phase, 2000A Main Distribution
Ceiling Height	24' clear	Op. Costs	\$4.25 p.s.f. (2025 est.)
Total Site Trailer Parking	48 stalls available	Rent	Market

## Building Plan

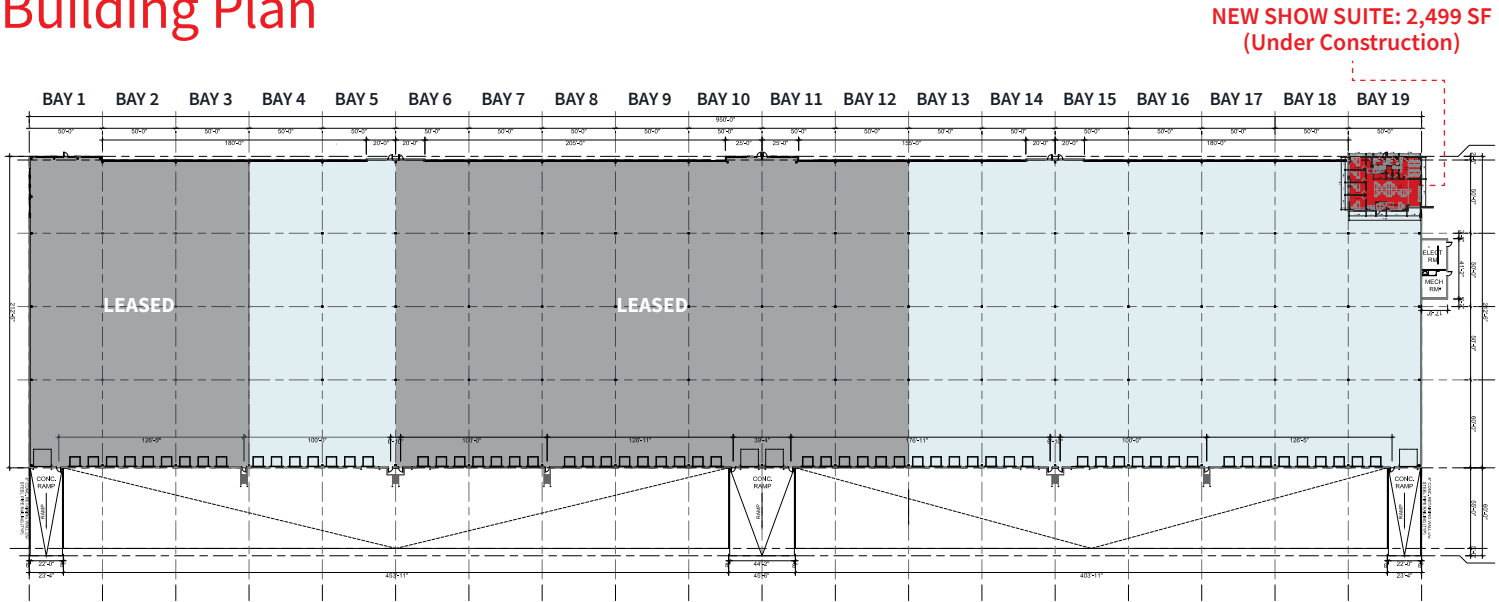


Potential Demising Options	Size (Square Feet)	Loading
Bay 4	8,091	2 Dock Doors, 1 Drive-In Door
Bays 5 & 6	12,118	4 Dock Doors, 1 Drive-In Door
Bays 3 & 4	16,145	6 Dock Doors, 1 Drive-In Door
Bays 8 & 9 (Includes 1,322 s.f. Show Suite)	16,170	6 Dock Doors, 1 Drive-In Door
Bays 3 to 6	28,263	10 Dock Doors, 2 Drive-In Doors

# Building B Details

240 Aero Way NE			
District	Airport Lands	Sprinklers	ESFR
Zoning	S-CRI (Airport Light Industrial)	Dock Levelers	35,000 lbs 6' x 8' Serco manual
Building Size	± 200,640 s.f.	Door Sizes	30 (9' x 10') dock doors 1 (12' x 12') drive-in doors
Available SF	± 95,045 s.f. *± 21,110 s.f. or ± 73,935 s.f. contiguous	Typical Column Grid	50' x 50' (60' staging)
Typical Bay Size	± 10,530 s.f.	Heating	Gas fired unit heaters in warehouse
Building Depth	209'	Power	347/600 volts, 3 Phase, 2000A Main Distribution
Ceiling Height	32' clear	Op. Costs	\$4.25 p.s.f. (2025 est.)
Total Site Trailer Parking	48 stalls available	Rent	Market

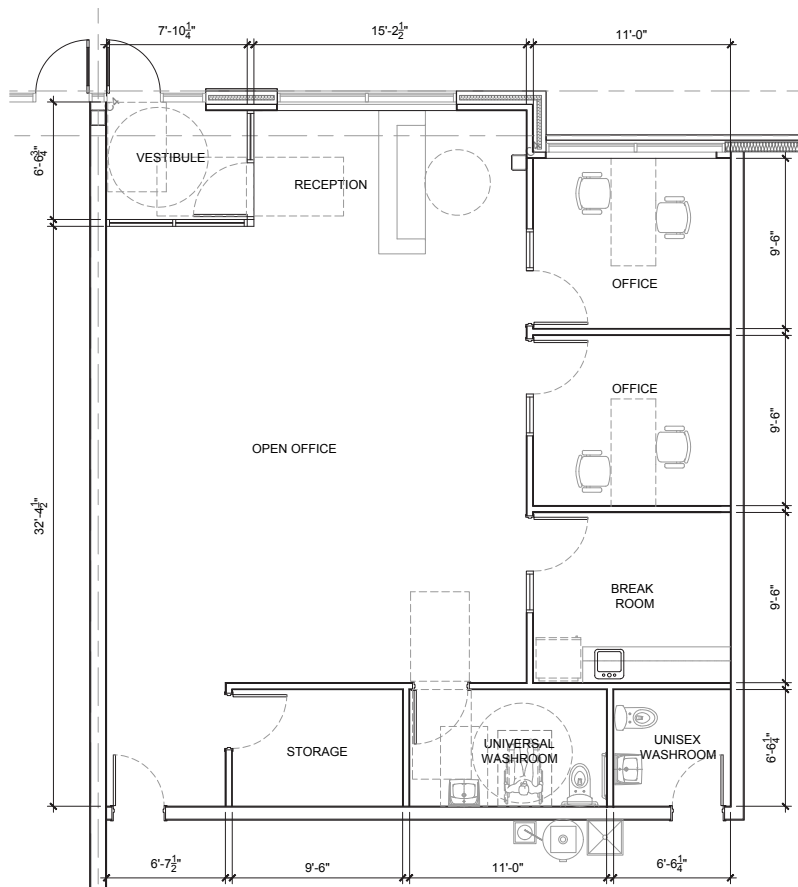
## Building Plan



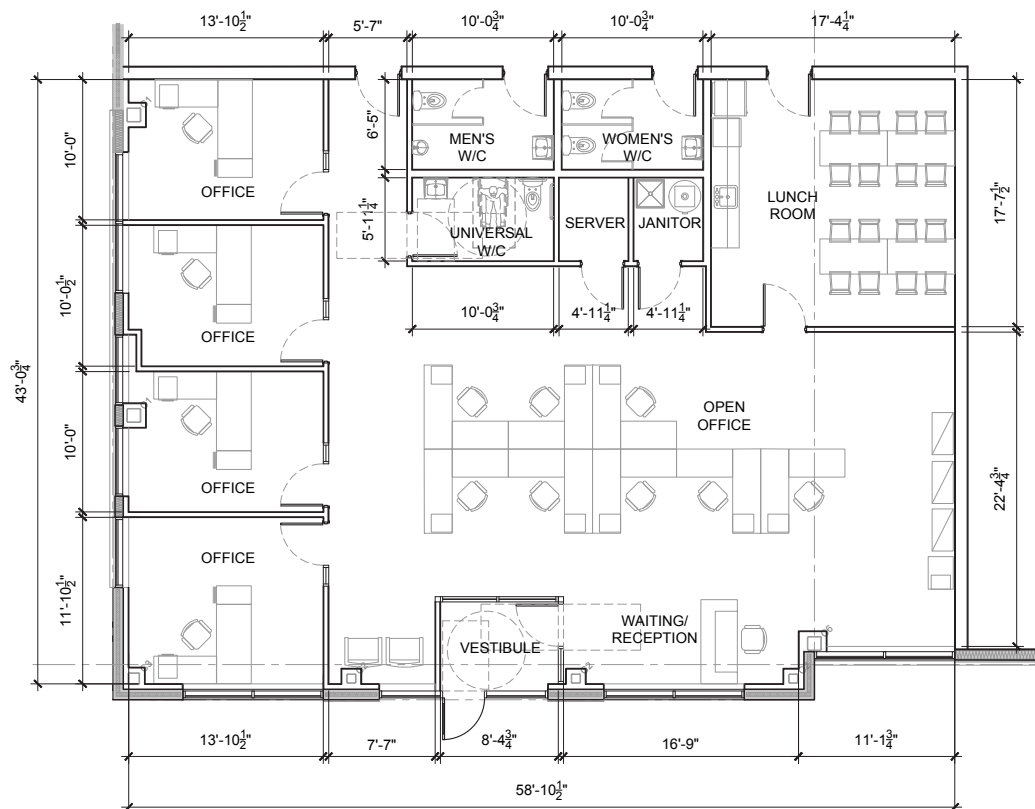
Potential Demising Options	Size (Square Feet)	Loading
Bays 4 & 5	21,110	7 Dock Doors
Bays 13 to 15	31,690	10 Dock Doors
Bays 13 to 16	42,220	14 Dock Doors
Bays 13 to 17	52,750	17 Dock Doors
Bays 13 to 19 (Includes 2,499 s.f. Show Suite)	73,935	23 Dock Doors, 1 Drive-In Door



## Building A Show Suite – 1,322 s.f. of Office Space (Construction Complete)











## Building B Show Suite – 2,499 s.f. of Office Space (Under Construction)

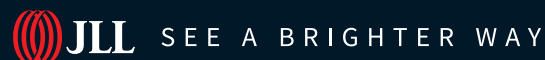




## Drive Times

	Bus Stop	1 min. walk		Nearest C-Train Station	11 min. / 9 km
	Calgary International Airport	5 min. / 6 km		CP Railway Intermodal	26 min. / 35 km
	Deerfoot Trail (Highway 2)	5 min. / 3 km		Downtown Calgary	26 min. / 15 km
	Stoney Trail East	9 min. / 8 km		Trans-Canada Highway (Hwy1)	12 min. / 9.5 km

## Contact us



**Carey Koroluk**  
Lead Broker  
Vice President  
+1 403 456 2346  
carey.koroluk@jll.com

**Austin Smith**  
Lead Broker  
Vice President  
+1 403 456 2197  
austin.smith@jll.com

**Troy Robinson**  
Lead Broker  
Associate  
+1 403 670 7353  
troy.robinson@jll.com

**Marshall Toner**  
EVP, National Industrial  
+1 403 456 2214  
marshall.toner@jll.com

**Ryan Haney**  
Executive Vice President  
+1 403 456 2221  
ryan.haney@jll.com

**Chris Saunders**  
Executive Vice President  
+1 403 456 2218  
chris.saunders@jll.com

jll.ca