

1120SLU

1120 JOHN STREET · SEATTLE, WASHINGTON

OFFICE SPACE FOR LEASE



1120 SLU

CONNECTING PEOPLE SHAPING THE FUTURE

A NEW GENERATION OF OFFICE SPACE, 1120 at Onni South Lake Union is introducing an open, smart, and creatively designed work environment in the heart of Seattle's Innovation District.

TWO

Office towers

935,951

Square feet



DESIGNED WITH
COLLABORATION IN MIND




17 FLOORS
1120 West Tower


16 FLOORS
1120 East Tower

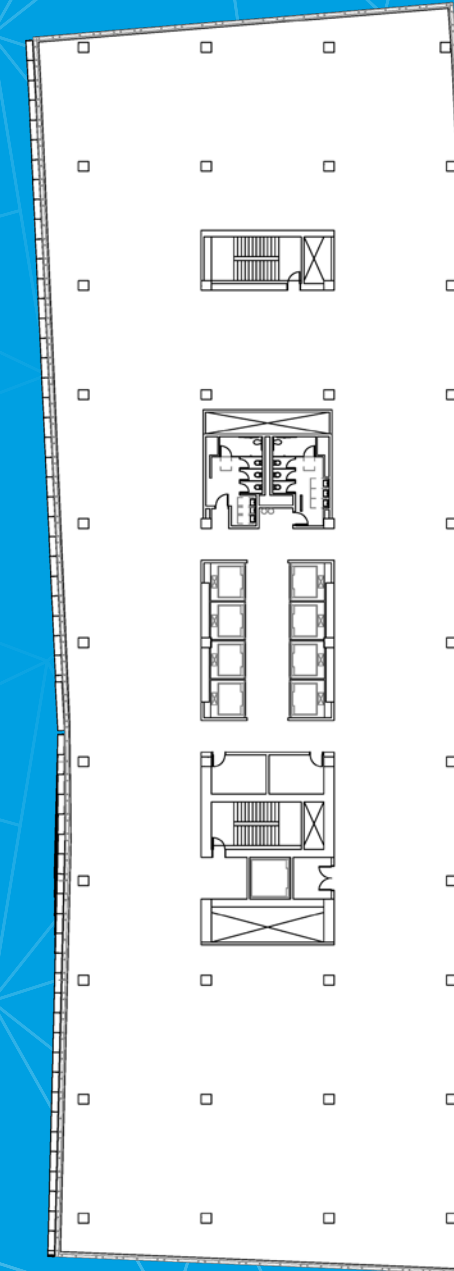

12'6"
Window height &
floor-to-ceiling height


±31,000 SF
Floor Plates

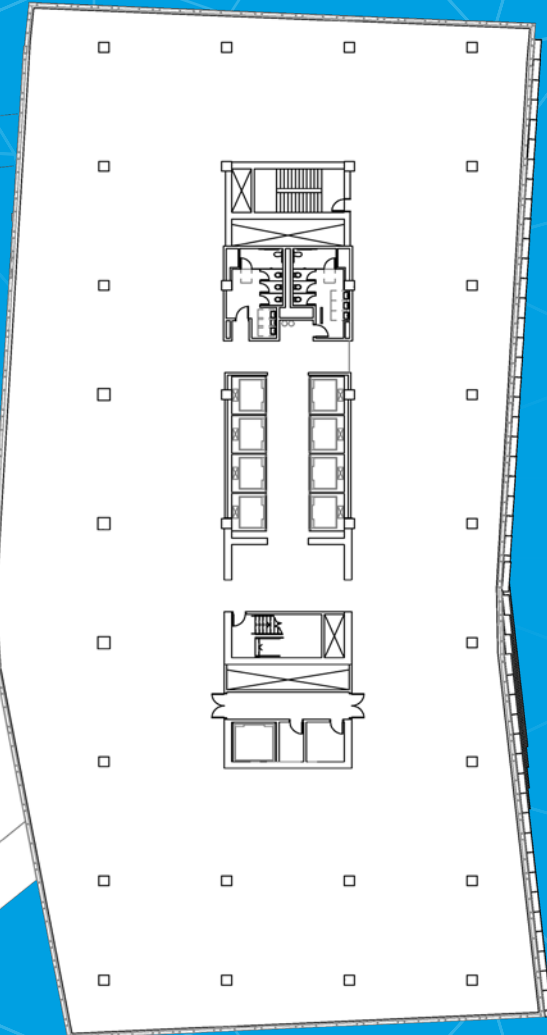

LEED GOLD
Pursuing Certification

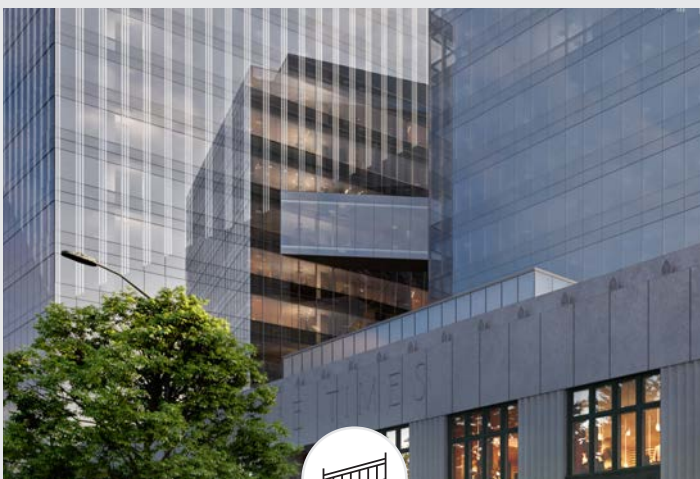
REPRESENTATIVE
FLOOR PLANS

WEST TOWER
±31,500 RSF



EAST TOWER
±30,618 RSF





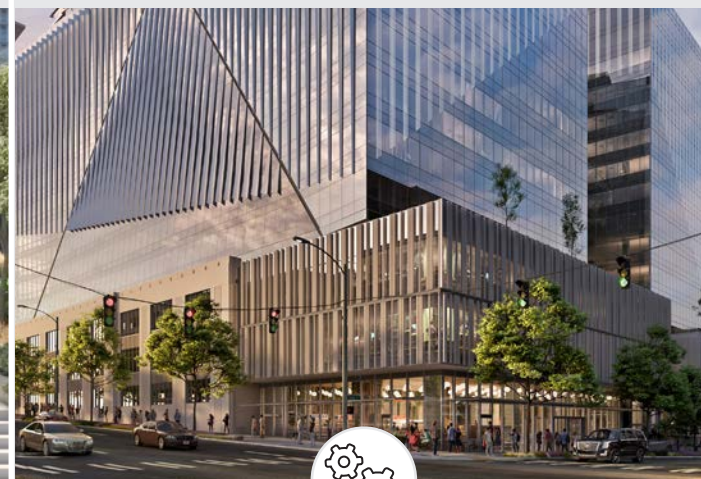
3 TOWER CONNECTIONS

Connecting East and West buildings



OUTDOOR SPACE

Ground plane or in the sky, no project offers more outdoor space than 1120. Featuring two rooftop decks, mid-building outdoor patios and amenity space



SUSTAINABILITY

LEED Gold Certified, with state-of-the-art thermal energy sharing system that reduces carbon footprint



SWIM. BIKE. WALK.

Two city blocks of amenities including park, basketball and fitness



SEATTLE TIMES PARK

Magnificent, mature cedar trees, new communal space and bike racks surround the park



RETAIL

Curated retail to support office workers and residences from work to play

SOUTH LAKE UNION'S MOST WELL-CONNECTED DEVELOPMENT





A NEIGHBORHOOD THAT SPARKS THE CITY & MINDS

Adding a dynamic pedestrian experience with open, airy connections that bridge 1120 at OSLU with nearby neighbors.



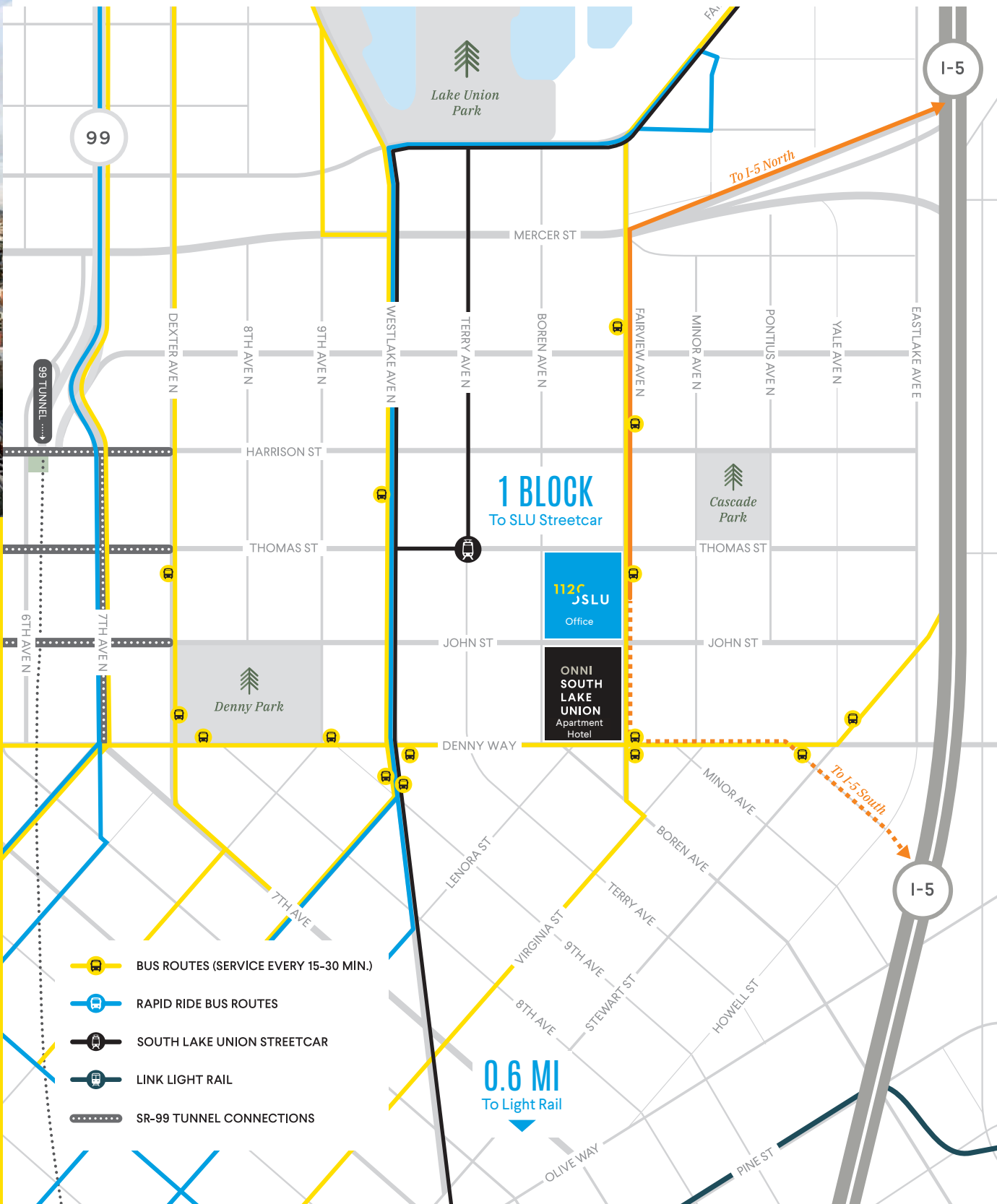
3 minutes to downtown



6 minutes to downtown



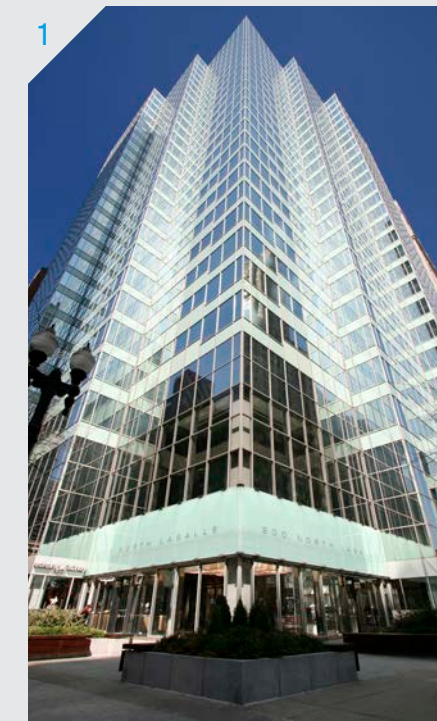
14 minutes to downtown



THE ONNI STORY

The Onni group is one of North America's leading private real estate developers, with extensive experience designing, developing, building, and managing innovative projects.

As a fully integrated company that directly oversees every step in the development process, Onni has built over 15,000 homes. In addition, the company owns and manages more than 12 million square feet of commercial property, over 7,200 rental apartment units, and has an additional 28 million square feet in various stages of development. With offices in Vancouver, Toronto, Chicago, Los Angeles, Seattle, Phoenix and Mexico, Onni continues to expand and diversify into new markets throughout North America.



THE ONNI PORTFOLIO SELECT PROJECTS

1. 200 N. LaSalle, Chicago, IL
2. LA Times Building, Los Angeles, CA
3. Gilmore Place, Burnaby, BC
4. Central, Vancouver, BC
5. Suter Brook Village, Port Moody, BC



JOE GOWAN
+1 206 607 1738
joe.gowan@jll.com

LISA STEWART
+1 206 607 1786
lisa.stewart@jll.com

LLOYD LOW
+1 206 607 1796
lloyd.low@jll.com



© 2022 Jones Lang LaSalle IP, Inc. All rights reserved.
All information contained herein is from sources
deemed reliable; however, no representation or
warranty is made to the accuracy thereof. Jones
Lang LaSalle Brokerage, Inc.