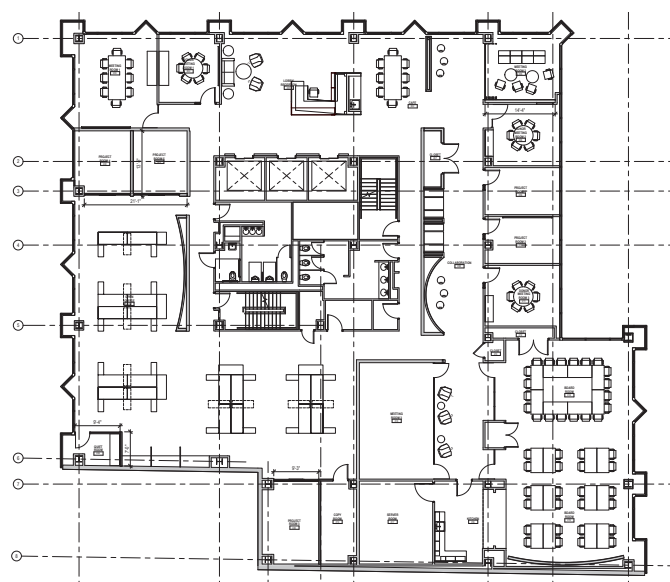


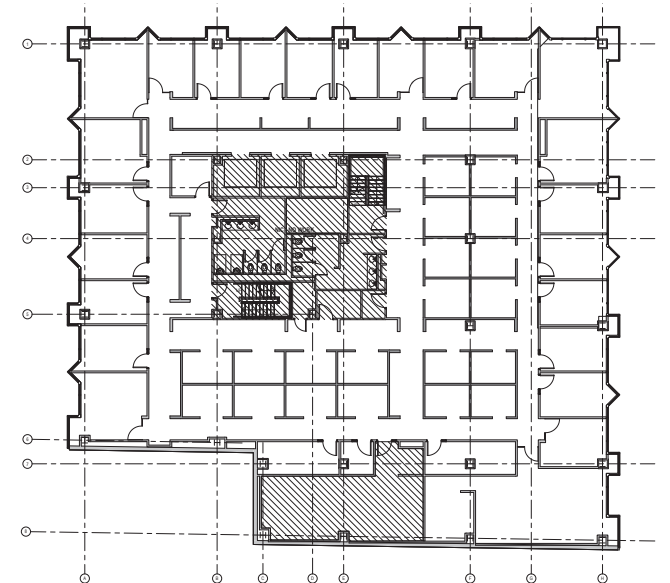


AVAILABILITIES WITHIN
five ppg place



SUITE 200

- 12,090 SF
- Full Floor



SUITE 300

- 13,206 SF
- Full Floor

TRIPP MERCHANT

412-208-8231
Tripp.Merchant@jll.com

JACKIE BEZEK

323-842-5743
Jackie.Bezek@jll.com

Although information has been obtained from sources deemed reliable, neither Owner nor JLL makes any guarantees, warranties or representations, express or implied, as to the completeness or accuracy as to the information contained herein. Any projections, opinions, assumptions or estimates used are for example only. There may be differences between projected and actual results, and those differences may be material. The Property may be withdrawn without notice. Neither Owner nor JLL accepts any liability for any loss or damage suffered by any party resulting from reliance on this information. If the recipient of this information has signed a confidentiality agreement regarding this matter, this information is subject to the terms of that agreement. ©2022 JonesLang LaSalle IP, Inc. All rights reserved.



FIVE PPG PLACE
YOUR PIECE OF A
PITTSBURGH ICON

FIVE
PPG PLACE

LEASING &
MANAGEMENT BY:

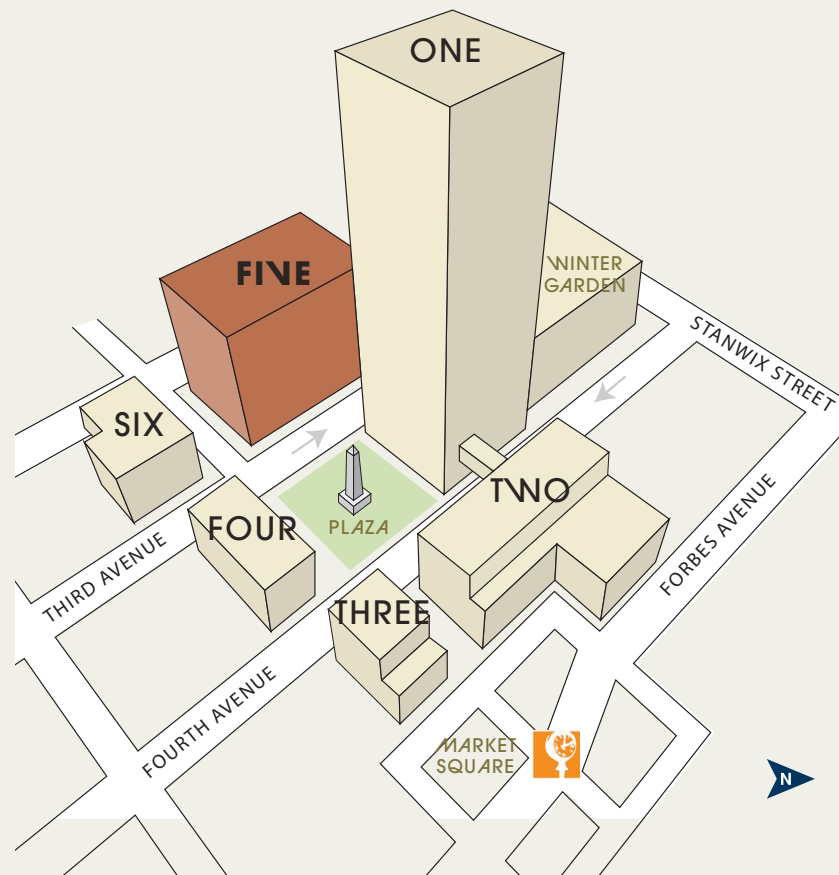


OWNED BY:



FIVE PPG PLACE

At six stories high, Five PPG Place offers a rare opportunity for smaller firms to occupy a full floor providing customizability and exclusive control of space.



\$65M+ in building and capital improvements to the complex since 2011

700 space underground parking garage integrated within the complex. **\$1.4M** garage renovation completed in July 2021 with new SmartPark technology

Newly renovated building lobby

5,000sf fully-equipped conference center, *Spark*, available for tenant only use

A new **state-of-the-art full-service fitness facility**, *Velocity*, opening in 2023

Secure bike rack room with provided maintenance tools

Courtesy shuttle available for customer use

Outdoor plaza seating with a unique, interactive water display during summer

Renovated and enlarged **outdoor skating rink**, a Pittsburgh winter tradition featuring a new state-of-the-art, energy efficient **LED-lit holiday tree**

\$3M renovation to enclosed solarium, "Wintergarden", host to many special events

8 on-site dining options by fall of 2023, ranging from fine dining to fast casual

1 block from Gateway "T" Station and convenient to all major highways

Superior location at the forefront of Downtown

Connected to vibrant Market Square and all of its attractions



CORNERSTONE OF THE COMPLEX

Five PPG is prominently situated on Market St between 3rd Ave & Blvd of the Allies. The six-story building not only fronts the PPG Place Plaza but also faces the Monongahela River, providing expansive city views. The building offers nearly 65,000 SF of office space along with street level retail opportunities and direct elevator access to underground parking.

