



EVERWOOD BUILDING

Sam Ziemba
+1 425 974 4005
Sam.Ziemba@jll.com

Jake Bos
+1 425 974 4086
Jake.Bos@jll.com

Bailey Hicks
+1 425 974 4009
Bailey.Hicks@jll.com



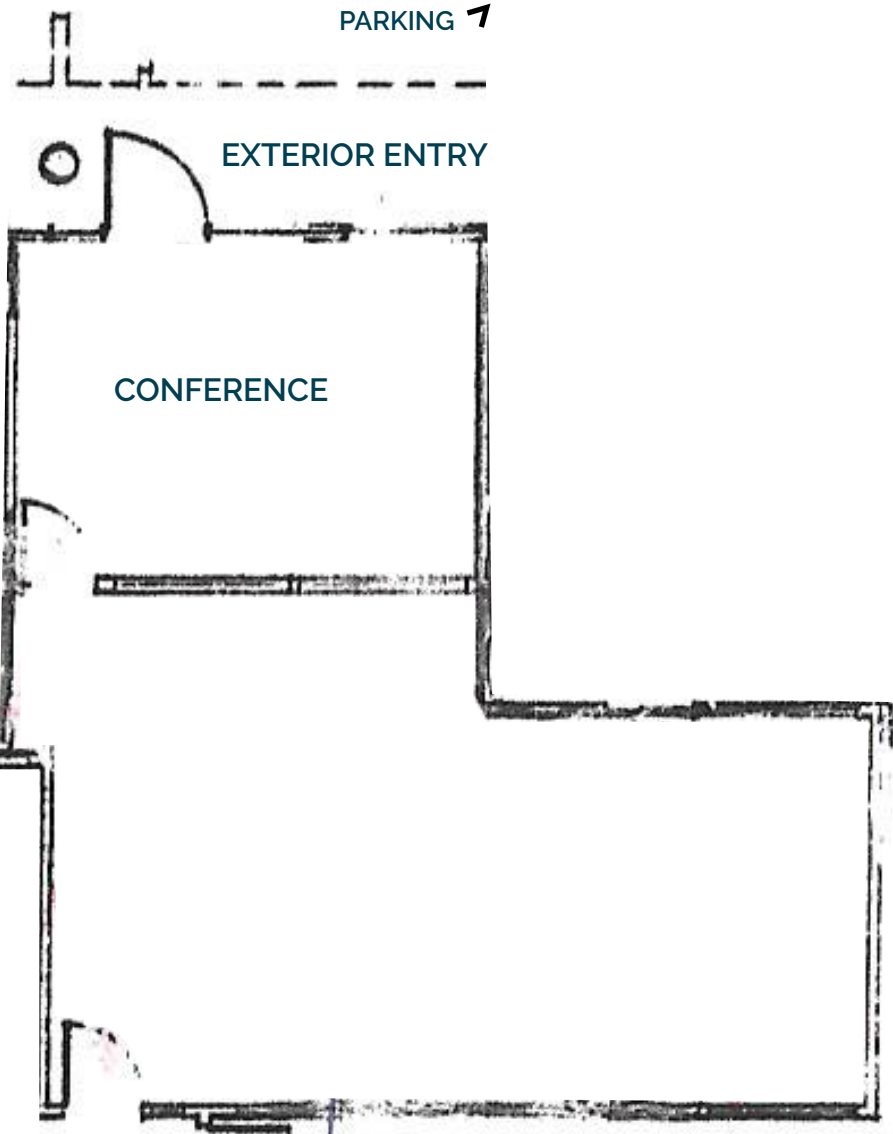
2050 112TH AVE NE, BELLEVUE, WA

Suite 115

774 SF

Ample natural light
Conference room
Direct access to parking lot

Floor-to-ceiling windows with views of greenery
Open workspace



Building Features

Tranquil, park like setting
Skylight feature in lobby
Ample surface parking
Daycare adjacent to building



LOBBY



SUITE 115