

**3,912 RSF FOR SUBLEASE**



# **Altamonte North Business Center**

385 Douglas Avenue  
Altamonte, FL 32714





Reception area



Private Office



Kitchenette



Conference Room



## Suite 2300/2400



3,912 s.f.  
**SIZE**



05/31/2025  
**EXP. DATE**



Negotiable  
**RATE**



Interstate-4 Frontage  
**DIRECT ACCESS**

- Turn-key & furnished space in the heart of Altamonte
- Easy access to I-4 and Uptown Altamonte amenities
- Building under new ownership with capital improvements recently completed to common area
- On-site management and building engineer





## Located in *Uptown Altamonte*

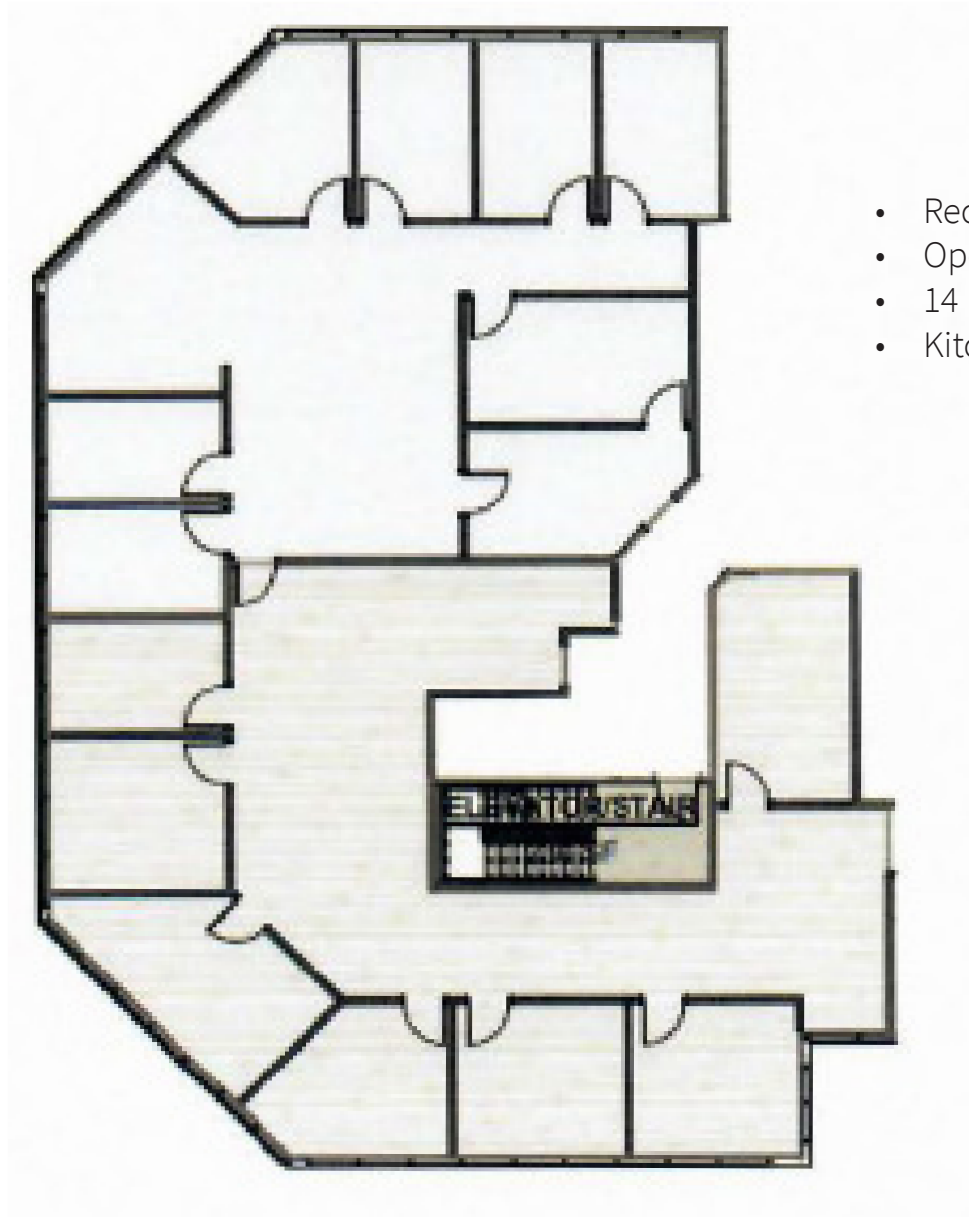
**10 MILES**  
DOWNTOWN ORLANDO

**8.3 MILES**  
WINTER PARK

**22.4 MILES**  
ORLANDO INTERNATIONAL AIRPORT



# Floor Plan



- Reception Area
- Open Work Space
- 14 Private Offices
- Kitchenette

**For more information, please contact:**

**Jacob Attaway**

407.982.8696

[jacob.attaway@jll.com](mailto:jacob.attaway@jll.com)

**Darryl Hoffman**

407.982.8588

[darryl.hoffman@jll.com](mailto:darryl.hoffman@jll.com)