

THE  
RMR  
GROUP

1300

SUMMIT

Kansas City, MO



# BUILDING HIGHLIGHTS



Fantastic location on the West side of Downtown Kansas City, MO



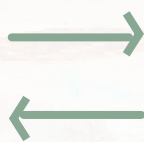
Easy interstate access and proximity to West Side and Downtown amenities



Secured, gated entry to all access points of the lot



Secured, 52,000 SF covered parking garage below the building



Full dock with drive-in and dock-high accessibility;  
Separate drive-in mechanical bay



Incredible views on all sides of the building

## AVAILABILITY

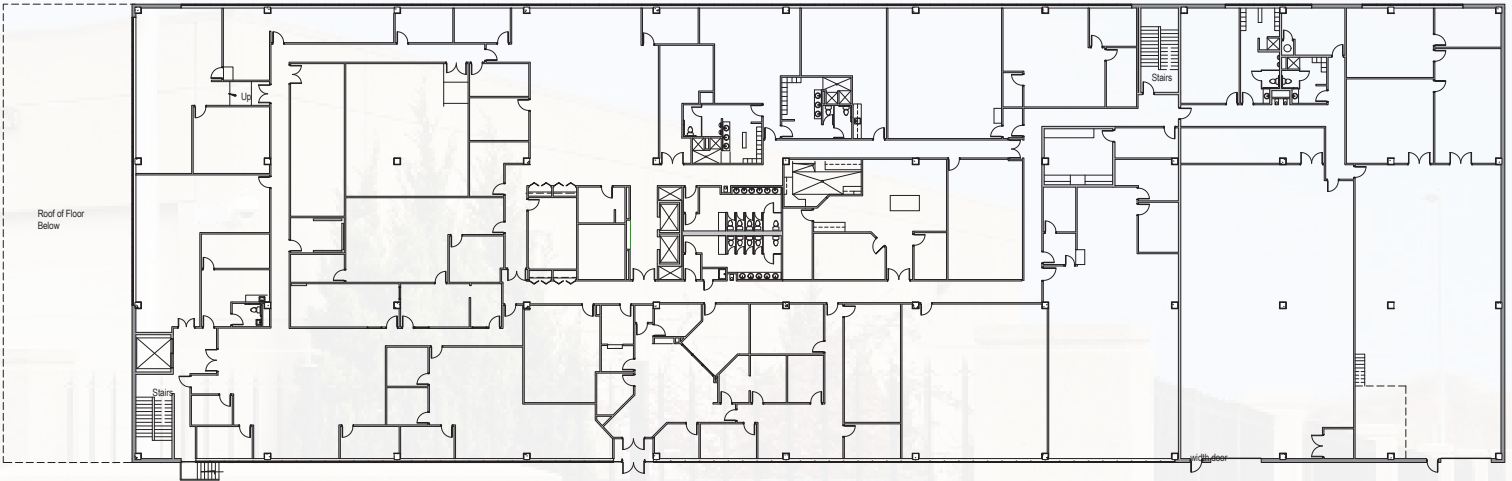
86,739 RSF

Full Building Availability

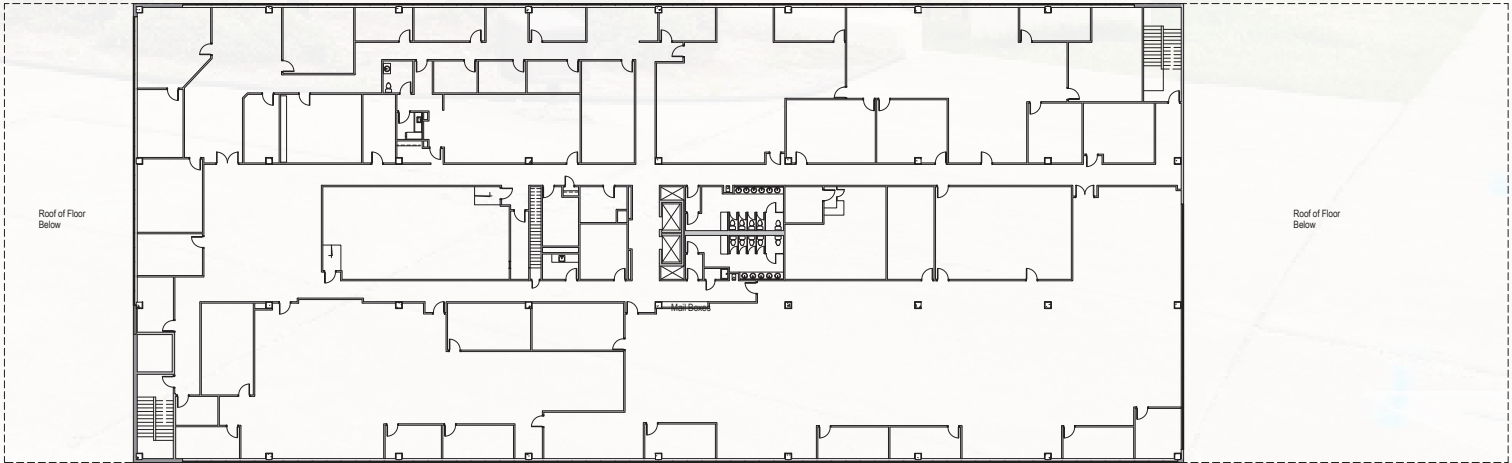
\$23.50 PSF

Full Service Lease Rate

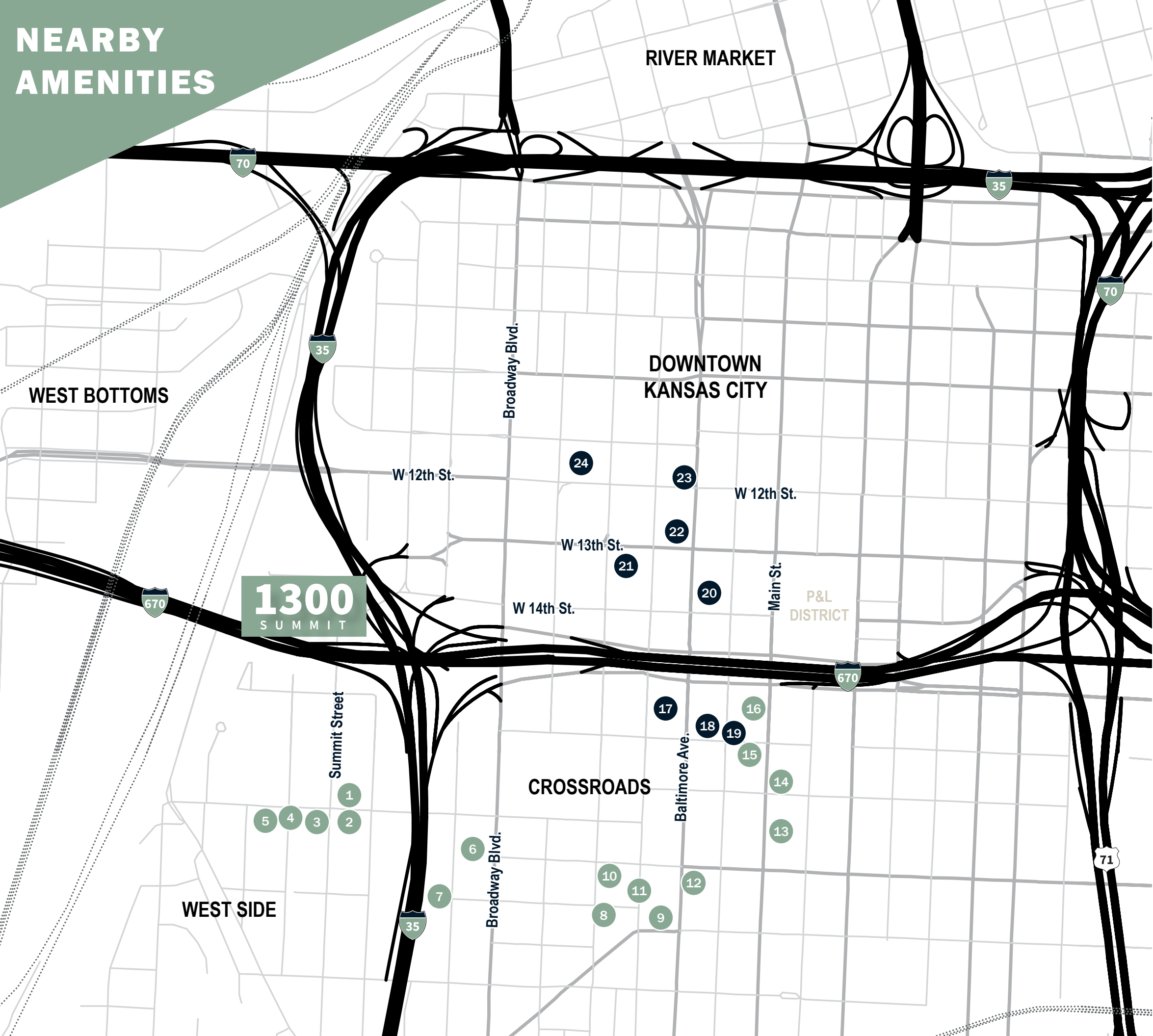
1st Floor  
49,099 SF



2nd Floor  
37,640 SF



NEARBY  
AMENITIES



RESTAURANTS

- 1. The Westside Local
- 2. Chez Elle Creperie and Coffeehouse
- 3. Blue Bird Bistro
- 4. Clay & Fire
- 5. Goat Hill Coffee & Soda
- 6. Los Tules
- 7. Seven Swans Creperie
- 8. Mildred’s Food & Drink
- 9. Town Topic
- 10. Buffalo State Pizza
- 11. Baramée Thai Bistro
- 12. Pizza Shuttle
- 13. Taps on Main
- 14. Lula Southern Cookhouse
- 15. Anton’s
- 16. Streetcar Grille & Tavern

HOTELS

- 17. Loews Kansas City
- 18. Courtyard by Marriott
- 19. Hampton Inn and Suites
- 20. Hilton President
- 21. Crowne Plaza Kansas City Downtown
- 22. Hotel Kansas City
- 23. Hotel Phillips
- 24. Kansas City Marriott Downtown



# 1300

S U M M I T

Kansas City, MO



For leasing information, contact:



**RJ Trowbridge**

Vice President

+1 913 469 4637

[rj.trowbridge@am.jll.com](mailto:rj.trowbridge@am.jll.com)

THE  
RMR  
GROUP

Although information has been obtained from sources deemed reliable, Owner, Jones Lang LaSalle, and/or their representatives, brokers or agents make no guarantees as to the accuracy of the information contained herein, and offer the Property without express or implied warranties of any kind. The Property may be withdrawn without notice. If the recipient of this information has signed a confidentiality agreement regarding this matter, this information is subject to the terms of that agreement.  
©2022 Jones Lang LaSalle. All rights reserved.