

---

# WATERSIDE 3 & 4

---

## WATERSIDE 3

15200 SANTA FE TRAIL DR, LENEXA KS

## WATERSIDE 4

15500 W 113TH ST, LENEXA KS



SOUTH LAKE

# PROPERTY HIGHLIGHTS

**\$22.00/SF Full Service**

5.2/1,000 Parking Ratio

Building Signage Available with  
Visibility to I-35

Open Floor Plates with Corner Floor-to-  
Ceiling Glass

Modern Finishes in Common Area

Updated Tenant Finishes Available

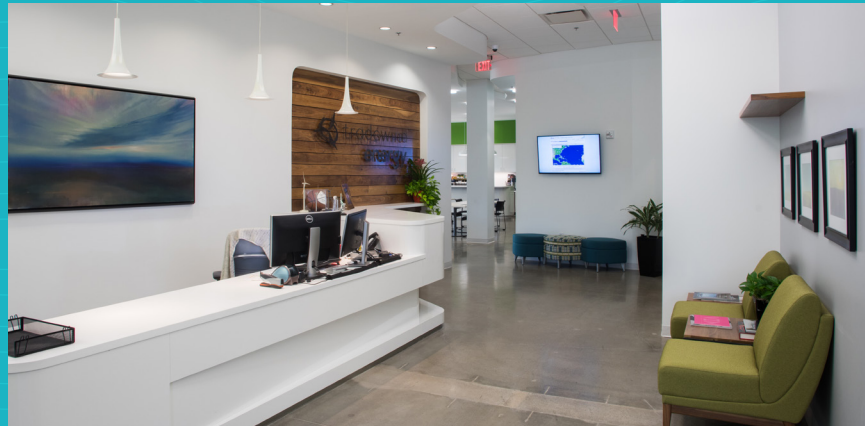
On-Site Trails and Lakes

Adjacent to 119th Street Retail  
Amenities and Renner Rd Corridor

Easy Access from I-435 and I-35

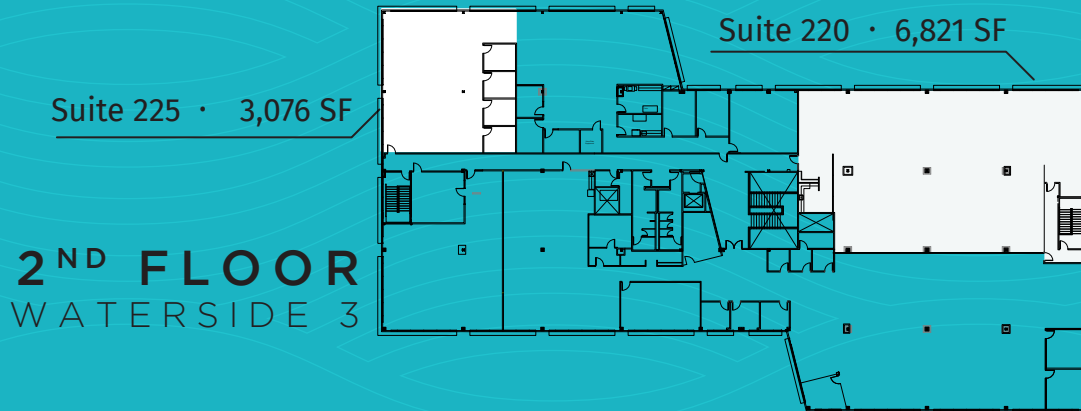
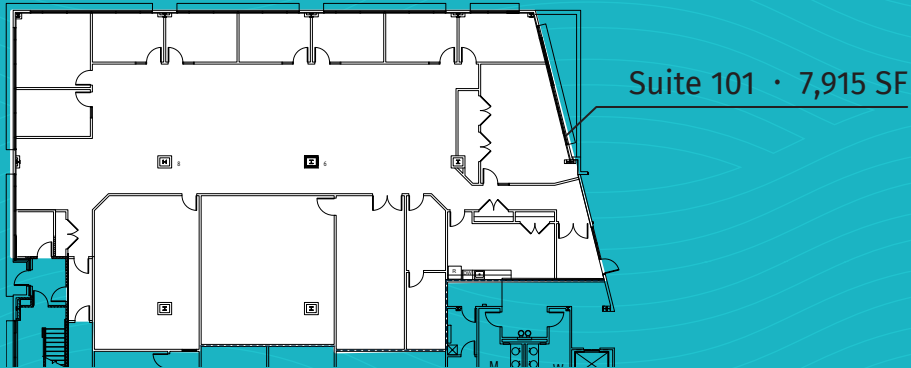
On-Campus Event Space – Thompson  
Barn

New Ownership with Capital  
Improvement Plans



# AVAILABLE SPACE

## 1<sup>ST</sup> FLOOR WATERSIDE 3



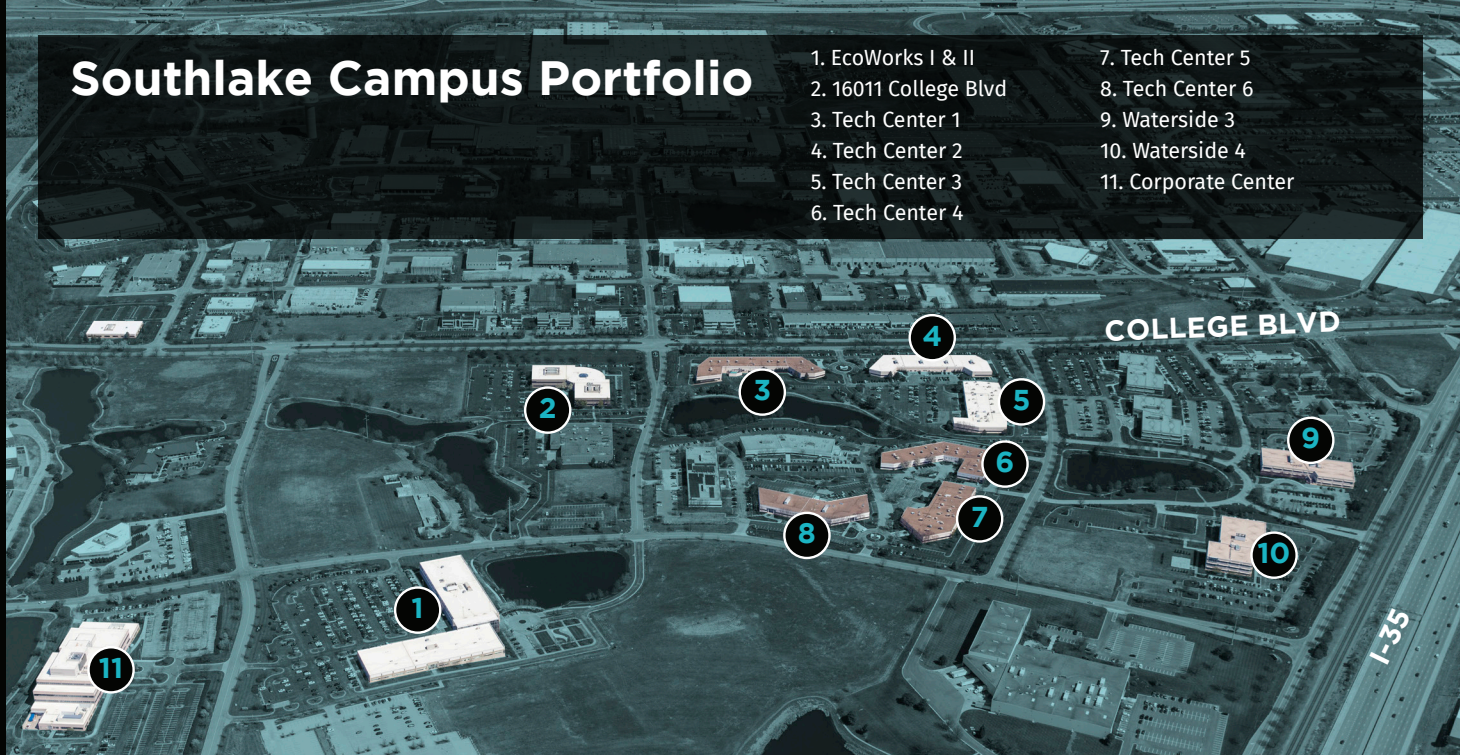
## 2<sup>ND</sup> FLOOR WATERSIDE 3

# NEW OWNERSHIP

Purchased in January 2019, the Southlake office park now has a dynamic new development company, City + Ventures, as its' owner. City + Ventures' plans for the park include investing in new building amenities, providing Class A common areas and tenant finishes, and developing the interior land sites with complimentary uses for the existing office tenants.

## Southlake Campus Portfolio

1. EcoWorks I & II
2. 16011 College Blvd
3. Tech Center 1
4. Tech Center 2
5. Tech Center 3
6. Tech Center 4
7. Tech Center 5
8. Tech Center 6
9. Waterside 3
10. Waterside 4
11. Corporate Center

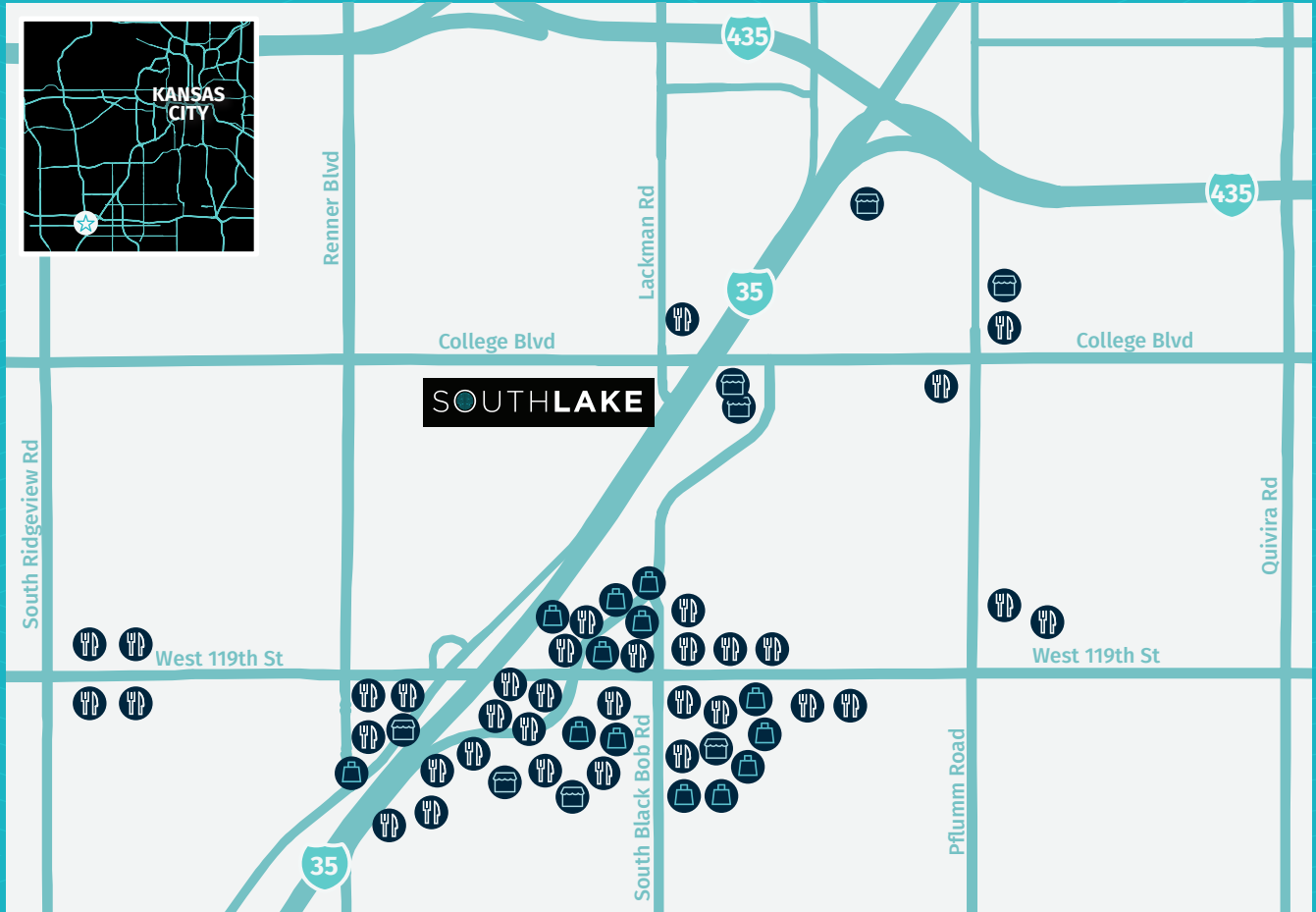




Thruline Marketing | Voted One of the Coolest Office Spaces in KC



# SURROUNDING AMENITIES



Pie Five Pizza  
IHOP  
Chipotle Mexican Grill  
Freddy's Frozen Custard & Steakburgers  
Olive Garden  
Zoes Kitchen  
Twin Peaks  
Muscle Maker Grill  
Mr Gyros Greek Food  
Chick-fil-A  
First Watch

Smashburger  
Texas Roadhouse  
Joe's Kansas City Bar-B-Que  
Johnny's Italian Steakhouse  
Cracker Barrel  
Steak n' Shake  
Schlotzsky's  
Houlihan's  
Main Event  
Starbucks  
Jason's Deli

Dunkin' Donuts  
Buffalo Wild Wings  
Red Lobster  
Sake Lounge  
SPIN! Pizza  
Mi Ranchito  
Sierra Grill  
Target  
Bed Bath and Beyond  
Home Depot  
GameStop

Cosmic Jump Indoor Trampoline Park  
AMC Studio 28  
Whole Foods Market  
Ulta Beauty  
Marshalls & HomeGoods  
Michael's  
Dick's Sporting Goods  
Pier 1  
Ross Dress for Less  
Main Event Entertainment  
Bass Pro Shops



45+

**RESTAURANTS  
& CAFES**



15+

**SHOPPING &  
RETAIL**



5+

**ENTERTAINMENT  
& HEALTH**

**SURROUNDING AMENITIES**

# SOUTHLAKE

For office leasing information:

**RJ Trowbridge**

+1 913 469 4637

[rj.trowbridge@am.jll.com](mailto:rj.trowbridge@am.jll.com)

**Jeff Kembel, SIOR**

+1 913 469 4604

[jeff.kembel@am.jll.com](mailto:jeff.kembel@am.jll.com)

**Patrick Meraz, CCIM**

+1 913 469 4622

[patrick.meraz@am.jll.com](mailto:patrick.meraz@am.jll.com)



Although information has been obtained from sources deemed reliable, JLL does not make any guarantees, warranties or representations, express or implied, as to the completeness or accuracy as to the information contained herein. Any projections, opinions, assumptions or estimates used are for example only. There may be differences between projected and actual results, and those differences may be material. JLL does not accept any liability for any loss or damage suffered by any party resulting from reliance on this information. If the recipient of this information has signed a confidentiality agreement with JLL regarding this matter, this information is subject to the terms of that agreement. ©2021 Jones Lang LaSalle Brokerage, Inc. All rights reserved.