



25,000 RSF

Industrial warehouse space for lease

**Est. completion:
September 2023**

250 Research Parkway

Davenport, Iowa 52806



Location

- 250 Research Parkway is located north of I-80 and Highway 61, with close proximity to the Davenport Municipal Airport
- Co-tenant is Windows by Anderson

Property specifications

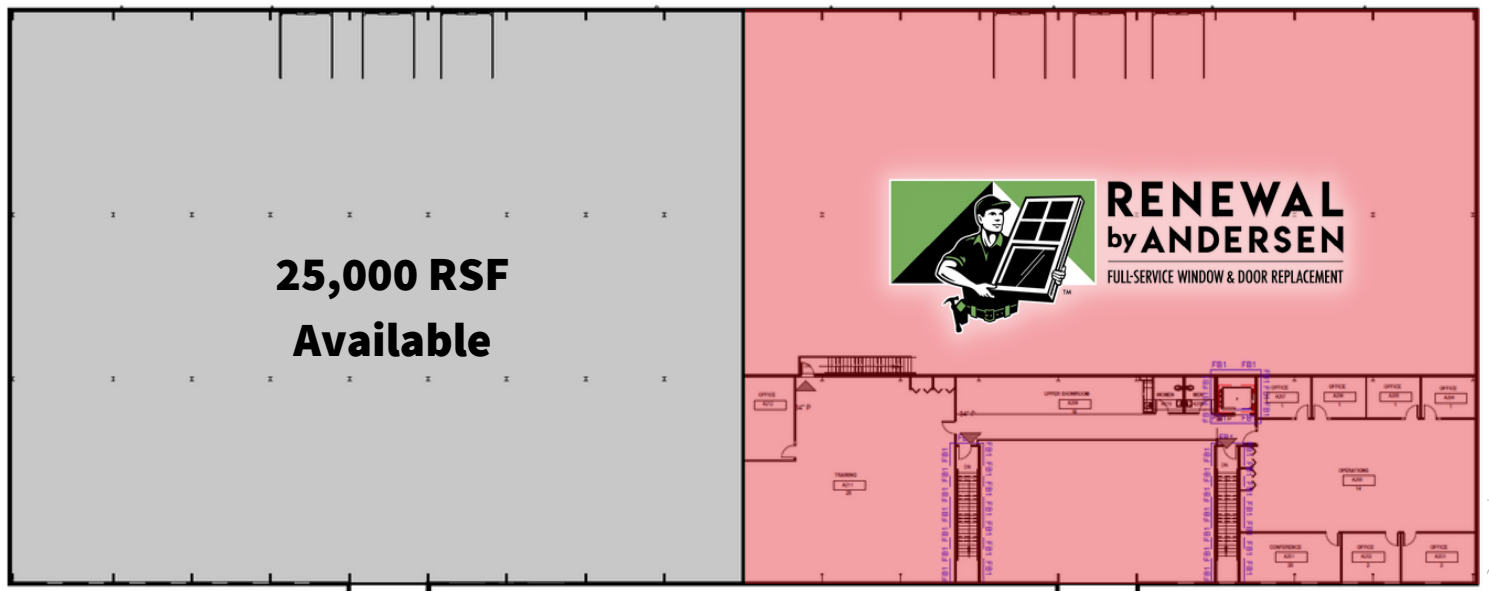
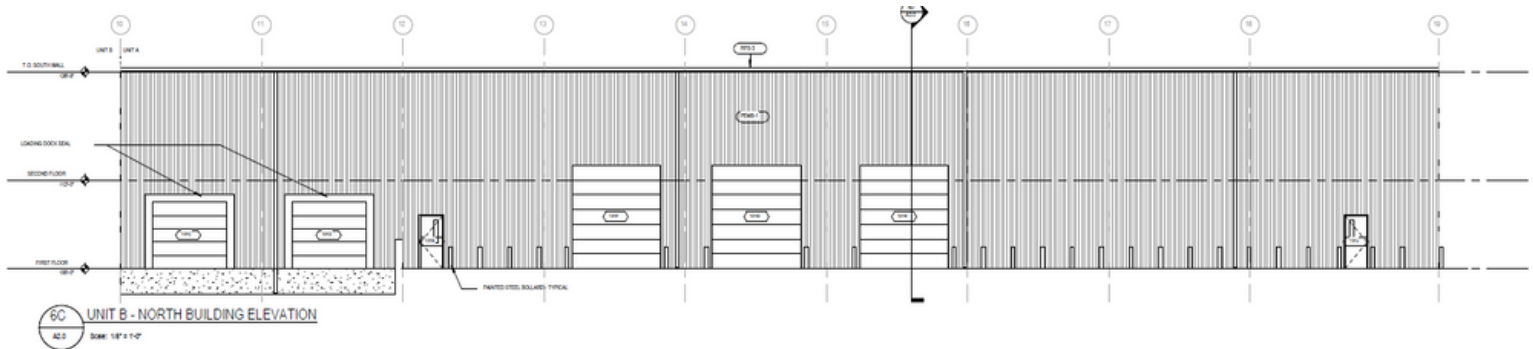
- Availability: 25,000 RSF
- Lease rate: Negotiable
- Est. OPEX: \$1.25/RSF
- Building size: 50,000 SF
- Clear height: 22' - 24'
- Column spacing: 50 x 50
- Docks: 2
- Overhead doors: 3 (12' x 16')

25,000 RSF

Industrial warehouse space for lease



Elevations

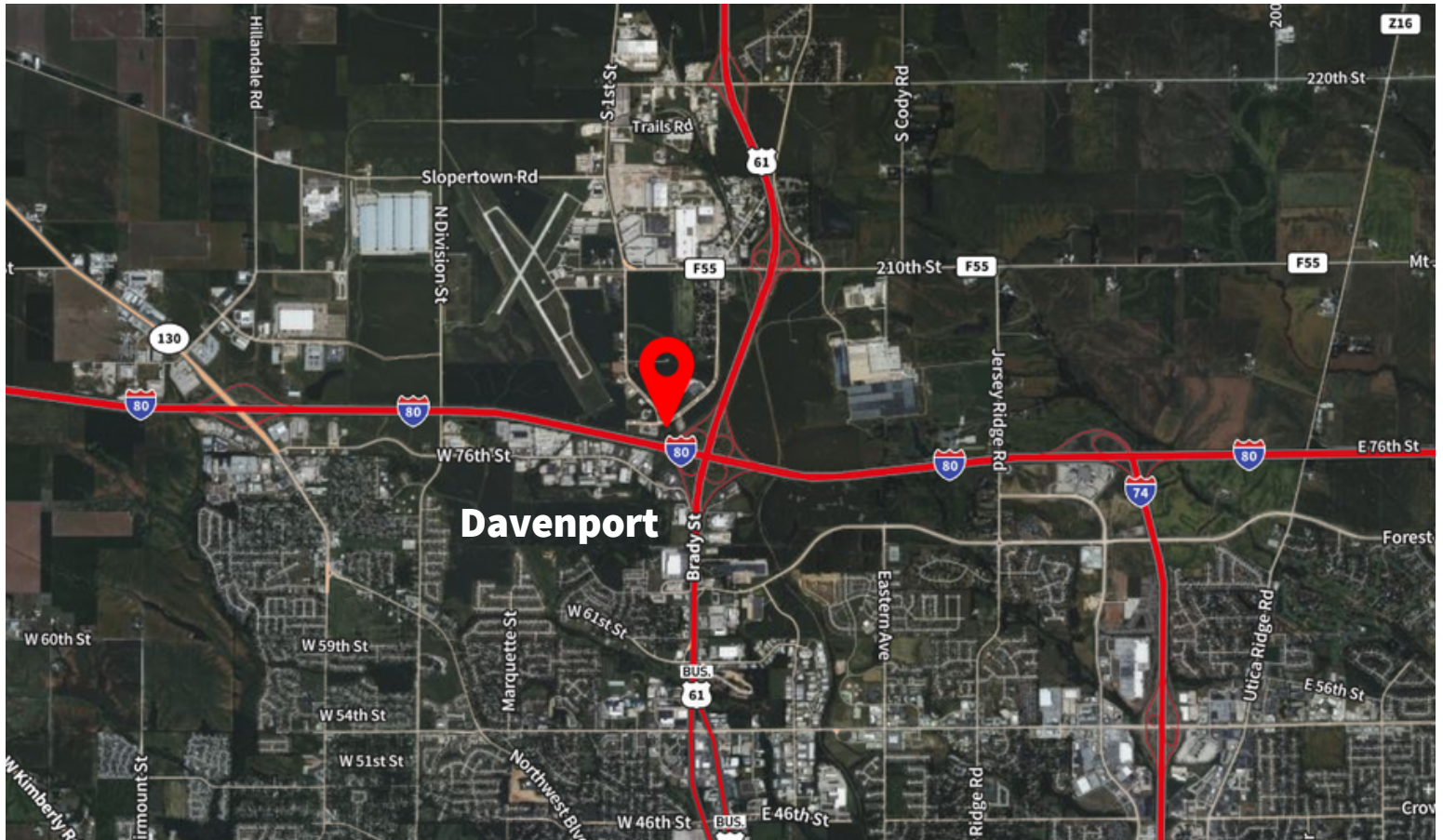


Flex warehouse space - 25,000 RSF
22' - 24' clear height

Industrial Space for Lease



250 Research Parkway | Davenport, IA 52806



Contact

Michael Minard, CCIM

Vice President
+1 563 508 4649
michael.minard@jll.com

Austin Hedstrom

Senior Vice President
+1 515 414 1767
austin.hedstrom@jll.com

Tanner Hedstrom

Senior Associate
+1 515 745 2734
tanner.hedstrom@jll.com

jll.com/des-moines

Jones Lang LaSalle Americas, Inc., a licensed real estate broker in 48 states | DISCLAIMER Although information has been obtained from sources deemed reliable, neither Owner nor JLL makes any guarantees, warranties or representations, express or implied, as to the completeness or accuracy as to the information contained herein. Any projections, opinions, assumptions or estimates used are for example only. There may be differences between projected and actual results, and those differences may be material. The Property may be withdrawn without notice. Neither Owner nor JLL accepts any liability for any loss or damage suffered by any party resulting from reliance on this information. If the recipient of this information has signed a confidentiality agreement regarding this matter, this information is subject to the terms of that agreement. ©2022. Jones Lang LaSalle IP, Inc. All rights reserved.