



712 Ellis Rd

Durham, NC 27703

34,800 SF

Industrial Building For Sale

Single-Tenant Building on 2.92 acres | \$4,200,000



Although information has been obtained from sources deemed reliable, neither Owner nor JLL makes any guarantees, warranties or representations, express or implied, as to the completeness or accuracy as to the information contained herein. Any projections, opinions, assumptions or estimates used are for example only. There may be differences between projected and actual results, and those differences may be material. The Property may be withdrawn without notice. Neither Owner nor JLL accepts any liability for any loss or damage suffered by any party resulting from reliance on this information. If the recipient of this information has signed a confidentiality agreement regarding this matter, this information is subject to the terms of that agreement. © 2023 Jones Lang LaSalle IP, Inc. All rights reserved.

34,800 SF

Industrial Building For Sale

Property Details:

Location

- Just off the intersection of I-885 and NC-147
 - 2.0 miles to RTP
 - 9.0 miles to RDU International Airport
 - 8.6 miles to I-540
 - 6.6 miles to I-40

Pricing

- \$4,200,000

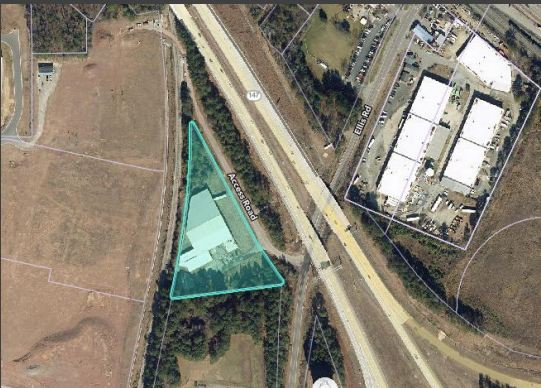
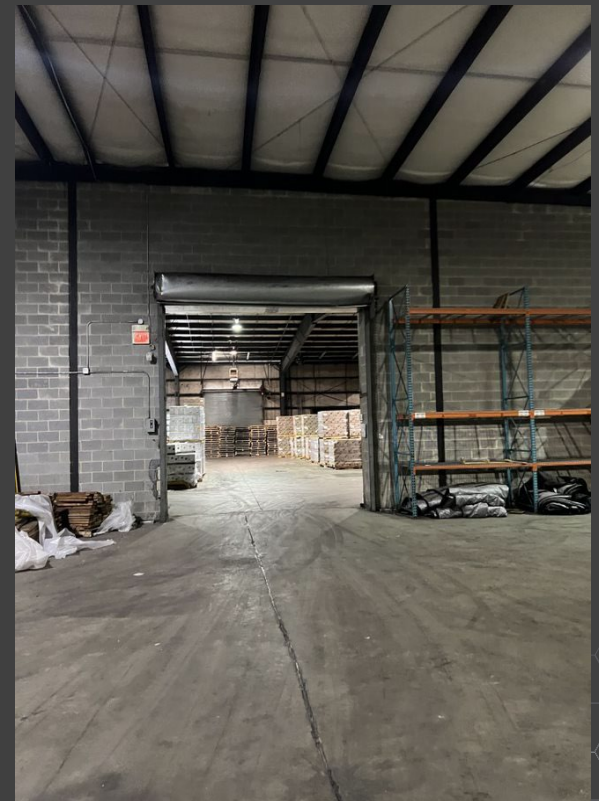
Property specifications

- Single-Tenant Building on 2.92 Acres
- 34,800 SF Total
- Built in 1974
- 18'-22' Clear Height in Main Warehouse
- Clear Span in Main Warehouse
- Three (3) Dock High Doors
- Two (2) Drive-In Doors
- Fenced Truck-Court for parking / exterior storage
- Zoning: I-2

Although information has been obtained from sources deemed reliable, neither Owner nor JLL makes any guarantees, warranties or representations, express or implied, as to the completeness or accuracy as to the information contained herein. Any projections, opinions, assumptions or estimates used are for example only. There may be differences between projected and actual results, and those differences may be material. The Property may be withdrawn without notice. Neither Owner nor JLL accepts any liability for any loss or damage suffered by any party resulting from reliance on this information. If the recipient of this information has signed a confidentiality agreement regarding this matter, this information is subject to the terms of that agreement. © 2023 Jones Lang LaSalle IP, Inc. All rights reserved.

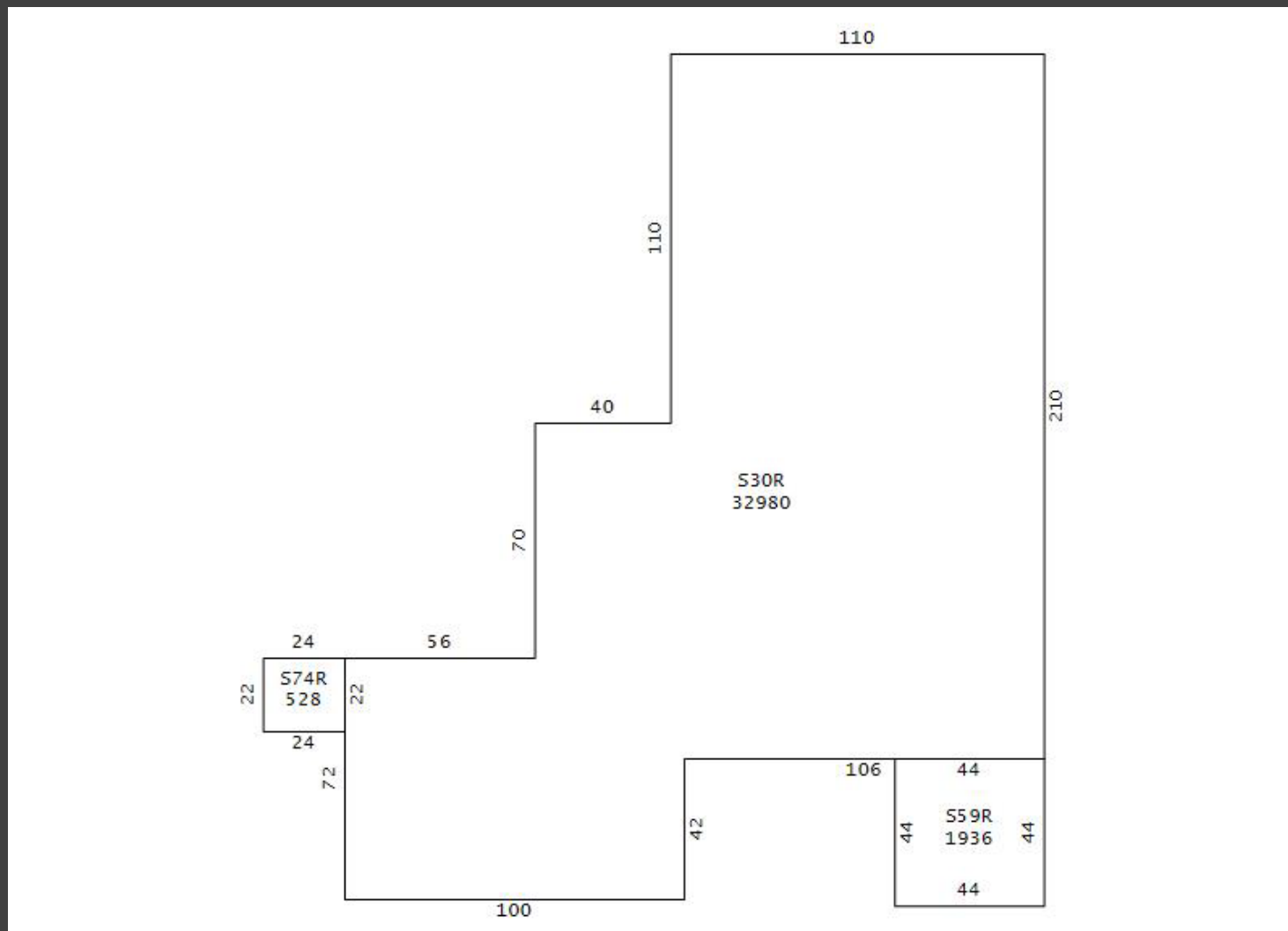
34,800 SF

Industrial Building For Sale



34,800 SF

Industrial Building For Sale



712 Ellis Rd, Durham, NC 27703 – 34,800 SF | 2.92 Acres

Although information has been obtained from sources deemed reliable, neither Owner nor JLL makes any guarantees, warranties or representations, express or implied, as to the completeness or accuracy as to the information contained herein. Any projections, opinions, assumptions or estimates used are for example only. There may be differences between projected and actual results, and those differences may be material. The Property may be withdrawn without notice. Neither Owner nor JLL accepts any liability for any loss or damage suffered by any party resulting from reliance on this information. If the recipient of this information has signed a confidentiality agreement regarding this matter, this information is subject to the terms of that agreement. © 2023 Jones Lang LaSalle IP, Inc. All rights reserved.

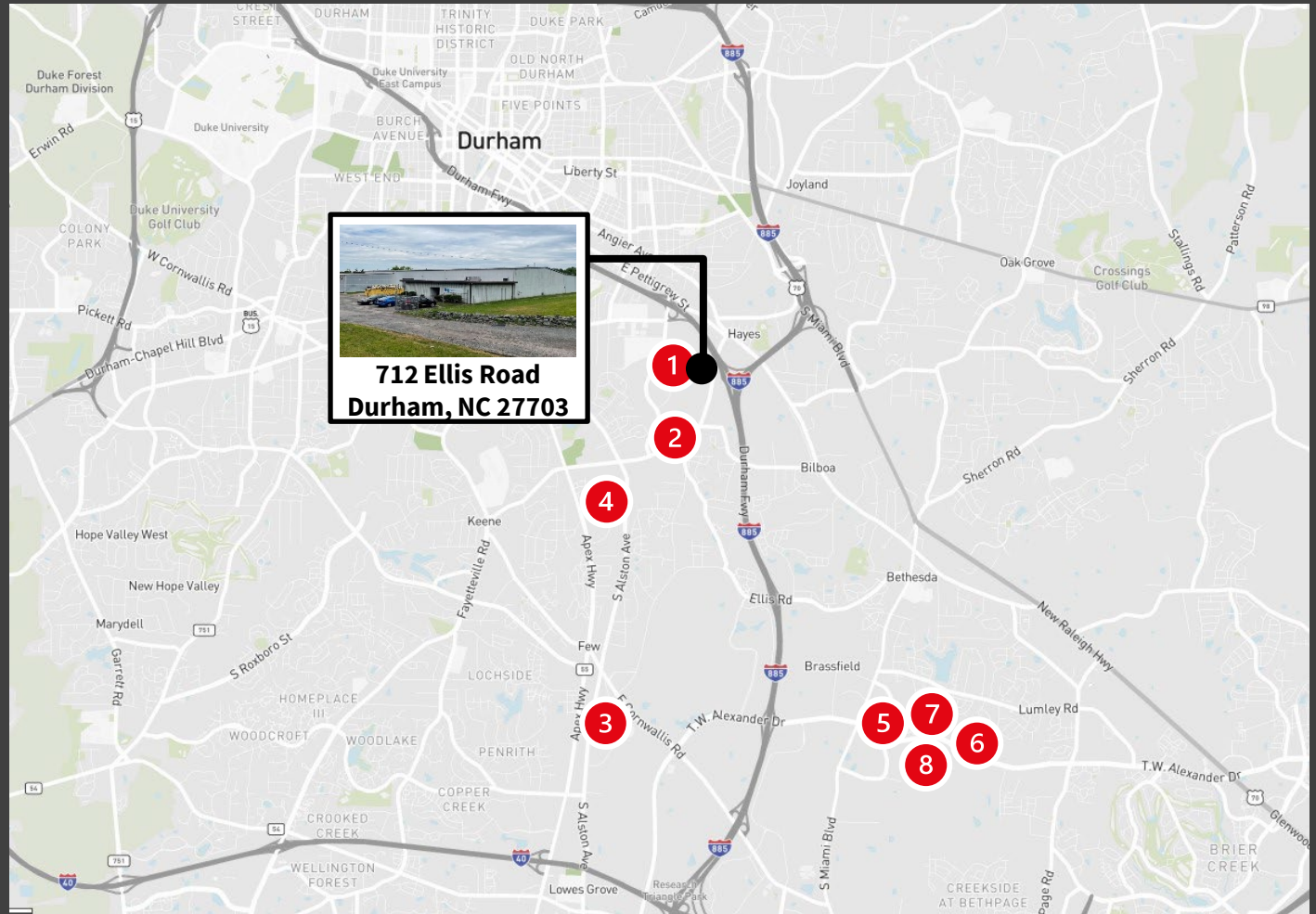
34,800 SF

Industrial Building For Sale



Nearby Industrial Developments

- 1 Regional Commerce Center
- 2 147 Exchange
- 3 Research Tri-Center
- 4 Whilden Industrial Center
- 5 Triangle Business Center
- 6 Liberty Ridge
- 7 Centerpoint
- 8 Alexander Industrial Park



JLL

Al Williams

Executive Vice President

919 424 8154

Al.Williams@jll.com

JLL

Simon Copeland

Associate

919 424 8454

Simon.Copeland@jll.com

712 Ellis Rd, Durham, NC 27703 – 34,800 SF | 2.92 Acres

Although information has been obtained from sources deemed reliable, neither Owner nor JLL makes any guarantees, warranties or representations, express or implied, as to the completeness or accuracy as to the information contained herein. Any projections, opinions, assumptions or estimates used are for example only. There may be differences between projected and actual results, and those differences may be material. The Property may be withdrawn without notice. Neither Owner nor JLL accepts any liability for any loss or damage suffered by any party resulting from reliance on this information. If the recipient of this information has signed a confidentiality agreement regarding this matter, this information is subject to the terms of that agreement. © 2023 Jones Lang LaSalle IP, Inc. All rights reserved.

34,800 SF

Industrial Building For Sale



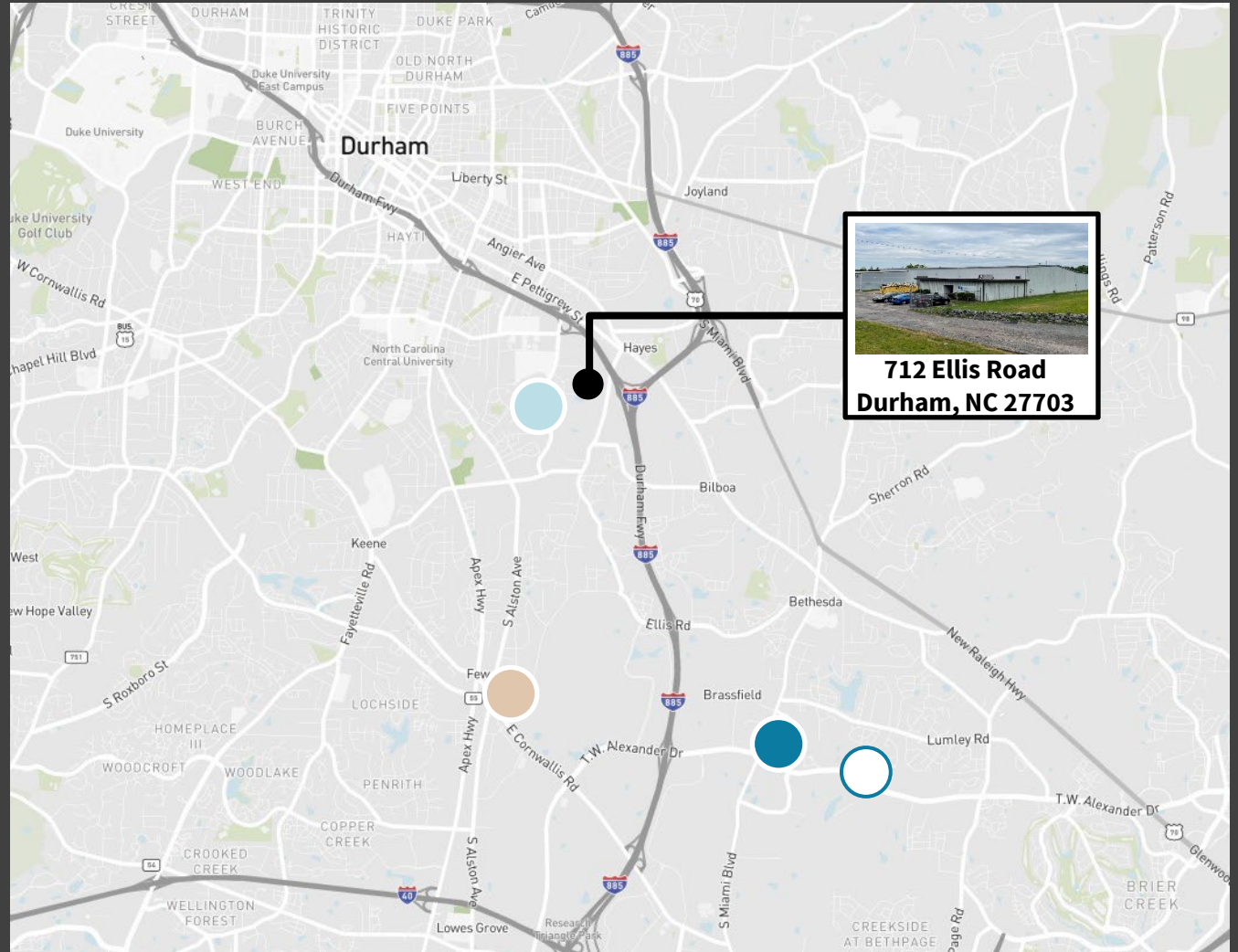
Nearby Occupants

Amazon, Life Science Logistics, North State Express, Lindenmeyr Munroe, East Coast Metal Distributors, Fidelitone, Special Services Freight

Bell and Howell, Toshiba GCS, Amcor, RiteRug Flooring, UPS, Lowe's Pro Supply, XPO Logistics, Shutterfly, Kempower, Hatch Beauty Labs

Millennium Print Group, Peter Millar, Intuitive Surgical, Tergus Pharma, Power Secure, GE Aircraft Engines, Eck Supply, ThermoFisher

Implus, LabCorp, Parata Systems, Loomis Armored, Amazon, Wayfair, DHL, Millennium Print Group, Best Buy



JLL

Al Williams

Executive Vice President

919 424 8154

Al.Williams@jll.com

JLL

Simon Copeland

Associate

919 424 8454

Simon.Copeland@jll.com

712 Ellis Rd, Durham, NC 27703 – 34,800 SF | 2.92 Acres

Although information has been obtained from sources deemed reliable, neither Owner nor JLL makes any guarantees, warranties or representations, express or implied, as to the completeness or accuracy as to the information contained herein. Any projections, opinions, assumptions or estimates used are for example only. There may be differences between projected and actual results, and those differences may be material. The Property may be withdrawn without notice. Neither Owner nor JLL accepts any liability for any loss or damage suffered by any party resulting from reliance on this information. If the recipient of this information has signed a confidentiality agreement regarding this matter, this information is subject to the terms of that agreement. © 2023 Jones Lang LaSalle IP, Inc. All rights reserved.