

welltower



FOR LEASE

PRAIRIE STAR MEDICAL
OFFICE BUILDING A

23351 PRAIRIE STAR PKWY
LENEXA, KS 66227

PROPERTY HIGHLIGHTS

75,146 SF Class A medical office building located in Lenexa, KS.

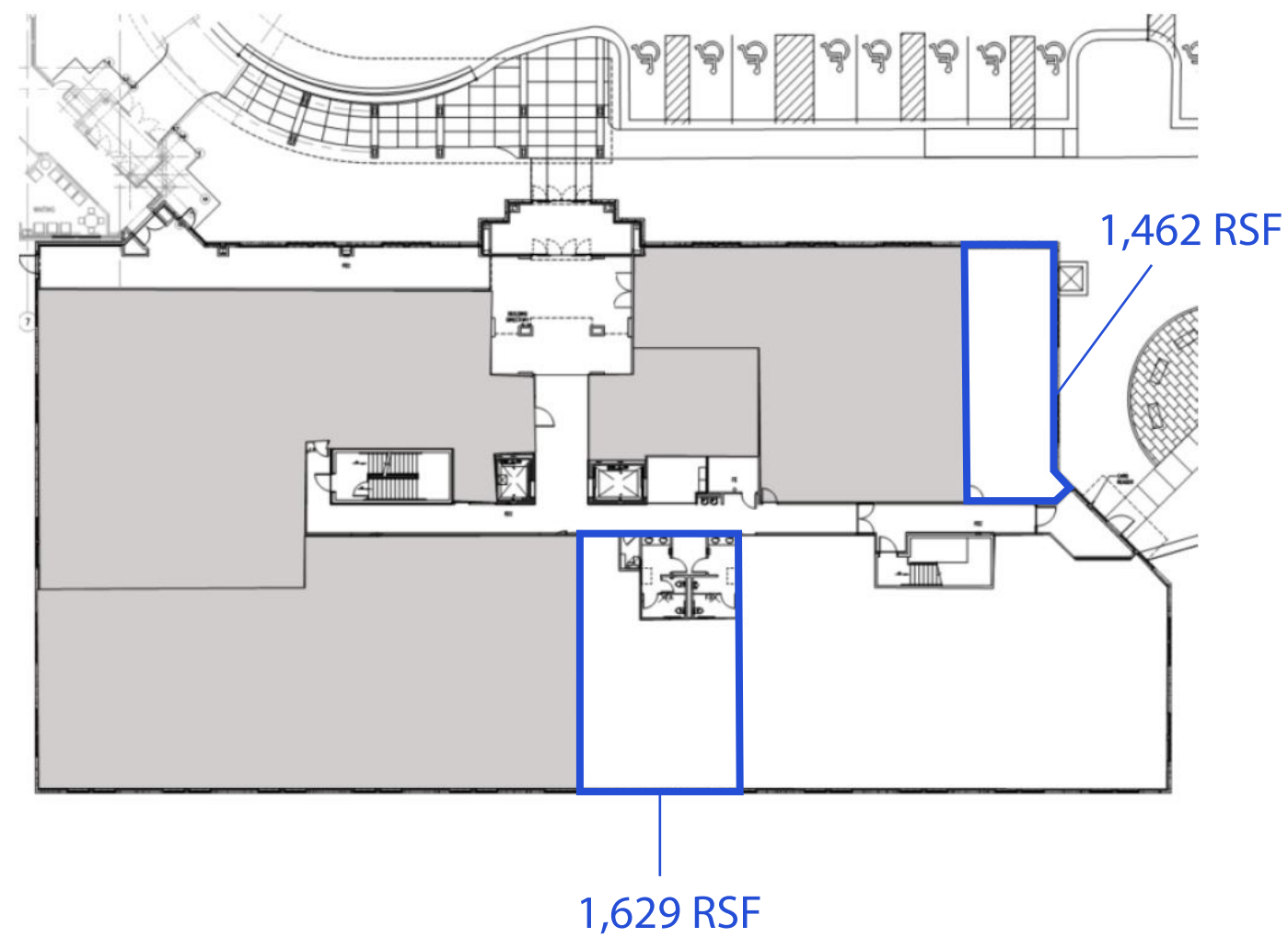
- Located on the AdventHealth Lenexa Campus
- Excellent access to K-7 and K-10 highways
- Located in the high-growth west Johnson County suburbs
- Pharmac on the first floor
- Coffee shop in adjacent building next to ER
- Underground parking garage
- Hospital security services located on site
- Lease Rate: \$20.00 PSF NNN

welltower



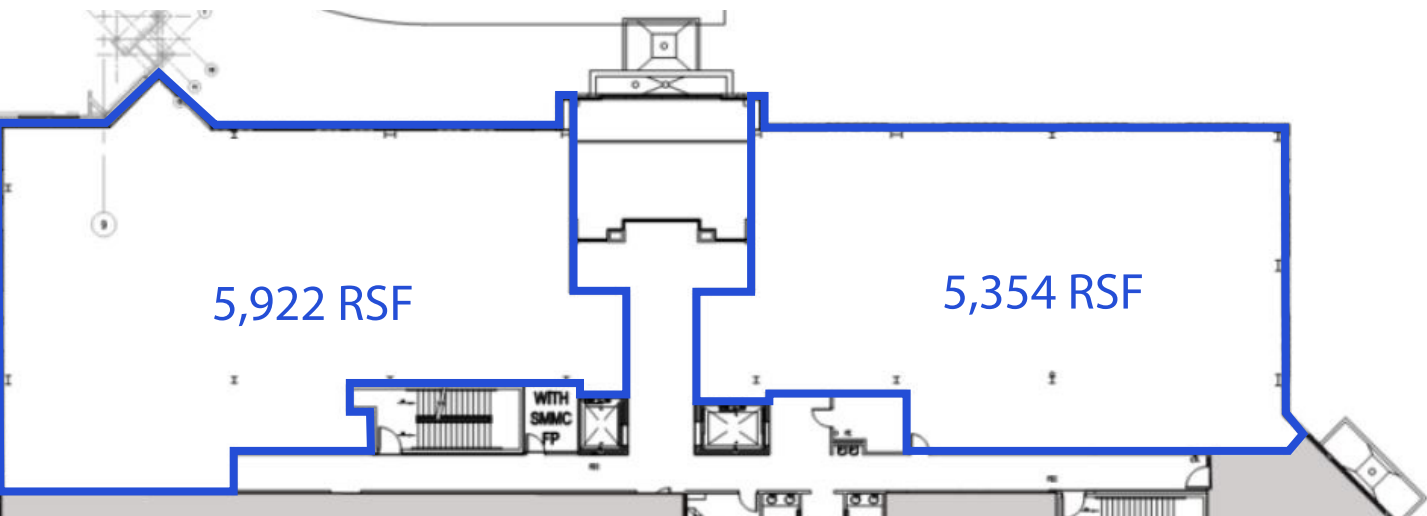
FLOOR I

AVAILABLE SPACE

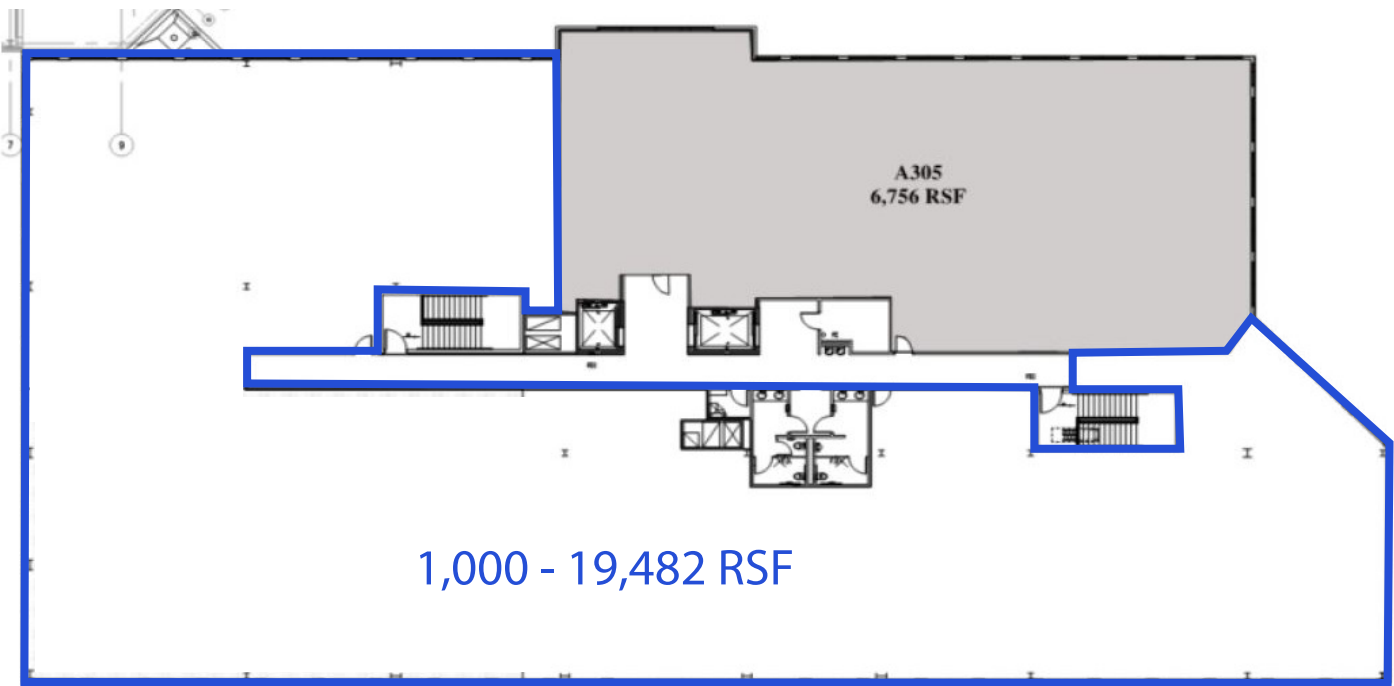


FLOOR II

AVAILABLE SPACE



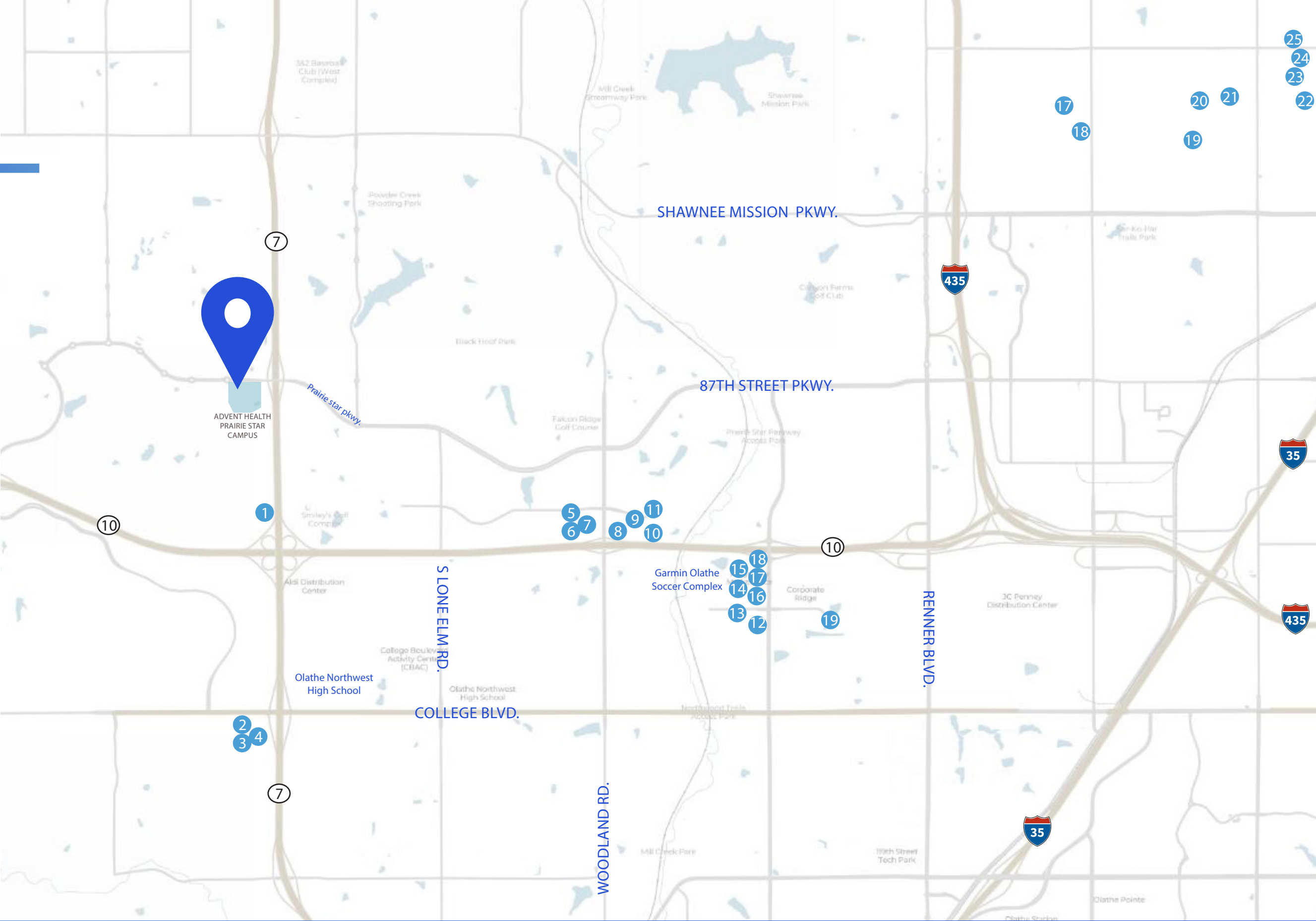
FLOOR III



PROPERTY LOCATION

NEARBY AMENITIES

- 1. Casey's General Store
- 2. POUR Coffee House
- 3. Austin's Bar & Grill
- 4. Shell
- 5. Blue Moose
- 6. El Toro Loco
- 7. CVS
- 8. Wendy's
- 9. Old Shawnee Pizza
- 10. Price Chopper
- 11. Scooter's Coffee
- 12. Burger King
- 13. Phillips 66
- 14. Taco Bell
- 15. Minsky's Pizza
- 16. Salty Iguana
- 17. Mr. Goodcents
- 18. Johnny's Tavern
- 19. Genesis Health Club



LEASING TEAM

ADDRESS: 23351 PRAIRIE STAR PKWY | LENEXA, KS 66227

RJ TROWBRIDGE
913.469.4637
rj.trowbridge@jll.com

AVERY COMEAU
913.927.9252
avery.comeau@jll.com



Although information has been obtained from sources deemed reliable, neither Owner nor JLL makes any guarantees, warranties or representations, express or implied, as to the completeness or accuracy as to the information contained herein. Any projections, opinions, assumptions or estimates used are for example only. There may be differences between projected and actual results, and those differences may be material. The Property may be withdrawn without notice. Neither Owner nor JLL accepts any liability for any loss or damage suffered by any party resulting from reliance on this information. If the recipient of this information has signed a confidentiality agreement regarding this matter, this information is subject to the terms of that agreement.

©2022 Jones Lang LaSalle IP, Inc. All rights reserved.