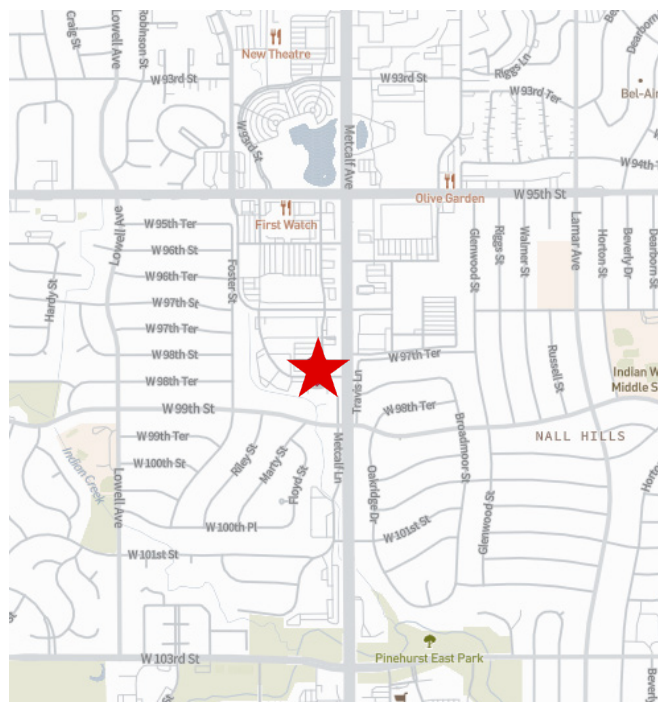




Property Overview

- Building 2, Suite 110- 2,030 Square feet
- Sale price- \$385,700.00
- Located in the Windmill Square Office Park in Overland Park, KS
- Furniture included and configured for immediate occupancy
- Glass exterior façade and monument signage available
- Convenient Location to I-435 & I-35 with numerous amenities nearby
- Responsive local ownership



For more information, contact:

Ryan Schneider

+1 913 484 0747

ryan.schneider@jll.com

Jim Gates

+1 913 469 4638

jim.gates@jll.com



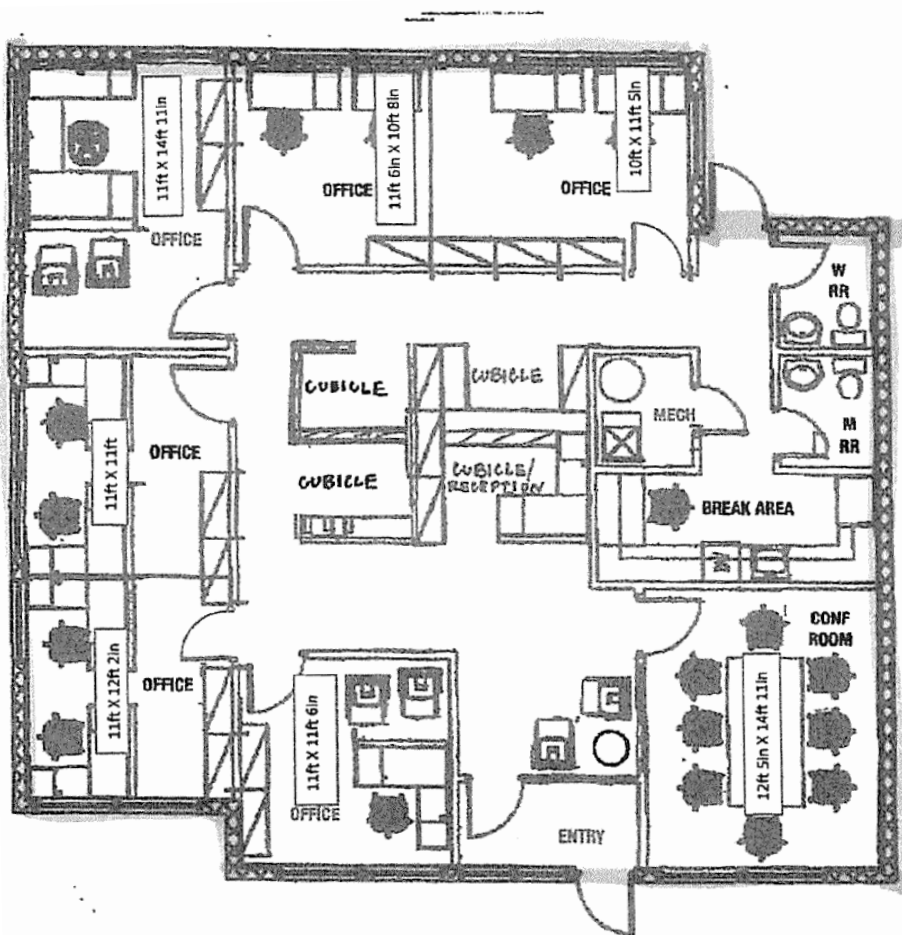
Jones Lang LaSalle Brokerage, Inc.

7111 W 98th Terrace Overland Park, KS

FOR SALE



Floor Plan - 2,030 RSF



- 2,030 SF
- 1 conference room
- Open workspace with 4 desks
- 6 private offices
- 2 restrooms
- Small kitchen

Ryan Schneider
+1 913 484 0747
ryan.schneider@jll.com

Jim Gates
+1 913 469 4638
jim.gates@jll.com



For more information, contact:

Ryan Schneider

+1 913 484 0747

ryan.schneider@jll.com

Jim Gates

+1 913 469 4638

jim.gates@jll.com

Although information has been obtained from sources deemed reliable, JLL does not make any guarantees, warranties or representations, express or implied, as to the completeness or accuracy as to the information contained herein. Any projections, opinions, assumptions or estimates used are for example only. There may be differences between projected and actual results, and those differences may be material. JLL does not accept any liability for any loss or damage suffered by any party resulting from reliance on this information. If the recipient of this information has signed a confidentiality agreement with JLL regarding this matter, this information is subject to the terms of that agreement. ©2021 Jones Lang LaSalle IP, Inc. All rights reserved.

