

**7255 W 98th Terrace  
Overland Park, KS**

**Building 5**  
Suite 216 East Wing

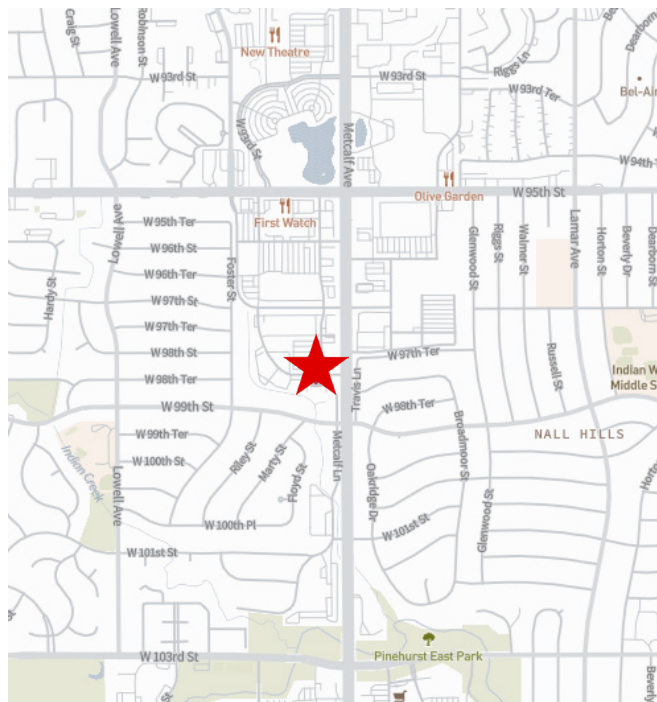


## Suite 216 East Wing

### Property Overview

**3,452 RSF**

- Phase 2 - 2nd Floor East Wing
- 2 offices
- 33 workstations
- 2 restrooms



For more information, contact:

**Ryan Schneider**  
+1 913 484 0747  
ryan.schneider@jll.com

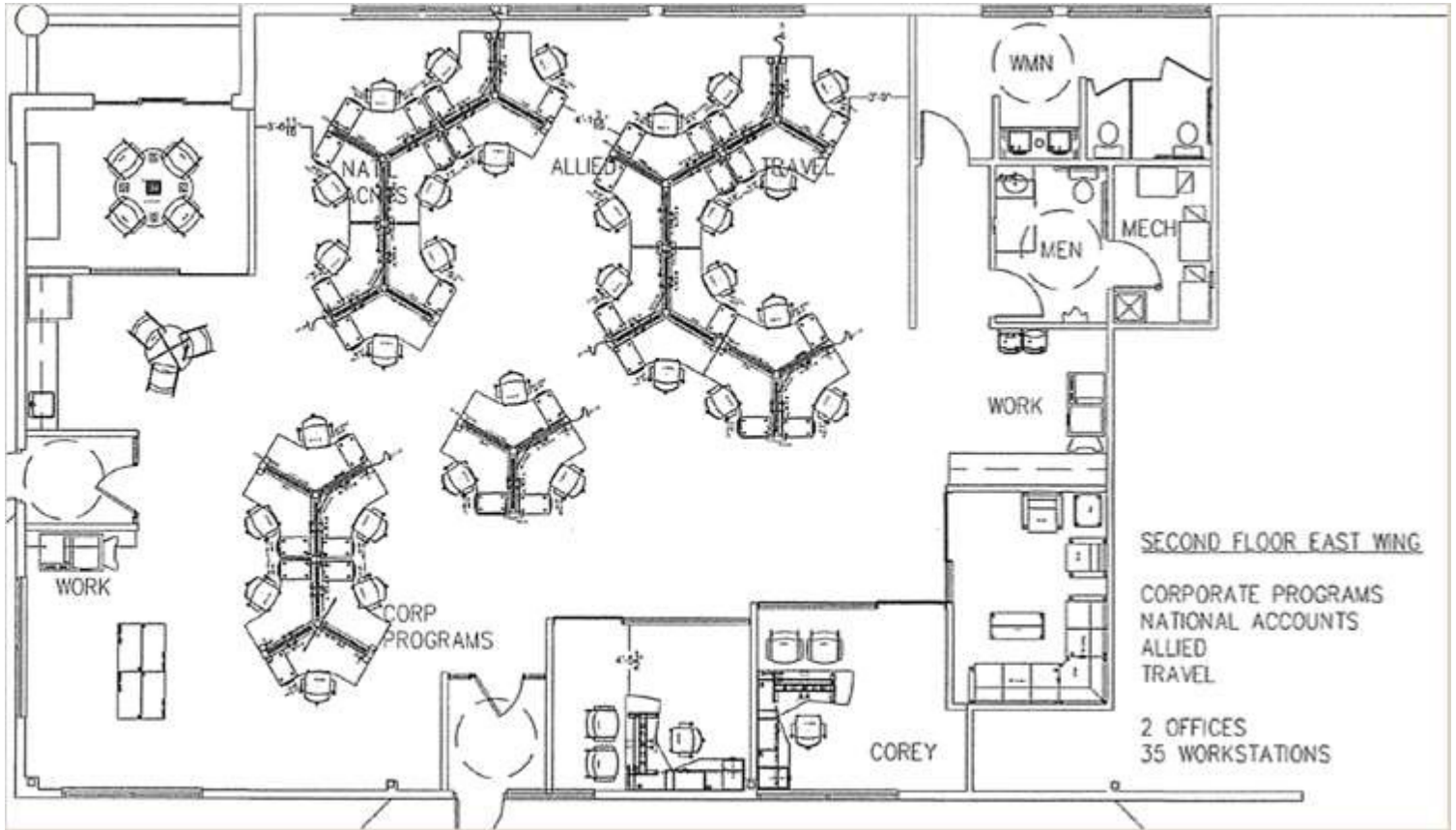
**Jim Gates**  
+1 913 469 4638  
jim.gates@jll.com



Jones Lang LaSalle Brokerage, Inc.



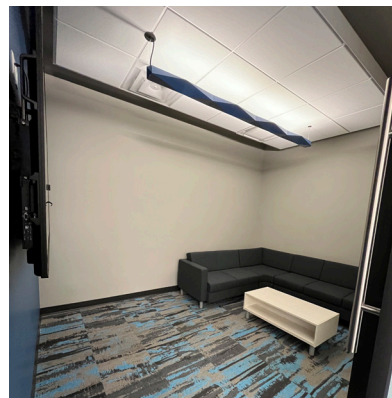
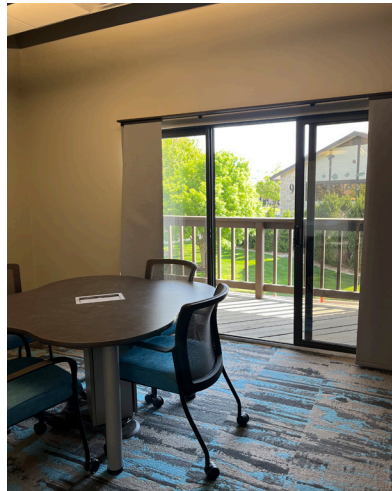
## Floor Plan - 3,452 RSF





**7255 W 98th Terrace**  
**Overland Park, KS**

**Building 5**  
**Suite 216 East Wing**



**Ryan Schneider**  
+1 913 484 0747  
ryan.schneider@jll.com

**Jim Gates**  
+1 913 469 4638  
jim.gates@jll.com





**For more information, contact:**

**Ryan Schneider**

+1 913 484 0747

[ryan.schneider@jll.com](mailto:ryan.schneider@jll.com)

**Jim Gates**

+1 913 469 4638

[jim.gates@jll.com](mailto:jim.gates@jll.com)

---

Although information has been obtained from sources deemed reliable, JLL does not make any guarantees, warranties or representations, express or implied, as to the completeness or accuracy as to the information contained herein. Any projections, opinions, assumptions or estimates used are for example only. There may be differences between projected and actual results, and those differences may be material. JLL does not accept any liability for any loss or damage suffered by any party resulting from reliance on this information. If the recipient of this information has signed a confidentiality agreement with JLL regarding this matter, this information is subject to the terms of that agreement. ©2021 Jones Lang LaSalle IP, Inc. All rights reserved.

