



For Lease

Two Industrial Properties for Lease

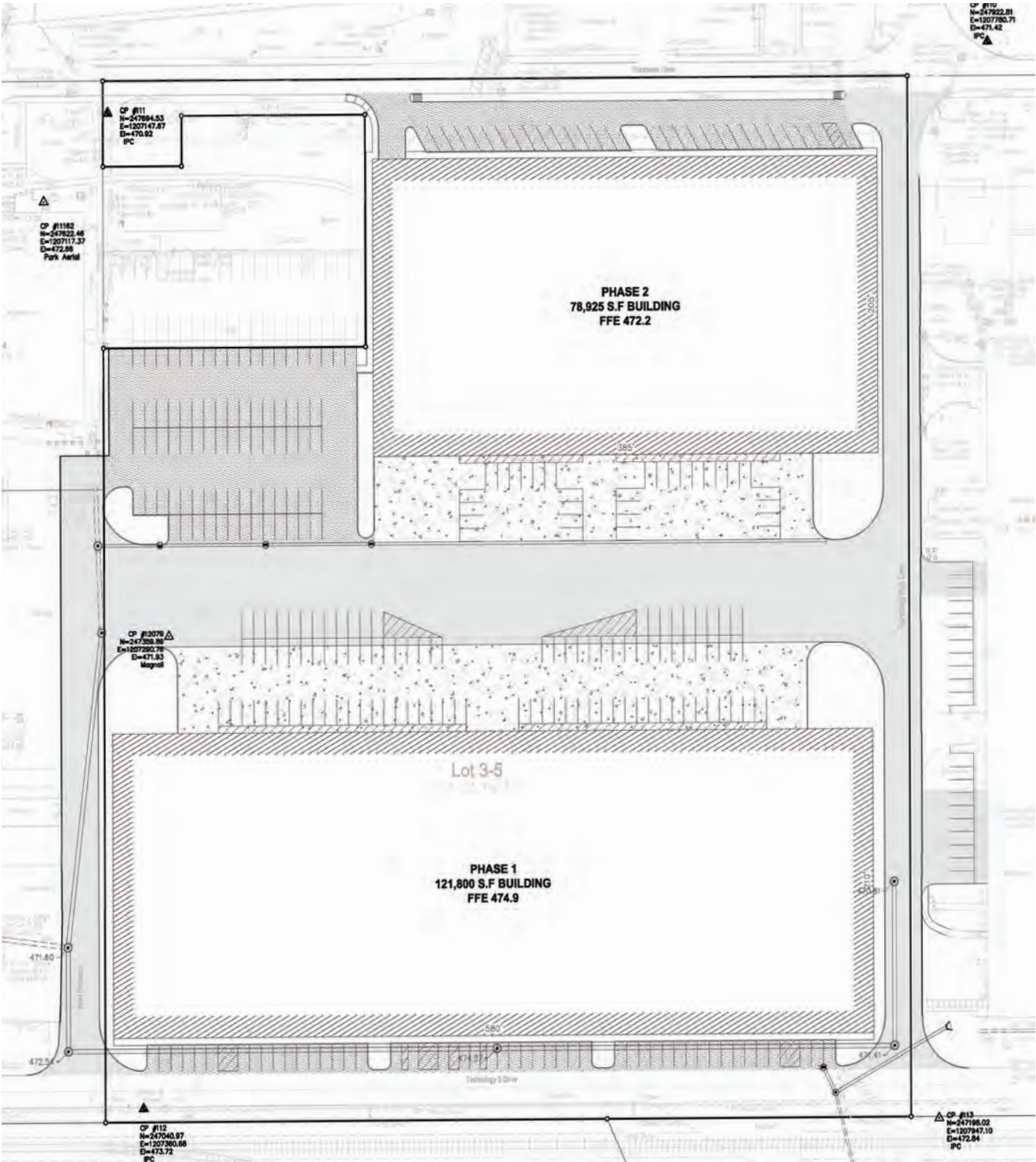
- 200,725 total s.f.
 - 121,800 s.f. in a Class A Industrial Facility
 - 78,925 s.f. in a Class A Industrial Facility
- 30' clear height
- Divisible
- BTS office
- Zoned EZ-1
- Quick access to Interstate-64, Interstate-65 and Interstate-265

Airport Industrial Center
114 Rochester Drive
Louisville, Kentucky 40214

Christopher H. Beard, CCIM
+1 502 394 2513
chris.beard@jll.com

jll.com/louisville



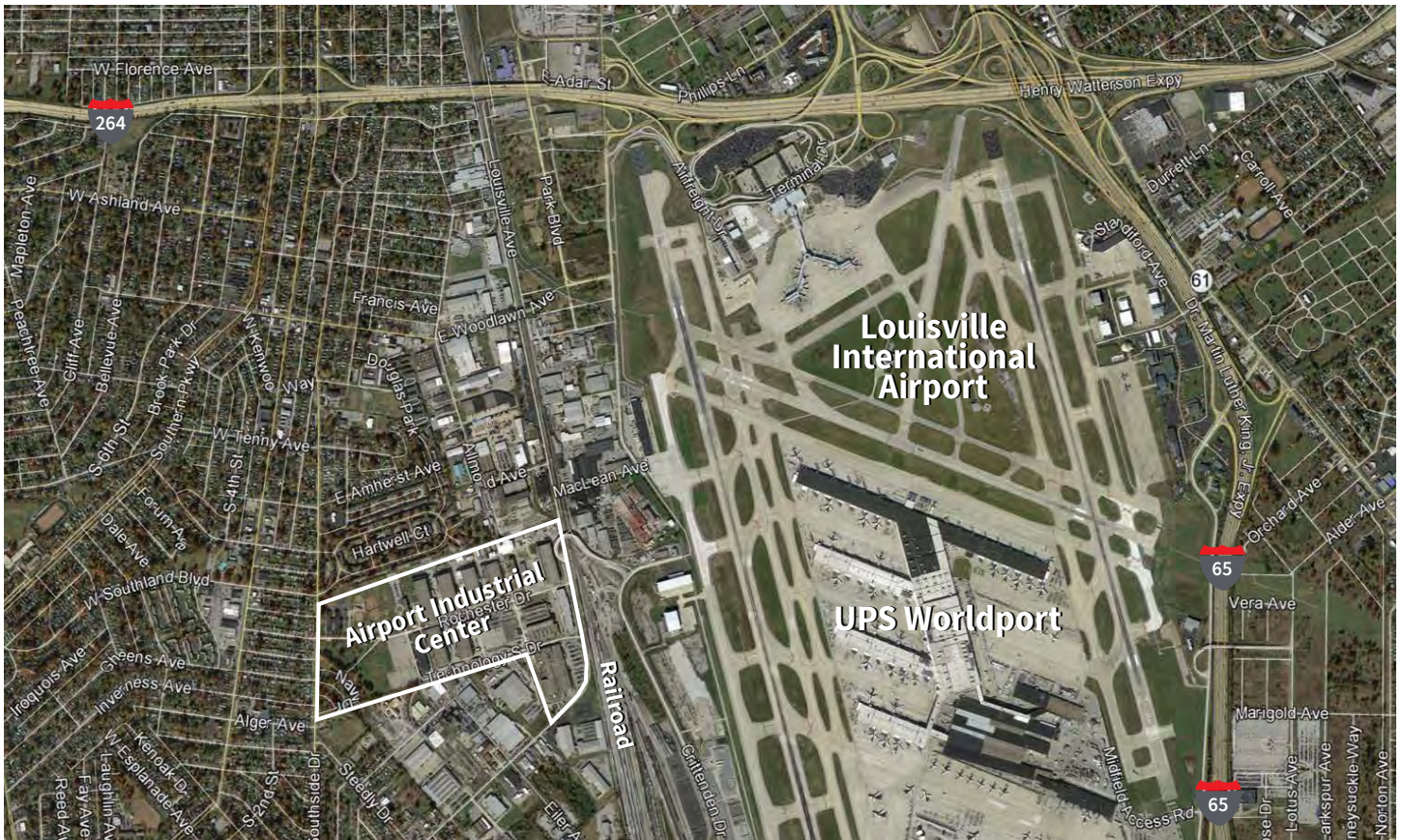
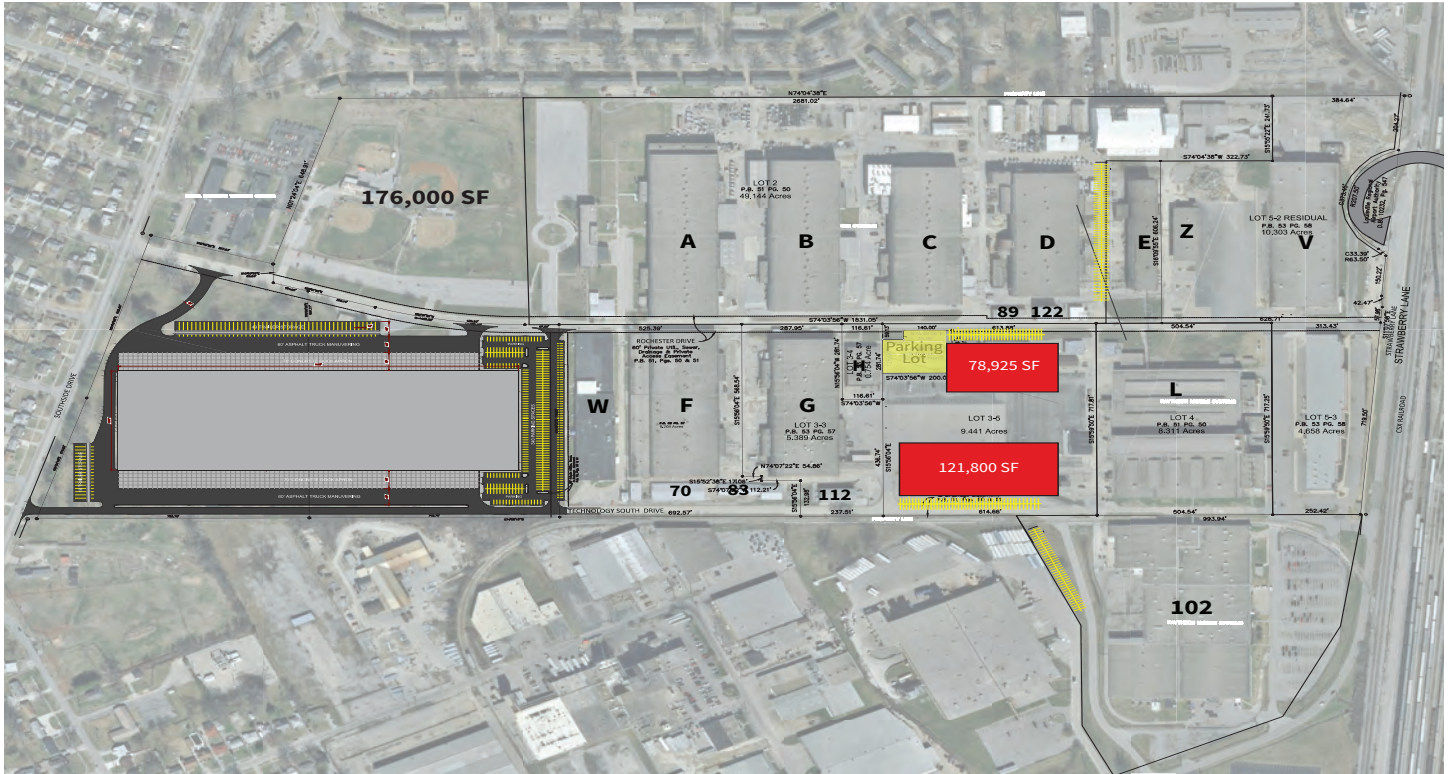




Property overview

	BUILDING 1	BUILDING 2
Total Building SF	121,800 SF	78,925 SF
Building Dimensions	210' x 580'	205' x 385'
Shared Truck Court	190'	190'
Dock Doors (expandable)	3 / 10	3 / 15
Drive-In Doors	2 - 14' x 16'	2 - 14' x 16'
Clear Height	30'	30'
Office Area	Build-to-Suit	Build-to-Suit
Column Spacing	50' x 50'	50' x 50'
Fire Protection System	ESFR	ESFR
Truck Court	55' Concrete Apron	55' Concrete Apron
Parking (car / trailer)	42 (plus common area) / TBD	36 (plus common area) / TBD
Warehouse Lighting	T-5 to Suit	T-5 to Suit
Year Built	2020	2020
Structure Exterior	Tilt Wall Concrete	Tilt Wall Concrete
Zoning	EZ-1	EZ-1
Electric	800 Amp, 480 Volt	800 Amp, 480 Volt
Floors	7" Conventional Slab	7" Conventional Slab
Roof	TPO Membrane Roof System	TPO Membrane Roof System

Location overview



Although information has been obtained from sources deemed reliable, neither Owner nor JLL makes any guarantees, warranties or representations, express or implied, as to the completeness or accuracy as to the information contained herein. Any projections, opinions, assumptions or estimates used are for example only. There may be differences between projected and actual results, and those differences may be material. The Property may be withdrawn without notice. Neither Owner nor JLL accepts any liability for any loss or damage suffered by any party resulting from reliance on this information. If the recipient of this information has signed a confidentiality agreement regarding this matter, this information is subject to the terms of that agreement. ©2022 Jones Lang LaSalle IP, Inc. All rights reserved.

**The outbreak of the COVID-19 virus (novel coronavirus) since the end of January 2020 has resulted in market uncertainty and volatility. While the economic impact of a contagion disease generally arises from the uncertainty and loss of consumer confidence, its impact on real estate values is unknown at this stage.

