

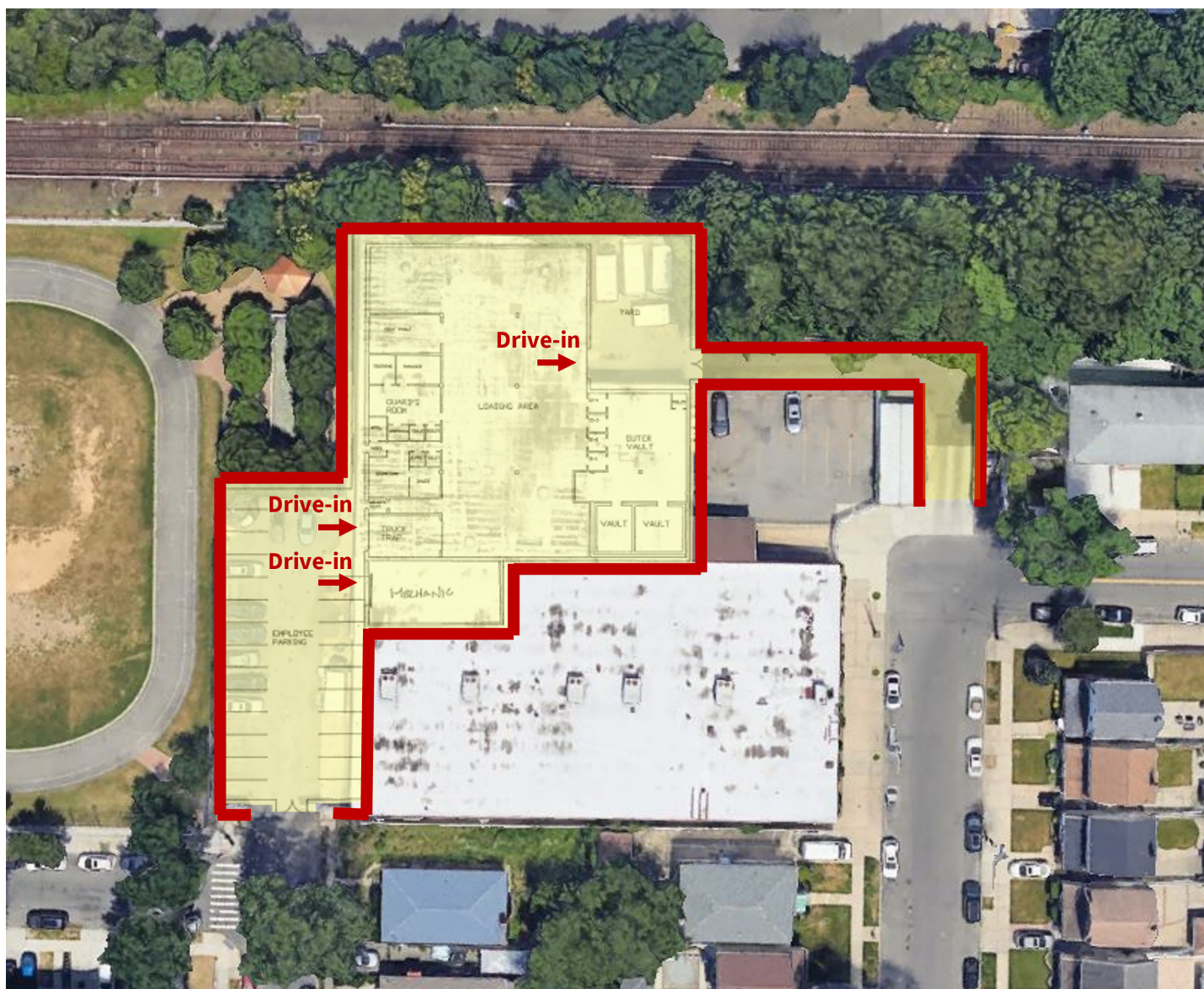


16,200 SF Warehouse
10,000 SF Parking

SUBLEASE
THROUGH
8/31/26

97-35 133rd Ave

Ozone Park, NY 11417



Potential 5 year extension option available through 2031



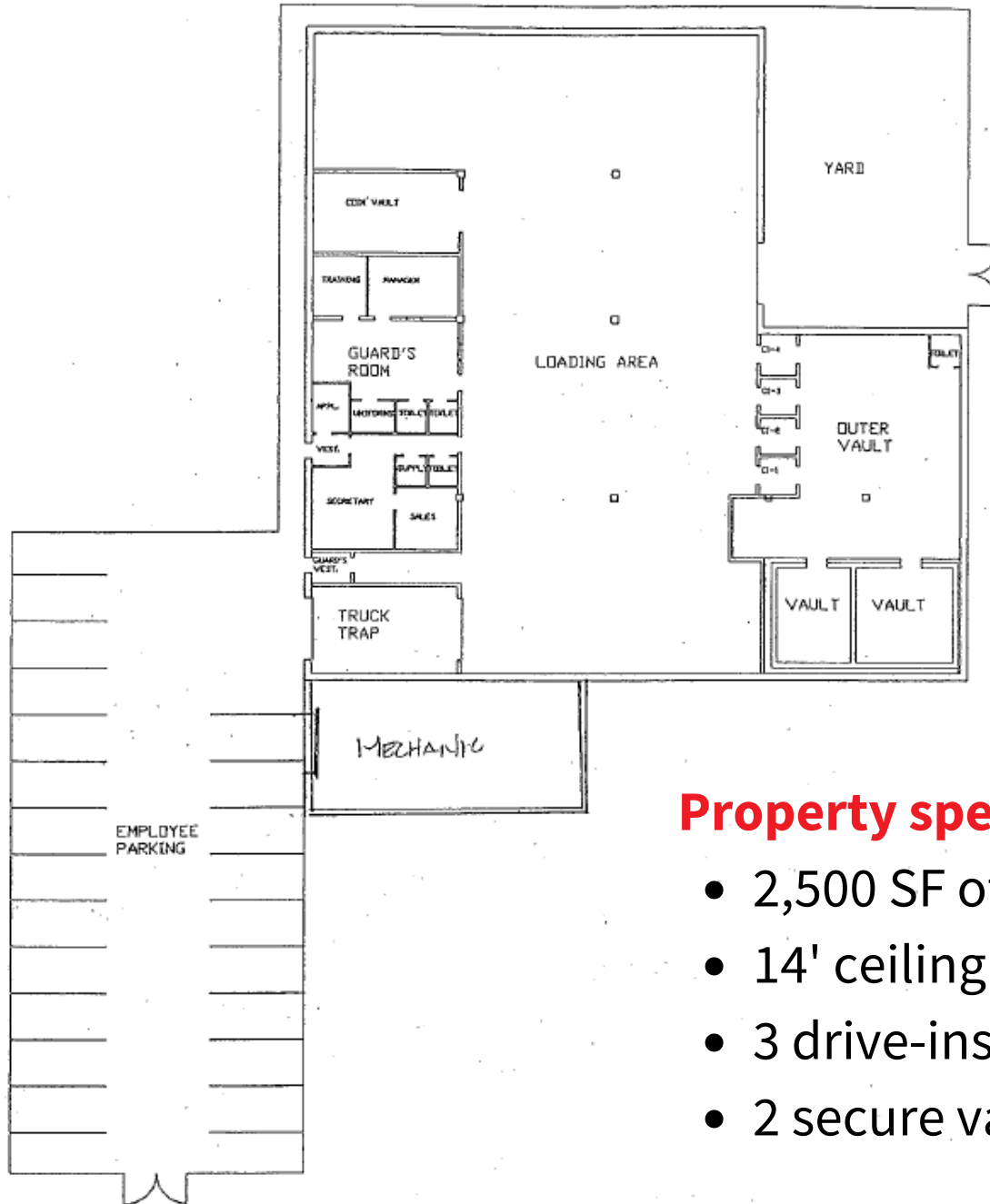
16,200 SF Warehouse
10,000 SF Parking

SUBLEASE
THROUGH 8/31/26

97-35 133rd Ave, Ozone Park, NY

Site Plan

Exhibit C



Property specifications

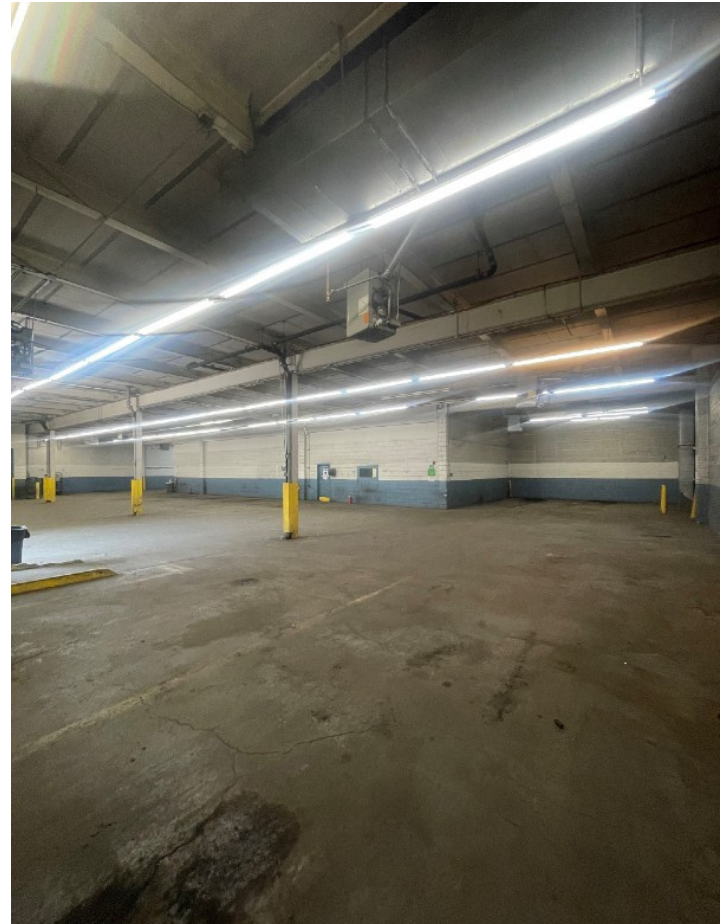
- 2,500 SF office
- 14' ceiling height
- 3 drive-ins
- 2 secure vaults



16,200 SF Warehouse
10,000 SF Parking

SUBLEASE
THROUGH 8/31/26

97-35 133rd Ave, Ozone Park, NY



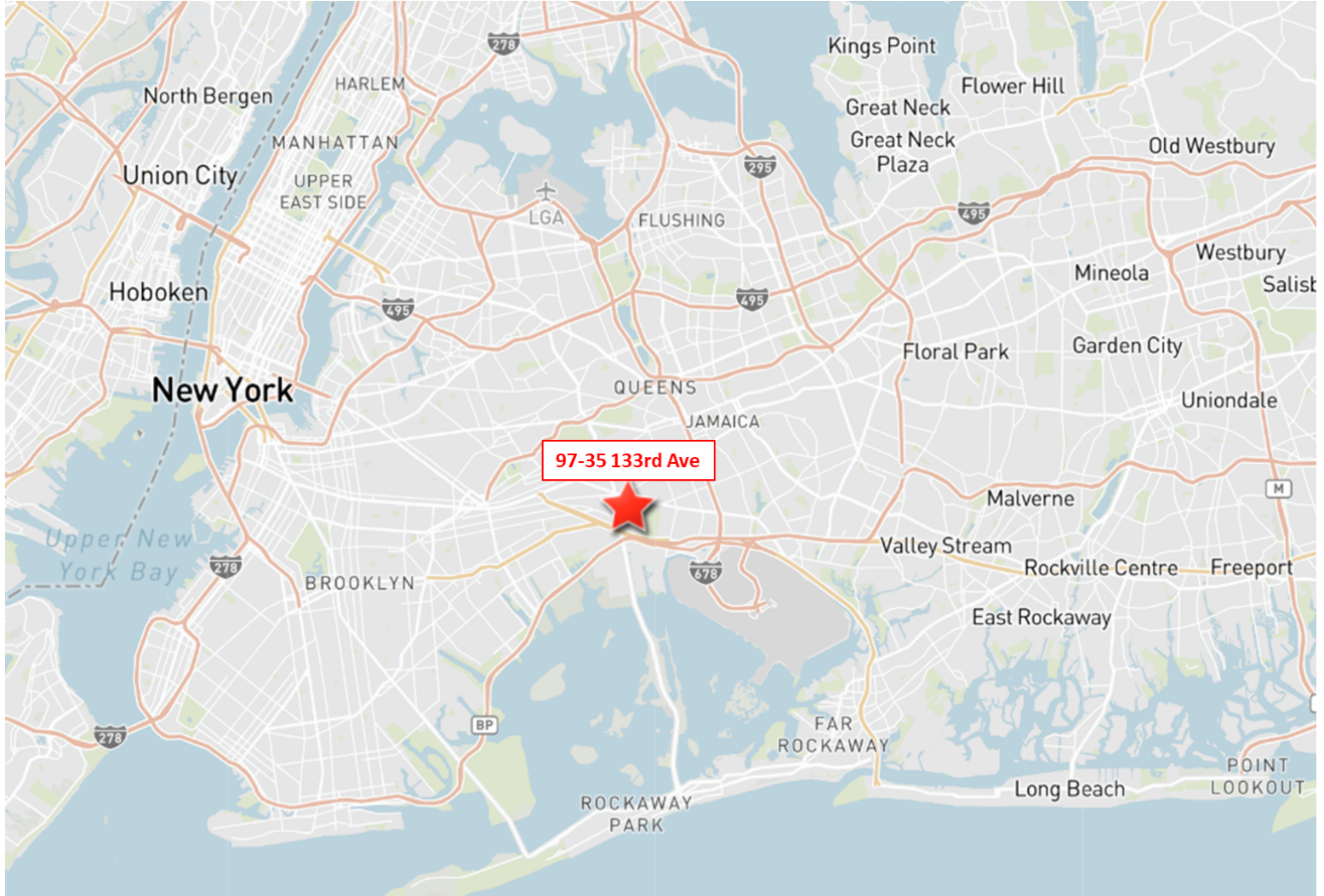
Although information has been obtained from sources deemed reliable, neither Owner nor JLL make any guarantees, warranties or representations, express or implied, as to the completeness or accuracy as to the information contained herein. Any projections, opinions, assumptions or estimates used are for examples only. There may be differences between projected and actual results, and those differences may be material. The Property may be withdrawn without notice. Neither Owner nor JLL accepts any liability for any loss or damage suffered by any party resulting from reliance on this information. If the recipient of this information has signed a confidentiality agreement regarding this matter, this information is subject to the terms of that agreement. 2023 Jones Lang LaSalle IP, Inc. All rights reserved.



16,200 SF Warehouse
10,000 SF Parking

SUBLEASE
THROUGH 8/31/26

97-35 133rd Ave, Ozone Park, NY



JLL

Jeremy Liebler

908.337.7963
jeremy.liebler@jll.com

Adam Citron

212.376.1887
adam.citron@jll.com