

For Sublease



216 LINDBERGH AVENUE LIVERMORE, CA

Property highlights:

- 8,360 RSF available immediately
- Available through May 31, 2028
- 4 private offices
- 1 large open kitchen
- Reception area
- New carpet & paint
- Brand new restrooms
- 5 reserved parking stalls
- Recessed dock level door & 1 grade level door
- Drop ceiling in a portion warehouse area

For More Information:

Robert Vance

+1 925 944 2152

robert.vance@jll.com

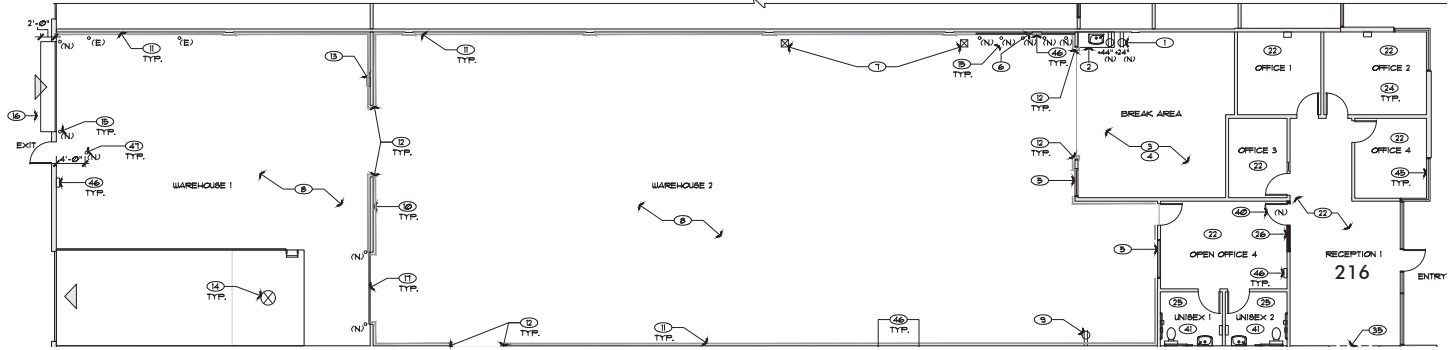
License #: 00971934

Jones Lang LaSalle Brokerage, Inc.

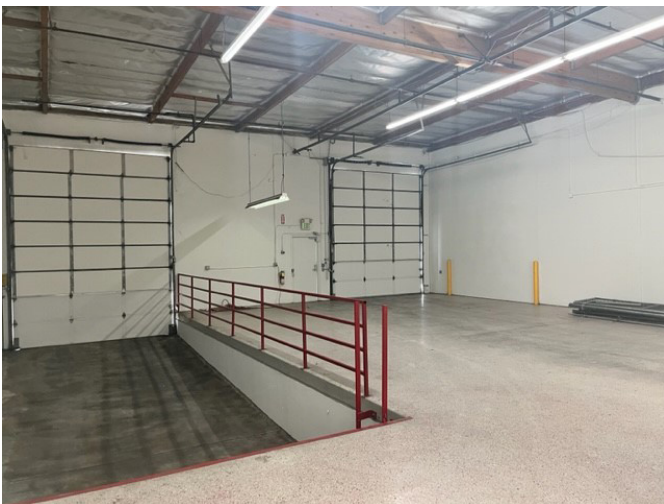
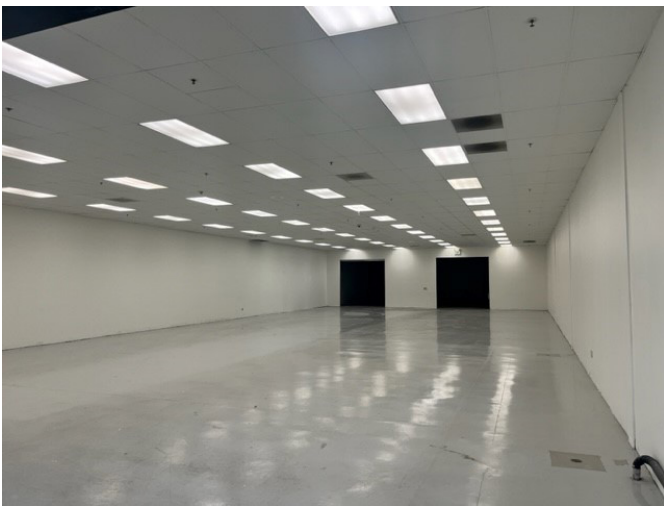
License #: 01856260

Although information has been obtained from sources deemed reliable, JLL does not make any guarantees, warranties or representations, express or implied, as to the completeness or accuracy as to the information contained herein. Any projections, opinions, assumptions or estimates used are for example only. There may be differences between projected and actual results, and those differences may be material. JLL does not accept any liability for any loss or damage suffered by any party resulting from reliance on this information. If the recipient of this information has signed a confidentiality agreement with JLL regarding this matter, this information is subject to the terms of that agreement. ©2023. Jones Lang LaSalle Brokerage, Inc. All rights reserved.

RSF	Availability	Lease Expiration Date	Rate
8,360 RSF	Immediately	May 31, 2028	Inquire with broker



Floor plan not to scale



For More Information:

Robert Vance
+1 925 944 2152
robert.vance@jll.com
License #: 00971934


Jones Lang LaSalle Brokerage, Inc.
License #: 01856260