



For Sale

4,062 s.f. building

- 2,624 SF house
- 1,438 SF cottage
- 20 amps, 110 volts, 1 phase electric service
- 1/2" water line, 12" main
- 5/8" gas line, 2" medium pressure main
- 4" sewer line, 8" main
- C-1 zoning on the front section of the property
- EZ-1 zoning on the rear section of the property
- 50 parking spaces
- 1.2746 acres
- Between Ralph Avenue and Gillette Avenue
- 3 miles from I-264

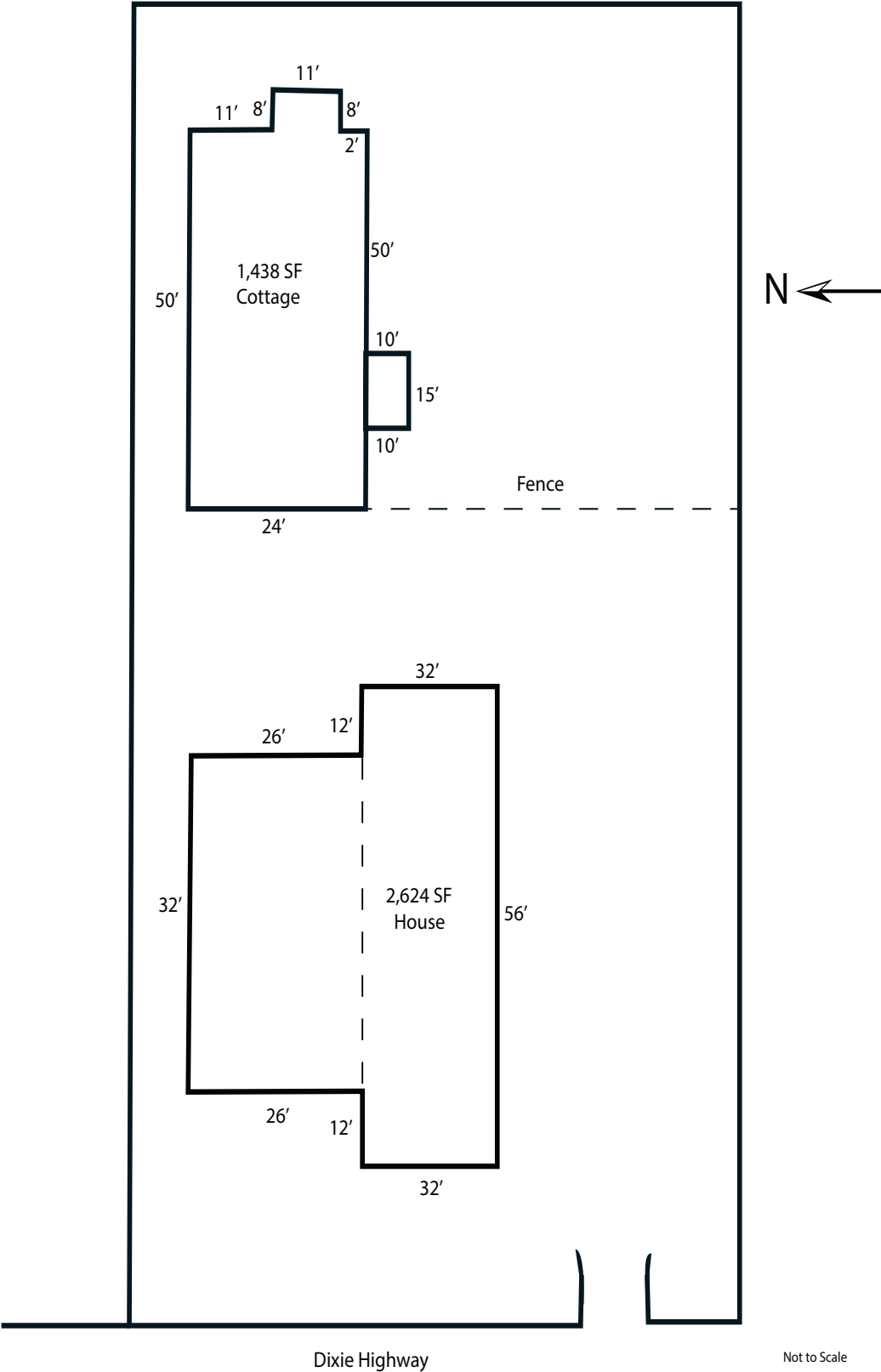
3123 Dixie Highway
Louisville, Kentucky 40216

Stephen C. Lannert, SIOR, CCIM, GRI
+1 502 394 2508
steve.lannert@am.jll.com

jll.com/louisville



Site plan



DISCLAIMER

©2021 Jones Lang LaSalle IP, Inc. All rights reserved. All information contained herein is from sources deemed reliable; however, no representation or warranty is made to the accuracy thereof.

