



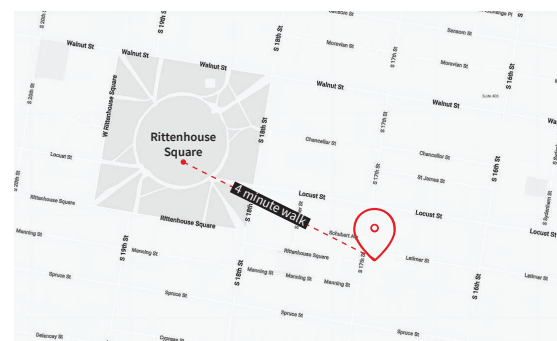
For sublease







Medical Tower Building
255 South 17th Street
Philadelphia, PA 19103



3,510 RSF available on the 3rd floor

Newly constructed office/medical office space -- move in ready and available immediately.



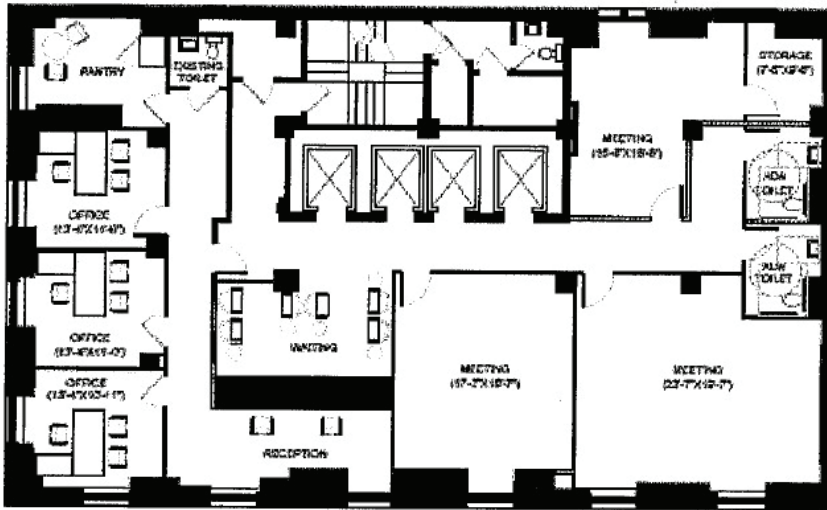
-  Prominent location steps from Rittenhouse Square
-  Single tenant floor
-  2 large exam/training rooms
-  Multiple private offices
-  Kitchenette
-  Building is ADA compliant -- suite features 3 ADA restrooms



Medical Tower Building

255 South 17th Street
Philadelphia, PA 19103

- 3,510 RSF available for sublease
- Asking rate: \$15.00/SF + Electric



Contact

Regan Rich
Associate
+1 484 790 1909
regan.rich@jll.com

Katherine Hollingsworth
Associate
+1 215 282 4628
kat.hollingsworth@jll.com

Jones Lang LaSalle Brokerage, Inc.
1650 Arch Street, Suite 2500
Philadelphia, PA 19103
+1 215 988 5500



Although information has been obtained from sources deemed reliable, neither Owner nor JLL makes any guarantees, warranties or representations, express or implied, as to the completeness or accuracy as to the information contained herein. Any projections, opinions, assumptions or estimates used are for example only. There may be differences between projected and actual results, and those differences may be material. The Property may be withdrawn without notice. Neither Owner nor JLL accepts any liability for any loss or damage suffered by any party resulting from reliance on this information. If the recipient of this information has signed a confidentiality agreement regarding this matter, this information is subject to the terms of that agreement.
©2023. Jones Lang LaSalle IP, Inc. All rights reserved.