



For sublease

Office in West Des Moines

4,891 RSF

6701 Westown Parkway
West Des Moines, IA 50266

Property overview

- Sublease availability: 4,891 RSF
 - Available: October 1, 2023
 - Lease expiration: July 31, 2027
- Lease rate: \$17.50 RSF NNN
- Est. OPEX: Available upon request

High visibility from I-80 and Westown Parkway with prime location in West Des Moines' Medical Mile. Easy access to I-235, I-80, and I-35. Located adjacent to multiple single-family and multi-family housing developments, retail, office, commercial, and hospitality.

Justin Lossner, CCIM, SIOR
Senior Managing Director
Justin.Lossner@jll.com
+1 515 371 0846

Lucas Hedstrom
Senior Associate
Lucas.Hedstrom@jll.com
+1 515 564 9269

jll.com/des-moines

Jones Lang LaSalle Americas, Inc.

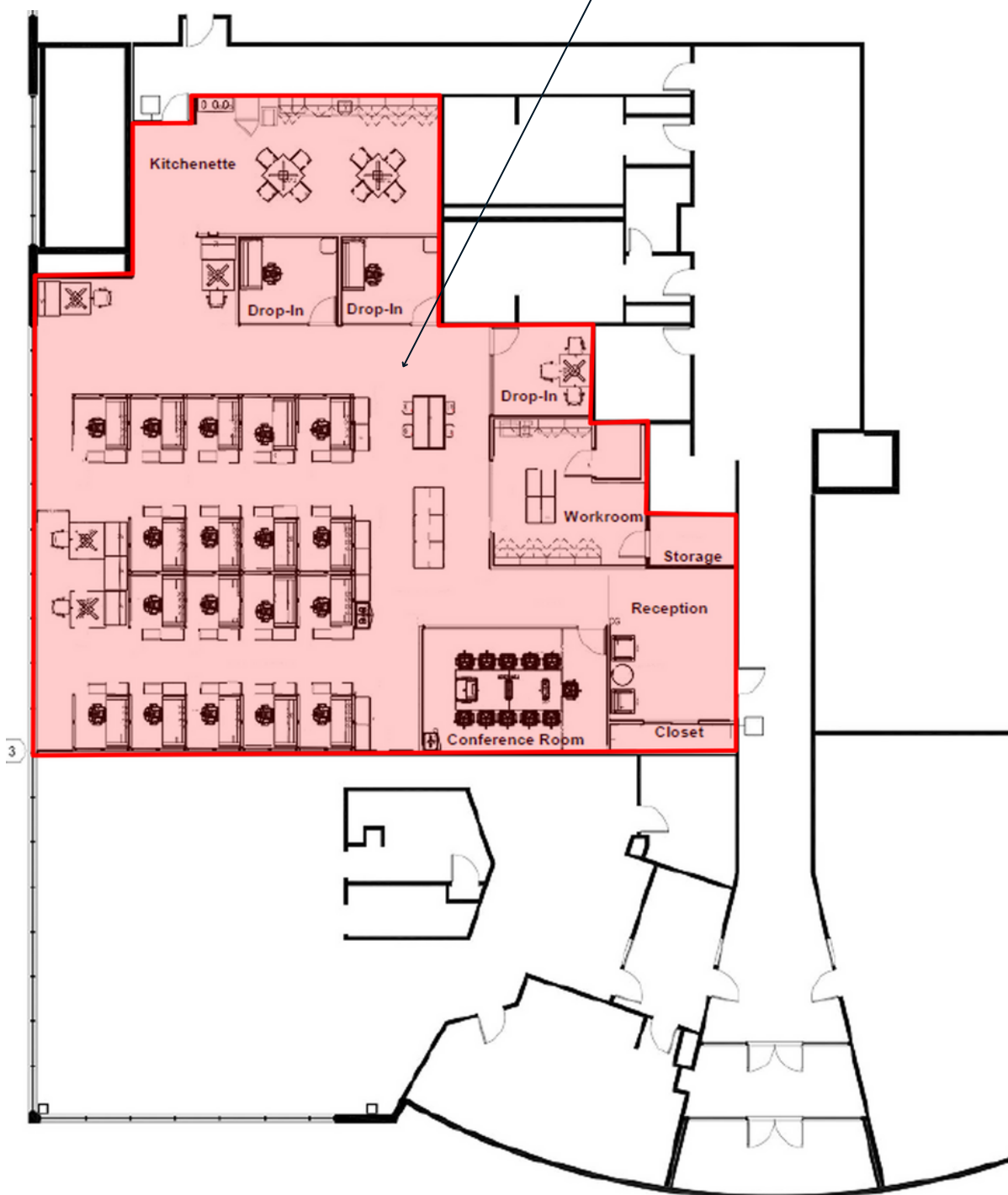
Floor plan | 4,891 RSF

Lease rate: \$17.50 RSF NNN

Est. OPEX: Available upon request

FOR SUBLEASE

4,891 RSF



For sublease

6701 Westtown Parkway | West Des Moines, IA 50266



Justin Lossner, CCIM, SIOR

Senior Managing Director

Justin.Lossner@jll.com

+1 515 371 0846

Lucas Hedstrom

Senior Associate

Lucas.Hedstrom@jll.com

+1 515 564 9269

jll.com/des-moines

Jones Lang LaSalle Americas, Inc.

