



UC San Diego

3333 - 10350

N Torrey Pines Ct

**LINK** | *Torrey Pines*

**UC San Diego** Innovation Hub

[LinkTorreyPines.com](http://LinkTorreyPines.com)



ALTOS

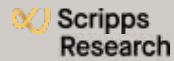


SYNTHETIC GENOMICS®

SORRENTO VALLEY

GOLF COURSE

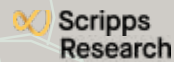
N TORREY PINES ROAD



SBP

© Johnson & Johnson

SBP

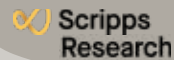


TORREY PINES

LINK

Torrey Pines

UC San Diego Innovation Hub



Gary & Mary  
West Wireless Health  
Institute™

conKwest

astellas

GENERAL ATOMICS

PACIRA  
PHARMACEUTICALS, INC.

PACIRA  
PHARMACEUTICALS, INC.

LabCorp

ThermoFisher  
SCIENTIFIC

GENESEE AVENUE



SALK INSTITUTE  
FOR BIOLOGICAL STUDIES

UC San Diego





Click here to take flight and see the unmatched views that **LINK** has to offer

3344

3366

3377

10350

3333

# LINK TODAY WITH YESTERDAY

Perched above the Pacific Ocean and nestled along the 10th hole of the Torrey Pines Golf Course, Link boasts panoramic views, awe-inspiring sunsets and cool ocean breezes. Come be a part of this community rich with history, overlooking a famous course built on the site of Camp Callan, a U.S. Army installation during World War II.





## Campus Amenities

On campus without ever needing to leave. Enjoy our gym, shower and lockers, impromptu gathering spaces, and incredible views overlooking the Torrey Pines Golf Course and ocean.

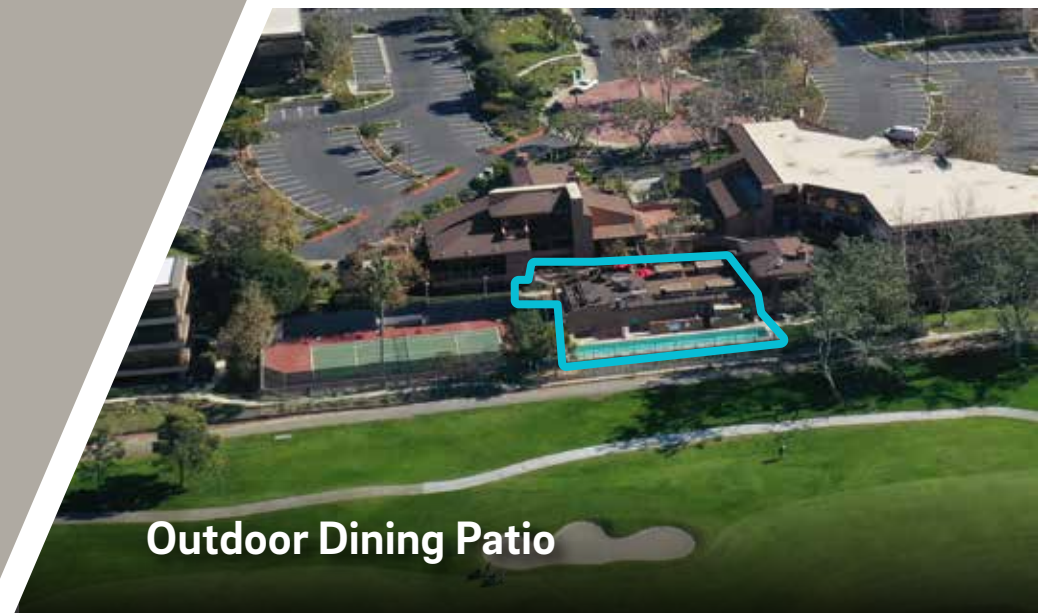
Golf, hike, surf, paddle, run and glide... We offer the quickest access to San Diego's best outdoor activities without wasting extra time.



**Outdoor Seating**



**Fitness Center + Showers & Lockers**



**Outdoor Dining Patio**



**Weekly Food Trucks**



# Nearby Dining Options within $\pm 5$ -minute drive

Greenfinch | Mustangs and Burros

Cliff Hanger Cafe

Bella Vista Social Club

**LINK** Torrey Pines  
UC San Diego Innovation Hub

The Grill at Torrey Pines

The Bistro at The Strand

Cafe Ventanas

The Farmer & The Sea Horse

Joya Kitchen







# LINK TO CHANGE

Are you looking for concrete floors, expansive window lines and modern finishes? Link will change the way you work with just the right workspace.

# Availability Summary

Building - Suite	RSF	Details
3366 - Suite 140	1,722	3 offices, conference room, break area, reception, IT/server room.
3366 - Suite 220	2,190	Cool & creative space with upgraded finishes, polished concrete and ocean/golf course views.
3366 - Suite 310	3,493	5 offices, large conference room, small conference room, open area for cubicles, kitchen, polished concrete to the open area & kitchen. Ocean/golf course views.  Furniture shown on floor plan is not included.
3377 - Suite 150	9,095	Shell space. Direct entry from building exterior. Potential creative space with ocean views.

 [Take a Virtual Tour - Fitness Center](#)



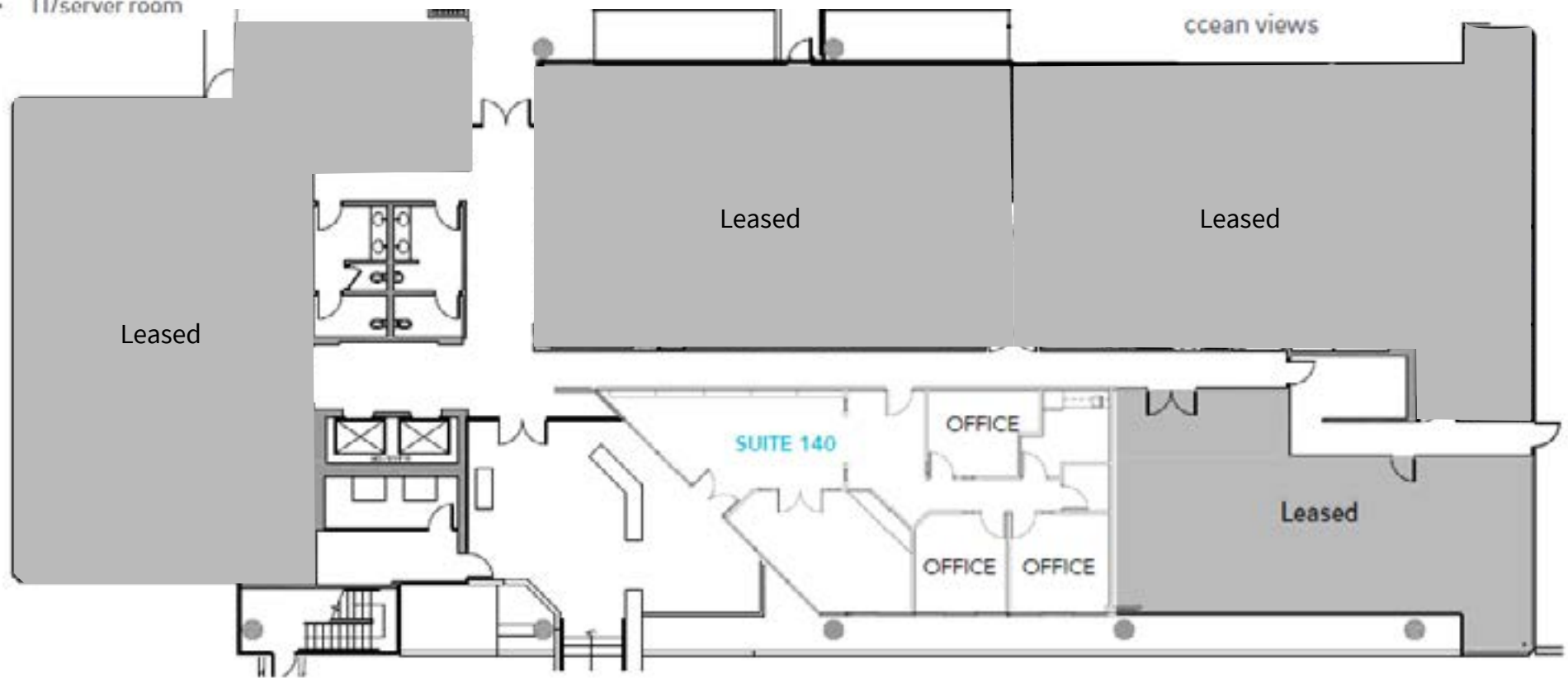
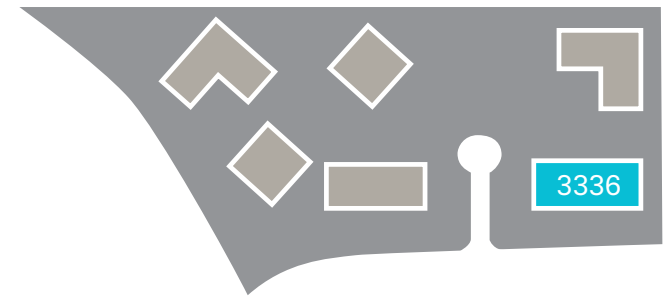
# 3366 N. Torrey Pines Court | **Existing floor plan** Suite 140 - 1,722 sf | available now

- 3 offices
- Conference room
- Break area
- Reception
- IT/server room



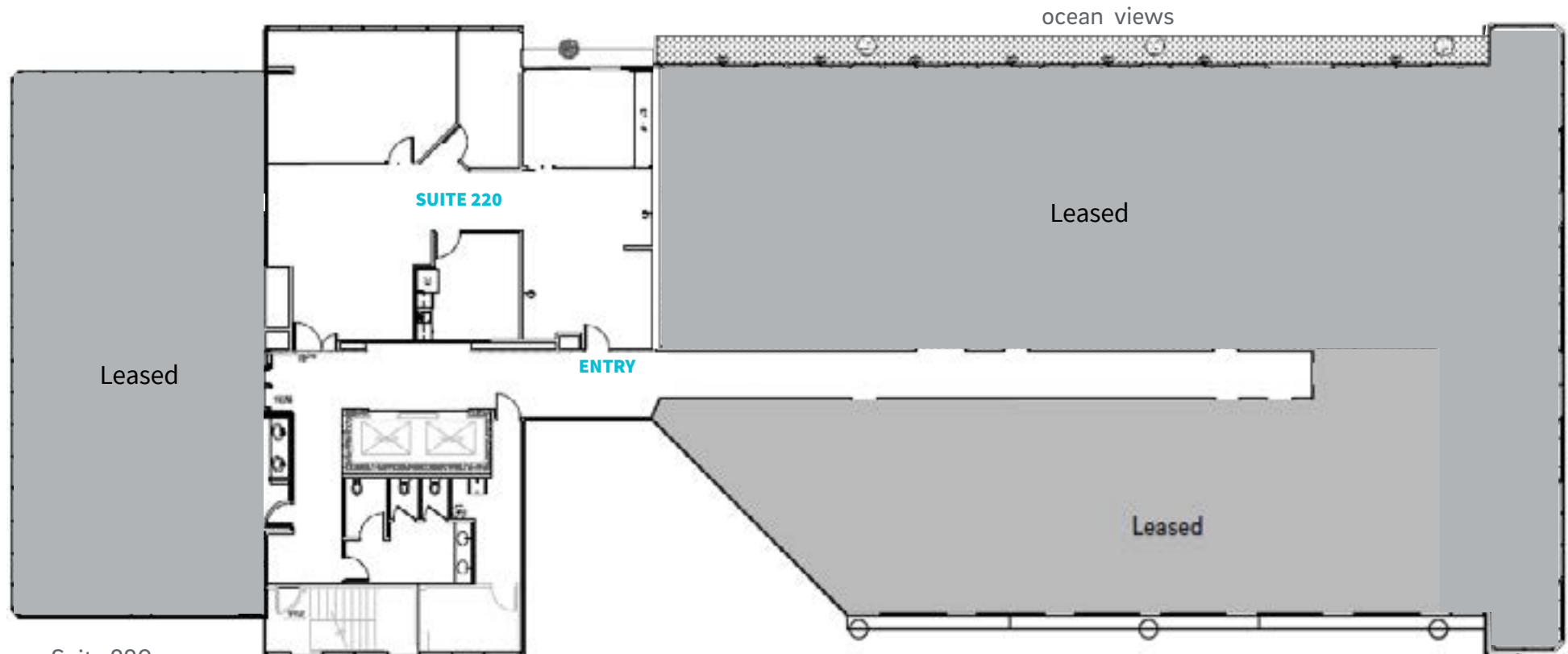
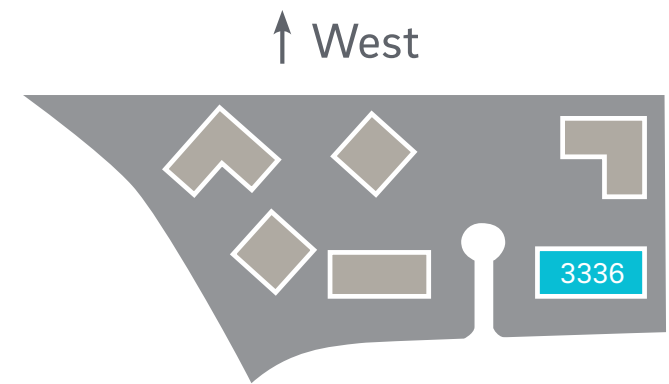
[Take a Virtual Tour - 3366 #140](#)

↑ West





3366 N. Torrey Pines Court | **Existing floor plan**  
Suite 220 - 2,190 sf | available now



- Suite 220
- Ocean/golf course views
- Cool & creative space with upgraded finishes, polished concrete
- Private office
- Huddle room
- Conference room
- Break area
- Open office



[Take a Virtual Tour - 3366 #220](#)

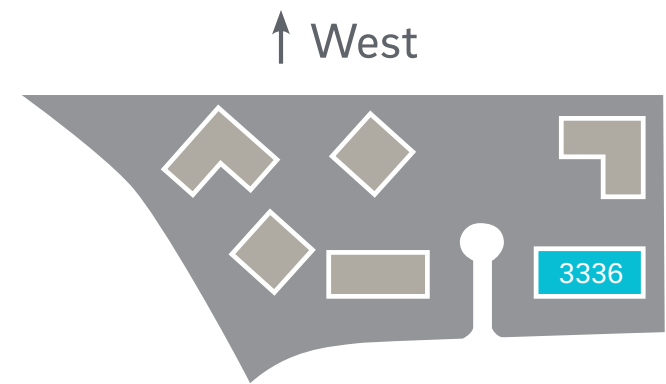




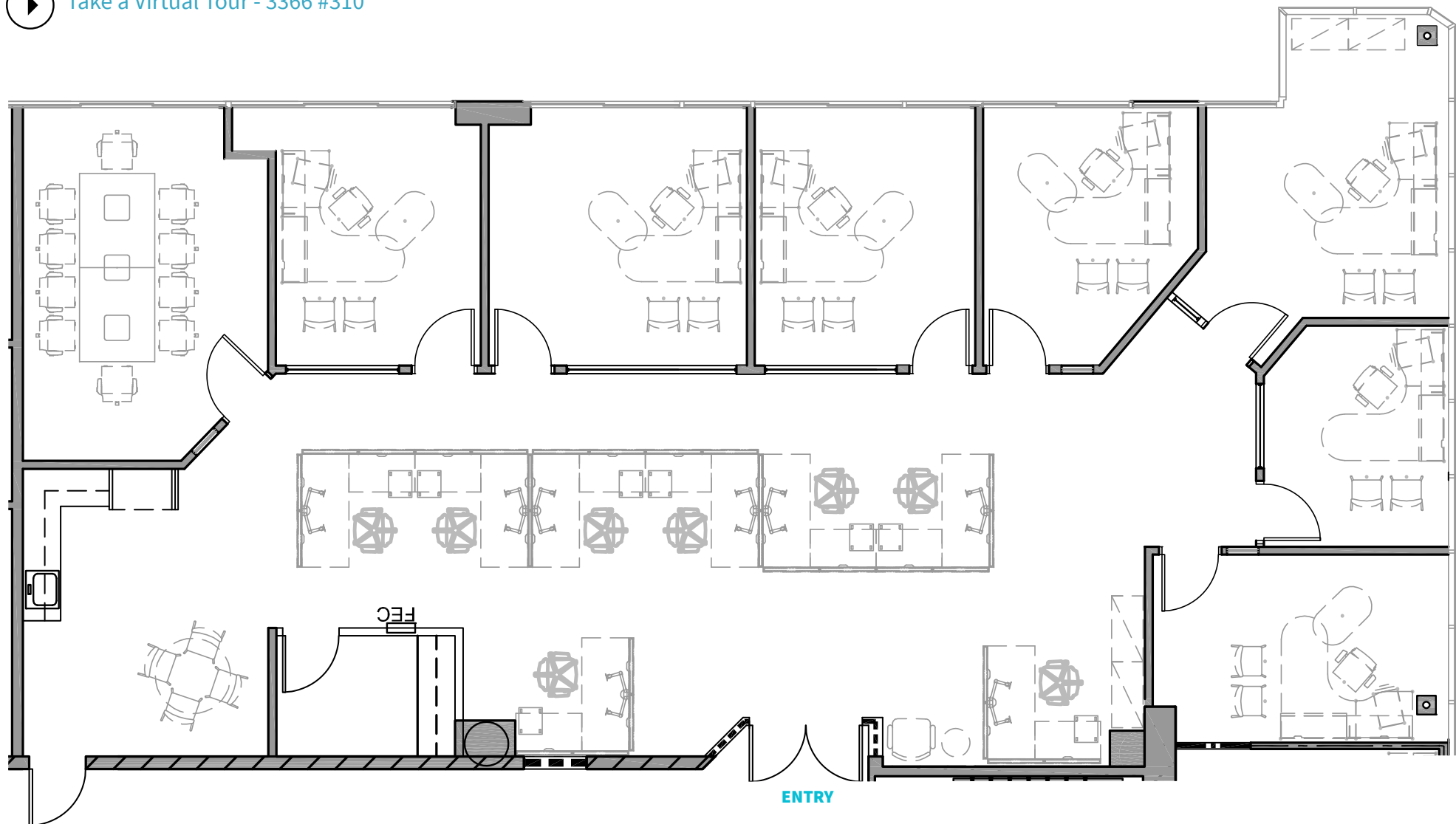
# 3366 N. Torrey Pines Court | **Spec Suite floor plan**

Suite 310 - 3,493 sf | available now

- 5 offices
- Large conference room
- Small conference room
- Open area for cubicles
- Kitchen
- Polished concrete to the open area and kitchen
- Ocean views - see photos on next page
- Furniture not included



[▶ Take a Virtual Tour - 3366 #310](#)





3336 N. Torrey Pines Court  
Suite 310 | **Ocean view photos**



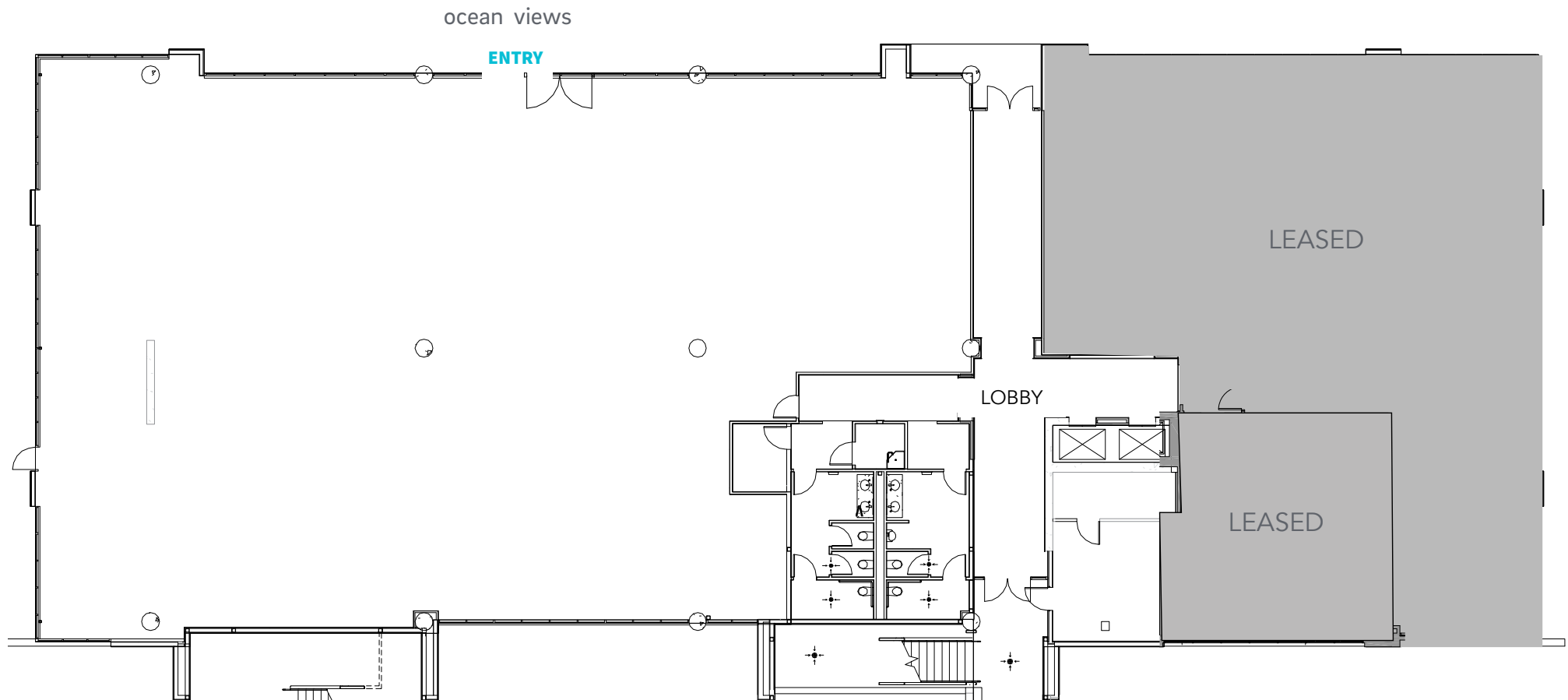
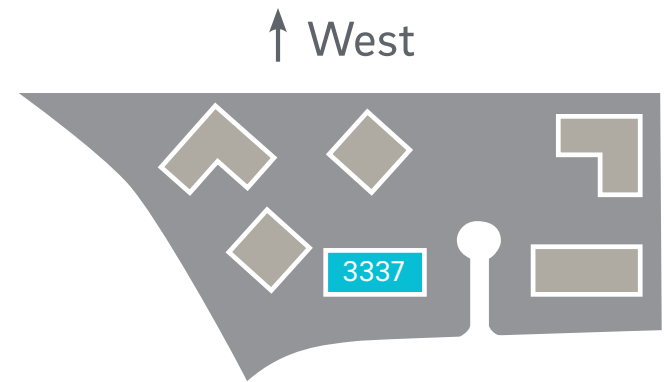


# 3377 N. Torrey Pines Court | **Existing floor plan**

## Suite 150 - 9,095 sf | available now

- Shell Condition - potential creative space
- Direct entry from building exterior
- Ocean views

 [Take a Virtual Tour - 3377 #150](#)

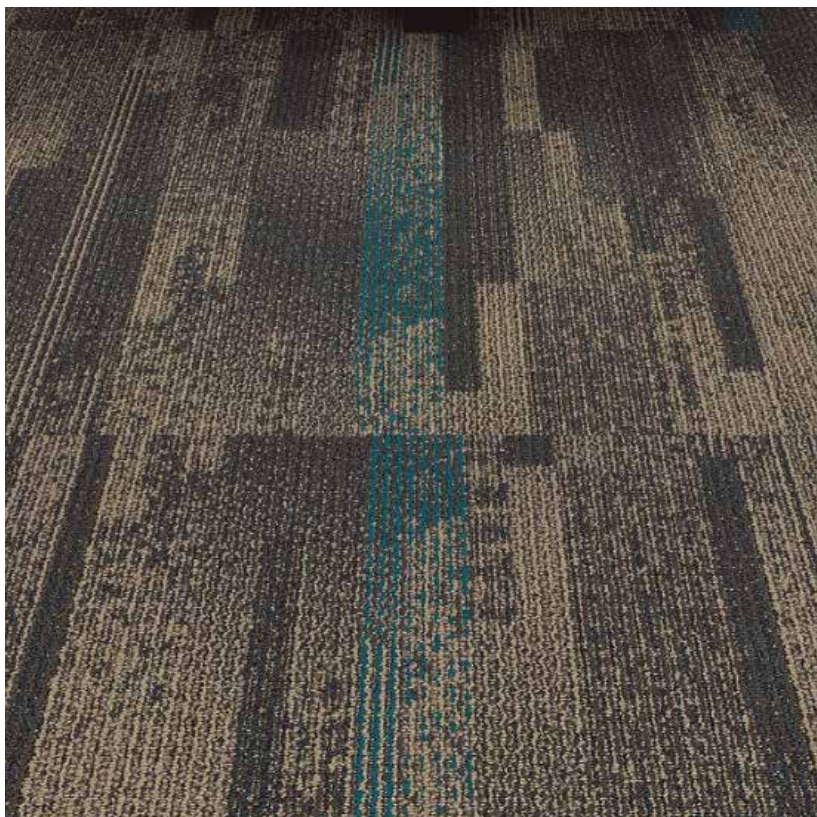


3377 N. Torrey Pines Court | [Exterior photo](#)





## Spec Suite Finishes



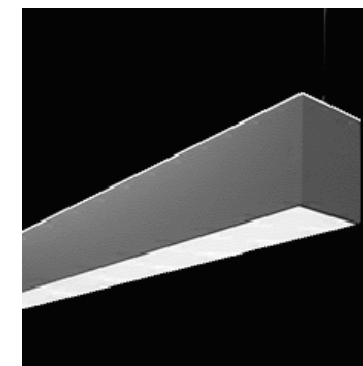
CARPET



ENTRY CHANDELIER



ISLAND PENDANT



GENERAL LIGHTING



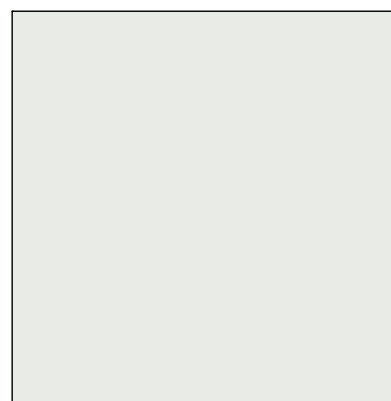
SOLID SUFACE COUNTERTOP



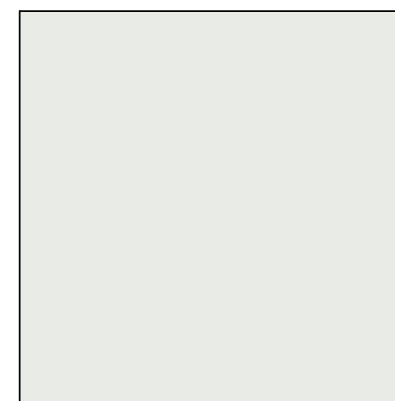
MILLWORK LAMINATE



TILE BACKSPLASH



FIELD PAINT



WALL BASE



**Tim Olson**  
858.410.1253  
tim.olson@jll.com  
RE lic. #01364117

**Greg Moore**  
858.410.6367  
greg.moore@jll.com  
RE lic. #02068852

Although information has been obtained from sources deemed reliable, neither Owner nor JLL makes any guarantees, warranties or representations, express or implied, as to the completeness or accuracy as to the information contained herein. Any projections, opinions, assumptions or estimates used are for example only. There may be differences between projected and actual results, and those differences may be material. The Property may be withdrawn without notice. Neither Owner nor JLL accepts any liability for any loss or damage suffered by any party resulting from reliance on this information. If the recipient of this information has signed a confidentiality agreement regarding this matter, this information is subject to the terms of that agreement. ©2022.Jones Lang LaSalle IP, Inc. All rights reserved.