

# parkway center.



**4897 west lake park blvd.**  
salt lake city, ut



Jones Lang LaSalle Brokerage, Inc.



# BUILDING HIGHLIGHTS



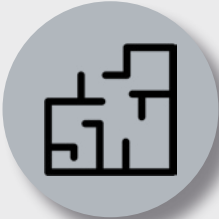
**\$23.50 FSG**  
lease rate



**7/1,000**  
parking ratio



**CLASS A**  
building and finishes



**EFFICIENT**  
layout



**EASY ACCESS**  
to Bangerter Highway,  
Highway 201 and  
Mountain View Corridor



**LOCATION**  
conveniently  
located near many  
amenities



**FLEX WAREHOUSE**  
flex/light industrial area  
with rollup door space on first  
floor (3,538 RSF)

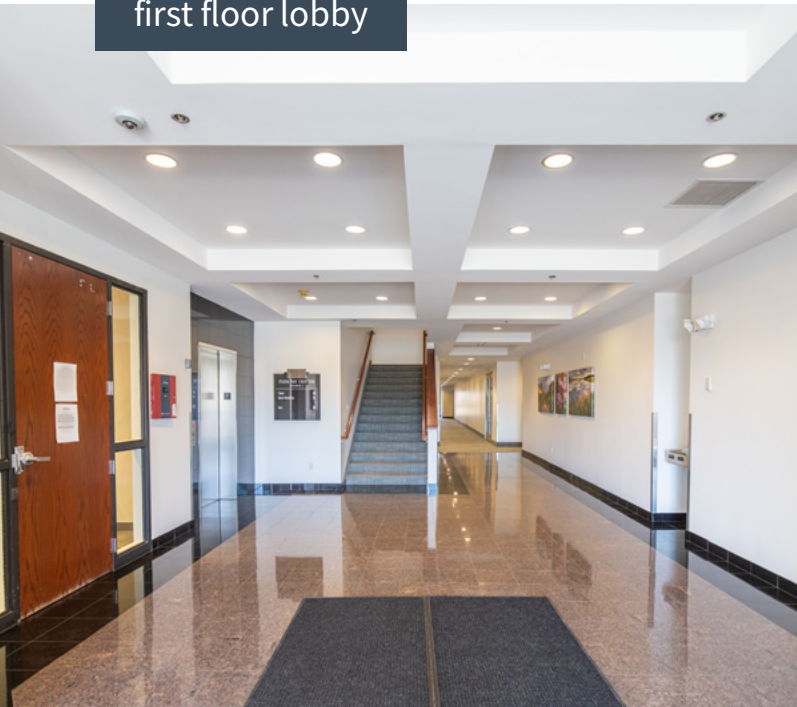


**REDUNDANT  
FIBER**



accessible location

first floor lobby

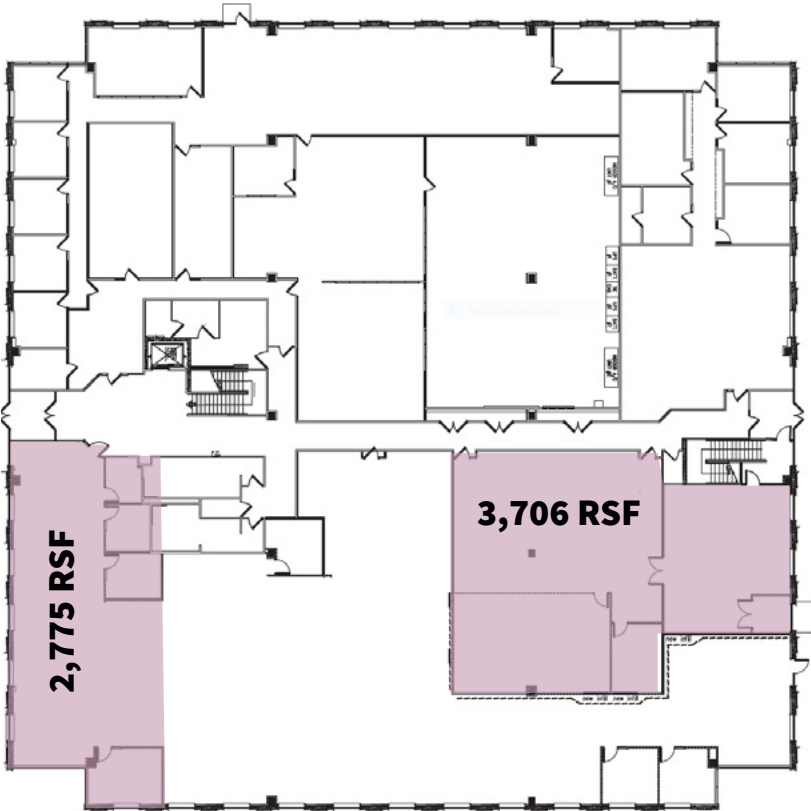


reception rendering



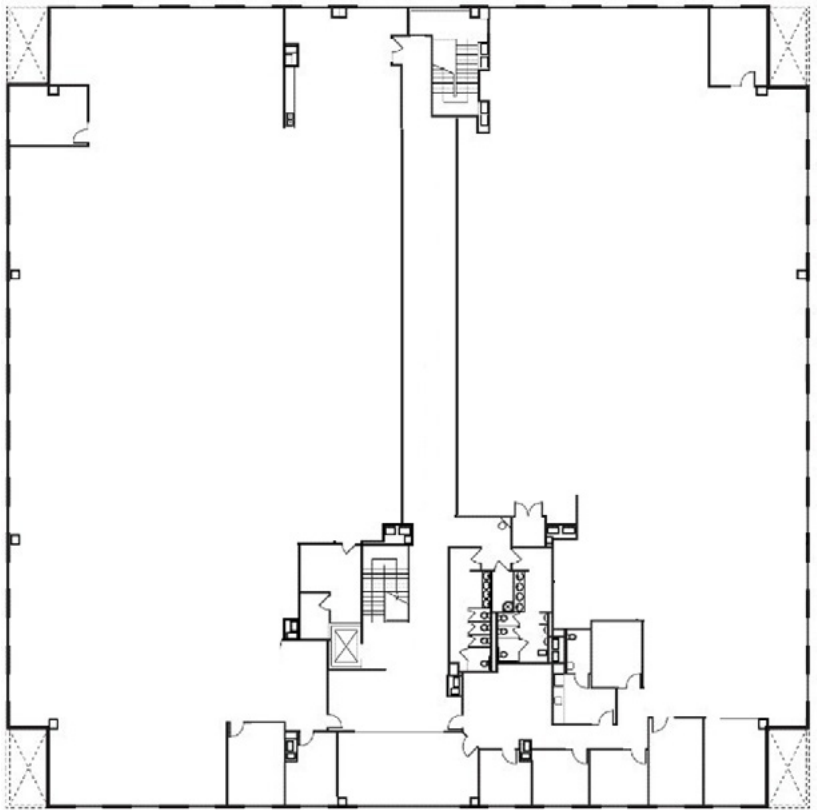
# AVAILABLE SPACE

## FLOOR PLANS

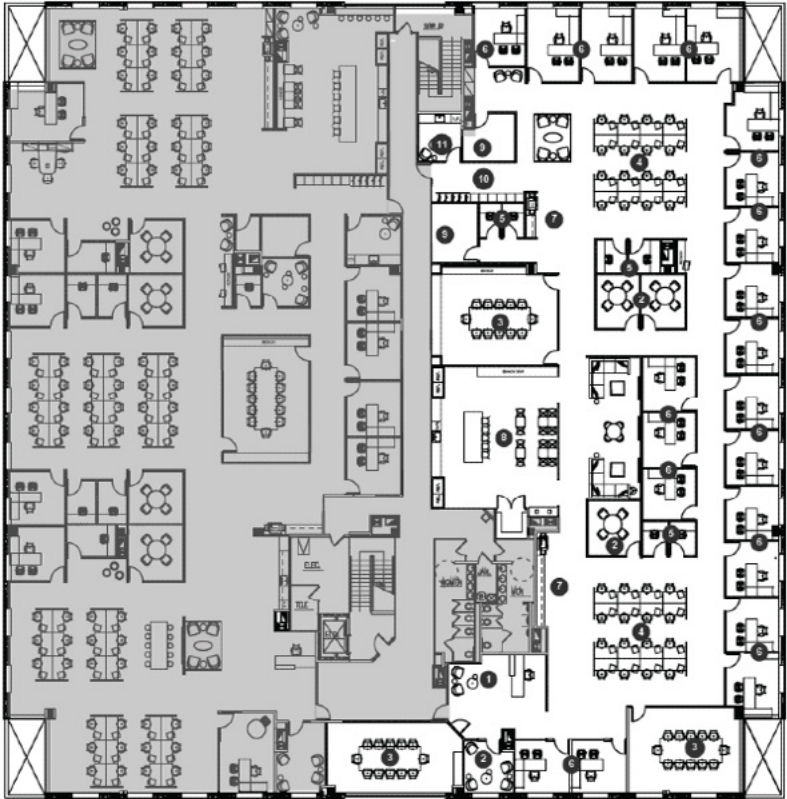


**FLOOR 1**  
2,775 RSF | \*3,706 RSF  
total: 6,481 RSF

\*flex/light industrial area with rollup door



**FLOOR 2**  
28,524 RSF  
full floor availability



**CONCEPTUAL**  
Multi-Tenant  
Floor Plan

### open office renderings

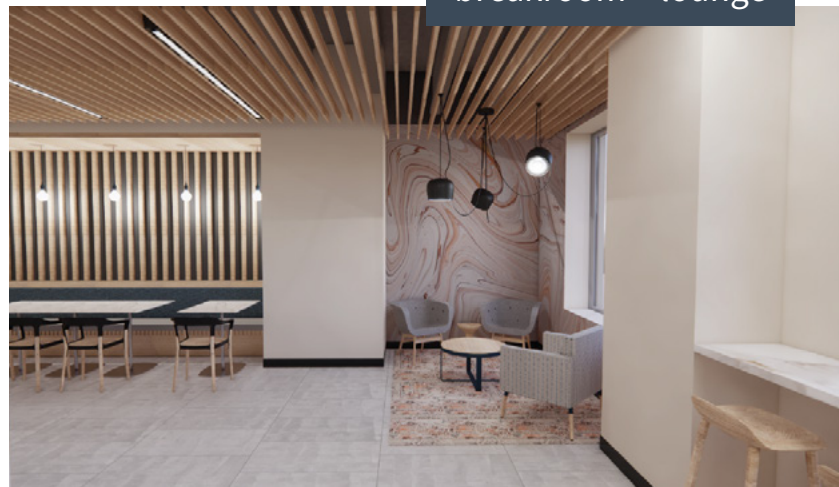




CONCEPTUAL  
RENDERINGS



breakroom + lounge



conference + collaboration rooms



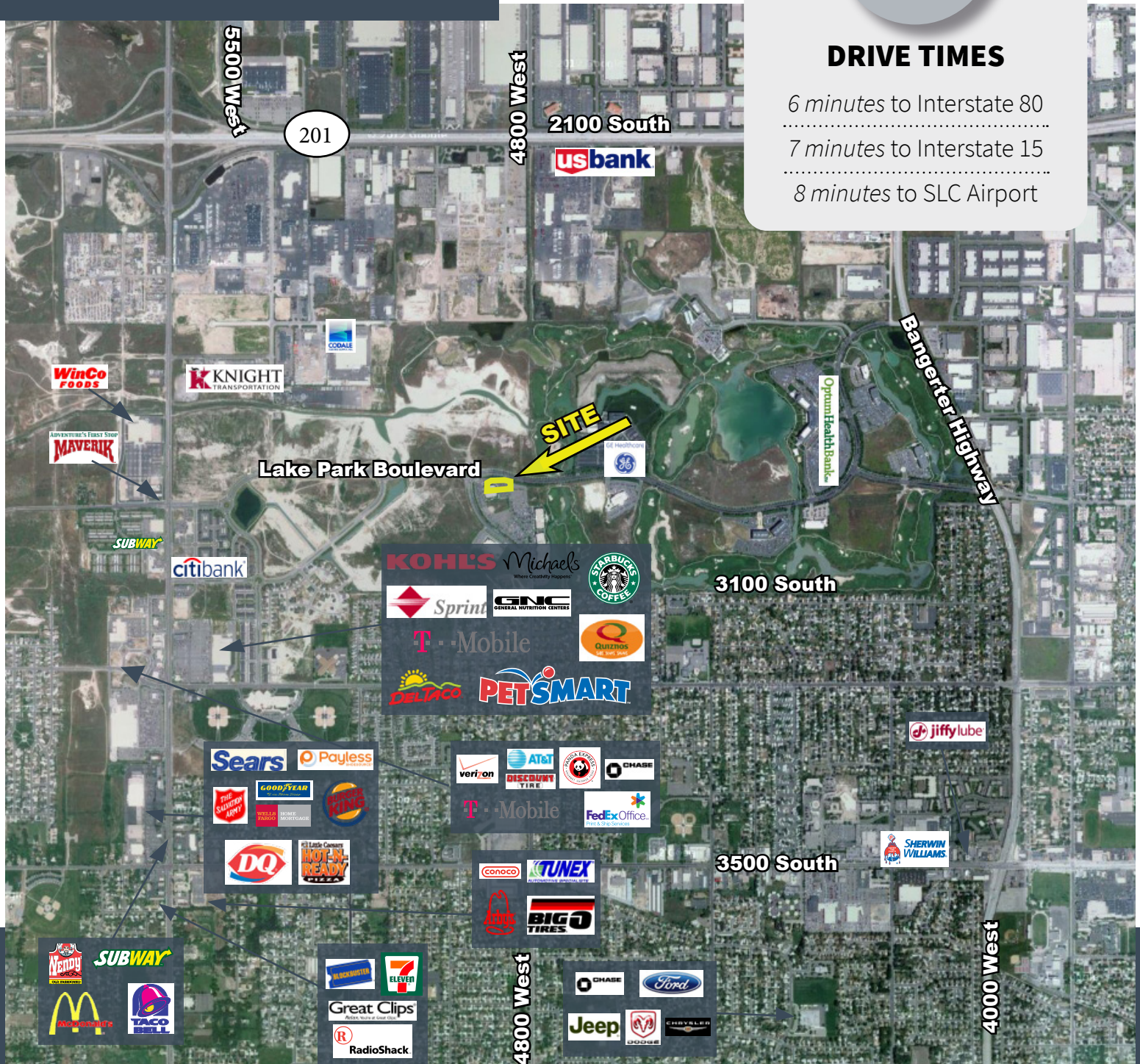
parkway center.

# AMENITIES MAP



## DRIVE TIMES

6 minutes to Interstate 80  
7 minutes to Interstate 15  
8 minutes to SLC Airport



## Contact Information



**Jillian Johnson**  
jillian.johnson@jll.com  
+1 801 456 9517