



Immediately Available

# Sublease

**32,392 RSF available**

- Term through 10/31/2027
- Immediate occupancy
- Furniture available
- Spectacular views



One Pierce Place  
Itasca, IL 60143

**TODD SCHAEFER**

Managing Director  
312 228 3676  
todd.schaefer@am.jll.com

**DOUG SHEHAN**

Executive Vice President  
773 458 1382  
doug.shehan@am.jll.com





**Sublease | Immediately Available**

One Pierce Place  
Itasca, IL 60143

## Property features



Café



Fitness center



Conference room



Covered parking



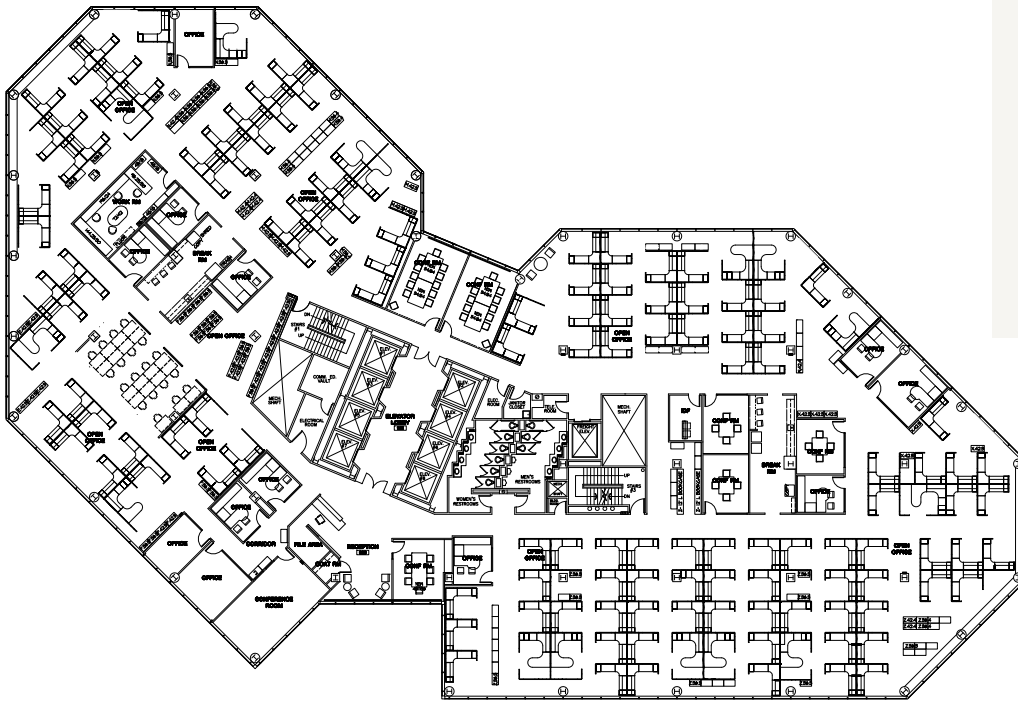
**Sublease | Immediately Available**

One Pierce Place  
Itasca, IL 60143

## Site features

### 9th Floor

- 1 reception
- 7 conference rooms
- 2 break rooms
- 12 private offices
- 141 workstations
- 19 benching seats



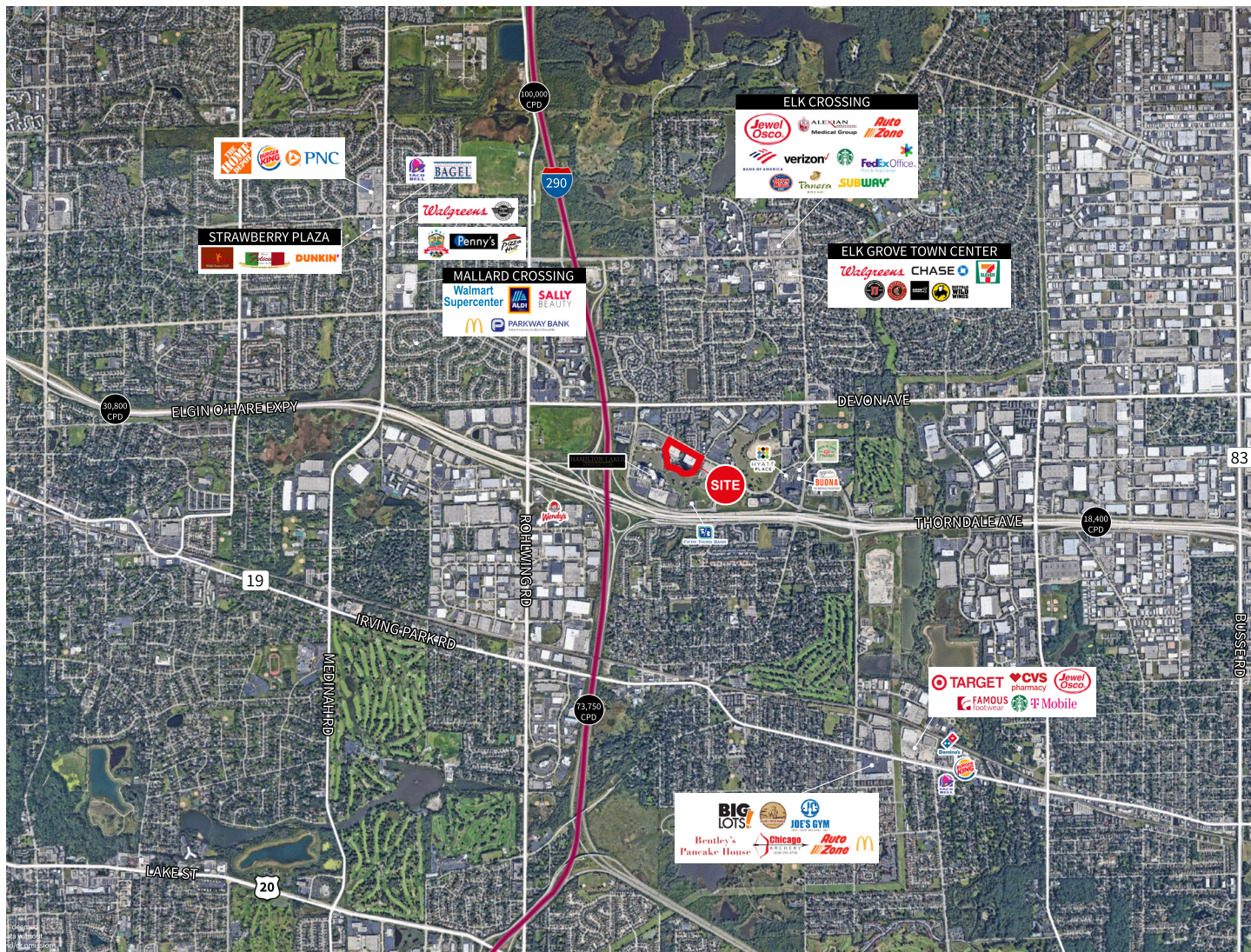
NINTH FLOOR  
ONE PIERCE PLACE, ITASCA





## Location features

- Ideal consolidation location
- Easy highway access – I 355, I 290, I 90
- Abundant surrounding amenities



### **TODD SCHAEFER**

Managing Director  
312 228 3676  
todd.schaefer@am.jll.com

### **DOUG SHEHAN**

Executive Vice President  
773 458 1382  
doug.shehan@am.jll.com

Although information has been obtained from sources deemed reliable, JLL does not make any guarantees, warranties or representations, express or implied, as to the completeness or accuracy as to the information contained herein. Any projections, opinions, assumptions or estimates used are for example only. There may be differences between projected and actual results, and those differences may be material. JLL does not accept any liability for any loss or damage suffered by any party resulting from reliance on this information. If the recipient of this information has signed a confidentiality agreement with JLL regarding this matter, this information is subject to the terms of that agreement. ©2022. Jones Lang LaSalle IP, Inc. All rights reserved.