



CARONDELET

◀ EAST + WEST ▶

7710-7730 Carondelet Avenue | Clayton, MO 63105

Jones Lang LaSalle Americas, Inc., a licensed real estate broker in 48 states



DOWNTOWN CLAYTON MEETS AFFORDABILITY

Located in the heart of downtown Clayton, Carondelet East and West provides tenants with a coveted location all while staying within budget.

With a walkability score of 91, this is a walker's paradise being within blocks of Centene's campus, the St. Louis County Courthouse, and a variety of hotels most notably the Ritz-Carlton.

Get a taste of Clayton right outside your door. The Carondelet buildings are just steps away from some of the city's top-notch restaurants including the Capital Grille, 801 Chophouse, Pastaria, and the Crossing.

PROPERTY HIGHLIGHTS



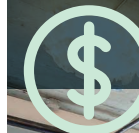
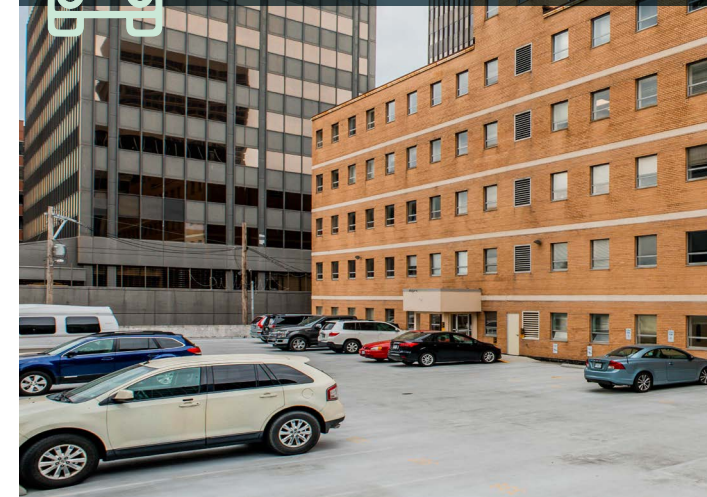
Updated main lobby and common areas



On-site dining - Cafe Cornucopia located on the 7710 side lower level

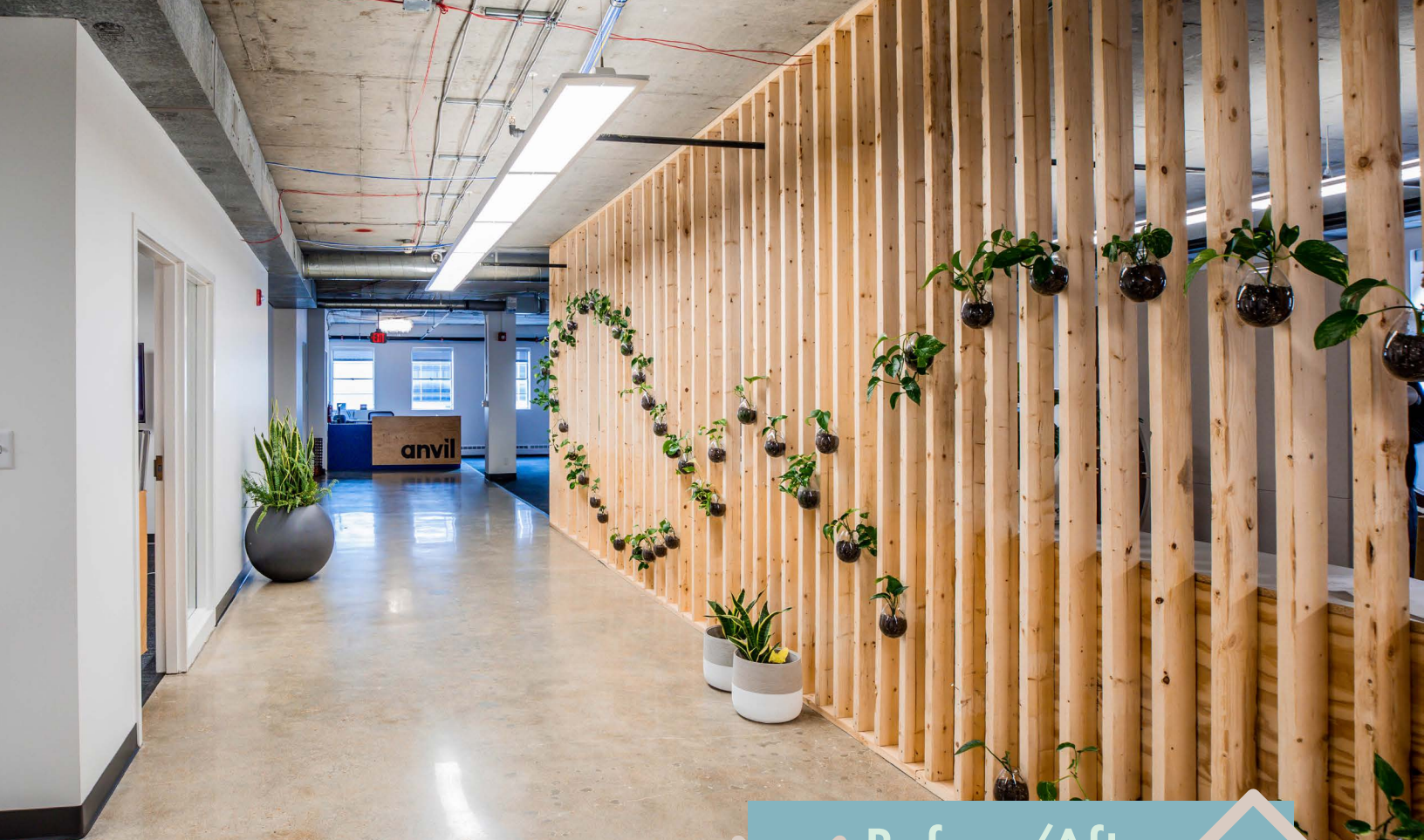


Covered parking in reserved garage and surface lots available



Lease rate: **\$21.00/SF, full service**





Before/After



OFFICE SPACE RE-IMAGINED

Give your business and employees a place to flourish with a new home for your company. Carondelet East and West offers a variety of fully-customizable suites in varying sizes waiting to let your brand shine.

FLOOR PLANS

±576 - 7,826 contiguous square feet available



CLAYTON AMENITIES



RESTAURANTS

The Capital Grille
Tony's/Anthony's Bar
Plaza Grill Restaurant
IL Palato Italian Restaurant
Tropical Smoothie Cafe
Plaza Grill
Katerina's Greek Restaurant
C.J. Mugg's
Peel Wood Fired Pizza
801 Chophouse
Wasabi Sushi Bar
Blue Elephant Royal Thai Cuisine
Kaldi's Coffee
Potbelly Sandwich Shop
Café Napoli
Pasteria
Starbucks
Chipotle
Smoothie King
John P Fields
Sauce on the Side
Cantina Laredo
Louie's Wine Dive
The Crossing
the BAO
Subway
Crushed Red
Avenue Restaurant



HOTELS

Clayton Plaza Hotel
Le Méridien St. Louis Clayton
Seven Gables Inn
The Ritz-Carlton



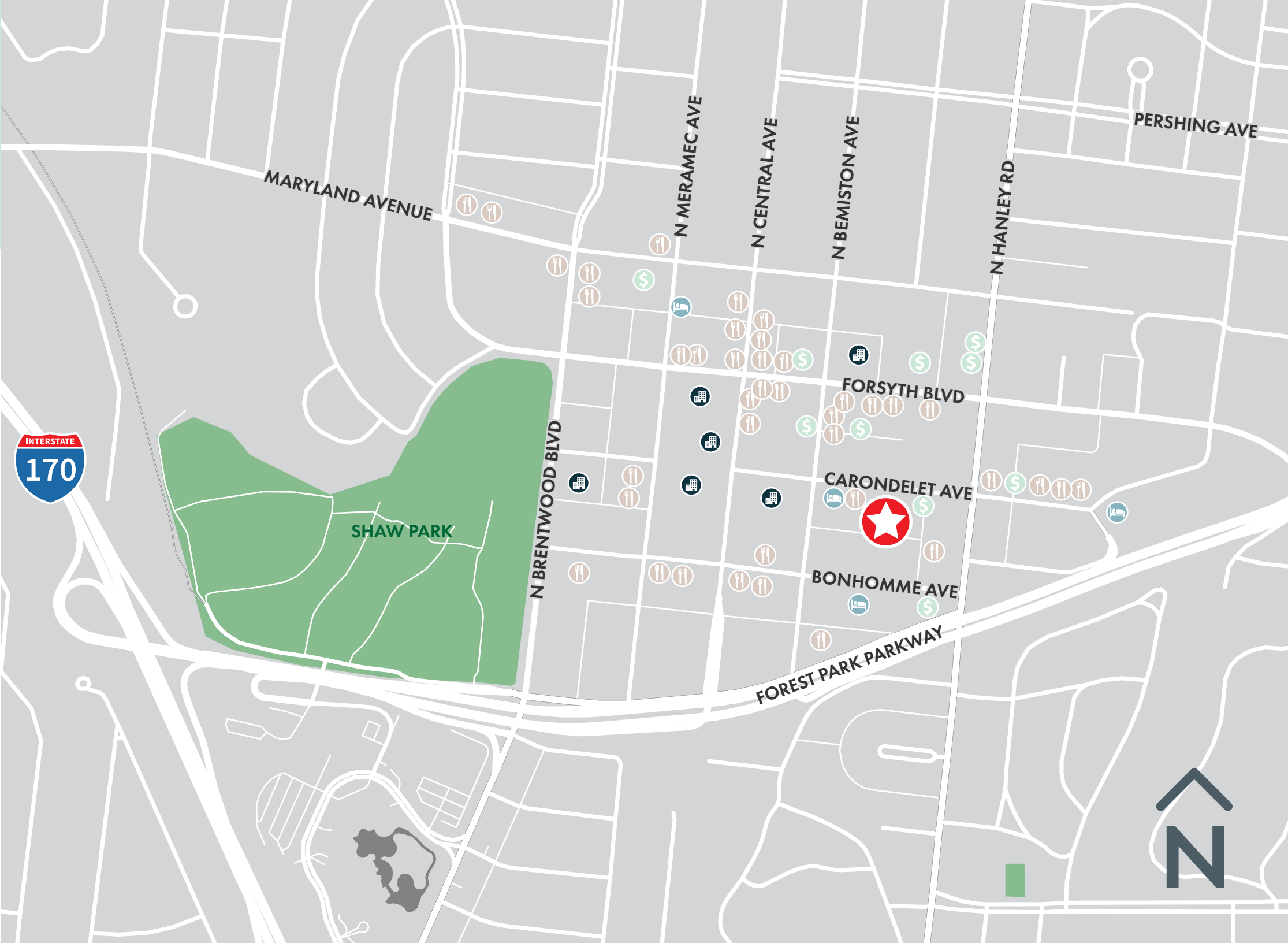
BANKS

BOS (Bank of Springfield)
Bank of America
Sterling Bank
Commerce Bank
Midwest Regional Bank
PNC Bank
US Bank



GOVERNMENT BUILDINGS

Clayton City Hall
St. Louis County Police Dept
St. Louis County Dept of Justice Services
St. Louis County Circuit Clerk
St. Louis County Court House





CARONDELET

◀ EAST + WEST ▶

PROFESSIONALLY
MANAGED BY



LAND DYNAMICS INC.
Full Service Real Estate Solutions

LEASING CONTACTS

David Biales, CCIM
+1 314 261 7368
david.biales@am.jll.com

Stephen Lordo
+1 314 338 2089
stephen.lordo@am.jll.com



jll.com/st-louis
+1 314 338 2080

Jones Lang LaSalle Americas, Inc., a licensed real estate broker in 48 states | **DISCLAIMER** Although information has been obtained from sources deemed reliable, neither Owner nor JLL makes any guarantees, warranties or representations, express or implied, as to the completeness or accuracy as to the information contained herein. Any projections, opinions, assumptions or estimates used are for example only. There may be differences between projected and actual results, and those differences may be material. The Property may be withdrawn without notice. Neither Owner nor JLL accepts any liability for any loss or damage suffered by any party resulting from reliance on this information. If the recipient of this information has signed a confidentiality agreement regarding this matter, this information is subject to the terms of that agreement. ©2022. Jones Lang LaSalle IP, Inc. All rights reserved.