



Creative Sublease with Views

655 MONTGOMERY STREET

15th Floor : 17,616 RSF

16th Floor : 17,389 RSF

*Flexible Term: 2 – 7+ Years | Can be leased together or separate
Available upon landlord consent*

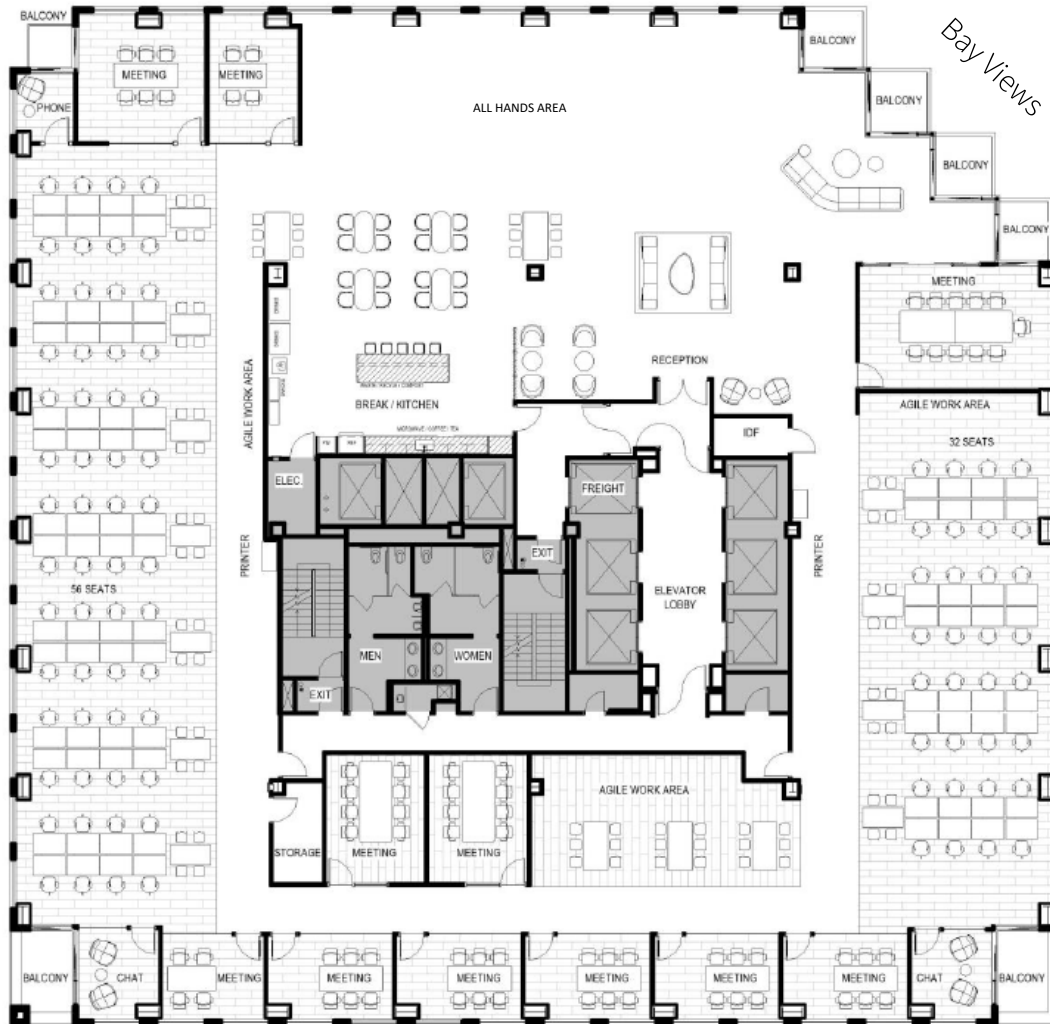
MATT ALJETS
415.354.6905
matt.aljets@jll.com
RE Lic #: 01965117

CARLYE PARKER
415.228.3130
carlye.parker@jll.com
RE Lic #: 02089807



655 Montgomery

15th Floor



RSF	17,616 RSF
AVAILABLE	Upon Landlord Consent
TERM	2 – 7+ years
RATE	Please inquire

SUITE FEATURES

- Full 15th Floor – 17,616 Square Feet
- Private, Accessible Balconies
- Large Café On North-facing Window Line Offering Views Of San Francisco Bay, Coit Tower, Alcatraz
- (1) Board Room
- (3) Large Meeting Rooms
- (7) Medium Meeting Rooms
- (3) Small Meeting Rooms
- 112 Workstations, Motorized Sit/Stand

MATT ALJETS
415.354.6905
matt.aljets@jll.com
RE Lic #: 01965117

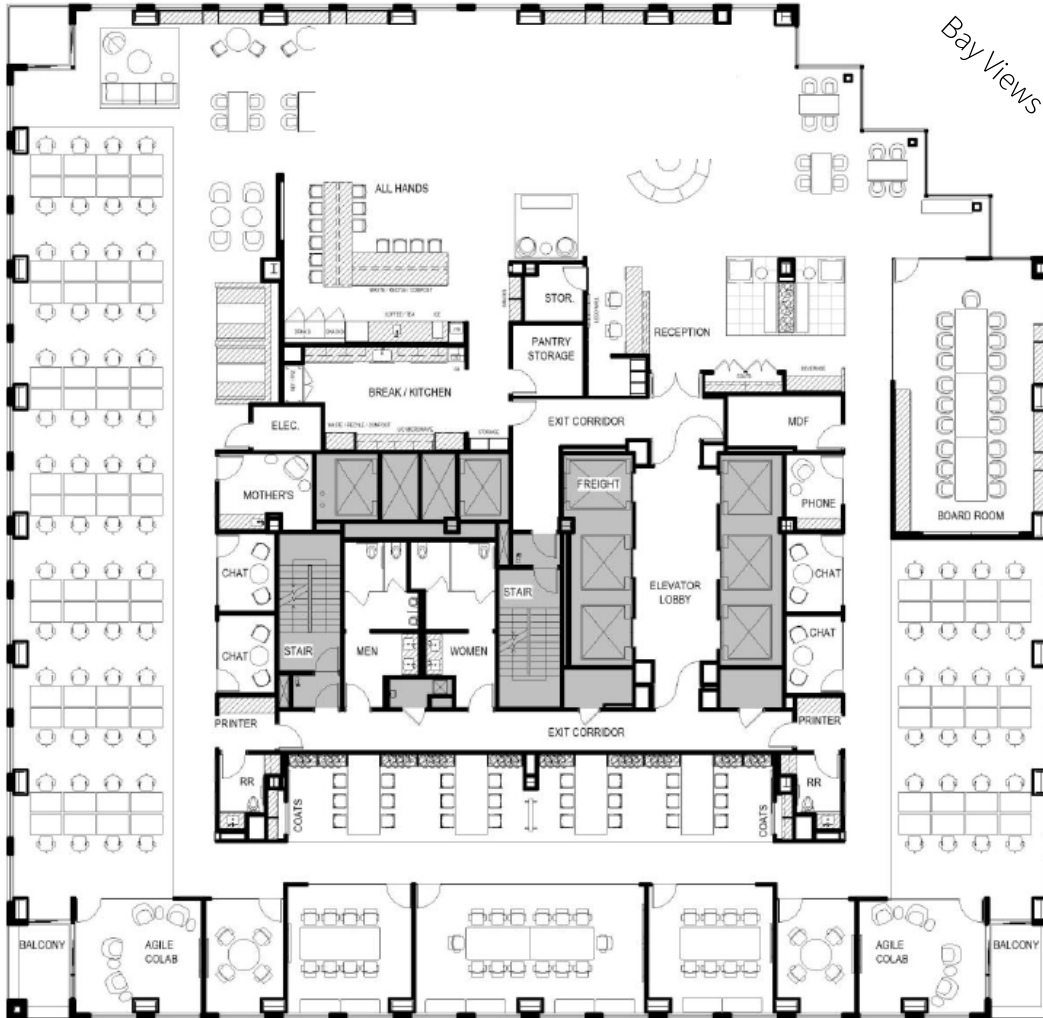
CARLYE PARKER
415.228.3130
carlye.parker@jll.com
RE Lic #: 02089807



655 Montgomery

16th Floor

*Hypothetical Plan



RSF

17,389 RSF

AVAILABLE

Upon Landlord Consent

TERM

2 – 7+ years

RATE

Please inquire

Montgomery Street

SUITE FEATURES

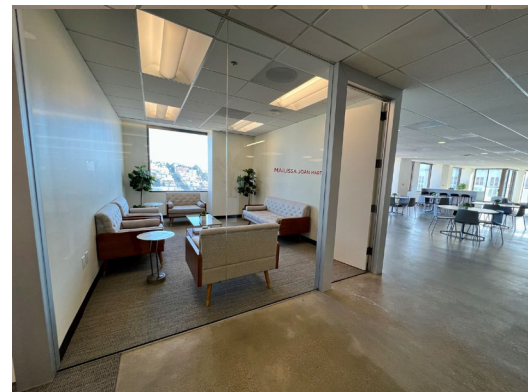
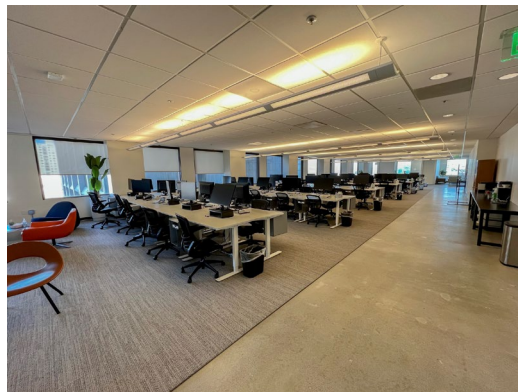
- Full 16th Floor – 17,389 Square Feet
- Private, Accessible Balconies
- Large Café On North-facing Window Line Offering Views Of San Francisco Bay, Coit Tower, Alcatraz
- Currently in Shell Condition
- Full Improvement Allowance Available
- Can Be Subleased Together or Separately

MATT ALJETS
415.354.6905
matt.aljets@jll.com
RE Lic #: 01965117

CARLYE PARKER
415.228.3130
carlye.parker@jll.com
RE Lic #: 02089807



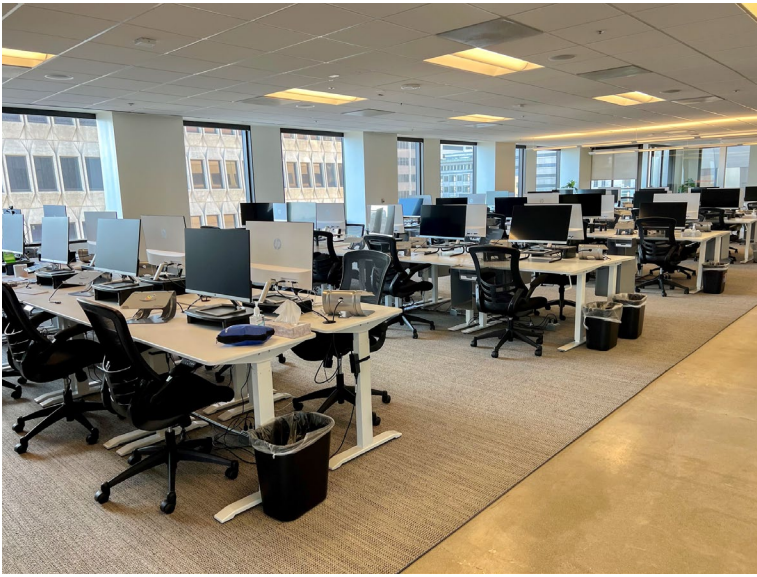
655 Montgomery







MATT ALJETS
415.354.6905
matt.aljets@jll.com
RE Lic #: 01965117

CARLYE PARKER
415.228.3130
carlye.parker@jll.com
RE Lic #: 02089807





BUILDING FEATURES

-  Newly-constructed tenant lounge / conference center
-  Recently-renovated fitness center with shower / locker facilities
-  Onsite secure bicycle storage and vehicle parking
-  24/7/365 onsite security and professionally property managed

MATT ALJETS
415.354.6905
matt.aljets@jll.com
RE Lic #: 01965117

CARLYE PARKER
415.228.3130
carlye.parker@jll.com
RE Lic #: 02089807

