



2500
WESTFIELD

2500 Westfield | Elgin, IL



2500 WESTFIELD

2500 Westfield is a 3-building complex, totaling 420,903 SF, located in Elgin with easy access to I-90 interstate. The building features a modern 2-story lobby, beautiful outdoor space, 65,000 SF floorplates, as well as:

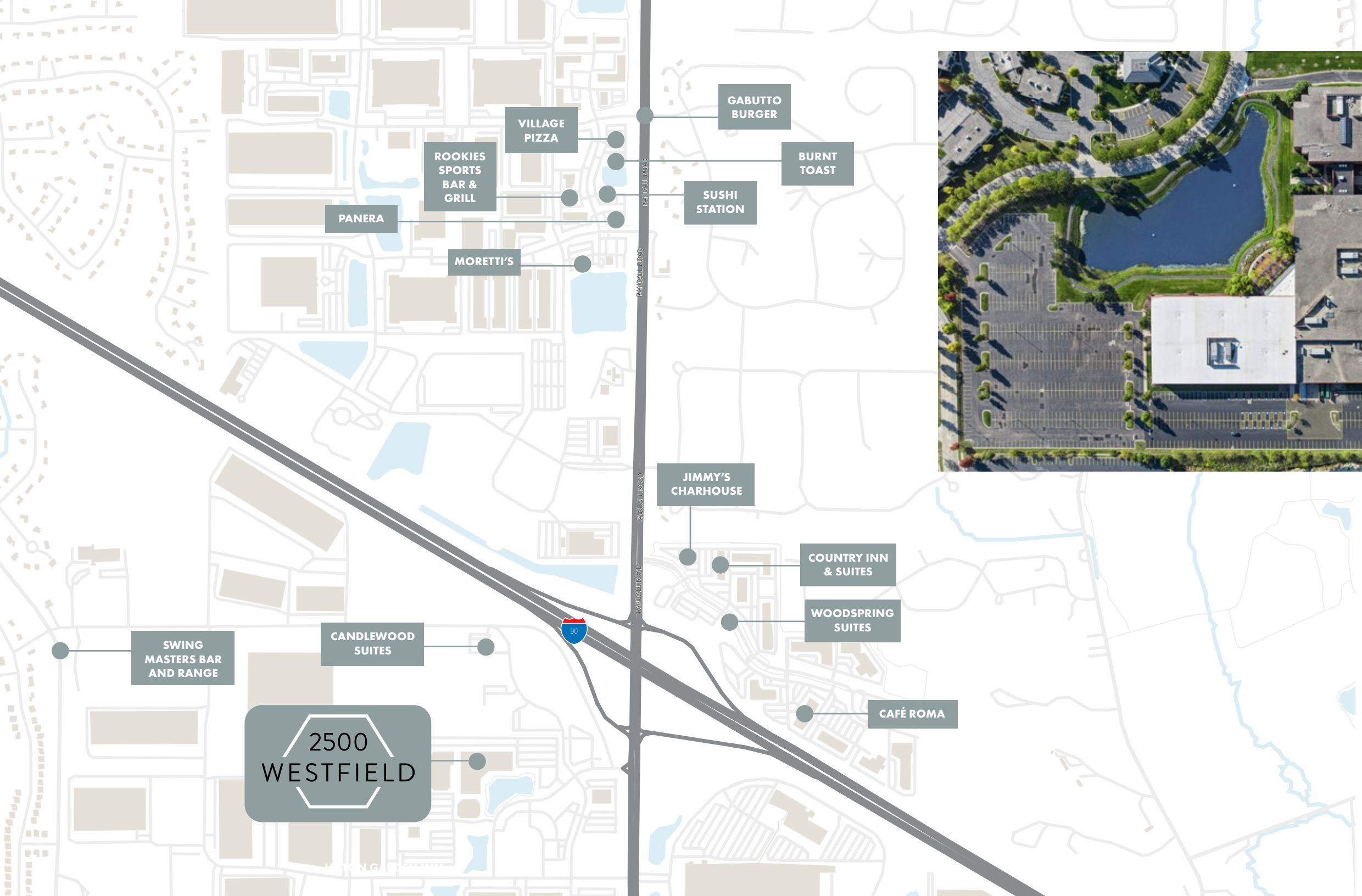
- **Deli with outdoor seating**
- **5 to 1,000 SF parking ratio**
- **Conferencing facility**
- **Energy Star-rated**
- **24/7 manned security**
- **BOMA 360**

Tour Virtually >



2500
WESTFIELD





SUPERIOR ACCESS

Located in Elgin and only 35 miles from downtown Chicago, 2500 Westfield offers tenants quick access to I-90 Interstate. Additionally, 2500 Westfield is only a short 4-minute drive to the Big Timber Metra train station.



For leasing information please contact:

Daniel J. Svachula

T+ 1 773 490 8555

Dan.Svachula@jll.com

Allyson Birchmeier

T+ 773 632 2511

Allyson.Birchmeier@jll.com



2500 WESTFIELD

2500 Westfield | Elgin, IL