



±38AC Available Near Samsung

±38 Acres Located on Future SE Loop

- » Just southwest of future \$16B Samsung plant site (±1,200 AC), of proposed \$2B Applied Materials plant site, and of planned Titan Development (180 AC)
- » Conveniently located near US-79 for easy access to Toll Road 130 and I-35
- » Sits next to future SE Loop - Connecting US-79 to Toll Road 130
- » Directly south of RCR Taylor Logistics Park (a ±750 AC industrial park)

Demographics	3 mile	5 mile	7 mile
Estimate Population	9,168	54,232	121,247
Estimate Households	2,821	17,701	39,270
Avg. Household Income	\$88,920	\$110,512	\$119,210
Daytime Population	661	6,877	18,224
Traffic Counts	CPD		
US-79	19,088		

12135 FM 1660

Hutto, TX 78634

Call For Pricing:

Graham Schmergel

Executive Vice President

+1 512 861 3423

Graham.Schmergel@jll.com

us.jll.com/retail

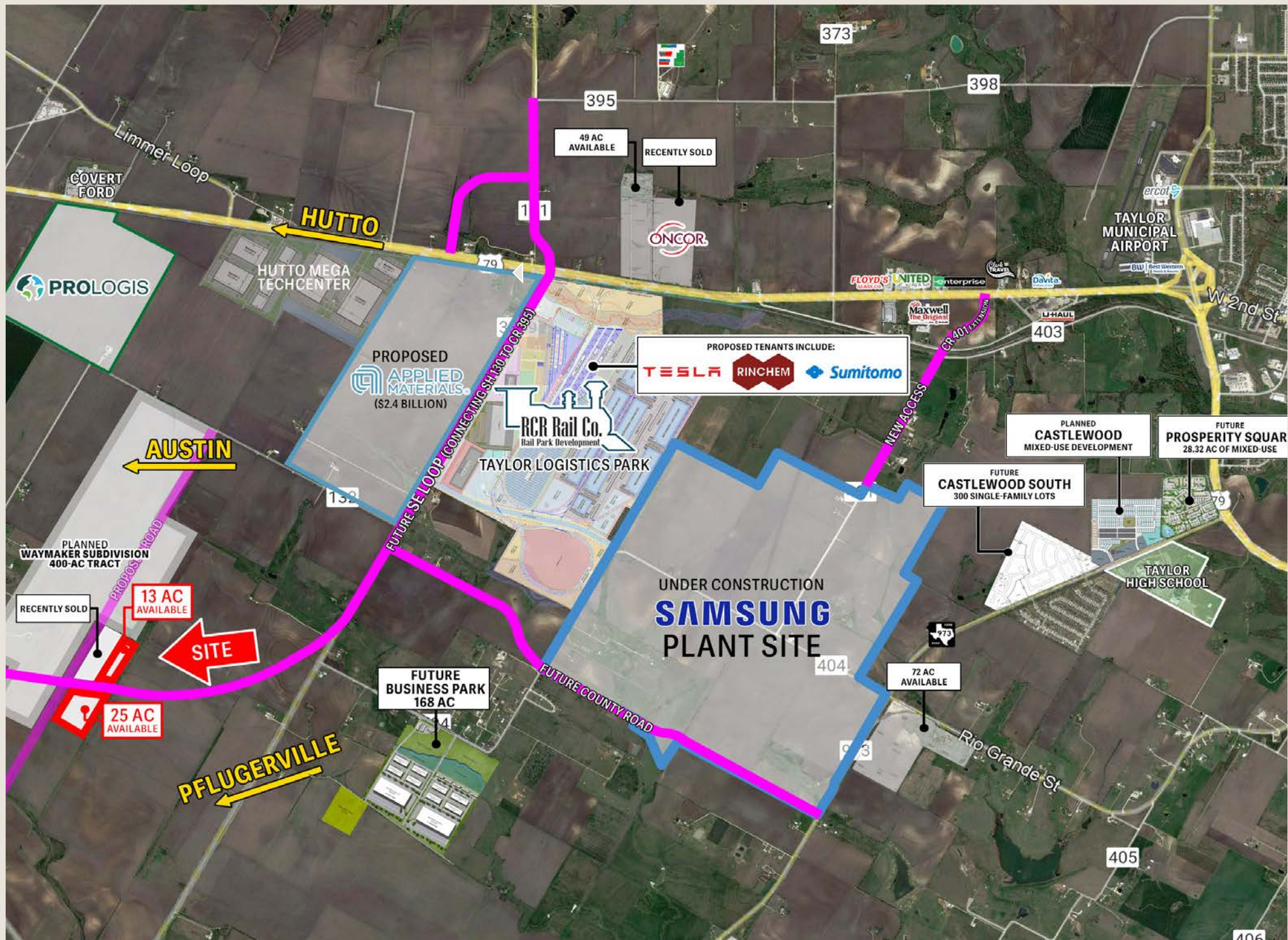
Year: 2022 | Esri

DISCLAIMER

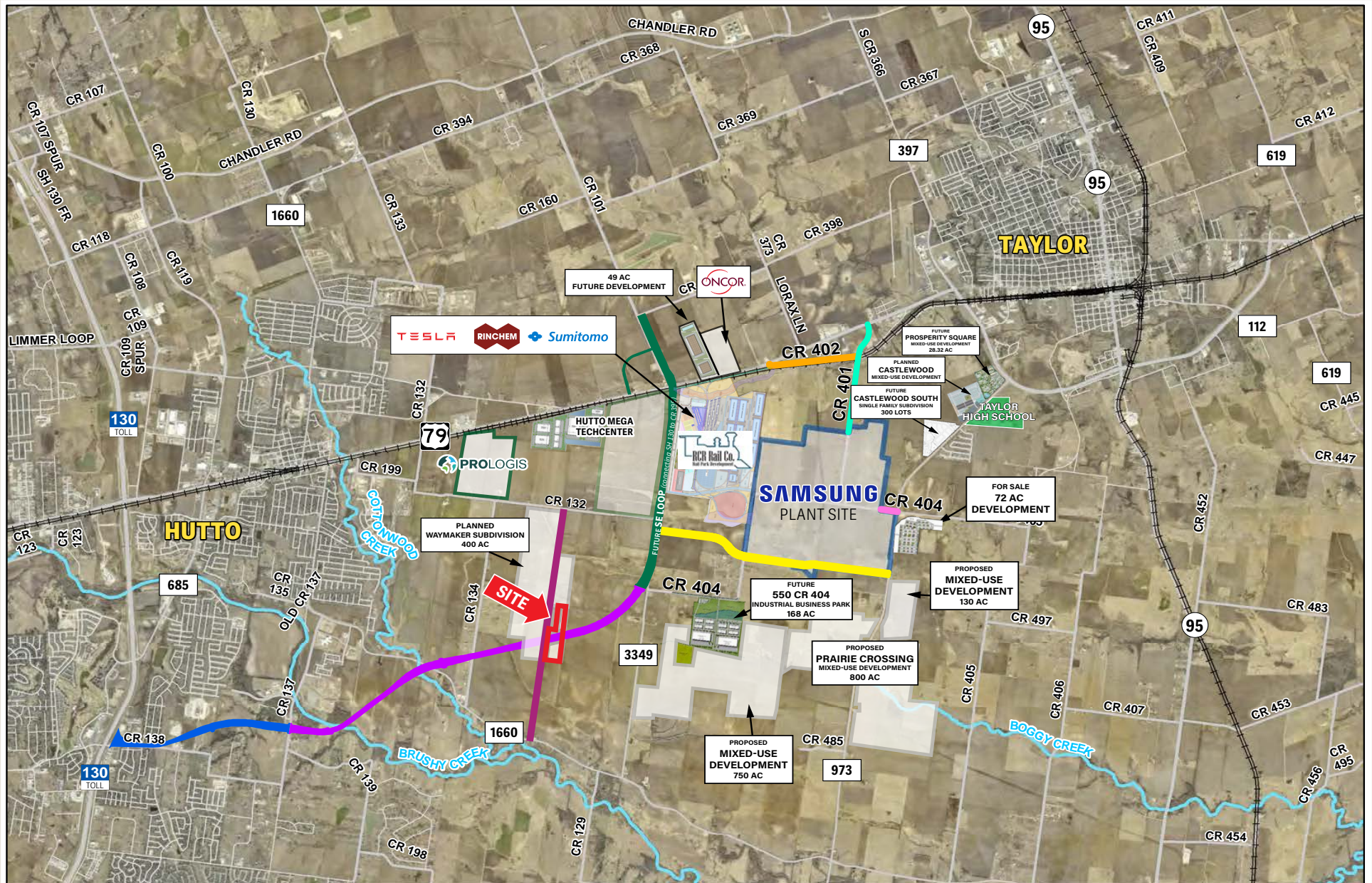
© 2017 Jones Lang LaSalle IP, Inc. All rights reserved. All information contained herein is from sources deemed reliable; however, no representation or warranty is made to the accuracy thereof.



Area Development



WILCO Road Extension Map

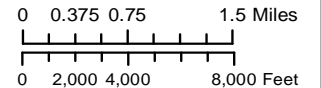


Full Site Operations Access

- Future County Road
- Future Arterial
- CR 401
- CR 404
- CR 402

- SE Loop (SH 130 to CR 395)
(Controlled Access Facility)**
- Segment 1
- Segment 2
- Segment 3

- Samsung Development
- Union Pacific Railroad
- Rivers/Streams



Southeast Loop Timing

WHY IS THE SOUTHEAST LOOP NECESSARY?

Williamson County has experienced tremendous growth, seeing a population increase of 40% between 2010 and 2019, and current population projections show this growth will continue. Current growth requires additional roadway infrastructure to keep pace with the increasing number of residents and vehicles and to better protect the safety, mobility and quality of life for residents.

Additionally, the 17-mile expanse of US-79 from Round Rock to Taylor has been reported to be the most coveted stretch of highway in the country from an economic standpoint. The County claims that the US-79 corridor in particular is desirable because of access to transportation, including I-35 and the State Highway 130 toll road as well as a Union Pacific Corp.-owned rail line that runs parallel to 79. Connectivity and space is what the US-79 corridor has to offer and is what attracts major corporations to the likes of Samsung among others to the area, encouraging further development.

**Excerpts taken from [WILCO](#) and the [Austin Business Journal](#)



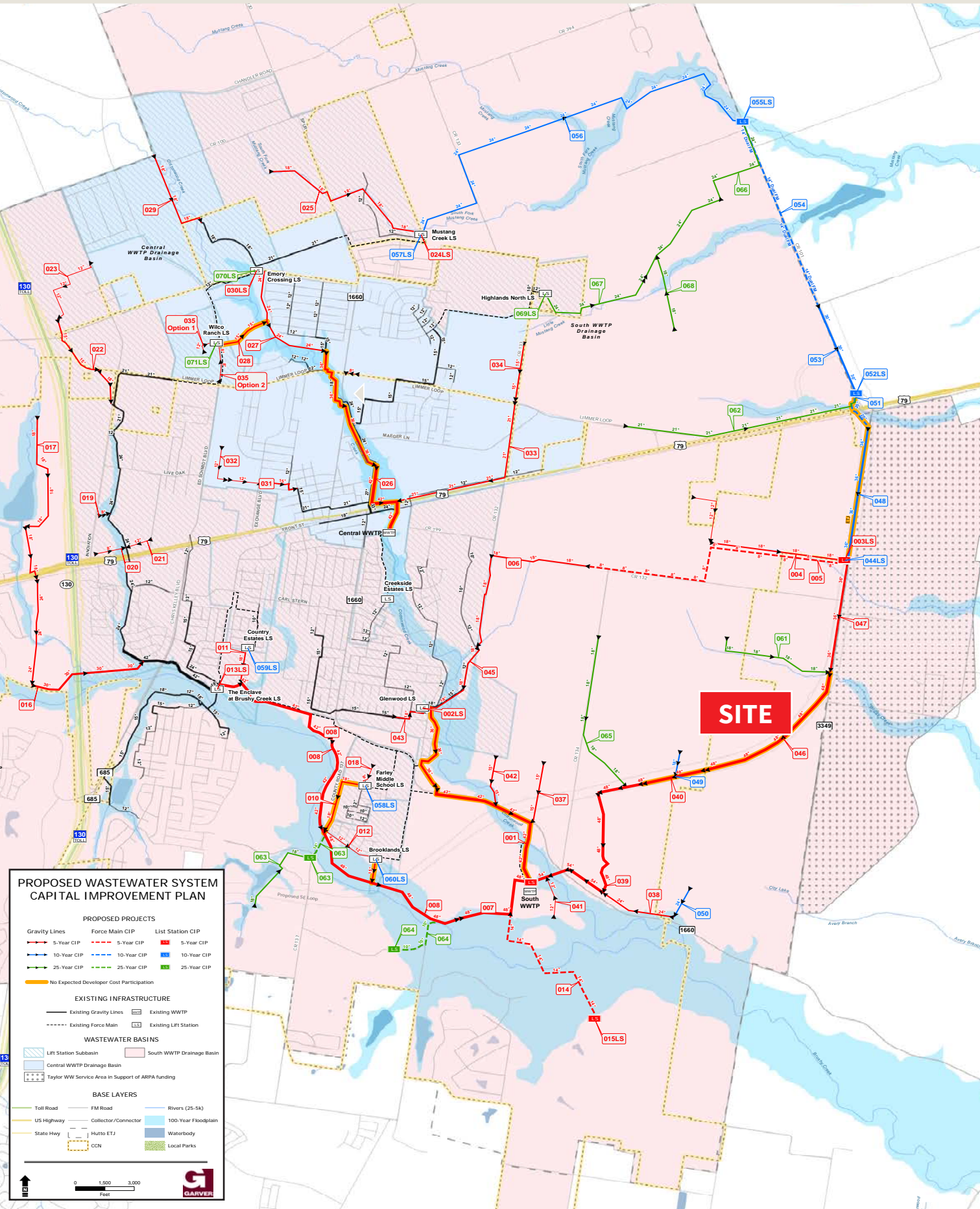
This aerial map illustrates a proposed highway interchange and exit 1660. The map features several key elements:

- Frontage Rd 1 MILE**: Located at the top left, with a black arrow pointing to the road.
- County Rd 404 1/4 MILE**: Located at the bottom left, with a black arrow pointing to the road.
- 1660 Hutto Elgin 1/4 MILE**: Located in the center, with a black arrow pointing to the road.
- 16 AC UNDER CONTRACT**: A large white area in the center, with a black arrow pointing to it.
- 25 AC AVAILABLE**: A large white area at the bottom, with a black arrow pointing to it.
- 13 AC AVAILABLE**: A large white area at the top right, with a black arrow pointing to it.
- EXIT**: Two green signs with arrows pointing to the exit ramp.
- ARTERIAL**: Two yellow labels indicating the road type.

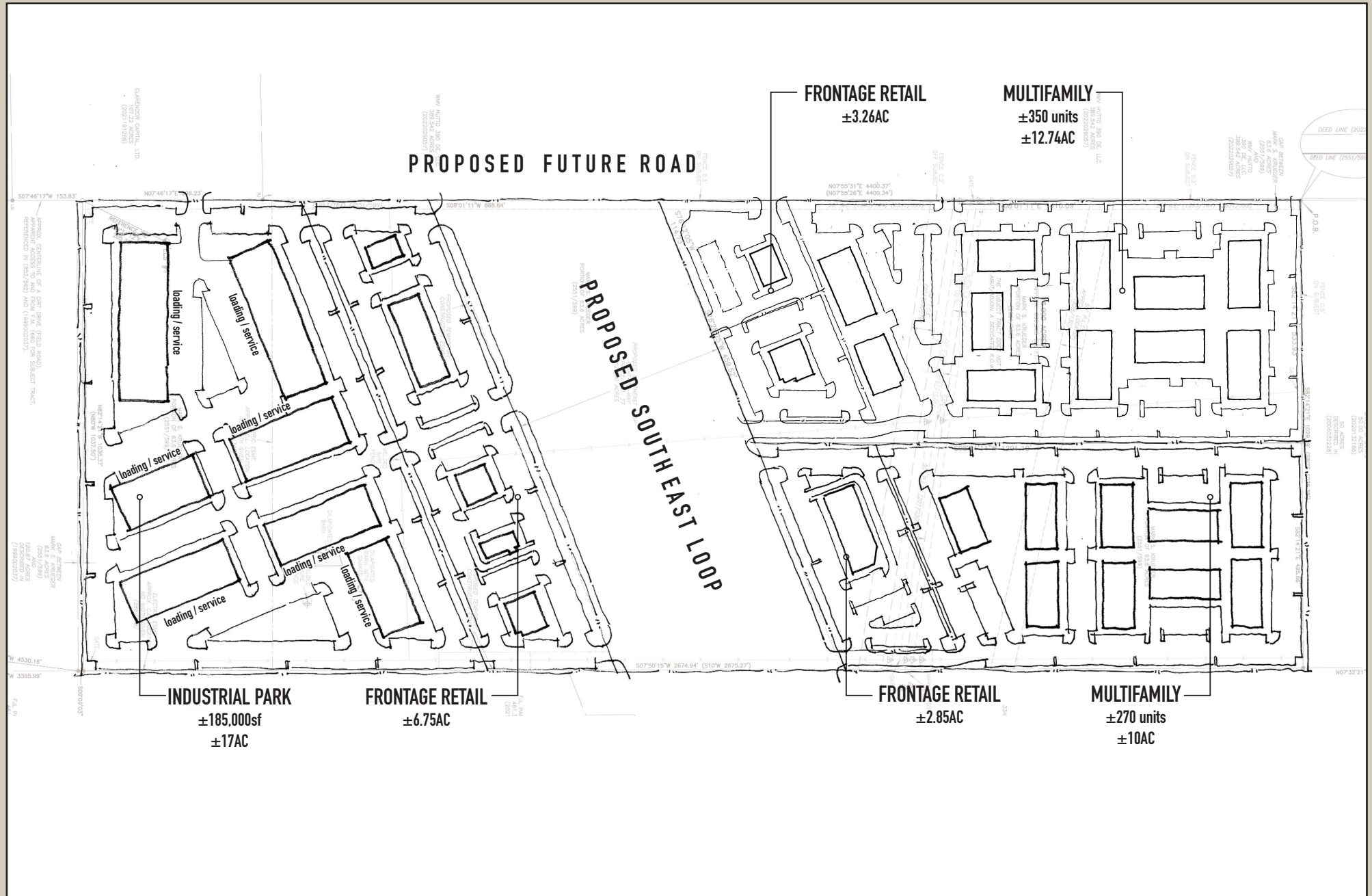
The map also shows various colored overlays (green, yellow, purple, red) representing different land use or ownership zones. The background is an aerial photograph of the area.

NOTE: SITE PLAN RENDERING NOT TO SCALE

City of Hutto Proposed Wastewater System Capital Improvement Plan



Site Plan



NOTE: SITE PLAN RENDERING NOT TO SCALE



Information About Brokerage Services

Texas law requires all real estate license holders to give the following information about brokerage services to prospective buyers, tenants, sellers and landlords.



TYPES OF REAL ESTATE LICENSE HOLDERS:

- **A BROKER** is responsible for all brokerage activities, including acts performed by sales agents sponsored by the broker.
- **A SALES AGENT** must be sponsored by a broker and works with clients on behalf of the broker.

A BROKER'S MINIMUM DUTIES REQUIRED BY LAW (A client is the person or party that the broker represents):

- Put the interests of the client above all others, including the broker's own interests;
- Inform the client of any material information about the property or transaction received by the broker;
- Answer the client's questions and present any offer to or counter-offer from the client; and
- Treat all parties to a real estate transaction honestly and fairly.

A LICENSE HOLDER CAN REPRESENT A PARTY IN A REAL ESTATE TRANSACTION:

AS AGENT FOR OWNER (SELLER/LANDLORD): The broker becomes the property owner's agent through an agreement with the owner, usually in a written listing to sell or property management agreement. An owner's agent must perform the broker's minimum duties above and must inform the owner of any material information about the property or transaction known by the agent, including information disclosed to the agent or subagent by the buyer or buyer's agent.

AS AGENT FOR BUYER/TENANT: The broker becomes the buyer/tenant's agent by agreeing to represent the buyer, usually through a written representation agreement. A buyer's agent must perform the broker's minimum duties above and must inform the buyer of any material information about the property or transaction known by the agent, including information disclosed to the agent by the seller or seller's agent.

AS AGENT FOR BOTH - INTERMEDIARY: To act as an intermediary between the parties the broker must first obtain the written agreement of *each party* to the transaction. The written agreement must state who will pay the broker and, in conspicuous bold or underlined print, set forth the broker's obligations as an intermediary. A broker who acts as an intermediary:

- Must treat all parties to the transaction impartially and fairly;
- May, with the parties' written consent, appoint a different license holder associated with the broker to each party (owner and buyer) to communicate with, provide opinions and advice to, and carry out the instructions of each party to the transaction.
- Must not, unless specifically authorized in writing to do so by the party, disclose:
 - that the owner will accept a price less than the written asking price;
 - that the buyer/tenant will pay a price greater than the price submitted in a written offer; and
 - any confidential information or any other information that a party specifically instructs the broker in writing not to disclose, unless required to do so by law.

AS SUBAGENT: A license holder acts as a subagent when aiding a buyer in a transaction without an agreement to represent the buyer. A subagent can assist the buyer but does not represent the buyer and must place the interests of the owner first.

TO AVOID DISPUTES, ALL AGREEMENTS BETWEEN YOU AND A BROKER SHOULD BE IN WRITING AND CLEARLY ESTABLISH:

- The broker's duties and responsibilities to you, and your obligations under the representation agreement.
- Who will pay the broker for services provided to you, when payment will be made and how the payment will be calculated.

LICENSE HOLDER CONTACT INFORMATION: This notice is being provided for information purposes. It does not create an obligation for you to use the broker's services. Please acknowledge receipt of this notice below and retain a copy for your records.

Jones Lang LaSalle Brokerage, Inc.	591725	Jan.Lighty@jll.com	(214) 438-6100
Licensed Broker /Broker Firm Name or Primary Assumed Business Name	License No.	Email	Phone
Bradley Stone Selner	399206	Brad.Selner@jll.com	(214) 438-6169
Designated Broker of Firm	License No.	Email	Phone
N/A	N/A	N/A	N/A
Licensed Supervisor of Sales Agent/ Associate	License No.	Email	Phone
Graham Schmergel	672378	Graham.Schmergel@jll.com	(512) 861-3423
Sales Agent/Associate's Name	License No.	Email	Phone

Buyer/Tenant/Seller/Landlord Initials

Date