



Full Building Identity

465 TEHAMA STREET
2 Story Building | 8,000 RSF

FOR MORE INFORMATION CONTACT:

Jean Ko
+1 415 810 1914
jean.ko@jll.com
RE Lic. #: 01184706



465 Tehama

8,000 RSF



Newly built out from shell in 2019



High quality sandblasted concrete and wood finishes throughout



New Seismic upgrade



Full HVAC



Sprinklers



Skylights



Full Kitchen

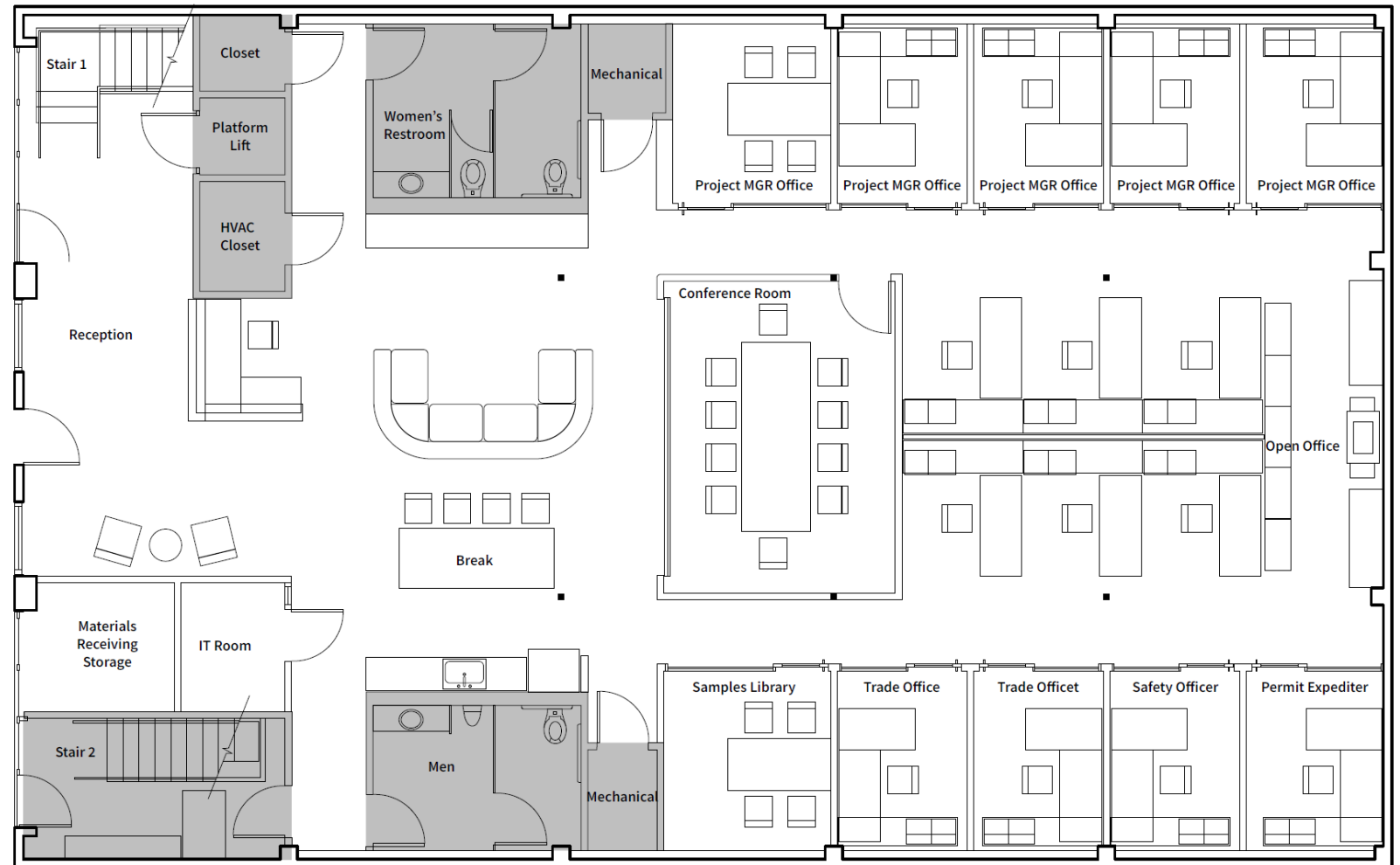


20 Private offices/ meeting rooms in place



Lease Term 2 – 5 years

1st Floor



465 Tehama

8,000 RSF



Newly built out from shell in 2019



High quality sandblasted concrete and wood finishes throughout



New Seismic upgrade



Full HVAC



Sprinklers



Skylights



Full Kitchen

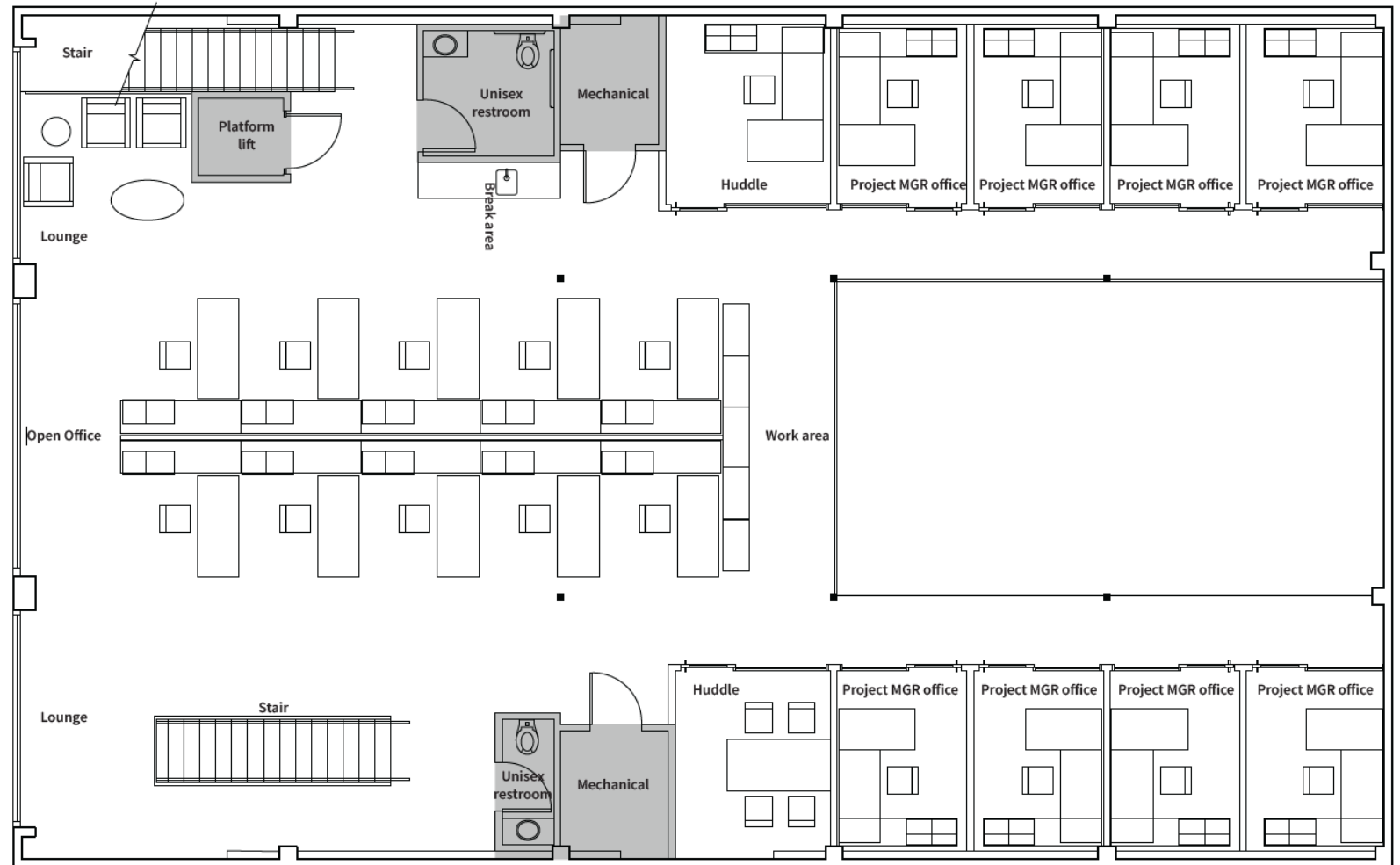


20 Private offices/ meeting rooms in place



Lease Term 2 – 5 years

2nd Floor



465 Tehama **Space** Photos



465 Tehama **Space** Photos

