

JONES LANG LASALLE BROKERAGE INC

# 2101

EAST LAKE MARY BOULEVARD

---

SANFORD, SEMINOLE COUNTY, FL 32773

FOR SALE

Please call for pricing

BOBBY ISOLA, SIOR, CCIM

Executive Managing Director

[bobby.isola@jll.com](mailto:bobby.isola@jll.com)

+1 407 930 1804

JOSH LIPOFF

Managing Director

[j.lipoff@jll.com](mailto:j.lipoff@jll.com)

+1 407 982 8633





2101 East Lake Mary Boulevard, located in Sanford, Florida, is an impressive 116,340 square foot multi-faceted manufacturing and distribution facility. The building's attractive features include heavy power, cross dock loading design, 11,398 square feet of office space, high ceilings, extensive employee parking spaces, trailer parking and outdoor storage. It is truly the Swiss army knife of industrial buildings within the Central Florida industrial submarket as it has the ability to accommodate a large variety of manufacturing and distribution businesses.

The property is well located at a signalized intersection with 825'± of frontage along Lake Mary Boulevard, providing unparalleled exposure. It offers convenient access to the Central Florida Greenway (State Road 417) just one mile away and is only minutes to the growing Orlando-Sanford International Airport.

***Highly specialized  
manufacturing  
facility located in  
the booming Central  
Florida industrial  
market.***





## Property DETAILS



**116,340± SF**  
building



**11,398± SF**  
office



**20' - 21'**  
clear height



**29 - 8' x 9'**  
dock doors



**2 - 12' x 13'**  
grade doors



**40' x 40'**  
column spacing



**2500 amps**  
**480/277 volt**  
power



**100%**  
air-conditioned



**1984-1989-2004**  
year built



**10.09**  
acres



**MI-2**  
zoning



**825'**  
road frontage



**315±**  
auto parking



**10±**  
off-dock  
trailer parking



**22,000**  
AADT

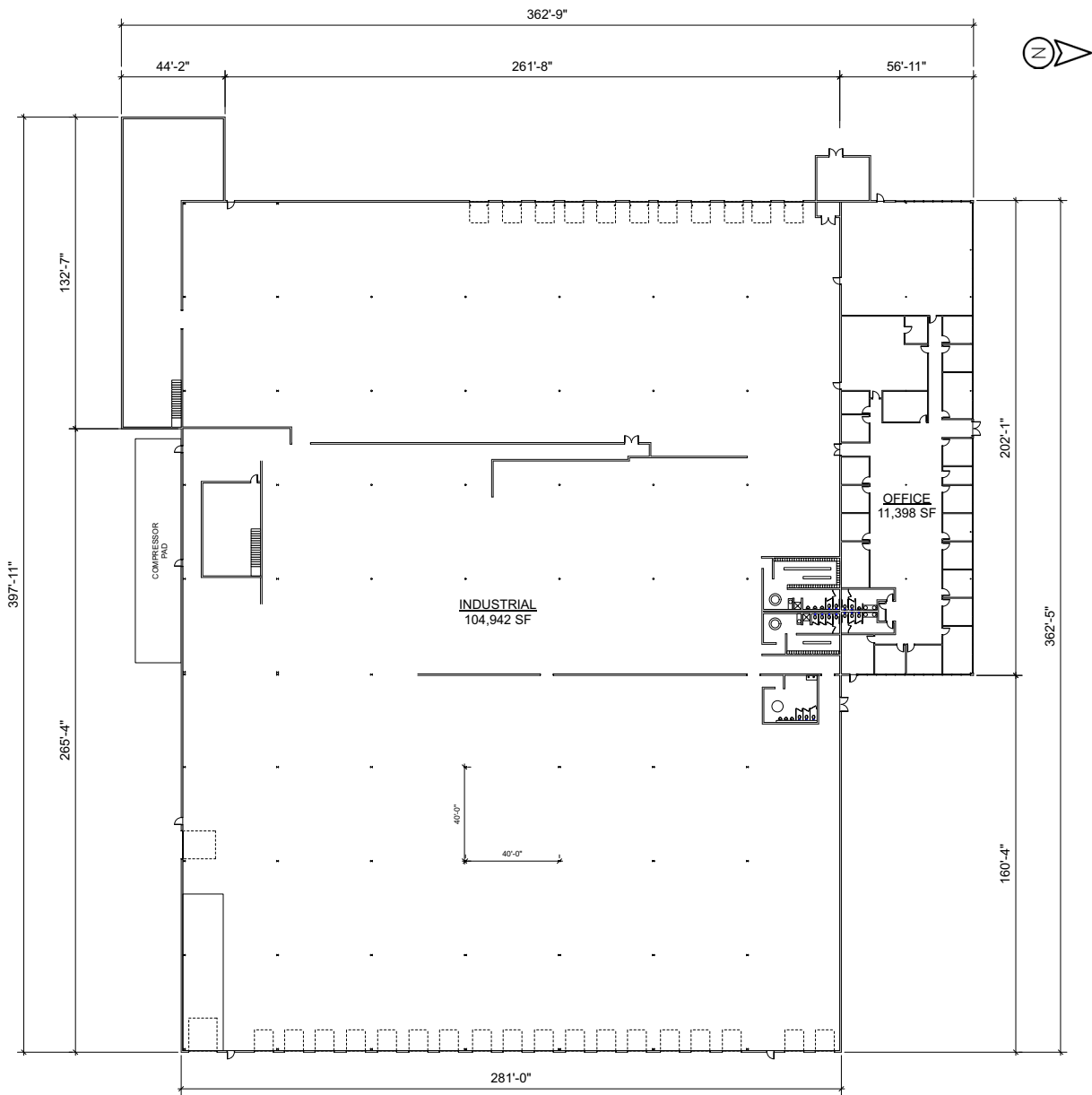
All measurements are approximate and should be verified by a prospective user.

# Building FLOOR PLAN

MELLONVILLE AVE



LAKE MARY BLVD





LAKE MARY BLVD  
22,000 AADT

MELLONVILLE AVE

Potential for  
outside storage or  
expansion

100'± truck court

165'± truck court



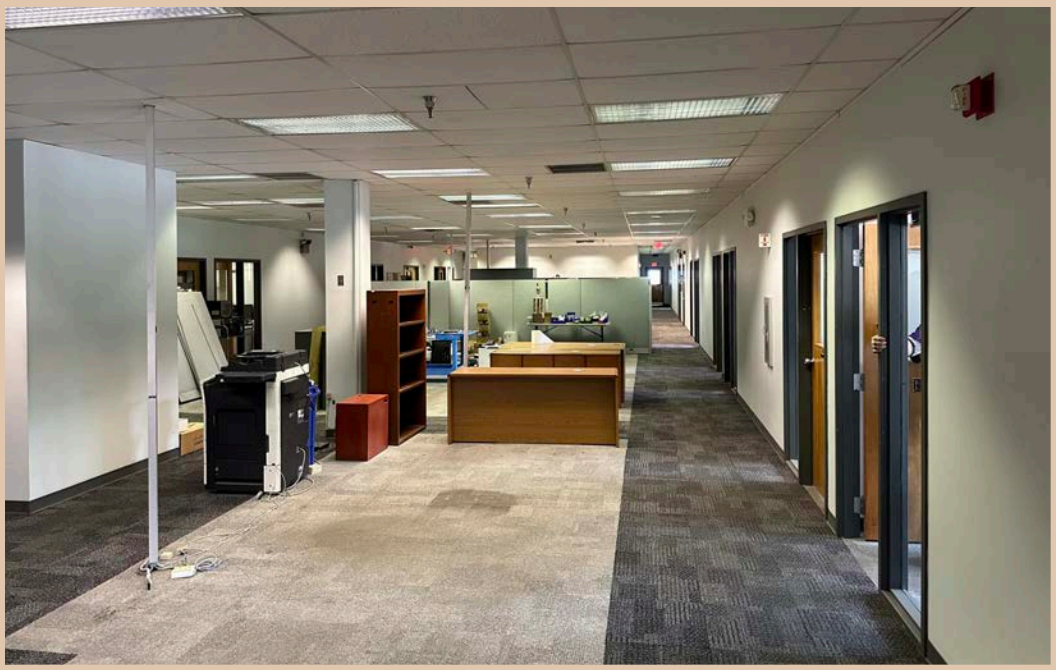




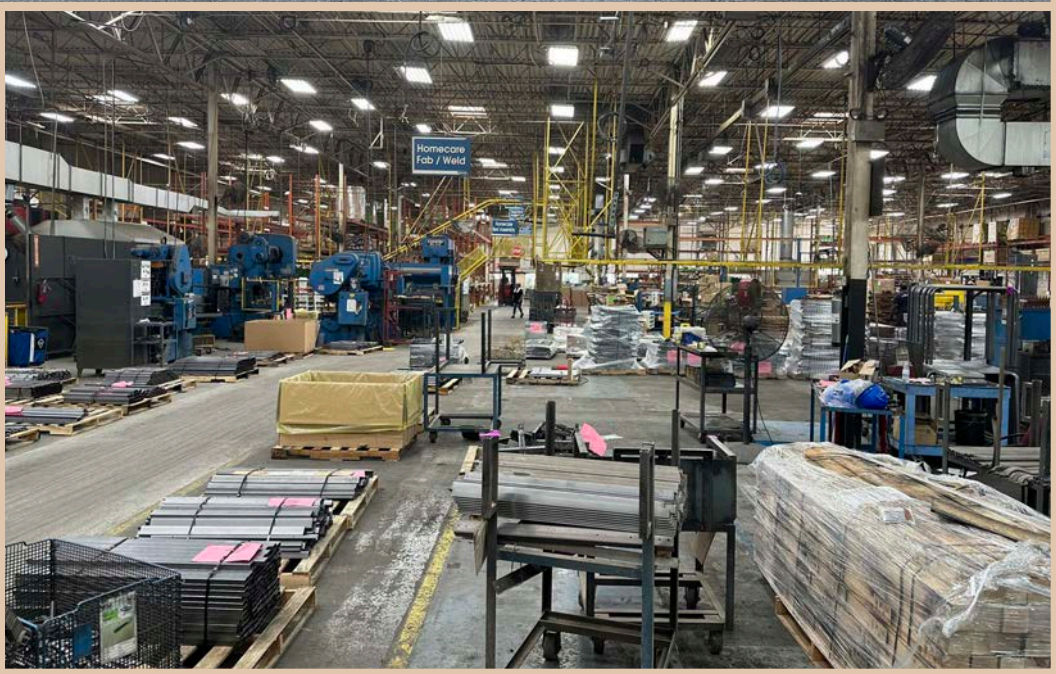
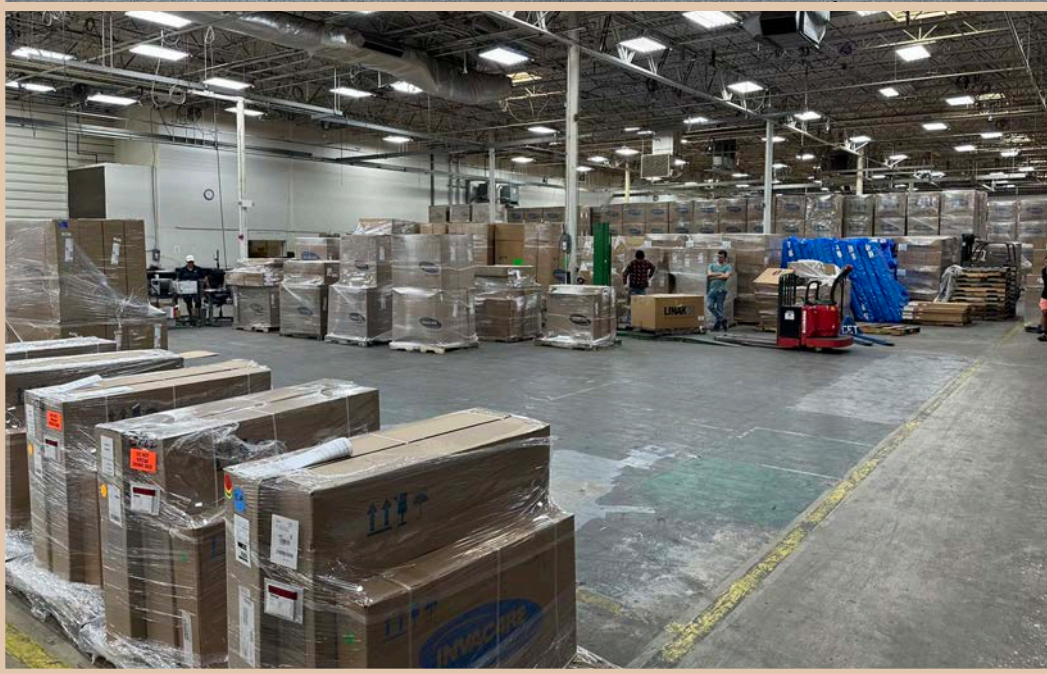
MAP KEY

- |   |                                |
|---|--------------------------------|
| 1. Earnest Products   | 13. Consolidated Label Co      |
| 2. Southeast Stone  | 14. Orlando's Forklift Service |
| 3. The Compak Companies                                       | 15. Circle K                   |
| 4. Woodcraft Design   | 16. 7-Eleven                   |
| 5. Wrap This  | 17. Silver Moon Creations      |
| 6. JRT Manufacturing  | 18. Walmark of Florida         |
| 7. TRP Construction Group                                     | 19. KEMCO Industries           |
| 8. Ryder Truck Maintenance Shop                               | 20. Waste Connections          |
| 9. RE Michel Company, Loxgreen Metal Source                   | 21. Mazworx Manufacturing      |
| 10. American Bronze Foundry                                   | 22. Blue Ox Enterprises        |
| 11. Seminole County Records Center                            | 23. The Father's Table         |
| 12. Artisan Industries, ACF Environmental, Alacirant Holdings |                                |







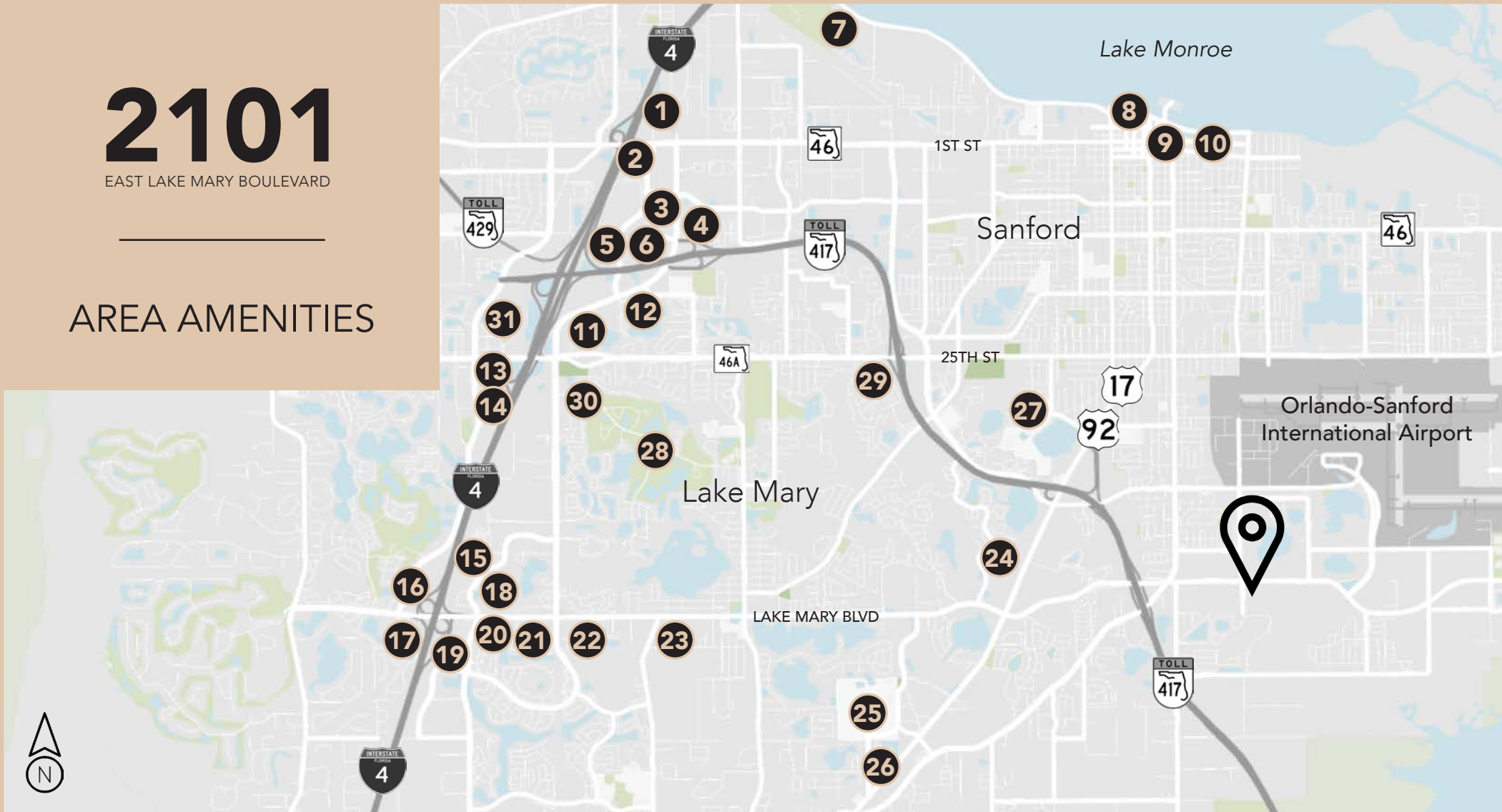




# 2101

EAST LAKE MARY BOULEVARD

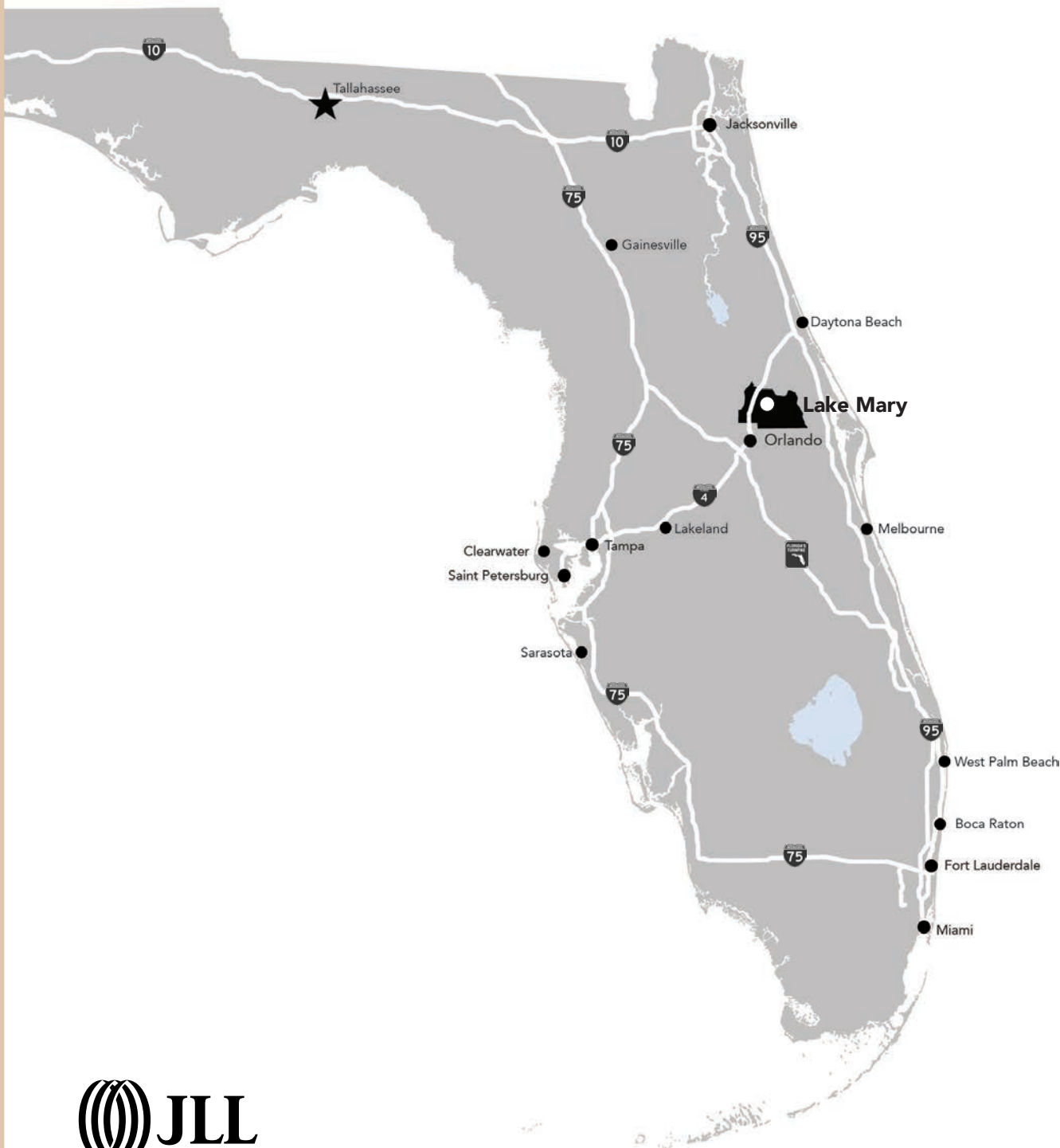
## AREA AMENITIES



### MAP KEY

- |  |                               |                               |                            |
|--|-------------------------------|-------------------------------|----------------------------|
| 1. Cracker Barrel                            | 8. Sanford Riverwalk          | 16. Courtyard by Marriott     | 24. Lowe's                 |
| 2. Texas Roadhouse                           | 9. Historic Downtown Sanford  | 17. Hyatt Lake Mary           | 25. Seminole State College |
| 3. Cheddar's Scratch Kitchen / Bahama Breeze | 10. Fort Mellon Park          | 18. The Home Depot            | 26. Publix                 |
| 4. Walmart Supercenter                       | 11. Sam's Club                | 19. Top Golf                  | 27. Seminole High School   |
| 5. Seminole Towne Center                     | 12. Kohl's                    | 20. Academy Sports + Outdoors | 28. Timacuan Golf Club     |
| 6. Target                                    | 13. Marriott Lake Mary        | 21. Publix / Target           | 29. Walmart                |
| 7. Central Florida Zoo                       | 14. Residence Inn by Marriott | 22. TJ Maxx                   | 30. Publix                 |
|  | 15. Hilton Garden Inn         | 23. Planet Fitness            | 31. Publix                 |





## Market OVERVIEW:

### 2023 Demographics

	30 min	60 min	120 min
Total Population	1,271,387	3,414,060	8,018,567
Total Households	493,439	1,307,293	3,158,425
Average Household Income	\$100,279	\$95,504	\$93,377
Total Businesses	61,267	147,382	317,915
Total Employees	621,438	1,516,767	3,287,514

### Drive time and distances

	Location	Time	Distance
	Interstate 4	9 min	7 miles
	Interstate 95	35 min	38 miles
	State Road 417	4 min	1.3 miles
	State Road 429	20 min	11 miles
	Orlando-Sanford Int'l Airport	5 min	2.3 miles
	Orlando Int'l Airport	33 min	32 miles
	Port Canaveral	1 hour	66 miles
	Orlando	26 min	25 miles
	Tampa	1.75 hours	110 miles
	Jacksonville	2 hours	130 miles
	Miami	4 hours	246 miles
	Atlanta, GA	75 hours	462 miles



JONES LANG LASALLE BROKERAGE INC

# 2101

EAST LAKE MARY BOULEVARD

---

FOR MORE INFORMATION, PLEASE CONTACT

BOBBY ISOLA, SIOR, CCIM

Executive Managing Director

[bobby.isola@jll.com](mailto:bobby.isola@jll.com)

+1 407 930 1804

JOSH LIPOFF

Managing Director

[j.lipoff@jll.com](mailto:j.lipoff@jll.com)

+1 407 982 8633



Although information has been obtained from sources deemed reliable, JLL does not make any guarantees, warranties or representations, express or implied, as to the completeness or accuracy as to the information contained herein. Any projections, opinions, assumptions or estimates used are for example only. There may be differences between projected and actual results, and those differences may be material. JLL does not accept any liability for any loss or damage suffered by any party resulting from reliance on this information. If the recipient of this information has signed a confidentiality agreement with JLL regarding this matter, this information is subject to the terms of that agreement. ©2023. Jones Lang LaSalle IP, Inc. All rights reserved.

Jones Lang LaSalle Brokerage, Inc., a licensed real estate broker across the US | 250 South Orange Avenue, Suite 700P, Orlando, FL 32801