

The background of the entire image is a photograph of the Watterson Office Park building. It is a tall, multi-story office building with a grid-like facade of windows. The building is partially obscured by large, leafy green trees in the foreground. A small red logo is visible on the upper left side of the building's facade. The sky is a clear, light blue.

W

WATTERSON
OFFICE PARK

Watterson Office Park is a signature three-building campus conveniently located in suburban Louisville. The park offers several available suite options ranging from 658 square feet to 16,748 square feet.

1930 Bishop Lane
16 floors
16,748 s.f. floorplates

1941 Bishop Lane
10 floors
10,500 s.f. floorplates

1951 Bishop Lane
5 floors
15,520 s.f. floorplates

PREMIUM ACCESS & AMENITIES

- Centralized location provides convenient access to downtown Louisville and surrounding areas
- Minutes to Interstate-264 and Interstate-65
- Prominent visibility from Interstate-264
- Several on-site amenities including a restaurants, sundry shop, tenant lounge / WiFi café and private meeting area

OFFICE PARK HIGHLIGHTS



 **RECENTLY UPDATED**
LOBBIES AND ENTRANCE FINISHES

 **FIBER CONNECTION**
BETWEEN ALL THREE BUILDINGS

 **ABUNDANT
SURFACE
PARKING**

**24-HOUR
SECURITY** 

 **ON-SITE PROPERTY
MANAGEMENT**

 **ON-SITE GENERATORS
FOR TENANT USE**



ON-SITE AMENITIES



**COMMON
CONFERENCE
ROOM**



**COMMON
TRAINING
ROOM**



**SEASONAL
ON-SITE FOOD
TRUCKS**



**TENANT
LOUNGE**



**WIFI /
INTERNET
CAFÉ**



**AHHA
COLLECTIVE
WELLNESS SPA**



**LEE'S
KITCHEN**



1930 BISHOP LANE

AVAILABILITY

Suite 130: 1,282 S.F.

Suite 600: 16,748 S.F.
(Full Floor)

Suite 1005: 2,523 S.F.

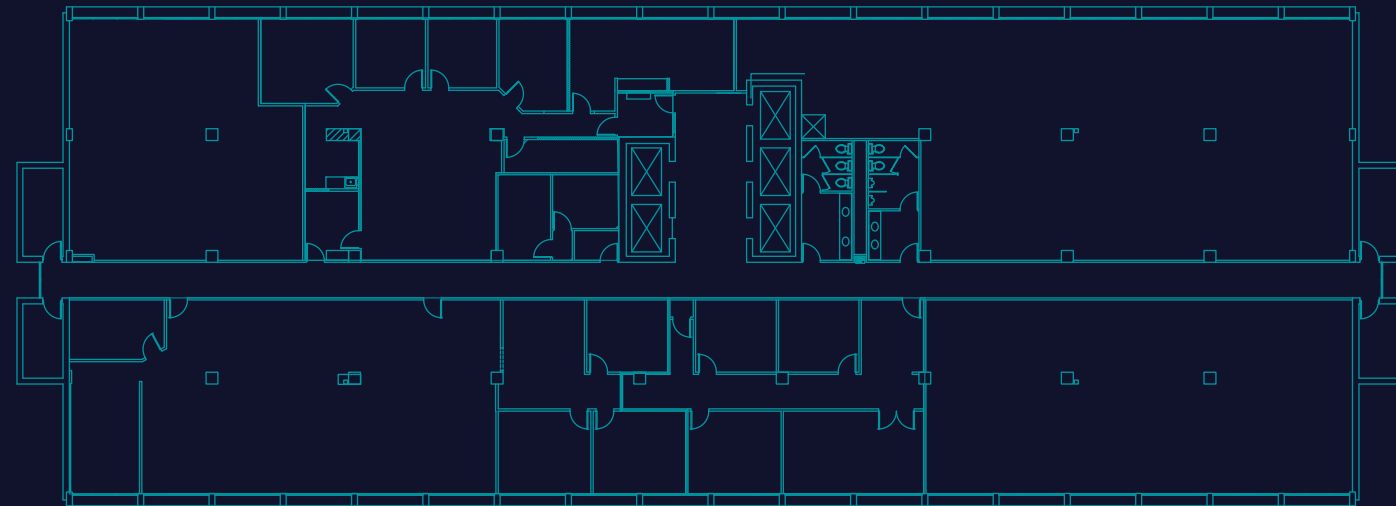
Suite 1017: 3,935 S.F.

Suite 1023: 1,726 S.F.

Suite 1100: 16,748 S.F.
(Full Floor Available March 2024)

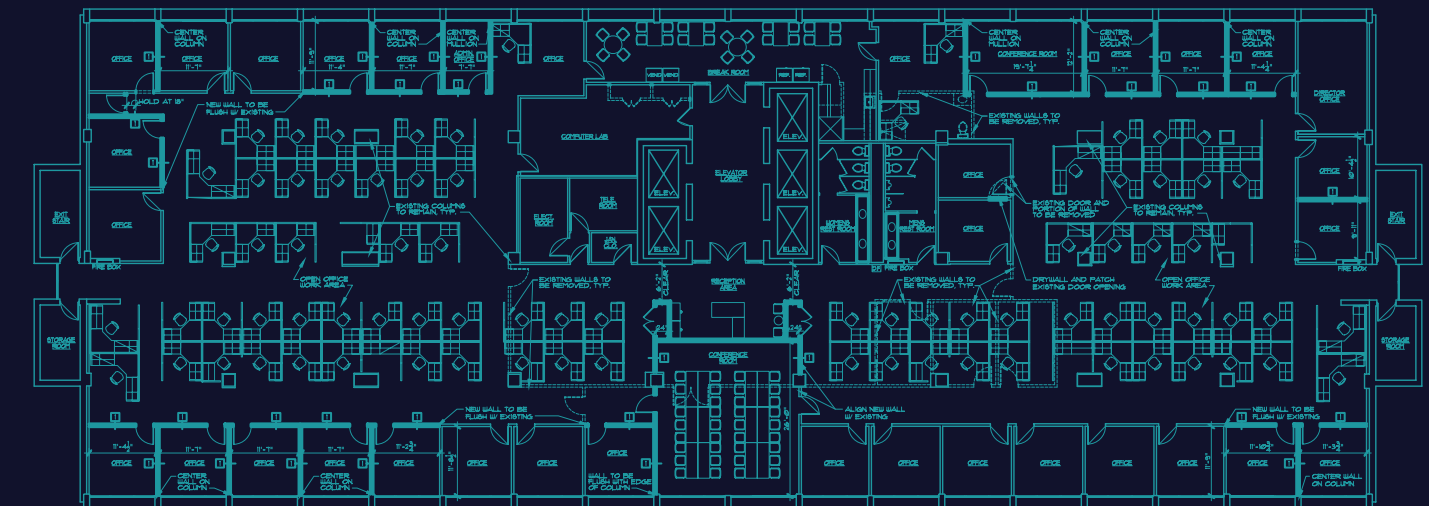


FULL FLOOR AVAILABLE



6th Floor — 16,748 SF

FULL FLOOR AVAILABLE



11th Floor — 16,748 SF

1941
BISHOP
LANE

AVAILABILITY

- Suite 401: 2,753 S.F.
- Suite 405: 1,676 S.F.
- Suite 501: 658 S.F.
- Suite 511: 2,369 S.F.
- Suite 600: 10,504 S.F. (Full Floor)
- Suite 800: 2,298 S.F.
- Suite 802: 542 S.F.
- Suite 804: 2,224 S.F.
- Suite 1004: 2,270 S.F.
- Suite 1017: 1,250 S.F.

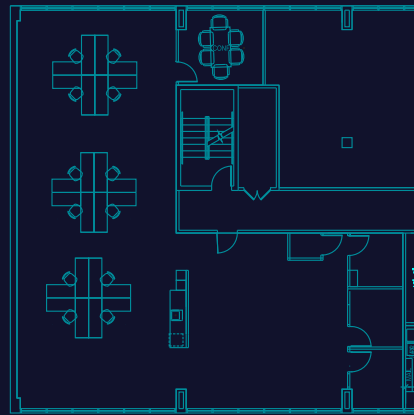


AVAILABILITY

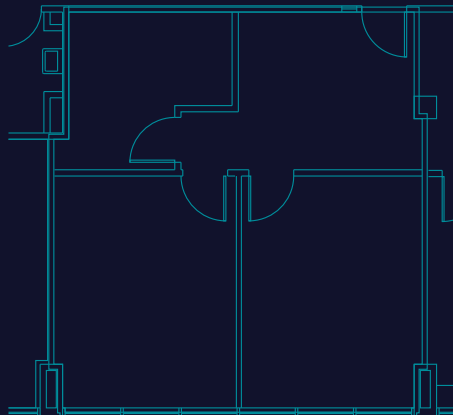
100% Leased

1951
BISHOP
LANE

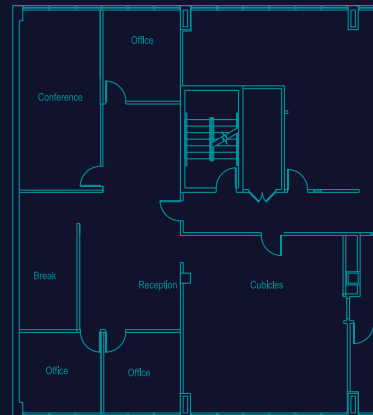
SUITE 401



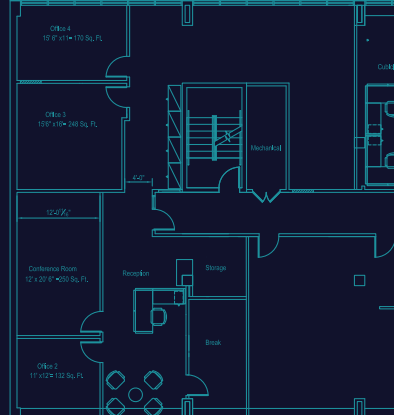
SUITE 501



SUITE 511



SUITE 800



LOCATION

Watterson Office Park is centrally located within Greater Louisville and provides easy access to major interstates, Louisville Muhammad Ali International Airport and downtown.

TRAVEL DISTANCES

- Louisville Muhammad Ali International Airport 3.9 miles
- University of Louisville 5.2 miles
- Downtown Louisville 7.9 miles



LOUISVILLE



DINING

- | | | | |
|---------------------------|------------------------|---------------|---------------------------------|
| 1 Dunkin' Donuts | 5 Winston's Restaurant | 8 El Nopal | 13 Chick-fil-A |
| 2 Subway | 6 The Bakery | 9 Rally's | 14 Mi Sueno Restaurant |
| 3 Yummy Pollo | Heine Brother's Coffee | 10 McDonald's | El Caporal |
| Oriental Star | 7 LIFEbar | 11 KFC | 15 Starbucks |
| Mi Pueblo Mexican Cuisine | | 12 Costco | 16 Penn Station East Coast Subs |
| 4 Waffle House | | | 17 Heitzman Bakery |
| | | | 18 Popeyes Louisiana Kitchen |
| | | | 19 DQ Grill & Chill |



NEARBY AMENITIES



WATTERSON OFFICE PARK

For leasing information contact:

Yandell Wood, SIOR
+1 502 394 2518
yandell.wood@jll.com

Doug Owen, SIOR
+1 502 394 2516
doug.owen@jll.com

Although information has been obtained from sources deemed reliable, JLL does not make any guarantees, warranties or representations, express or implied, as to the completeness or accuracy as to the information contained herein. Any projections, opinions, assumptions or estimates used are for example only. There may be differences between projected and actual results, and those differences may be material. JLL does not accept any liability for any loss or damage suffered by any party resulting from reliance on this information. If the recipient of this information has signed a confidentiality agreement with JLL regarding this matter, this information is subject to the terms of that agreement.
©2022, Jones Lang LaSalle IP, Inc. All rights reserved.

