

For Sublease

1101-1109 Westwood Avenue, Addison IL



Building Specifications

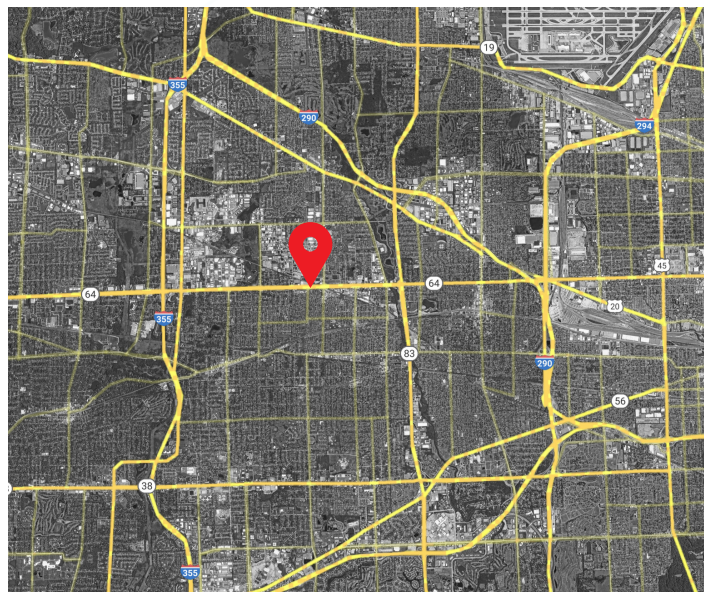
Location	DuPage County
Size	112,000 SF on 4.2 Acres
Clear height	18' - 20'
Power	400-1,200a/240-480v Heavy
Parking	0.53/1,000 SF
Year built	1990

Available space: 1109 Westwood Avenue

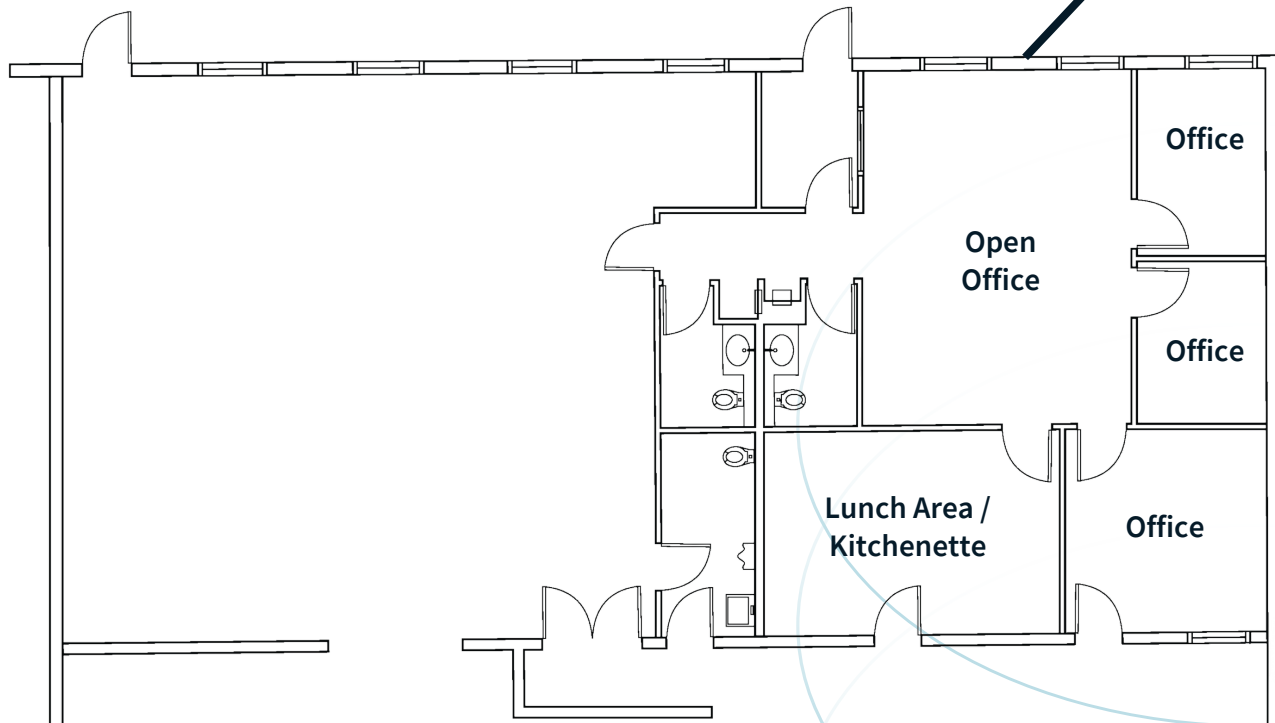
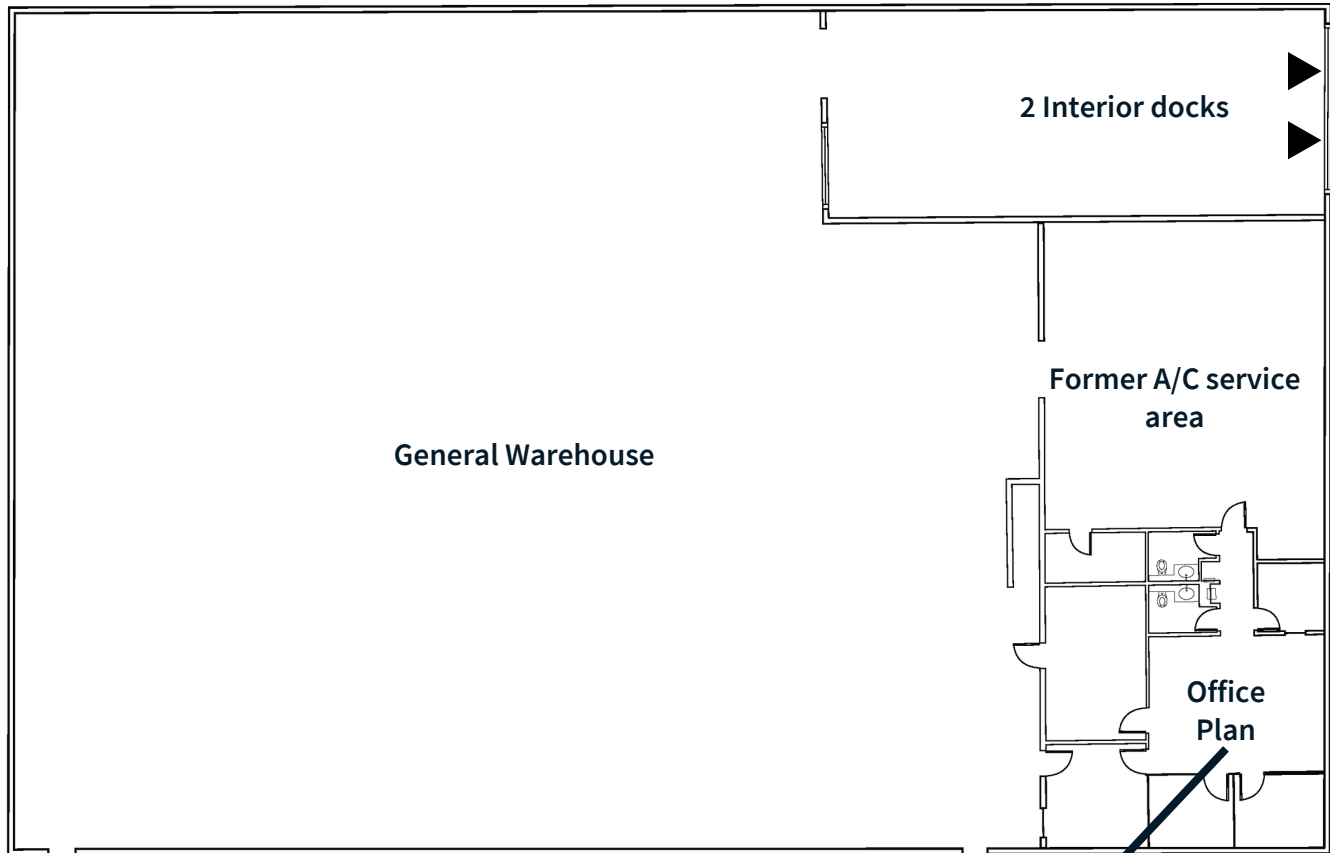
Size	16,000 SF
Office	10%
Docks	2 interior
Parking	7-8 dedicated spaces

Advantages & amenities

- Convenient access to I-355/North Ave.
- Well maintained office and warehouse
- Office includes:
 - 3 private offices
 - Lunch area + kitchenette
 - 3 restrooms
- **Sublease available through January 31, 2026**



Floorplan





JLL

Michael Connor
Vice President
Chicago, IL

michael.connor@jll.com
847.436.6662