



**Full  
floor  
available**

**EXCELLENT OFFICE OPPORTUNITY  
NEAR POST DISTRICT WITH EASY  
ACCESS TO I-15 AND DOWNTOWN**



**Resource Management Building**

**510 SOUTH 200 WEST**

**Salt Lake City, Utah**



# Flexible space options with ability to move-in quickly

This professional office building provides a full floor availability that easily demises to the space you need ranging from 1800 SF - 10,694 SF. Ownership provides ability to move quickly with flexible lease terms



10,694 RSF

Available for Lease



\$23-24/SF

Asking Rate



2.84/1,000

Parking Ratio - Surface and covered/reserved stalls available



2004

Year Built



Signage

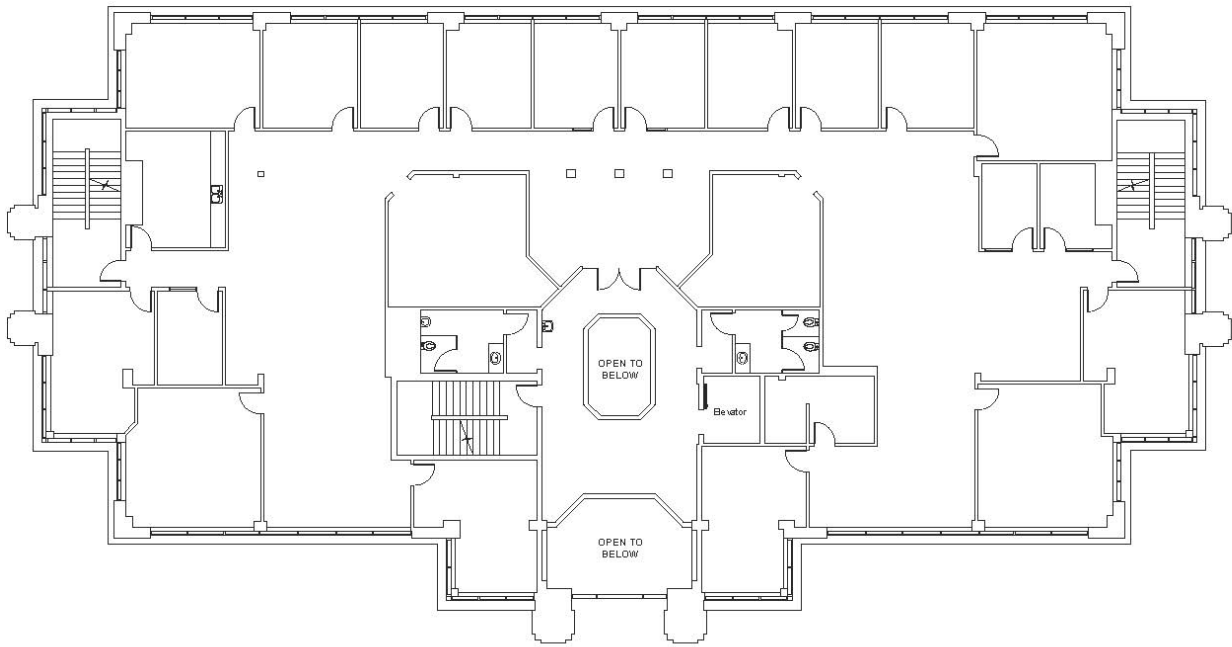
Monument Signage Available



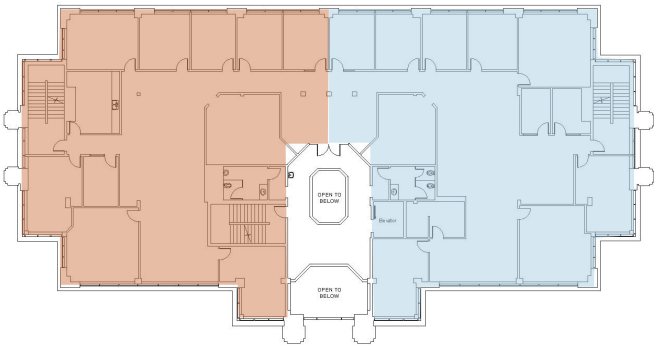
Amenities

Building Common Board Room and Training Room

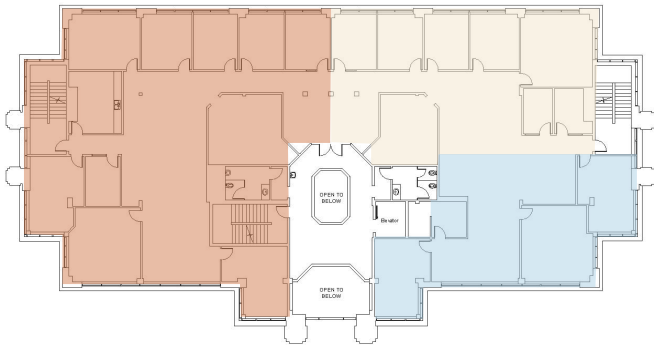
OPTION A



OPTION B



OPTION C



## Convenient Access and New Neighborhood Amenities

Located next door to the Post District, a neighborhood humming with the history, industry, and creativity that moves Salt Lake City. Post District is adding incredible restaurants and retail; open, walkable community spaces; and beautiful, sustainable apartments to Downtown Salt Lake.



# Amenities



Restaurants and Bars



Hotels



FrontRunner



UTA TRAX Blue Line



UTA TRAX Green Line



UTA TRAX Red Line





Convenient Access  
on and off I-15

POST  
DISTRICT

Resource Management Building  
510 SOUTH 200 WEST

200 WEST

500 SOUTH

## Contact

AMANDA LAWSON  
+1 385 419 3191  
amanda.lawson@jll.com

JAMI MARSH  
+1 801 456 9514  
jami.marsh@jll.com



Although information has been obtained from sources deemed reliable, neither Owner nor JLL makes any guarantees, warranties or representations, express or implied, as to the completeness or accuracy as to the information contained herein. Any projections, opinions, assumptions or estimates used are for example only. There may be differences between projected and actual results, and those differences may be material. The Property may be withdrawn without notice. Neither Owner nor JLL accepts any liability for any loss or damage suffered by any party resulting from reliance on this information. If the recipient of this information has signed a confidentiality agreement regarding this matter, this information is subject to the terms of that agreement. ©2023. Jones Lang LaSalle IP, Inc. All rights reserved.