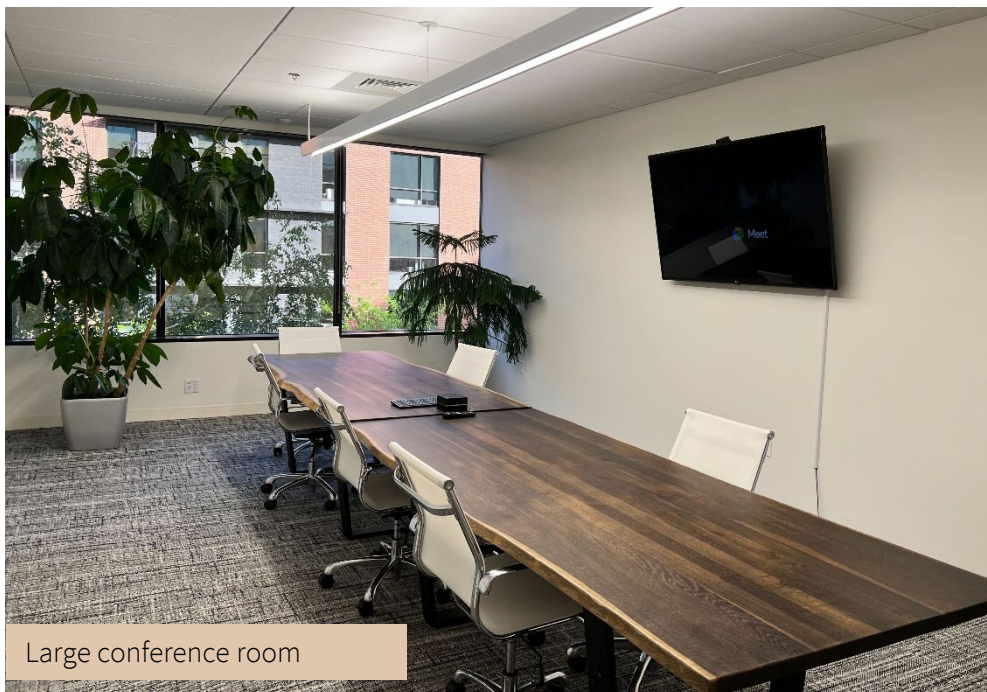


For Sublease



One Capital Center

999 W Main Street
Boise, ID 83702



- 3rd Floor | 8,500 - 17,154 RSF
- Opportunity to sublease a full floor
- Space available within 30 days
- \$24.00/SF FSG

Jones Lang LaSalle Brokerage, Inc.

Suite Amenities



Opportunity to sublease a full floor



Move-in ready with some furniture available



Contemporary design surrounded by green spaces with outdoor seating



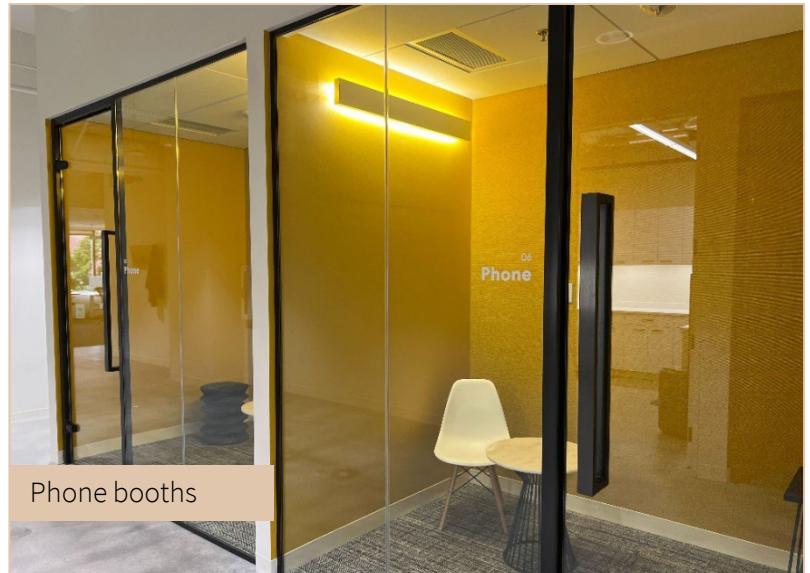
High end finishes throughout



Break room



Medium conference room



Phone booths

Building Amenities



Amenities include showers, locker rooms, and conference facilities



New lobby and restrooms in building and state-of-the-art fire life safety, elevators and HVAC



Great location in the heart of Boise, only 5 blocks from the capital and 1 block from Boise Center



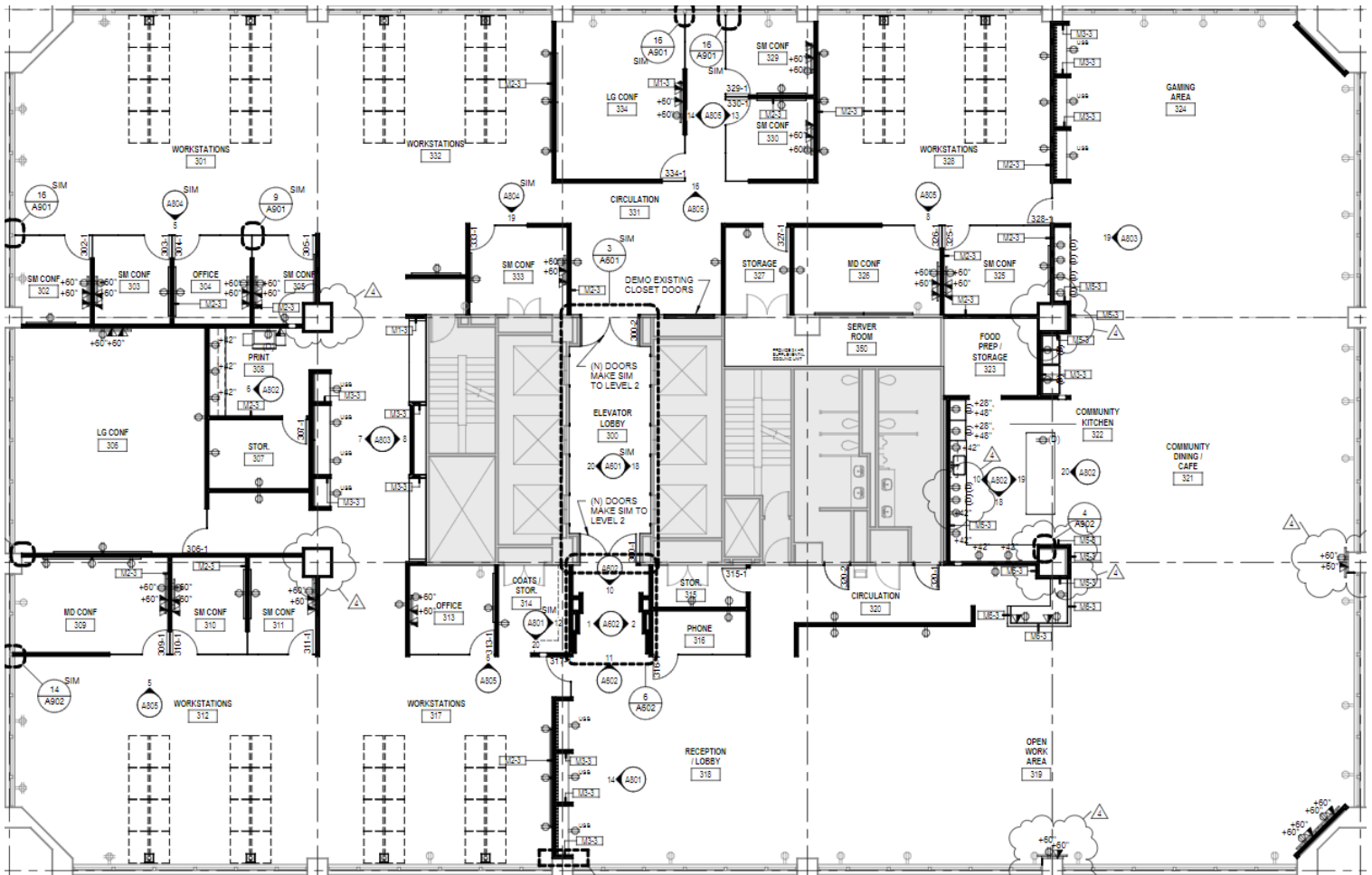
Property Manager located on-site



Bullpen area

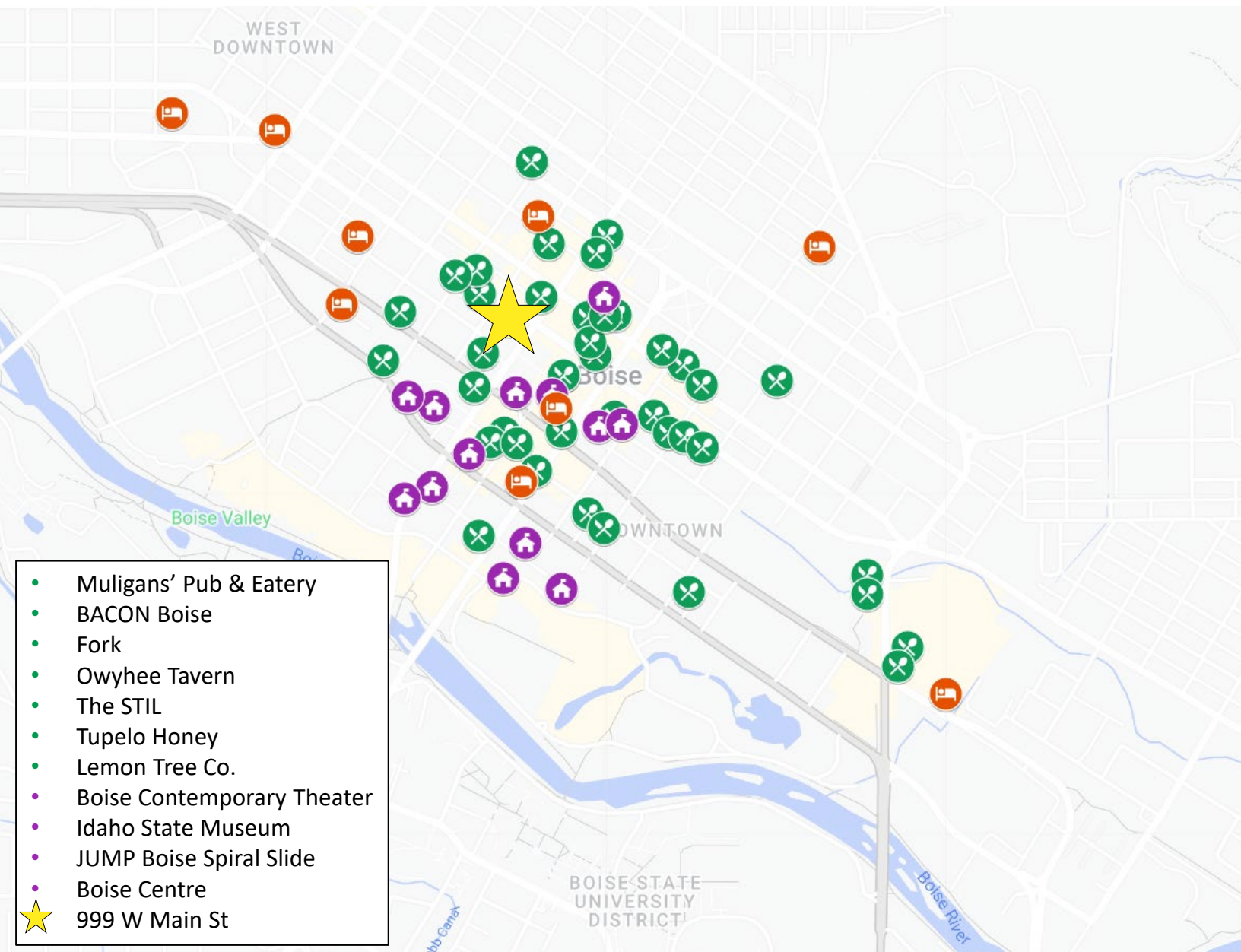
Full floor opportunity

8,500 - 17,154 RSF



Nearby Amenities

Downtown Boise



FOR LEASING INFORMATION:

Brandon Rawlins

Licensed in ID

+1 208 982 2427

Brandon.Rawlins@jll.com

Gavin Williams

Licensed in ID

+1 208 389 7713

Gavin.Williams@jll.com



Jones Lang LaSalle Brokerage, Inc. | 950 W Bannock St, Suite 1100, Boise, ID 83702 | +1 208 982 2427

©2023 Jones Lang LaSalle IP, Inc. All rights reserved. All information contained herein is from sources deemed reliable; however, no representation or warranty is made to the accuracy thereof.