

The background features a dark blue field with a network of thin, light blue lines that curve and intersect. Several solid light blue squares of varying sizes are placed at various points along these lines. Large, solid light blue geometric shapes, including a parallelogram and a trapezoid, are positioned on the left side, partially overlapping the dark blue area.

UC San Diego

CONVERGE

Governor Park

UC San Diego Innovation Hub





WHERE IDEAS CONVERGE

260,000 r.s.f. four building office campus
6333, 6363, 6165 & 6256 Greenwich Dr.

Situated in Governor Park, Converge offers Class A quality office space with efficient, flexible layouts, convenience, excellent visibility and immediate access to Interstate 805. With minimized commute times and close proximity to UTC, Downtown, East County and Highway 56, this location is ideal. On-site amenities include EV charging stations (6256) and showers and changing facilities. A new modern concept cafe is underway at 6165 Greenwich Drive.

GREEN SPOT SALAD

Now Open

CONVERGE Governor Park
UC San Diego Innovation Hub



Offering Salads, Bowls,
Wraps and Flatbreads
Located at 6165 Greenwich

- **Convenient Ordering Options:**
In-store, Online, Delivery
and Catering
- All natural ingredients
- Indoor seating and large outdoor
patio seating available

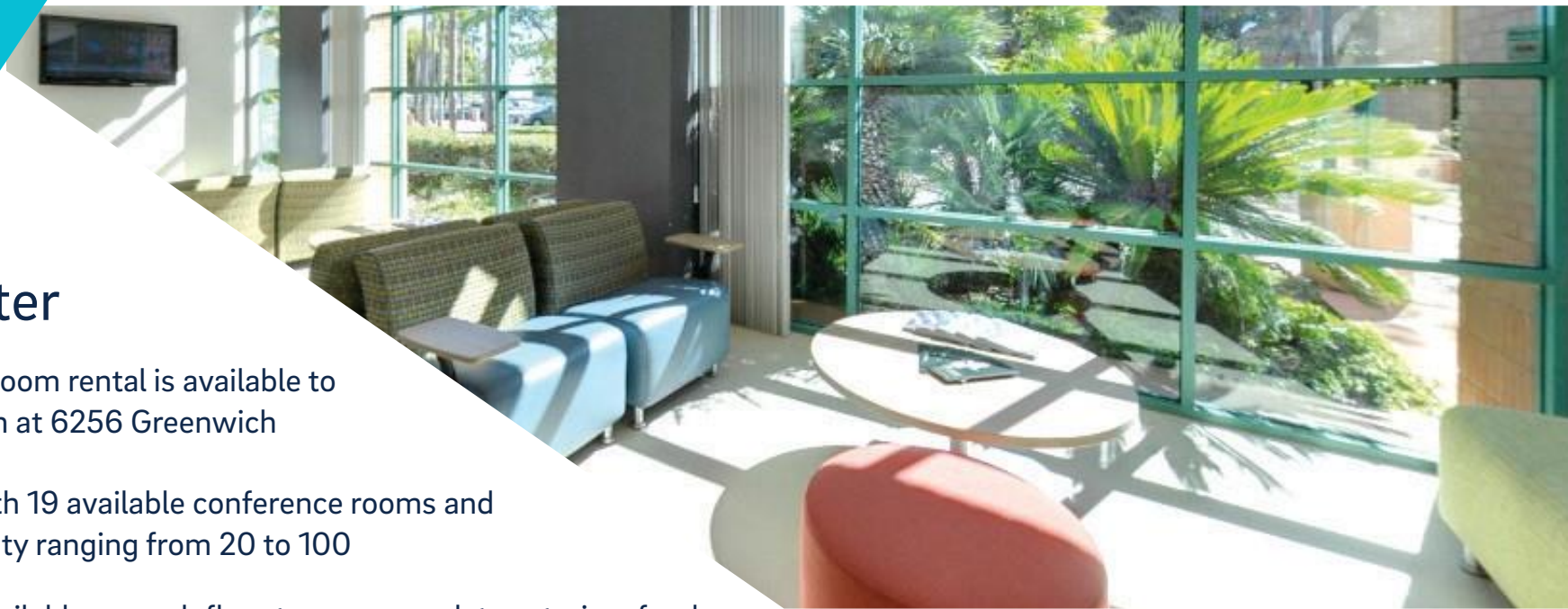




UCSD Extension Conference Center

Event space and conference room rental is available to tenants from UCSD Extension at 6256 Greenwich

- 3 floors of event space with 19 available conference rooms and computer labs with capacity ranging from 20 to 100
- Functional kitchens are available on each floor to accommodate catering, food and beverages
- Conference rooms available for a nominal fee



6333-6363 GREENWICH

Availability

6333 Greenwich Drive

Suite	RSF	Description
150	3,766	Upgraded corner suite with excellent windowline.
175	4,713	Ground floor suite with dedicated exterior suite entrance.
205	1,953	4 offices on the window, interior conference room, reception, kitchen/work room and small open area.

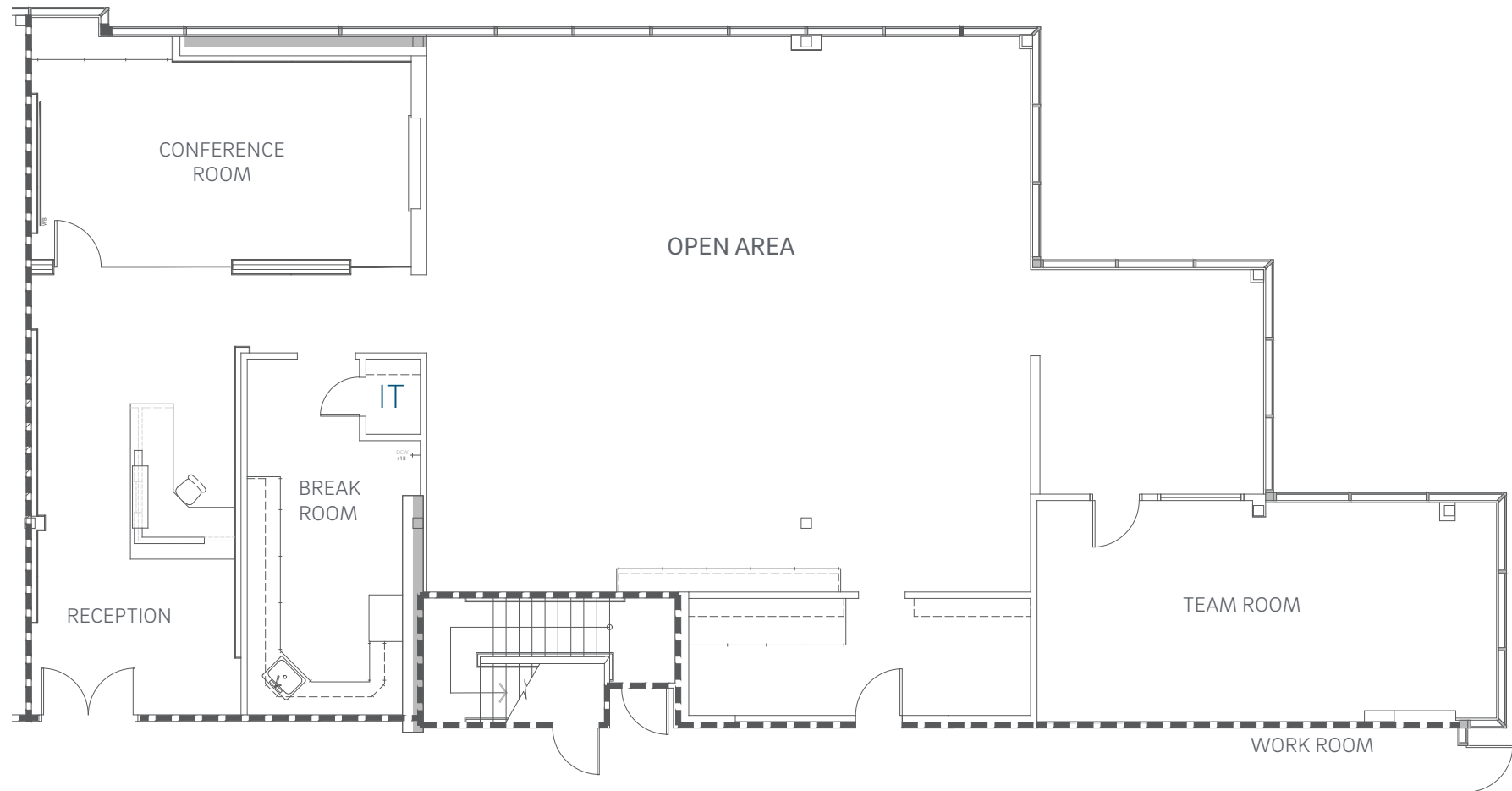


6333 Greenwich Drive

Suite 150 | 3,766 RSF

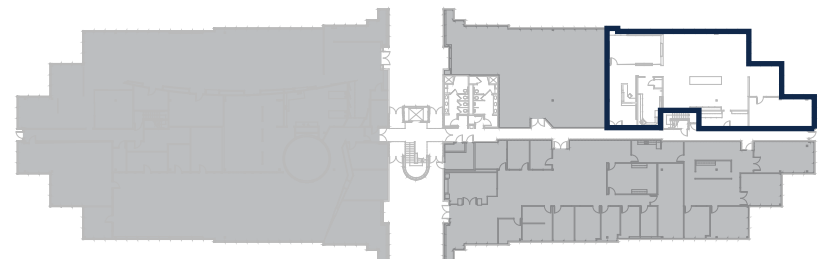


Virtual Tour - 6333_Suite 150



Bess Wakeman
858.410.1245
bess.wakeman@jll.com
RE Lic. No. 01177659

Richard Gonor
858.410.1243
richard.gonor@jll.com
RE Lic. No. 01142178



6333 Greenwich Drive

Suites 175 | 4,713 RSF



Virtual Tour - 6333_Suite 175



Bess Wakeman
858.410.1245
bess.wakeman@jll.com
RE Lic. No. 01177659

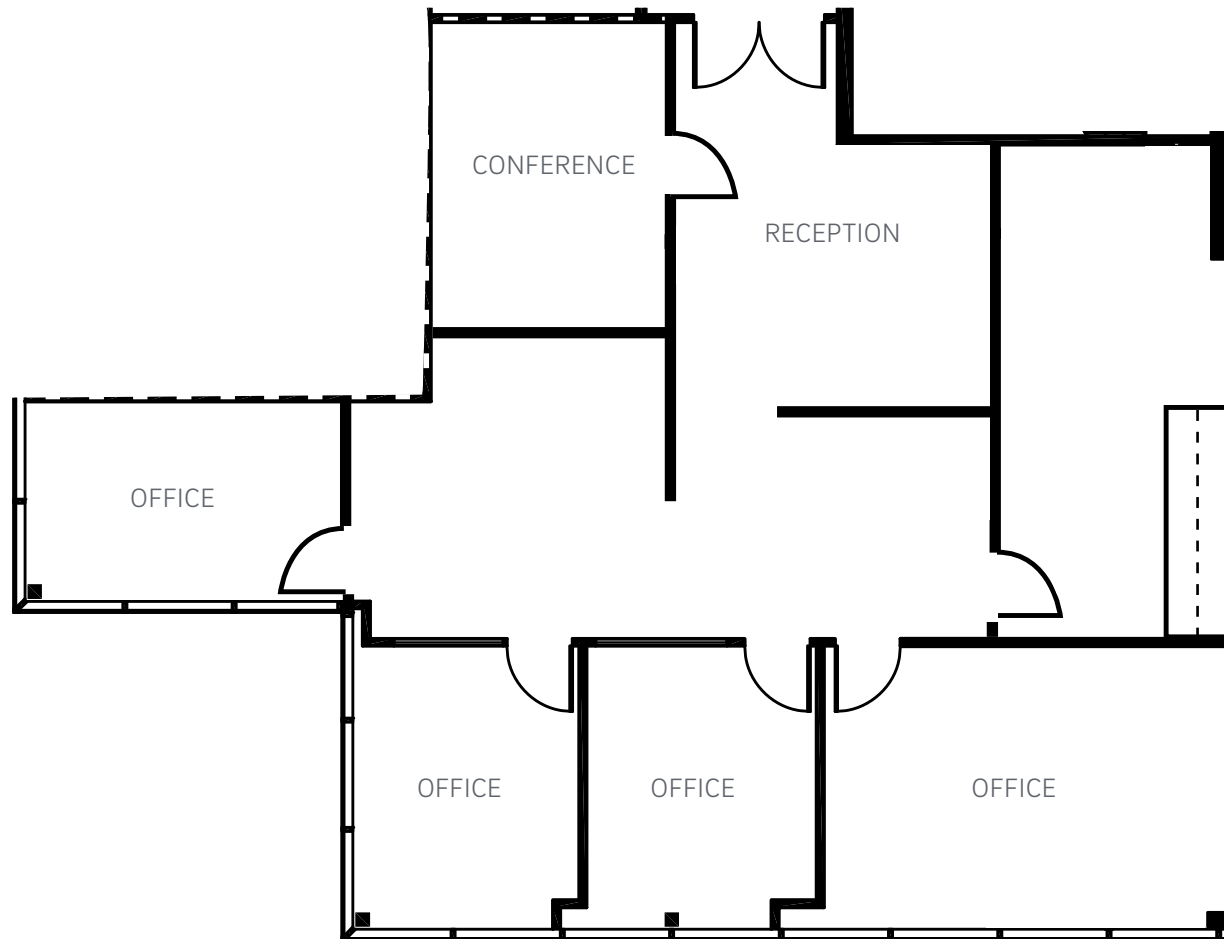
Richard Gonor
858.410.1243
richard.gonor@jll.com
RE Lic. No. 01142178



6333 Greenwich Drive Suites 205 | 1,953 RSF



Virtual Tour - 6333_Suite 205



Bess Wakeman
858.410.1245
bess.wakeman@jll.com
RE Lic. No. 01177659

Richard Gonor
858.410.1243
richard.gonor@jll.com
RE Lic. No. 01142178





6165-6256 GREENWICH

Availability

6165 Greenwich Drive

Suite	RSF	Description
110	4,938	Ground floor corner suite with prominent location at Building entrance. 10 private offices, reception, conference, open area, large work room and large kitchen.
120	970	2 private offices on the window, open area and 2 interior offices. (Available with 60 days notice)
180	5,583	Ground floor opportunity with abundant window line. New layout with mix of open space and private offices planned.

6256 Greenwich Drive

Suite	RSF	Description
425	7,923	Recently completed spec suite! Prominent glass double door entry. Perimeter private offices and large open area.



6165 Greenwich Drive

Suite 110* | 4,938 RSF

Available January 2024

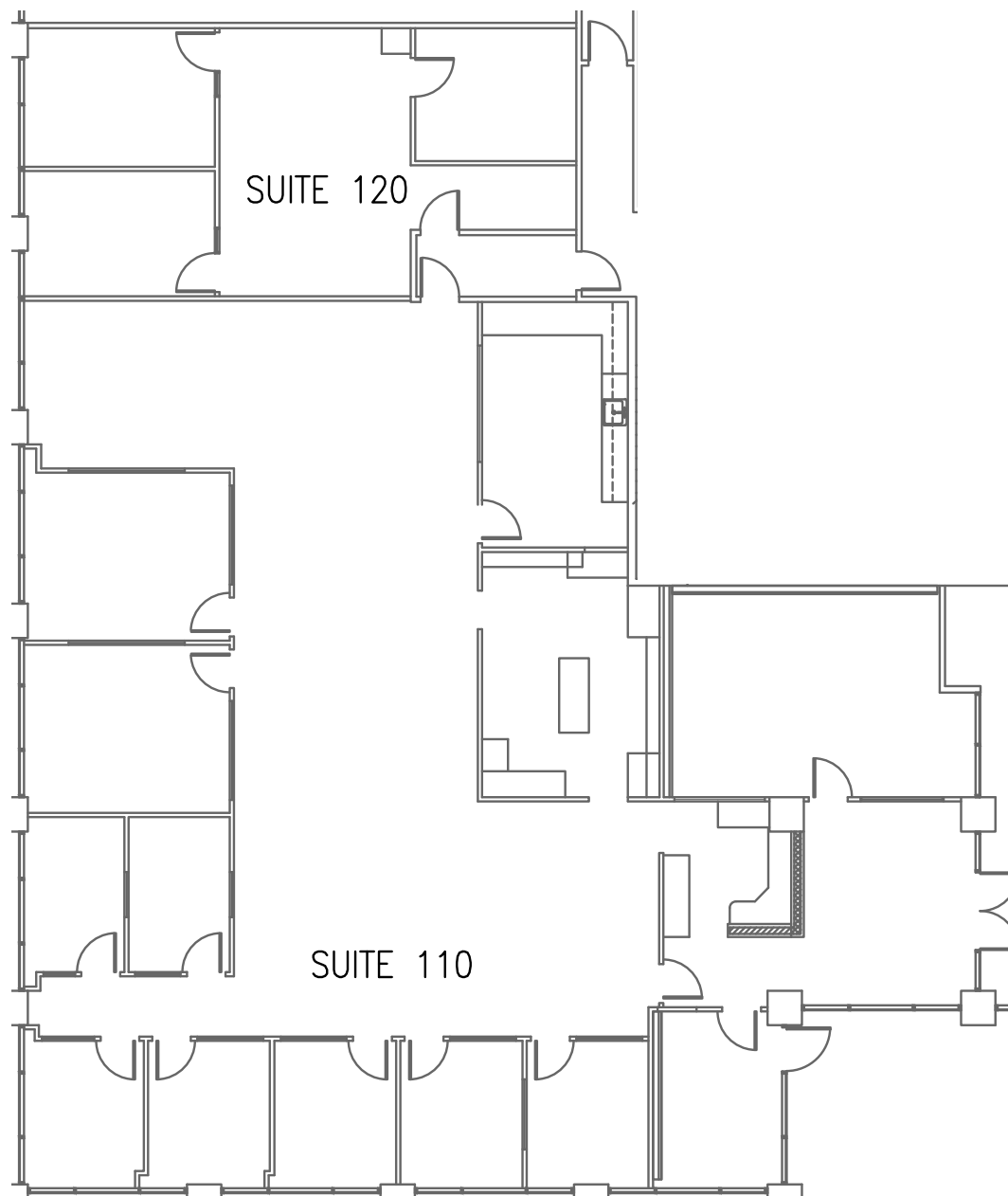
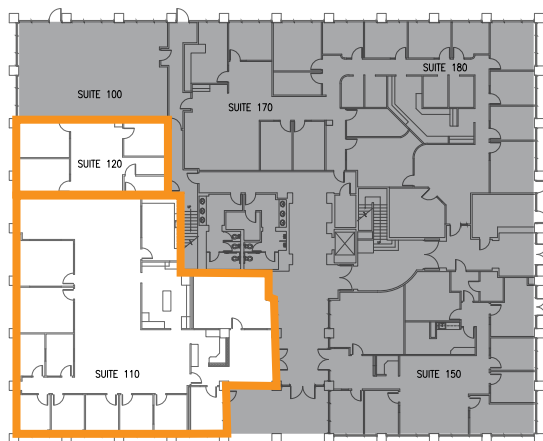
Suite 120* | 970 RSF

Available with 60 days notice



Virtual Tour - 6165 Suite_120

*Suites are contiguous for up to \pm 6k RSF



Bess Wakeman
858.410.1245
bess.wakeman@jll.com
RE Lic. No. 01177659

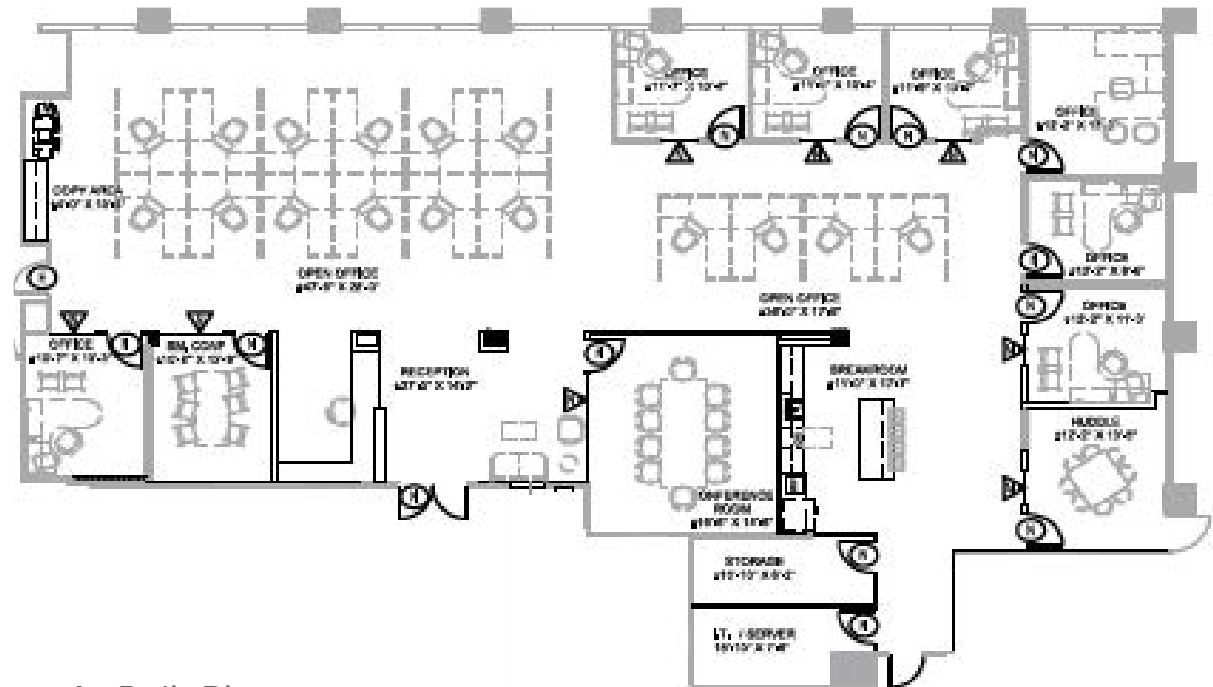
Richard Gonor
858.410.1243
richard.gonor@jll.com
RE Lic. No. 01142178

Suite 180 | 5,583 RSF

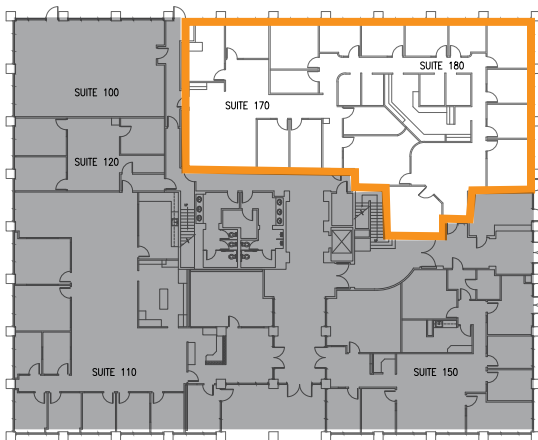
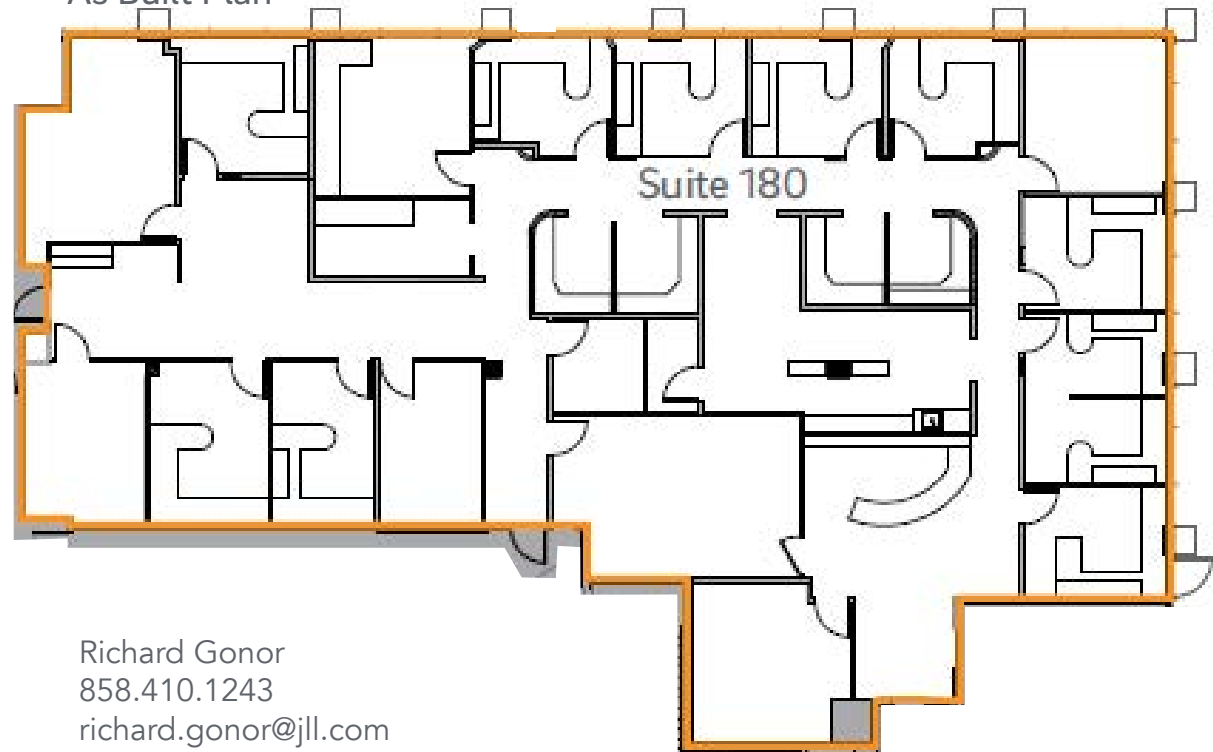


Virtual Tour - 6165_Suite 180

Hypothetical Plan



As Built Plan



Bess Wakeman
858.410.1245
bess.wakeman@jll.com
RE Lic. No. 01177659

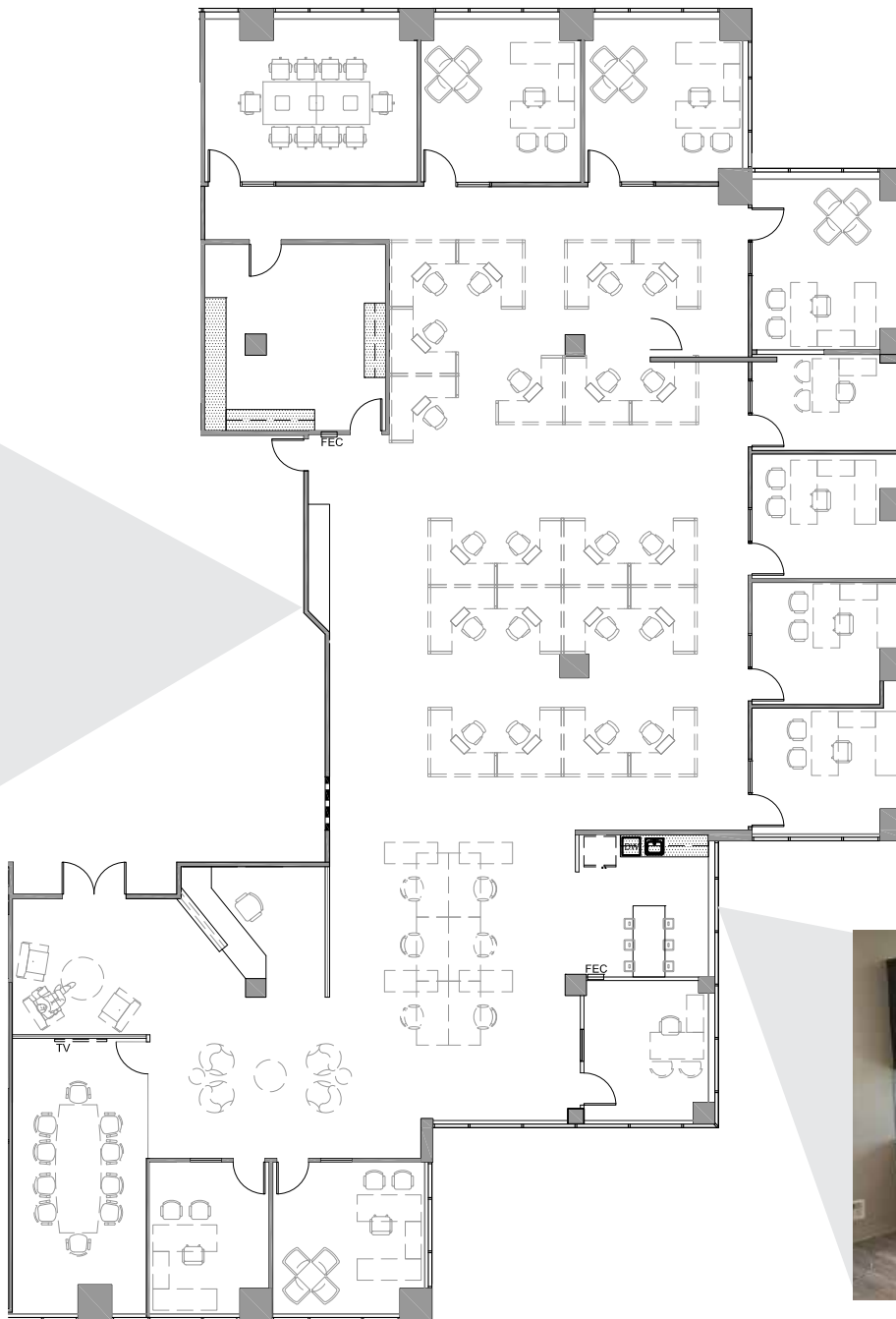
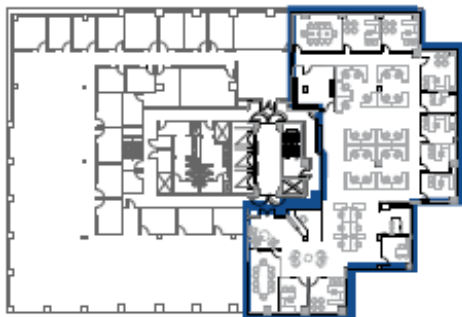
Richard Gonor
858.410.1243
richard.gonor@jll.com
RE Lic. No. 01142178



6256 Greenwich Drive Suite 425 | 7,923 RSF



Virtual Tour - 6256_Suite 425



Bess Wakeman
858.410.1245
bess.wakeman@jll.com
RE Lic. No. 01177659

Richard Gonor
858.410.1243
richard.gonor@jll.com
RE Lic. No. 01142178



UCSD Extension



CONVERGE

Governor Park

UC San Diego Innovation Hub

UC San Diego

CONVERGE

Governor Park

UC San Diego Innovation Hub



Bess Wakeman
858.410.1245
bess.wakeman@jll.com
RE Lic. No. 01177659

Richard Gonor
858.410.1243
richard.gonor@jll.com
RE Lic. No. 01142178

Although information has been obtained from sources deemed reliable, neither Owner nor JLL makes any guarantees, warranties, or representations, express or implied, as to the completeness or accuracy as to the information contained herein. Any projections, opinions, assumptions or estimates used are for example only. There may be differences between projected and actual results and those differences may be material. The property may be withdrawn without notice. Neither Owner nor JLL accepts any liability for any loss or damage suffered by any party resulting from reliance on this information. If the recipient of this information has signed a confidentiality agreement regarding this matter, this information is subject to the terms of that agreement. ©2023 Jones Lang LaSalle IP, Inc. All rights reserved.