



JLL SEE A BRIGHTER WAY

Available





New retail development
2000 W Jefferson, Joliet, IL 60435

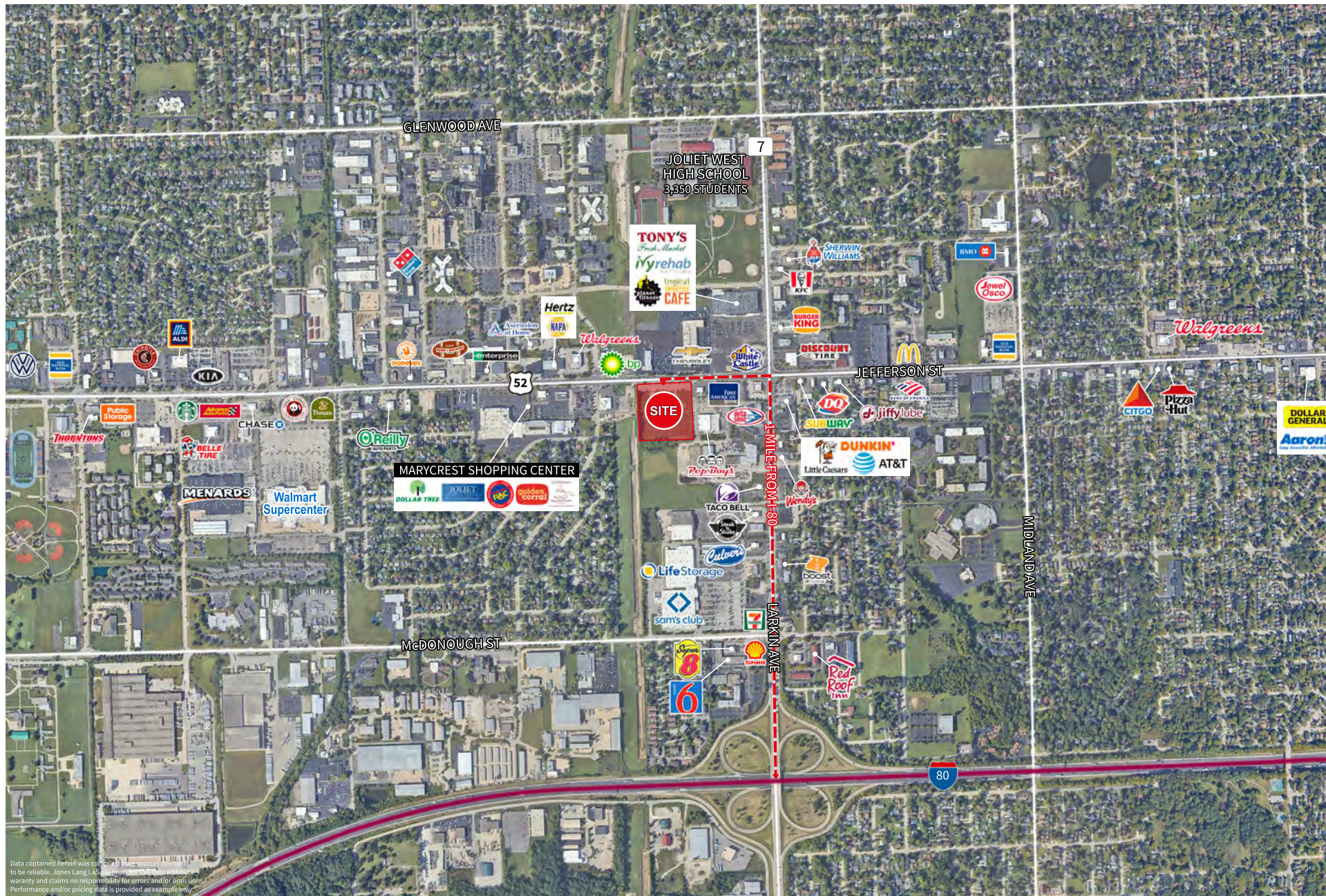
Property overview & demographics

- 7.95 AC (divisible) with over 560' of Jefferson St frontage
- Multiple site plan options to accommodate a variety of uses including retail, restaurant and medical
- Positioned along dynamic Jefferson St retail corridor
- Regionally accessible with I-80 interchange within 3/4 mile



Location	2000 W Jefferson Joliet, IL 60435
Size	7.95 AC (divisible)
Asking rent	Upon request
Status	Pre-development
Possession	Upon completion

		1 mile	3 miles	5 miles
	Population	11,004	83,175	162,044
	Daytime Population	18,229	81,016	151,350
	Households	4,377	31,890	58,140
	Average HH income	\$73,333	\$78,759	\$87,983



Floorplans

Jefferson St: 24,600 vpd



JLL**Steve Schwartz**Steve.Schwartz@jll.com

+1 312 228 2157

Jose GonzalezJose.O.Gonzalez@jll.com

+1 312 228 2155

Dan ReynoldsDans.Reynolds@jll.com

+1 312 228 2437