



For Lease



Courthouse Corporate Center at **The Islips**

320 Carleton Avenue
Central Islip, NY 11722



Specifications

Availabilities

| | | | |
|-------------|--------------|----------|---|
| 1st Floor | Suite 1300 | 1,670 SF | Build to suit interior, features kitchen area |
| | Suite 1700 | 1,276 SF | Build to suit interior, has private restroom, kitchen with sink |
| 7th Floor | Suite 7500 | 5,246 SF | Build to suit interior, has full kitchen with sink |
| | | | |
| Rental rate | Upon Request | | |

Property highlights



Courthouse Corporate Center is under new ownership and management



Upcoming Capital Improvements:

- **New common areas – lobbies & corridors**
- **Upgraded, LED lighting**
- **Enhanced security system**
- **New signage & updated directories**
- **Updated common area restrooms & elevators**



Conference center



24/7 building access



Energy efficient operable windows



Cafe



Storage space

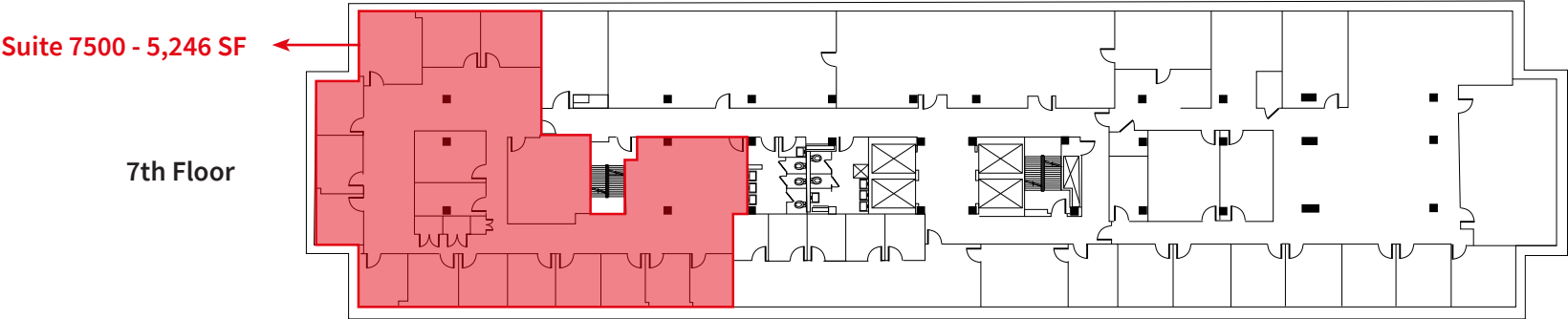
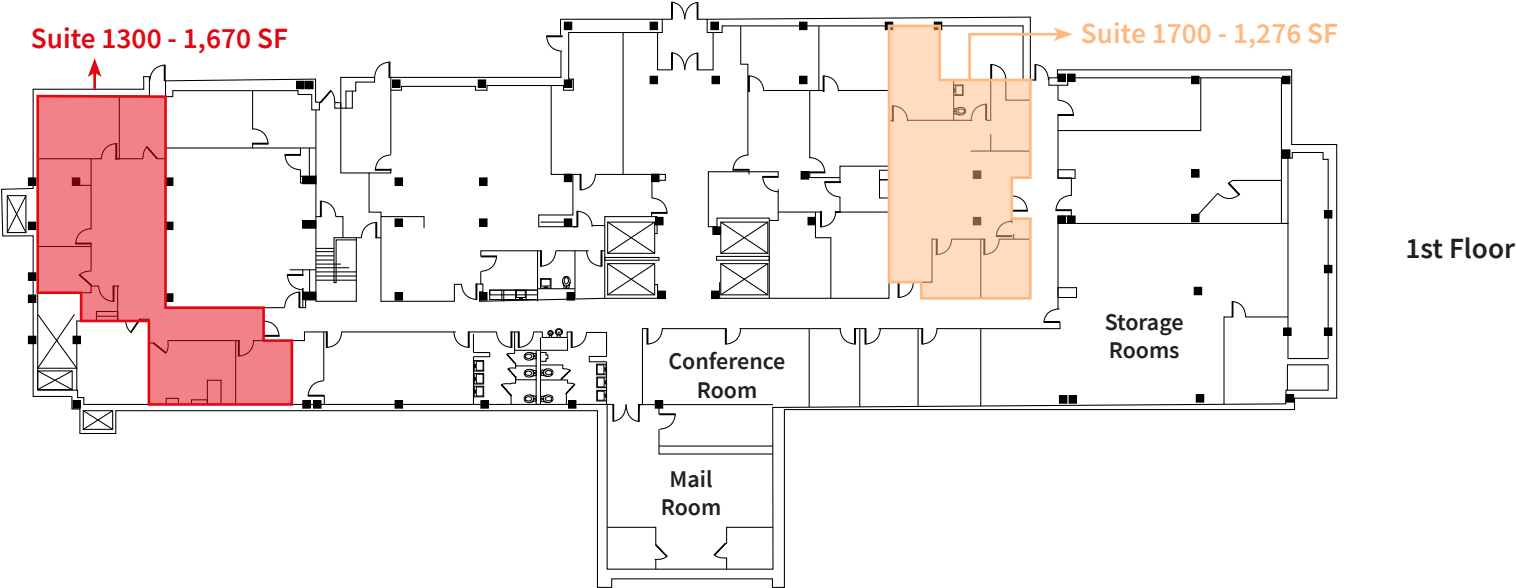


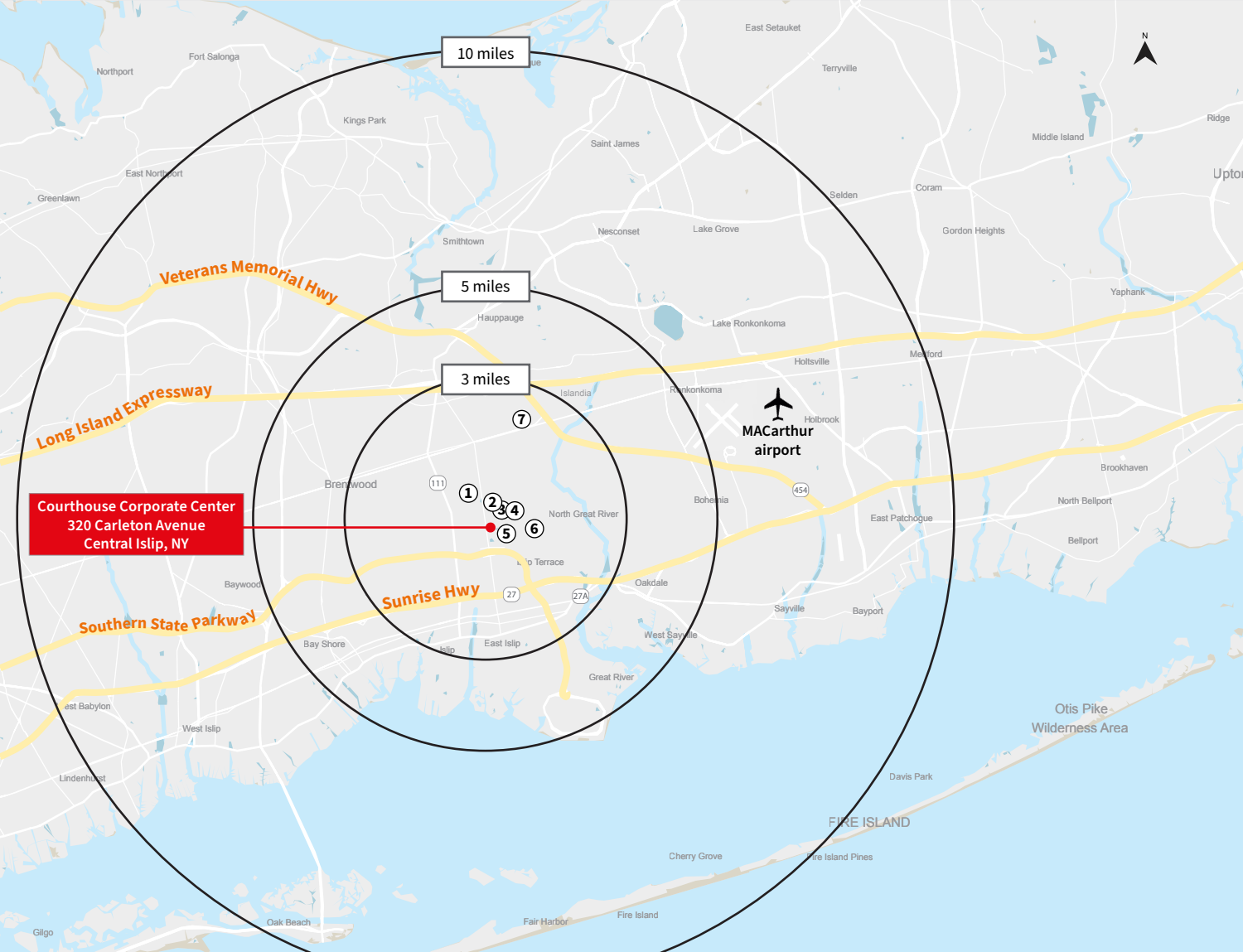
Abundant on-site parking



Floor plans

320 Carleton Avenue, Central Islip | NY 11722, USA





Contact

Ray Ruiz
Managing Director
+ 1 631 962 2890
ray.ruiz@jll.com

Marianne Dugan
Vice President
+ 1 631 962 2891
marianne.dugan@jll.com

John A. Nielsen
Vice President
+1 631 962 7382
johna.nielsen@jll.com



1. Central Islip Town Center:
Target, Home Depot, Subway, Bethpage Federal Credit Union
2. Courtyard by Marriot
3. Residence Inn by Marriot
4. Fairfield Properties Ballpark
5. Courts
6. Touro Law Center
7. Long Island Rail Road

Although information has been obtained from sources deemed reliable, neither Owner nor JLL makes any guarantees, warranties or representations, express or implied, as to the completeness or accuracy as to the information contained herein. Any projections, opinions, assumptions or estimates used are for example only. There may be differences between projected and actual results, and those differences may be material. The Property may be withdrawn without notice. Neither Owner nor JLL accepts any liability for any loss or damage suffered by any party resulting from reliance on this information. If the recipient of this information has signed a confidentiality agreement regarding this matter, this information is subject to the terms of that agreement.
©2023 Jones Lang LaSalle IP, Inc. All rights reserved.