

# 5025 Adams Ave Ogden, Utah 84403



5025  
SHELLEY B. CLARKE  
BUILDING



Jones Lang LaSalle Brokerage, Inc.

## 4th Floor: ±7,500 RSF



# Building Highlights



±47,766 RSF  
4 Stories



Available  
October 1, 2023



±7,500 RSF  
4th Floor



\$22.50/SF  
NNN



Abundant  
Parking



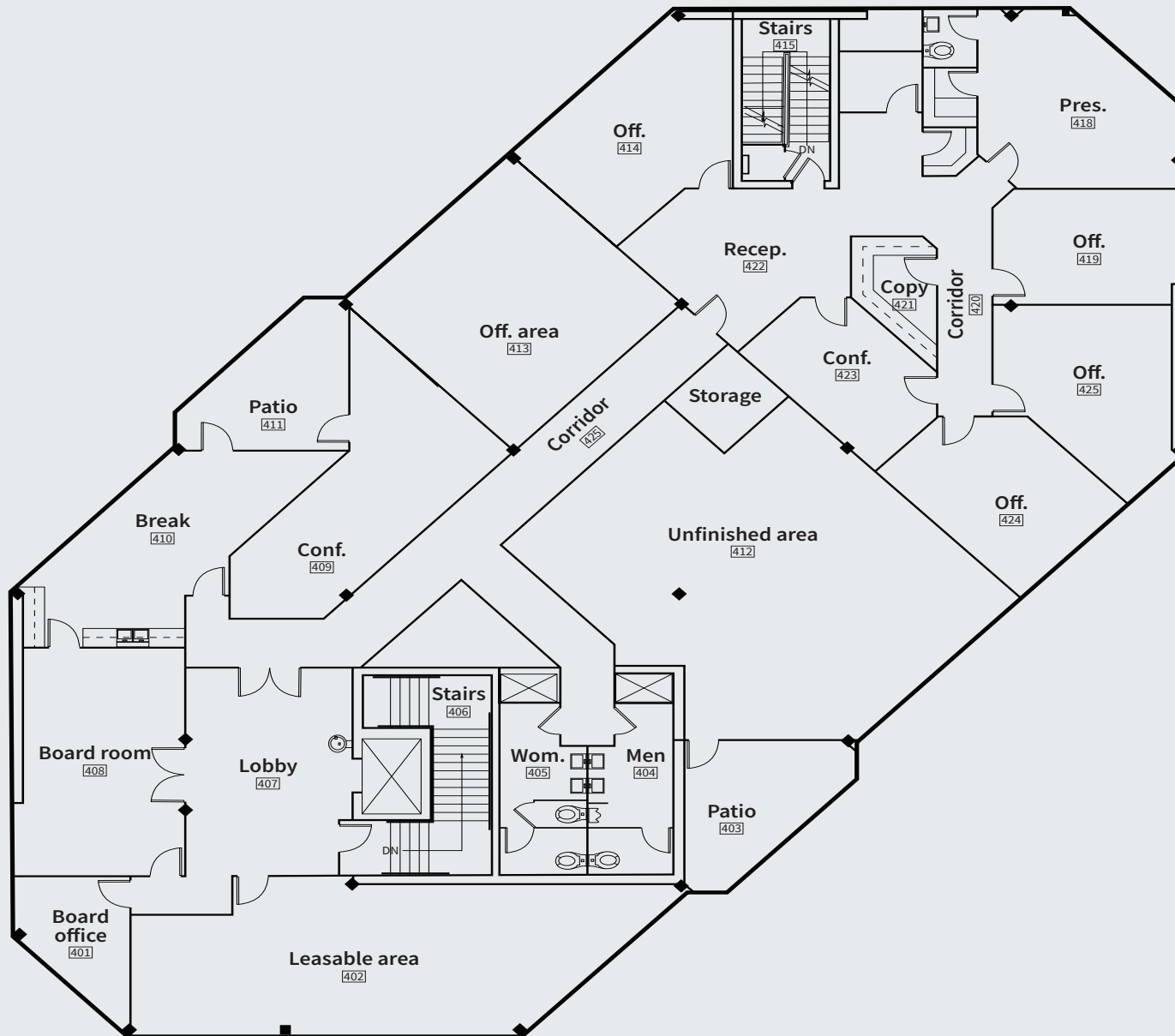
Highly Desirable Washington  
Blvd. Office Location



5 years  
Lease Term



6 Private Offices, 3 Conference  
Rooms, Reception Area, Break  
Room, Copy Room, & 2  
Balconies



# Floor Plan

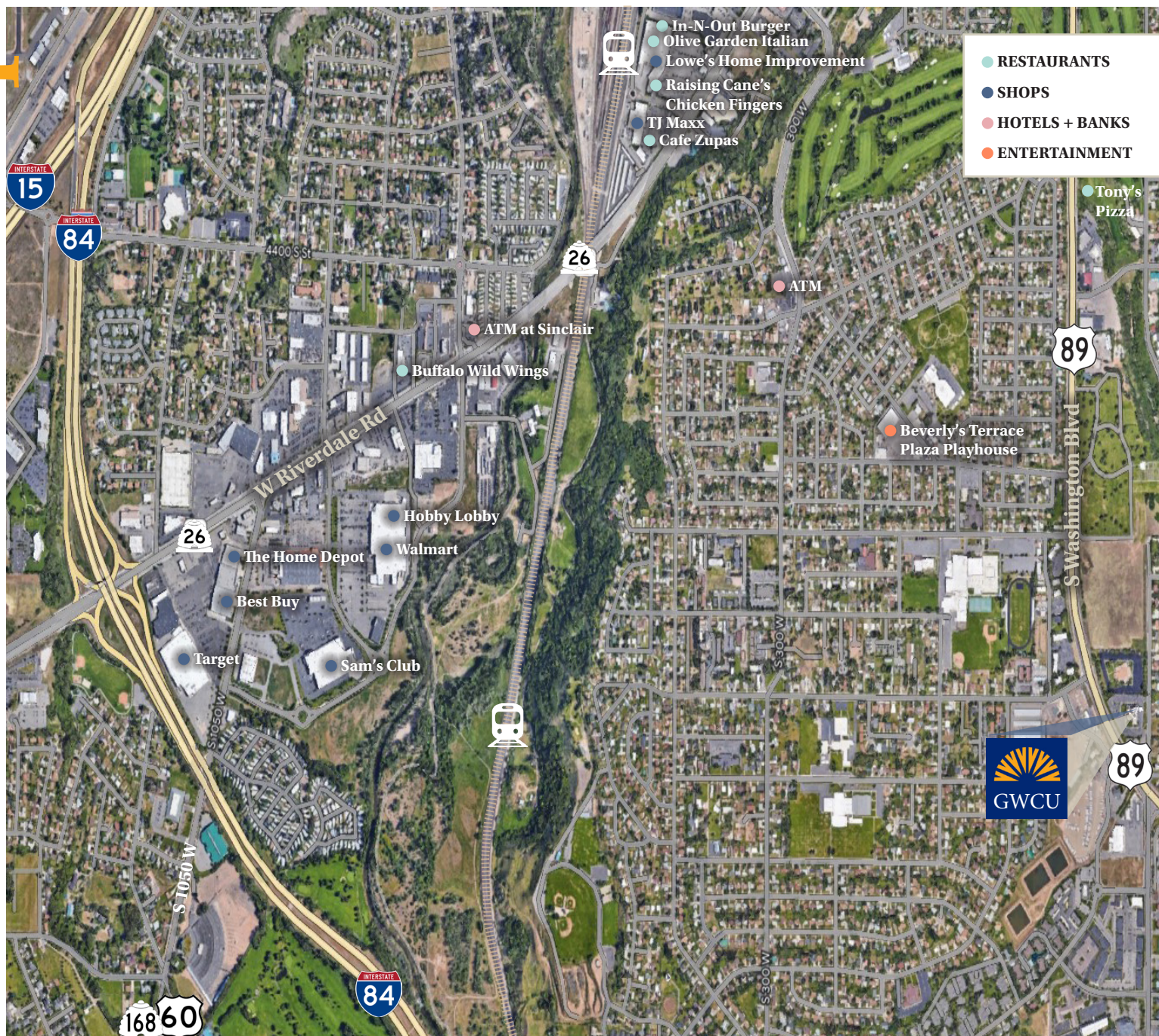
Floor 4: ±7,500 RSF Available







# Area Map



Easy  
Access to  
**I-84, I-15  
& Hwy 89**

Conveniently  
located near  
shopping  
centers and  
restaurants





**Bronson Rawlins**  
+ 1 801 456 9513  
[bronson.rawlins@jll.com](mailto:bronson.rawlins@jll.com)

**Brandon Rawlins**  
+ 1 801 456 9521  
[brandon.rawlins@jll.com](mailto:brandon.rawlins@jll.com)

Jones Lang LaSalle Brokerage, Inc. 111 S Main Street, Suite 300, Salt Lake City, Utah 84111  
©2023 Jones Lang LaSalle LP, Inc. All rights reserved. All information contained herein is from sources  
deemed reliable; however, no representation or warranty is made to the accuracy thereof.