



Interpark 70

Bldg. B – Suite 40

14,547 SF

14155 East 42nd Avenue

Denver, CO 80239



Property Specifications

- Available Space - Suite 40: 14,547 SF
 - Office: 1,169 SF
- Building size: 138,000 SF
- Lease Rate: \$10.00/SF NNN
- ESFR Sprinklers
- Ceiling Height: 24'
- 2 Dock High Doors
- 2 Drive-in Doors
- Power: 200 - 1200a/480v 3p

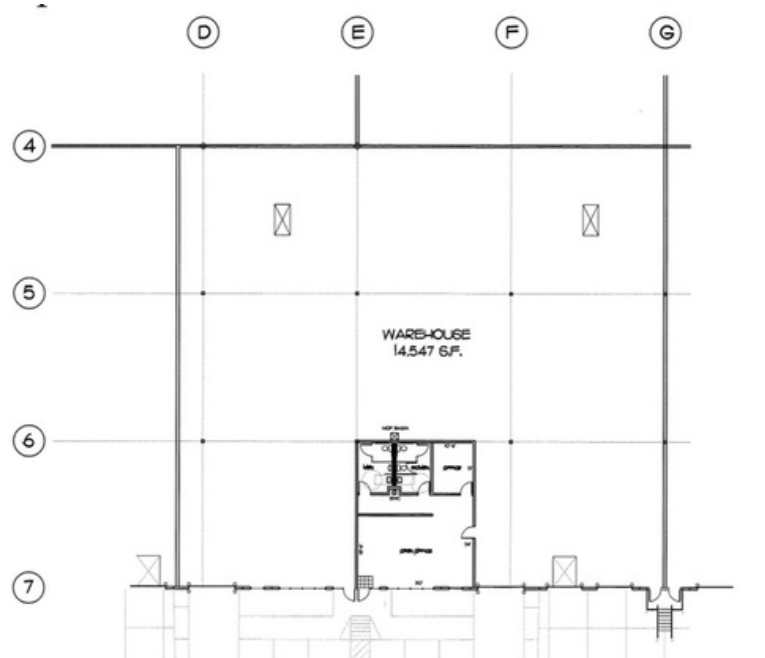
Other Highlights

- Outstanding I-70 exposure and signage
- Front park/Front Load Design
- Surrounded by area amenities including retail and restaurants

Location Highlights

- 16 minutes to Denver International Airport
- 22 minutes to Downtown Denver

Floor Plan



Aerial View



For leasing information, please contact:

Mitchell Zatz, SIOR
Senior Managing Director
303 217 7972
mitch.zatz@jll.com

Carmon Hicks, SIOR
Senior Managing Director
303 217 7975
carmon.hicks@jll.com

Jason White
Managing Director
303 390 5200
jason.white@jll.com



Although information has been obtained from sources deemed reliable, neither Owner nor JLL makes any guarantees, warranties or representations, express or implied, as to the completeness or accuracy as to the information contained herein. Any projections, opinions, assumptions or estimates used are for example only. There may be differences between projected and actual results, and those differences may be material. The Property may be withdrawn without notice. Neither Owner nor JLL accepts any liability for any loss or damage suffered by any party resulting from reliance on this information. If the recipient of this information has signed a confidentiality agreement regarding this matter, this information is subject to the terms of that agreement. ©2023. Jones Lang LaSalle IP, Inc. All rights reserved