



5,000 SF Available
Industrial space for lease

1701 Westfork Drive, Suite 108

Lithia Springs, GA 30122
I-20 West



Property specifications

- 60,000 SF total building size
- 5,000 SF available
- 1,067 SF office
- 3,933 SF warehouse
- 134' building depth
- 20' clear height
- Fully sprinklered
- 25'D x 40'W column spacing
- Rear load configuration
- 90' shared truck court
- 2 dock-high doors
- LED lighting

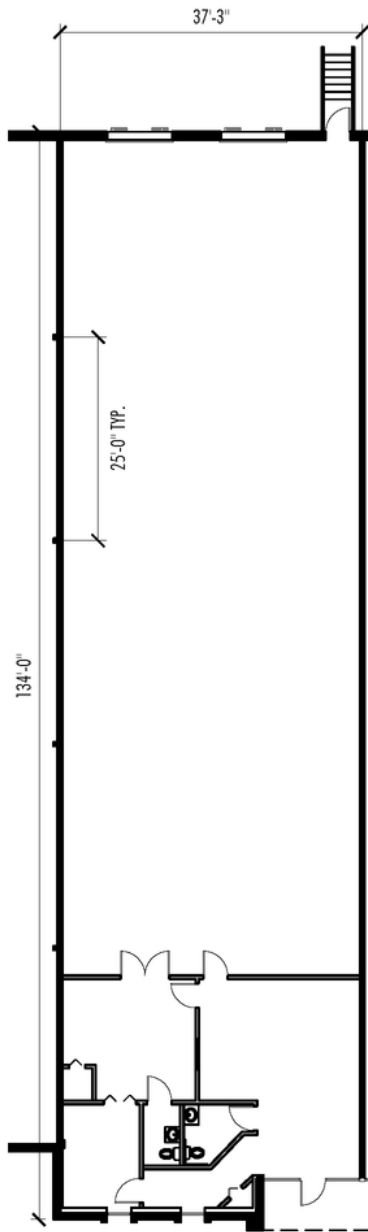
Location

- Located 2.3 miles off of I-20 in Douglas County
- Hartsfield-Jackson Atlanta Airport – 24.1 miles
- Atlanta Center - 16.6 miles

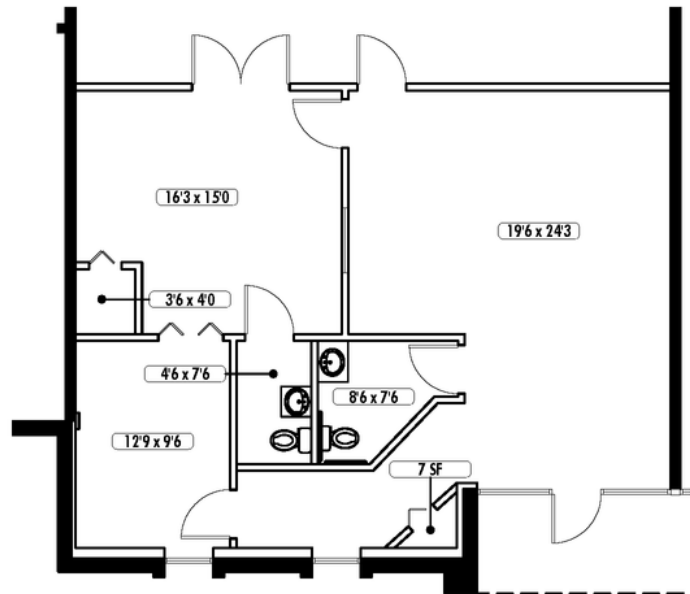
Intermodals

- Austell, GA - 4 miles
- Fairburn, GA - 28 miles





SUITE PLAN: 1/16" = 1'-0"



OFFICE PLAN: 1/8" = 1'-0"

Westfork Industrial Center - Suite 108

1,067 SF Total Office | 3,933 SF Total Warehouse

Reed Davis, SIOR

Executive Managing Director
Atlanta, GA

404.995.2227
reed.davis@jll.com

Hannah Dillard

Associate
Atlanta, GA

404.995.2250
hannah.dillard@jll.com