



# Office Space for Lease

- Flexible unit sizes available
- Strong ownership
- On-site café
- Potential storage/loading use
- Secured parking
- Panoramic views of Newark Airport and New York City
- Direct access to NJ Turnpike
- Façade renovations

**1201 Corbin St  
Elizabeth, NJ 07201**

---

**Jon Compitello**  
+1 732 590 4164  
[jon.compitello@am.jll.com](mailto:jon.compitello@am.jll.com)

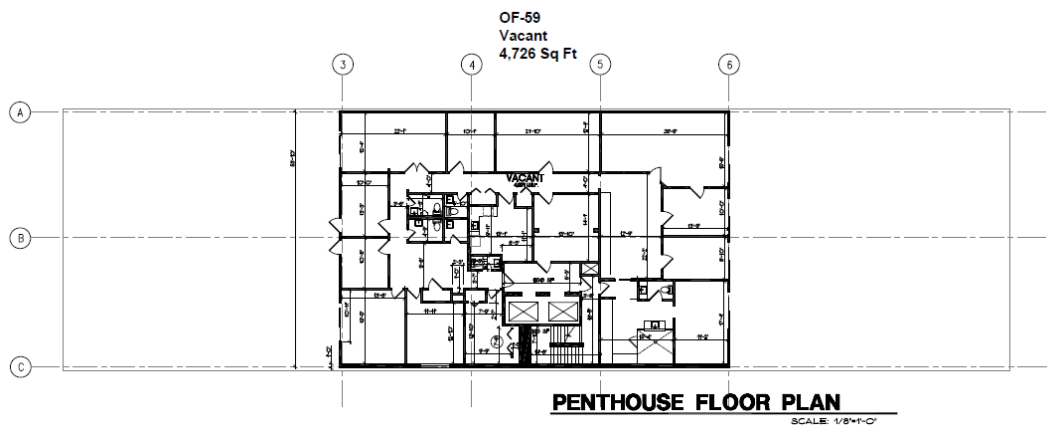
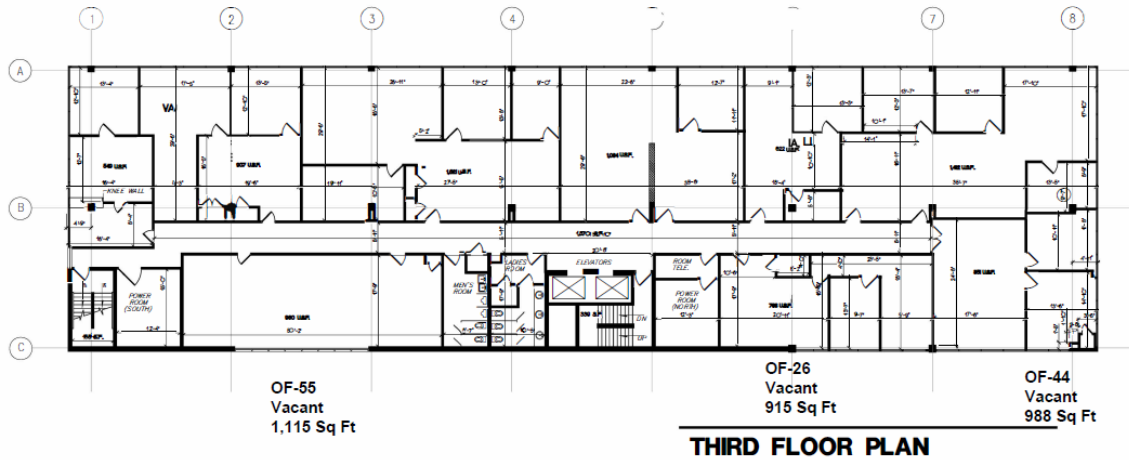
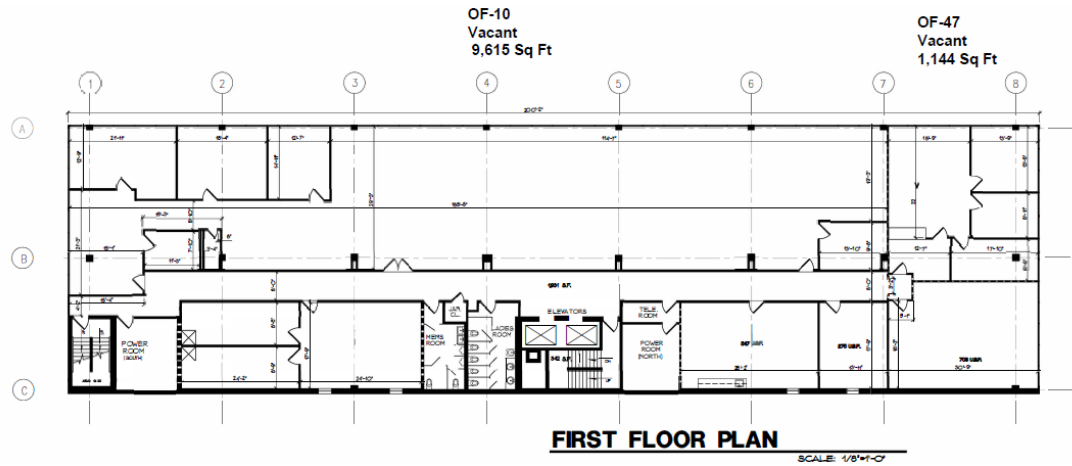
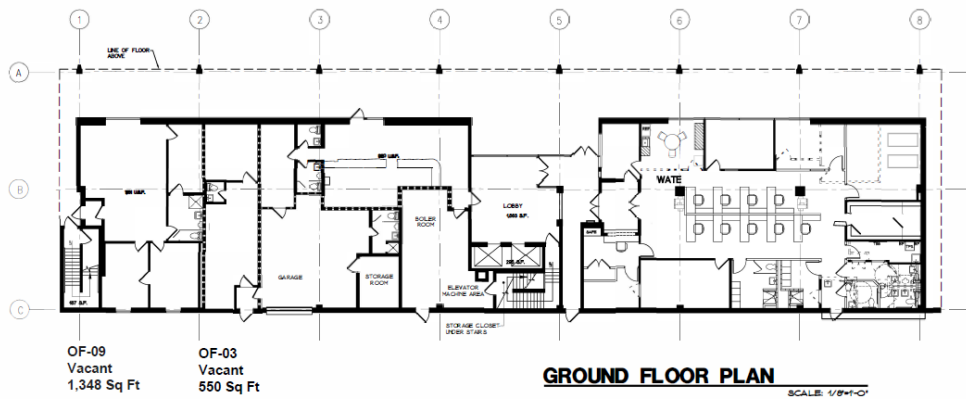
**Chris Conklin**  
+1 973 829 4675  
[chris.conklin@am.jll.com](mailto:chris.conklin@am.jll.com)

**Alex Crane**  
+1 732 590 4187  
[alex.crane@am.jll.com](mailto:alex.crane@am.jll.com)

---

Although information has been obtained from sources deemed reliable, neither Owner nor JLL makes any guarantees, warranties or representations, express or implied, as to the completeness or accuracy as to the information contained herein. Any projections, opinions, assumptions or estimates used are for example only. There may be differences between projected and actual results, and those differences may be material. The Property may be withdrawn without notice. Neither Owner nor JLL accepts any liability for any loss or damage suffered by any party resulting from reliance on this information. If the recipient of this information has signed a confidentiality agreement regarding this matter, this information is subject to the terms of that agreement. ©2019 Jones Lang LaSalle IP, Inc. All rights reserved.





Although information has been obtained from sources deemed reliable, neither Owner nor JLL makes any guarantees, warranties or representations, express or implied, as to the completeness or accuracy as to the information contained herein. Any projections, opinions, assumptions or estimates used are for example only. There may be differences between projected and actual results, and those differences may be material. The Property may be withdrawn without notice. Neither Owner nor JLL accepts any liability for any loss or damage suffered by any party resulting from reliance on this information. If the recipient of this information has signed a confidentiality agreement regarding this matter, this information is subject to the terms of that agreement. ©2019 Jones Lang LaSalle IP, Inc. All rights reserved.

