

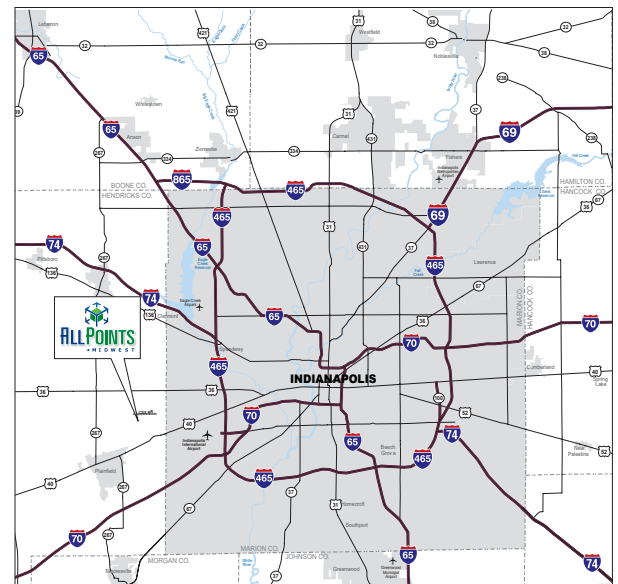


www.allpointsmw.com

SAMPLE BUILDING HIGHLIGHTS

- **BTS flexibility Site 15: 1,010,387 SF**
- **BTS flexibility Site 16: 550,484 SF**
- Cross-docked
- 1:10,000 SF dock door ratio with levelers
- 4 drive-in doors
- 40' minimum clear height
- 56' x 50' typical column spacing with 60' speed bays
- ESFR fire sprinkler system
- LED lighting
- Expandable auto parking
- Dedicated trailer parking

PROPERTY LOCATION



CONTACT

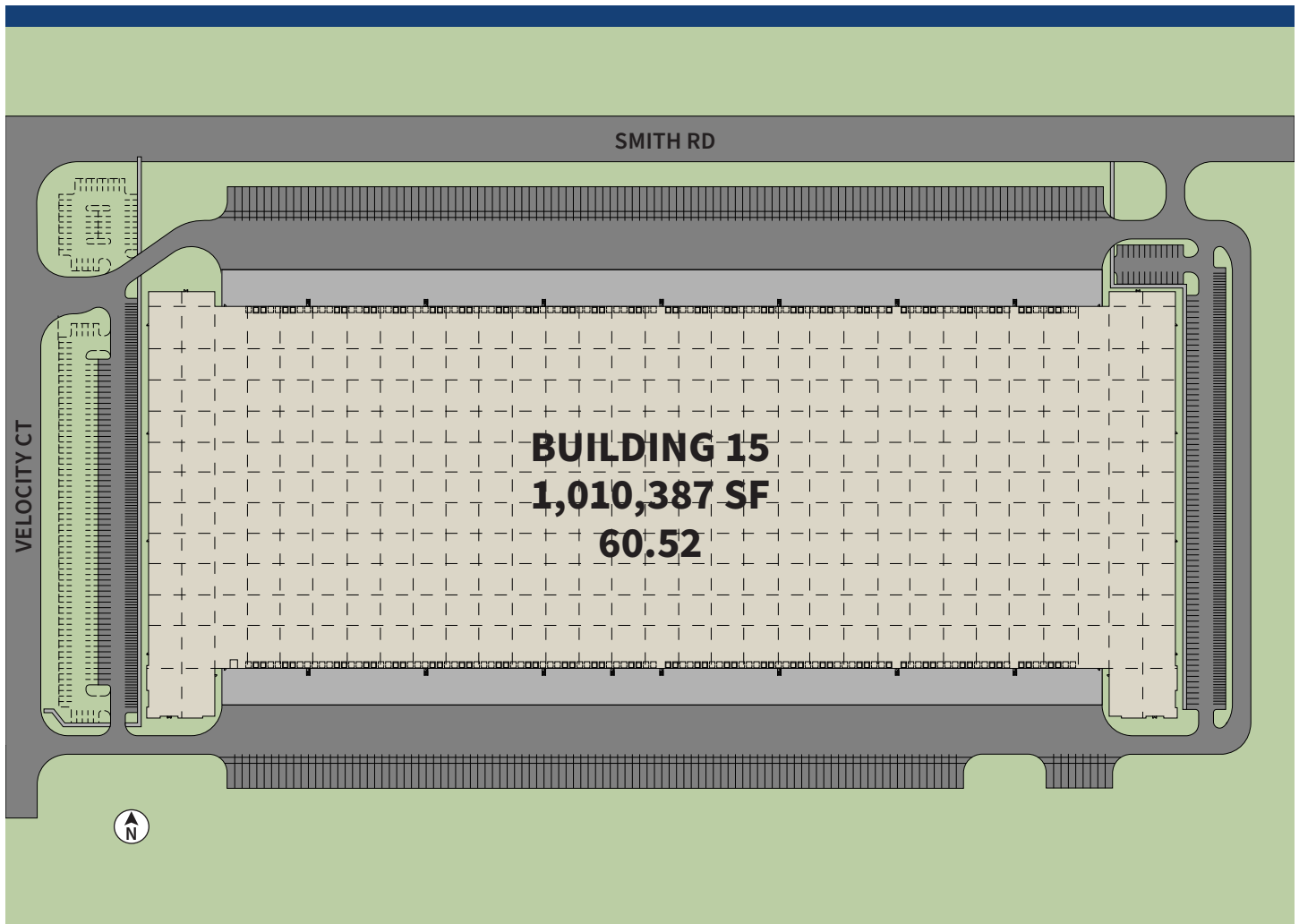
Brian Seitz, SIOR

317.810.7184
brian.seitz@jll.com

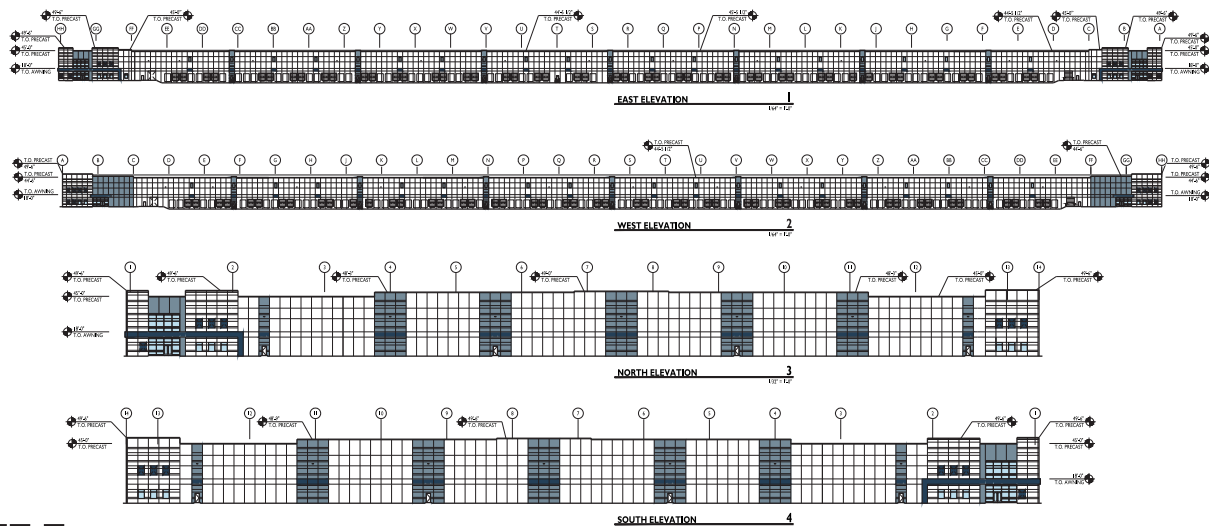
Steve Schwegman, SIOR

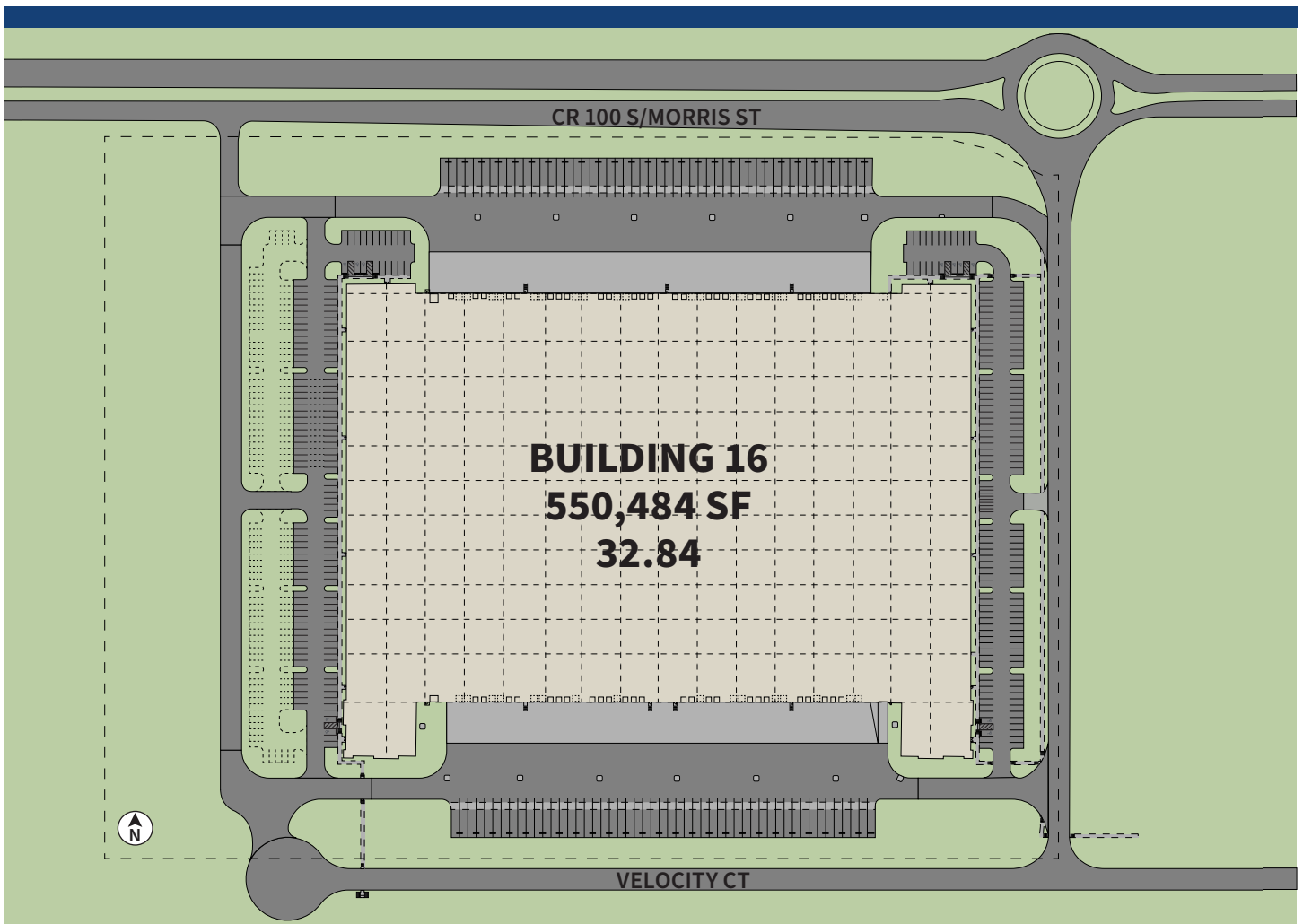
317.810.7185
steve.schwegman@jll.com





BUILDING ELEVATIONS





UTILITIES



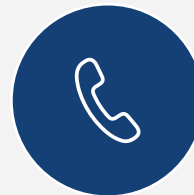
ELECTRIC
Duke Energy



GAS
Vectren



WATER
Town of Plainfield



TELECOM
AT&T



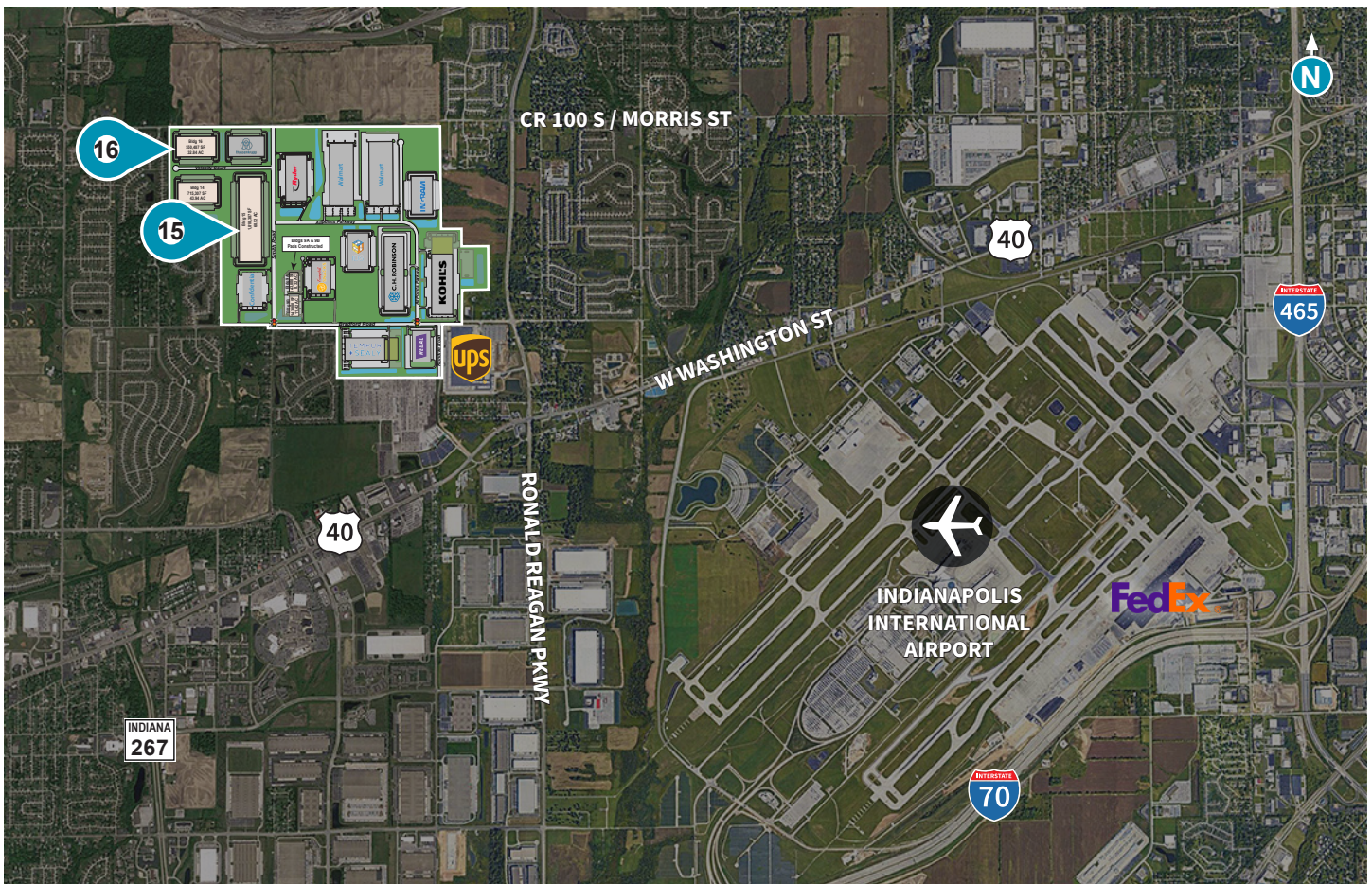
INTERNET
AT&T

STATE OF INDIANA BUSINESS & TAX INCENTIVES

The Indiana Economic Development Corporation offers many business tax incentives, corporate tax credits and economic development programs for companies creating new jobs and investment in Indiana. The business tax structure is also very competitive. Indiana's corporate income tax rate is currently 4.9%. Further, Indiana has a 7% state sales tax rate and does not impose any local sales taxes. A complete list can be found at iedc.in.gov/incentives.

Source: IEDC

LOCATION



CONTACT

Brian Seitz, SIOR
317.810.7184
brian.seitz@jll.com

Steve Schwegman, SIOR
317.810.7185
steve.schwegman@jll.com

www.allpointsmw.com



Although information has been obtained from sources deemed reliable, neither Owner nor JLL makes any guarantees, warranties or representations, express or implied, as to the completeness or accuracy as to the information contained herein. Any projections, opinions, assumptions or estimates used are for example only. There may be differences between projected and actual results, and those differences may be material. The Property may be withdrawn without notice. Neither Owner nor JLL accepts any liability for any loss or damage suffered by any party resulting from reliance on this information. If the recipient of this information has signed a confidentiality agreement regarding this matter, this information is subject to the terms of that agreement. © 2023. Jones Lang LaSalle IP, Inc. All rights reserved.