

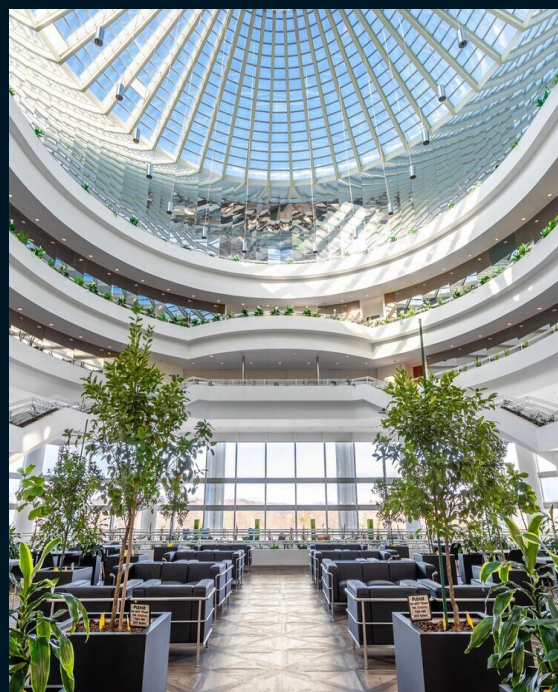
Partial 4th floor – 10,618 RSF
Term through September 2032

For sublease

800 Westchester Avenue, Rye Brook, NY

Building Highlights:

- Brand-new, office intensive space, renovated in 2022
- Sublandlord will consider leaving furniture in place
- Beautifully-appointed offices with water views
- Double-door glass entry on the 4th floor, the main amenity floor of the building; easy access for guests and employees
- Building features fully renovated main lobby, cafeteria, executive dining room, 150-seat auditorium, fitness center with squash courts, hair salon, shoeshine, sundry shop, private shuttle to Rye train, 100% covered parking



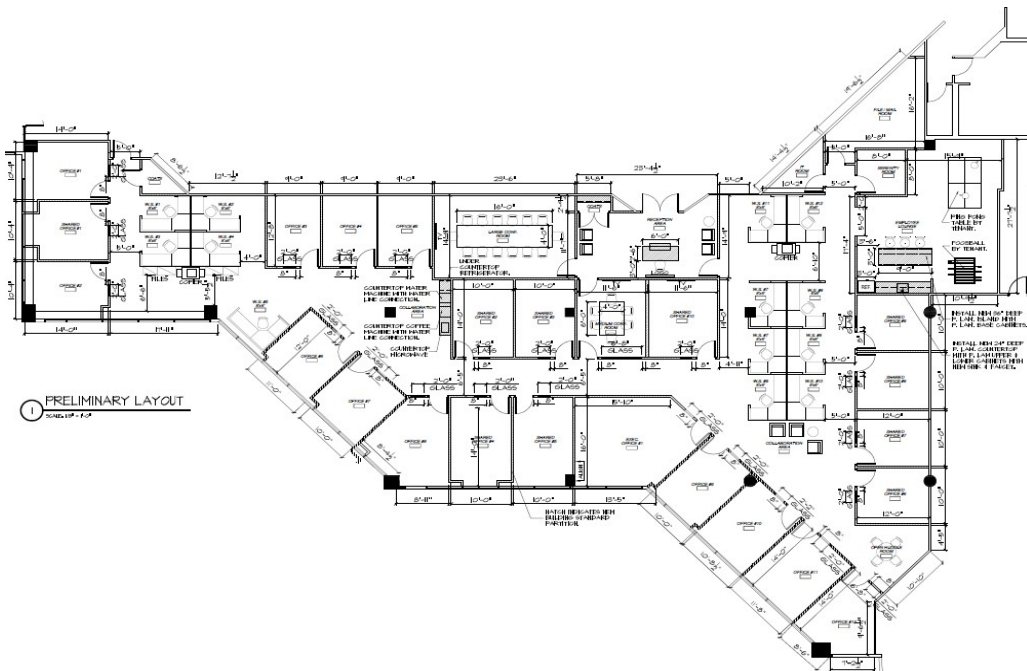
Mark Jacobs
203-331-6792
mark.jacobs@jll.com

Evan H. Margolin
212-479-9985
evan.margolin@jll.com

jll.com

For sublease

800 Westchester Avenue, Rye Brook, NY



Mark Jacobs
203-331-6792
mark.jacobs@jll.com

Evan H. Margolin
212-479-9985
evan.margolin@jll.com

jll.com

For sublease

800 Westchester Avenue, Rye Brook, NY



Mark Jacobs
203-331-6792
mark.jacobs@jll.com

Evan H. Margolin
212-479-9985
evan.margolin@jll.com

jll.com