



# For sublease

30 Glenn Street, White Plains, NY

**2,820 RSF available**

## Specifications:

- Partial 2nd floor 2,820 RSF
- Aggressively priced
- Term: through 8/31/2024 – direct extension available
- Built/furnished space
- 2.00 / 1,000 SF covered parking
- Excellent access to I-287, Taconic, Sprain Brook and Bronx River Parkways
- 2-minute walk from North White Plains Train Station

### **Conor Gill**

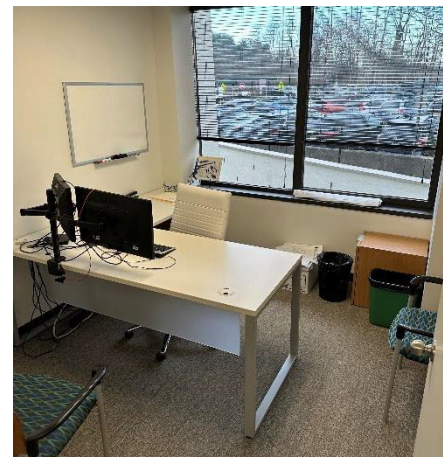
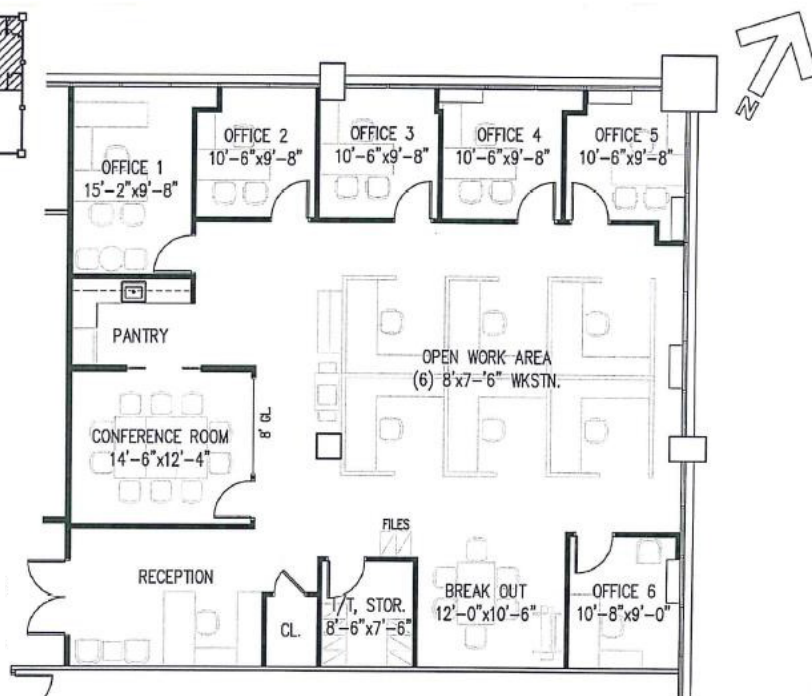
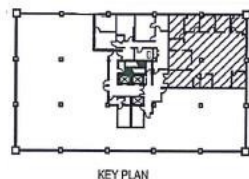
Executive Vice President

+1 203 705 2258

[Conor.Gill@jll.com](mailto:Conor.Gill@jll.com)

# For sublease

30 Glenn Street, White Plains, NY



**Conor Gill**

Executive Vice President

+1 203 705 2258

[Conor.Gill@jll.com](mailto:Conor.Gill@jll.com)

[jll.com](http://jll.com)