



Foster 205

Building B

11427 SE Foster Rd

Portland, OR

±15,960 RSF Available

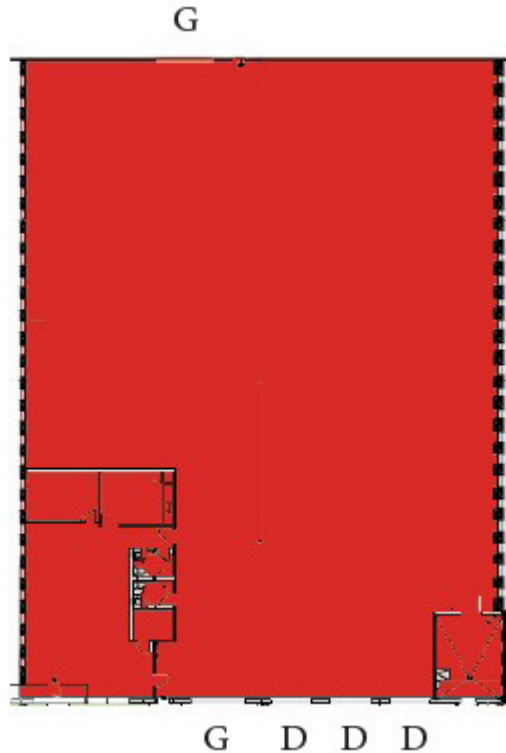
Contacts

Tyler Sheils, SIOR
Managing Director
Licensed in OR
+1 503 972 8603
Tyler.sheils@jll.com

Kevin Kriesien
Senior Vice President
Licensed in OR & WA
+1 503 972 8613
Kevin.kriesien@jll.com



Property specifications



Available s.f.	15,960 s.f.
Warehouse s.f.	14,192 s.f.
Office s.f.	1,768 s.f.
Clear height	24'
Dock doors	3
Grade level doors	2
Sprinklers	ESFR
Zoning	IG2 - General Industrial 2
Timing	Available

Highlights

- 160' building depth
- 40' x 50' column spacing
- Located 1 mile to I-205
- 0.94/1,000 parking
- Call for lease rate

Contacts

Tyler Sheils, SIOR
Managing Director
Licensed in OR
+1 503 972 8603
Tyler.sheils@jll.com

Kevin Kriesien
Senior Vice President
Licensed in OR & WA
+1 503 972 8613
Kevin.kriesien@jll.com

