

# 11700 W. Lake Park Drive

Milwaukee, WI 53224

---

**32,334 SF**  
Office Building  
For Sale and Lease



**Nick Hepner**  
Vice President  
+1 414 944 2107  
[nick.hepner@jll.com](mailto:nick.hepner@jll.com)

**Michael Streit**  
Executive Vice President  
+1 414 944 2104  
[michael.streit@jll.com](mailto:michael.streit@jll.com)

Jones Lang LaSalle Brokerage, Inc. a licensed real estate broker.



## Building specifications

Building size	32,334 SF
Stories	One
Built/Renovated	1986 / 2020
Parking	4.46 / 1,000 SF
Lot Size	3.03 AC
Tax ID	076-0032-000-3
2022 Assessment	\$1,827,900
2021 Taxes	\$6,021.01

**+/- 1,830 - 32,334 RSF**

Available space

**\$12.00 - \$14.00 / RSF MG**

Lease rate

**Contact Broker**

Sale price

## Property highlights



### Great fit

for an owner/user



### Easily devisable

for a variety of size requirements



### Available

for occupancy with 30-60 days' notice



### New carpet

and paint



### Value add

opportunity



### Competitive

lease rates

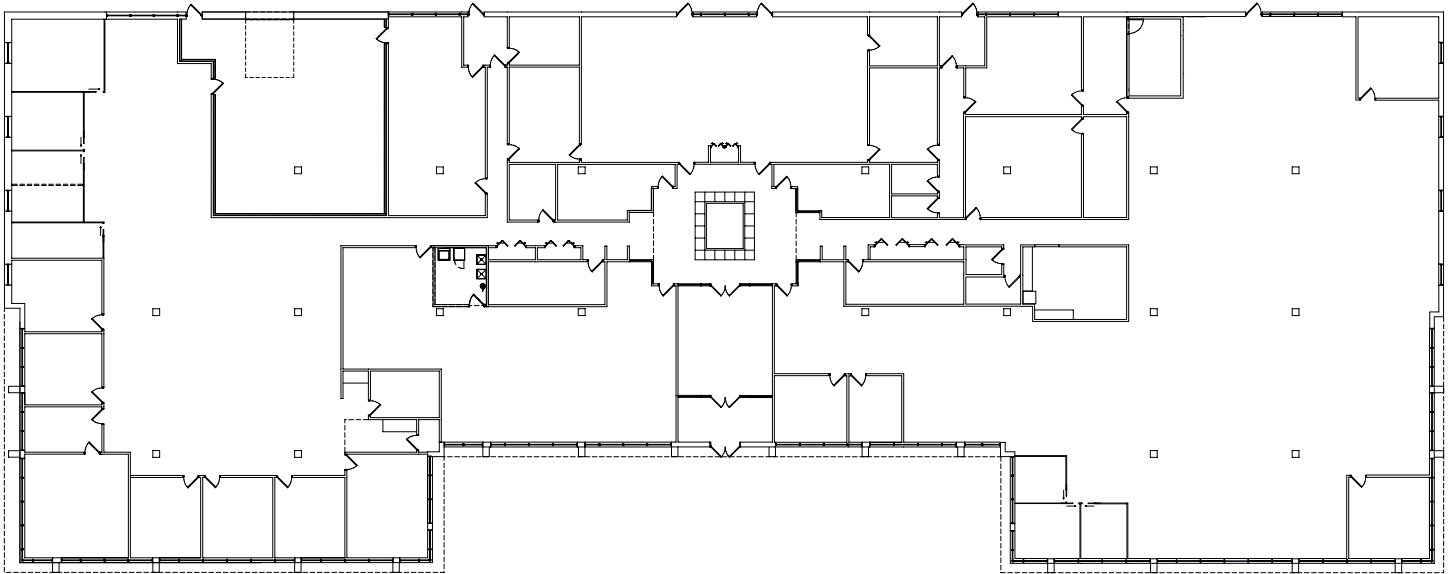


### Motivated

ownership

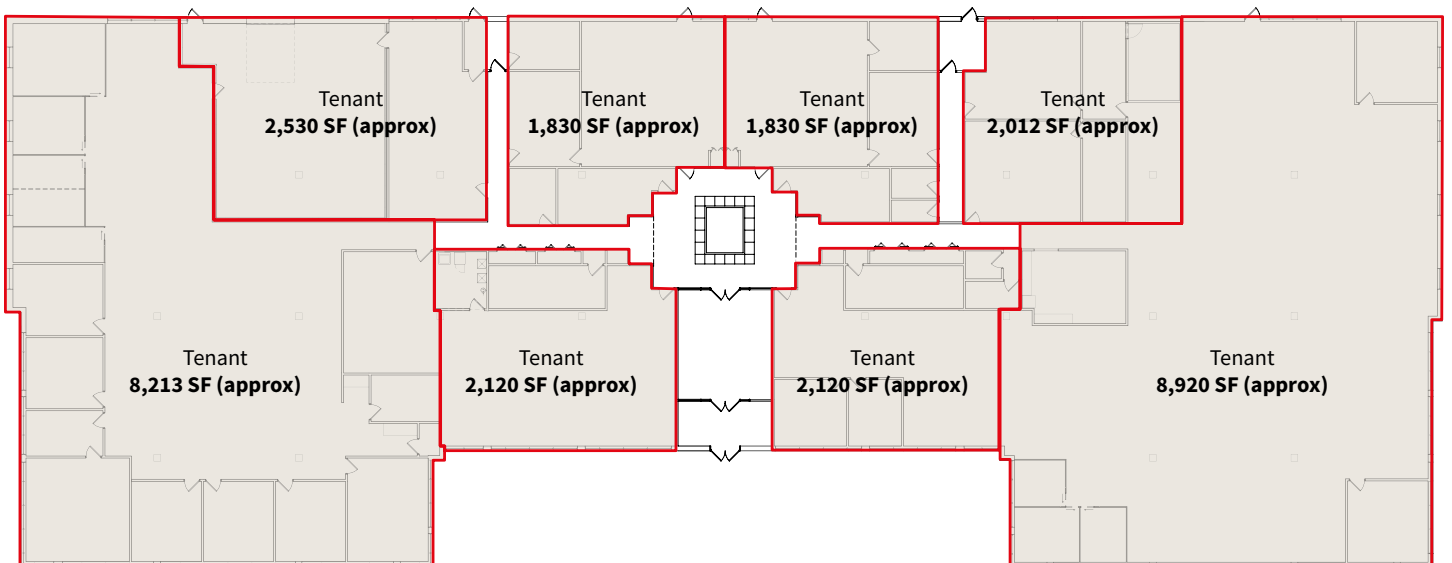


**11700 W. Lake Park Drive**  
**32,334 RSF**



Standard floorplan

---

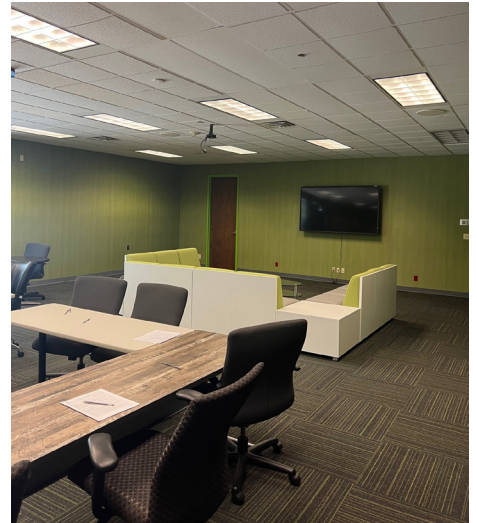


Demised option

---



**11700 W. Lake Park Drive**  
**32,334 RSF**





Drive Time to Downtown Milwaukee:  
**21 minutes (17.8 miles via I-41)**

Drive Time to Downtown Waukesha:  
**28 minutes (21.6 miles via I-41/94)**

## For more information, contact:



**Nick Hepner**  
Vice President  
+1 414 944 2107  
[nick.hepner@jll.com](mailto:nick.hepner@jll.com)

**Michael Streit**  
Executive Vice President  
+1 414 944 2104  
[michael.streit@jll.com](mailto:michael.streit@jll.com)

Although information has been obtained from sources deemed reliable, JLL does not make any guarantees, warranties or representations, express or implied, as to the completeness or accuracy as to the information contained herein. Any projections, opinions, assumptions or estimates used are for example only. There may be differences between projected and actual results, and those differences may be material. JLL does not accept any liability for any loss or damage suffered by any party resulting from reliance on this information. If the recipient of this information has signed a confidentiality agreement with JLL regarding this matter, this information is subject to the terms of that agreement. ©2022. Jones Lang LaSalle IP, Inc. All rights reserved.