



100 Pine St.

Plug & Play Full Floor Sublease

- 13,427 RSF
- Full 20th floor
- Term through March 31, 2027

Griggs Ziesing

griggs.ziesing@jll.com

415 847 6860

CA Lic# 01914746

Jonathan Allen

jonathan.allen@jll.com

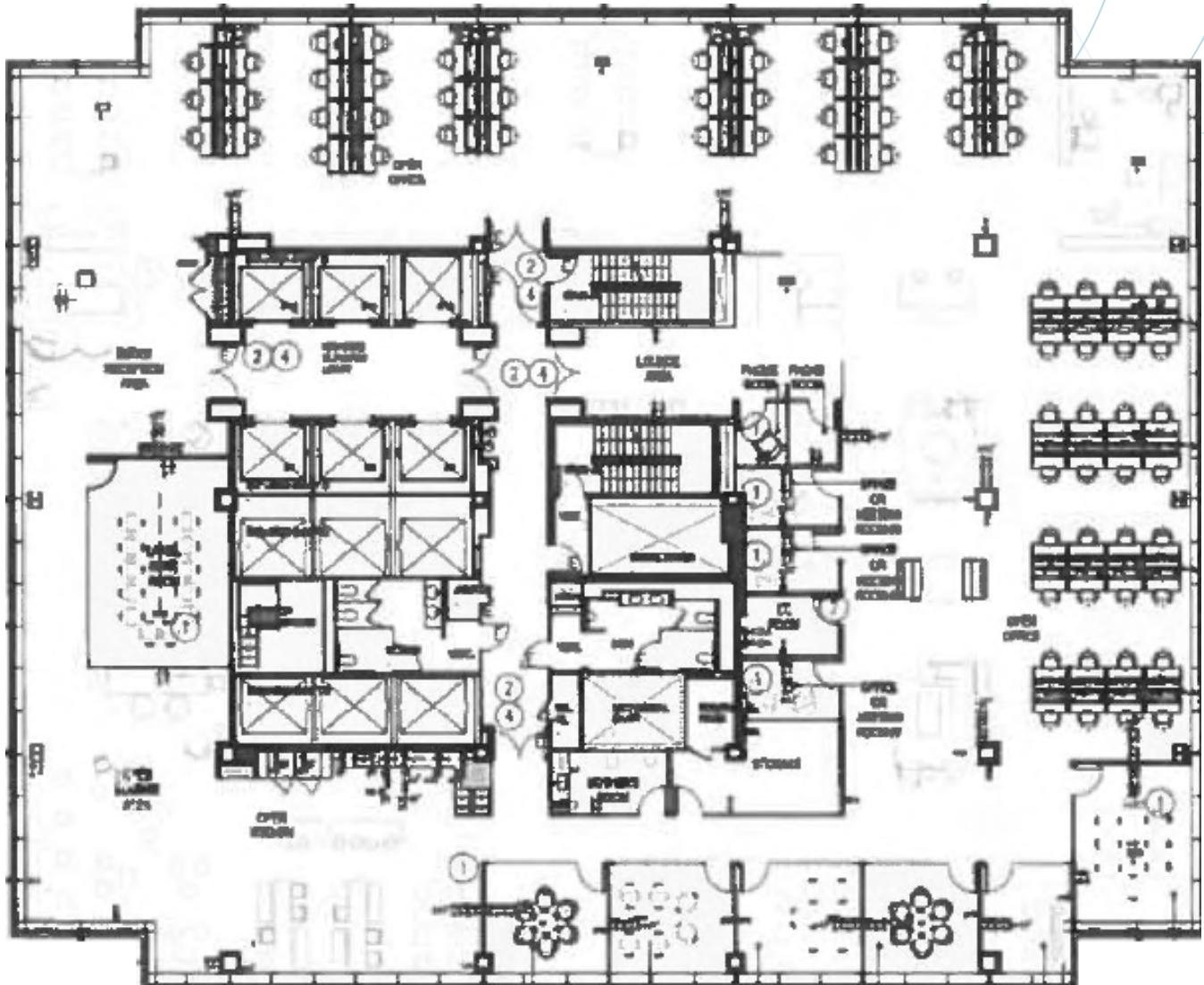
415 867 4221

CA Lic# 01322637



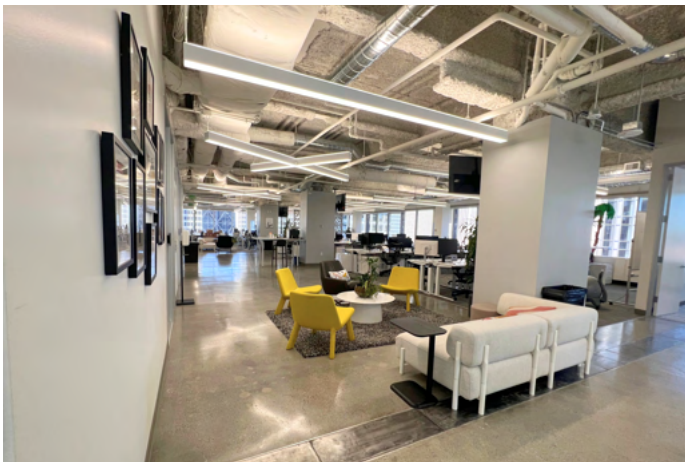
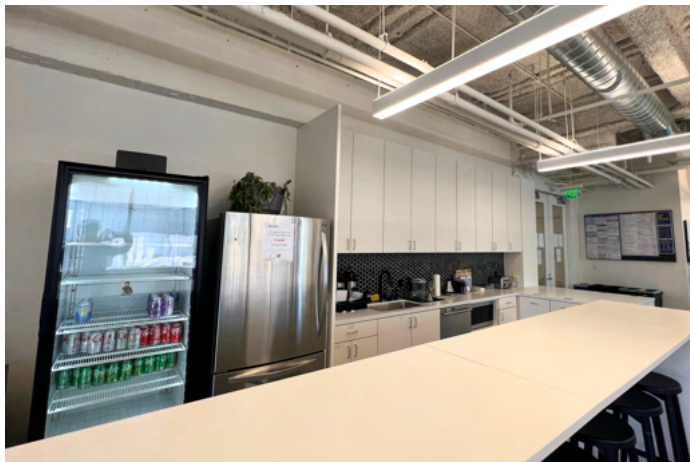
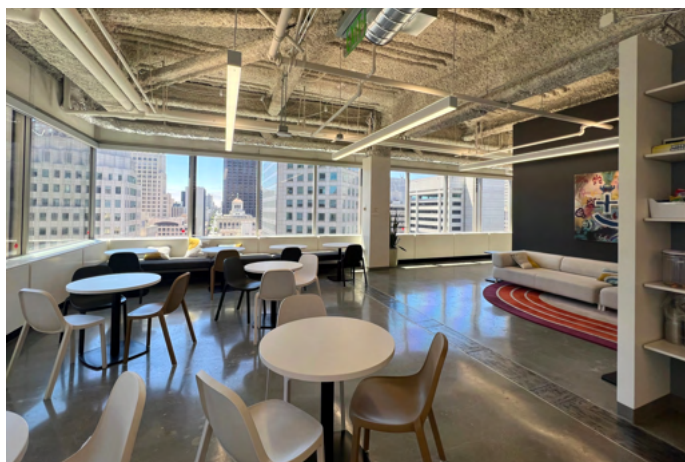
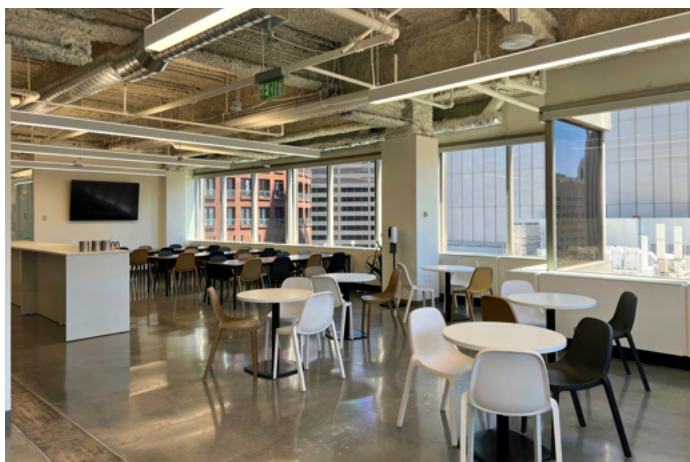
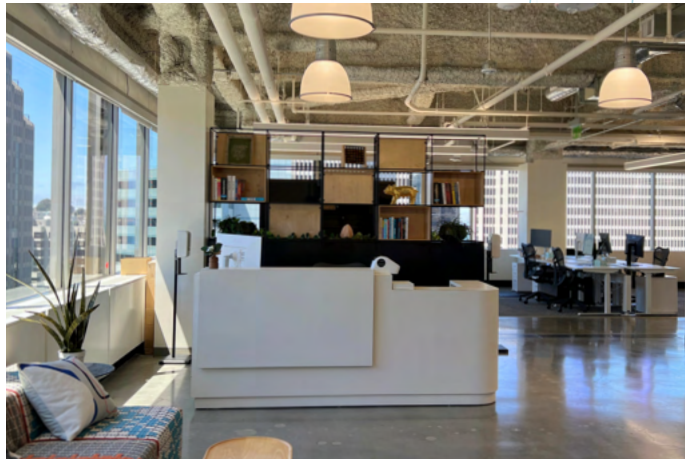
100 Pine St.

20th Floor | 13,427 RSF | Term Through March 2027



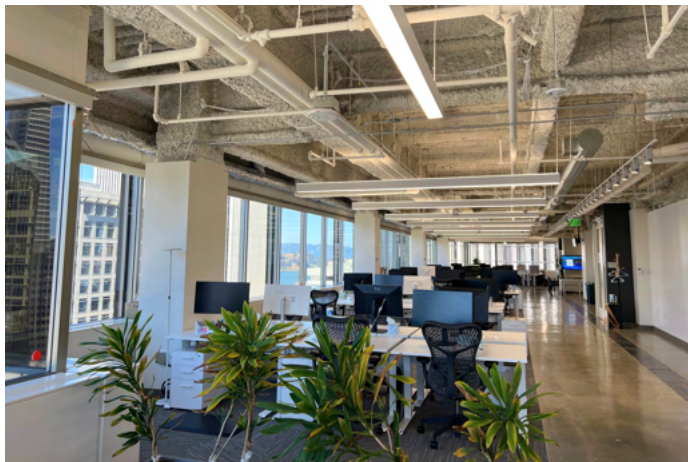
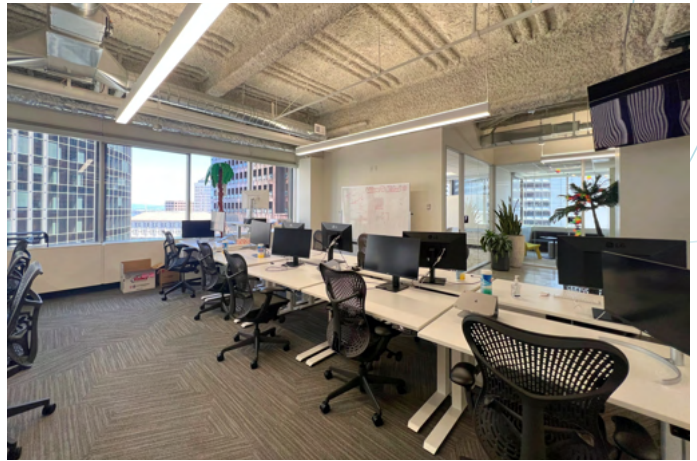
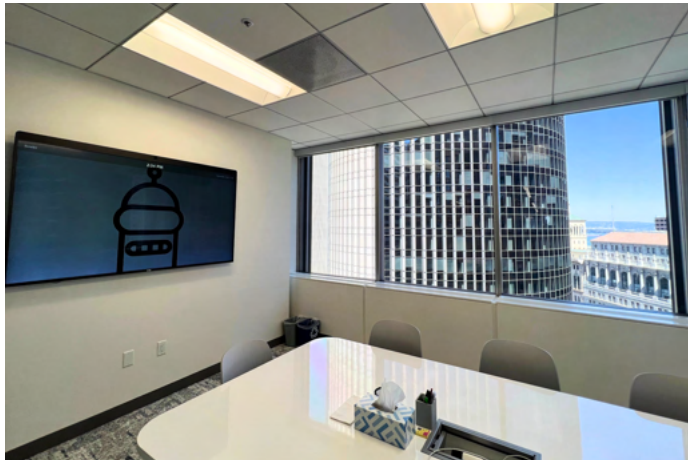
- Beautifully built out plug & play full floor
- Amazing light and views of the bay
- One large boardroom
- 6 medium conference rooms
- 90 workstations
- 5 phone rooms
- Formal reception
- Mothers room
- Large kitchen and all hands space

100 Pine St.



Although information has been obtained from sources deemed reliable, JLL does not make any guarantees, warranties or representations, express or implied, as to the completeness or accuracy as to the information contained herein. Any projections, opinions, assumptions or estimates used are for example only. There may be differences between projected and actual results, and those differences may be material. JLL does not accept any liability for any loss or damage suffered by any party resulting from reliance on this information. If the recipient of this information has signed a confidentiality agreement with JLL regarding this matter, this information is subject to the terms of that agreement. ©2023. Jones Lang LaSalle IP, Inc. All rights reserved.

100 Pine St.



Although information has been obtained from sources deemed reliable, JLL does not make any guarantees, warranties or representations, express or implied, as to the completeness or accuracy as to the information contained herein. Any projections, opinions, assumptions or estimates used are for example only. There may be differences between projected and actual results, and those differences may be material. JLL does not accept any liability for any loss or damage suffered by any party resulting from reliance on this information. If the recipient of this information has signed a confidentiality agreement with JLL regarding this matter, this information is subject to the terms of that agreement. ©2023. Jones Lang LaSalle IP, Inc. All rights reserved.