



±50,642 SF Available

For lease

2290 Cordelia Road | Fairfield, CA
±50,642 SF Warehouse Space

10 dock high loading doors | 3 grade-level loading doors
Suites C & D | 30' clear height | Fenced yard space

Building Highlights

2290 Cordelia Road is located within Solano Commerce Center, a 10-building light industrial, R&D and distribution complex totaling 365,439 SF, located in Fairfield, CA. The project is conveniently located just one mile from the intersection of Interstate 80 and Highway 12.

Solano Commerce Center Site Plan



Specifications

- **±50,642 SF warehouse space**

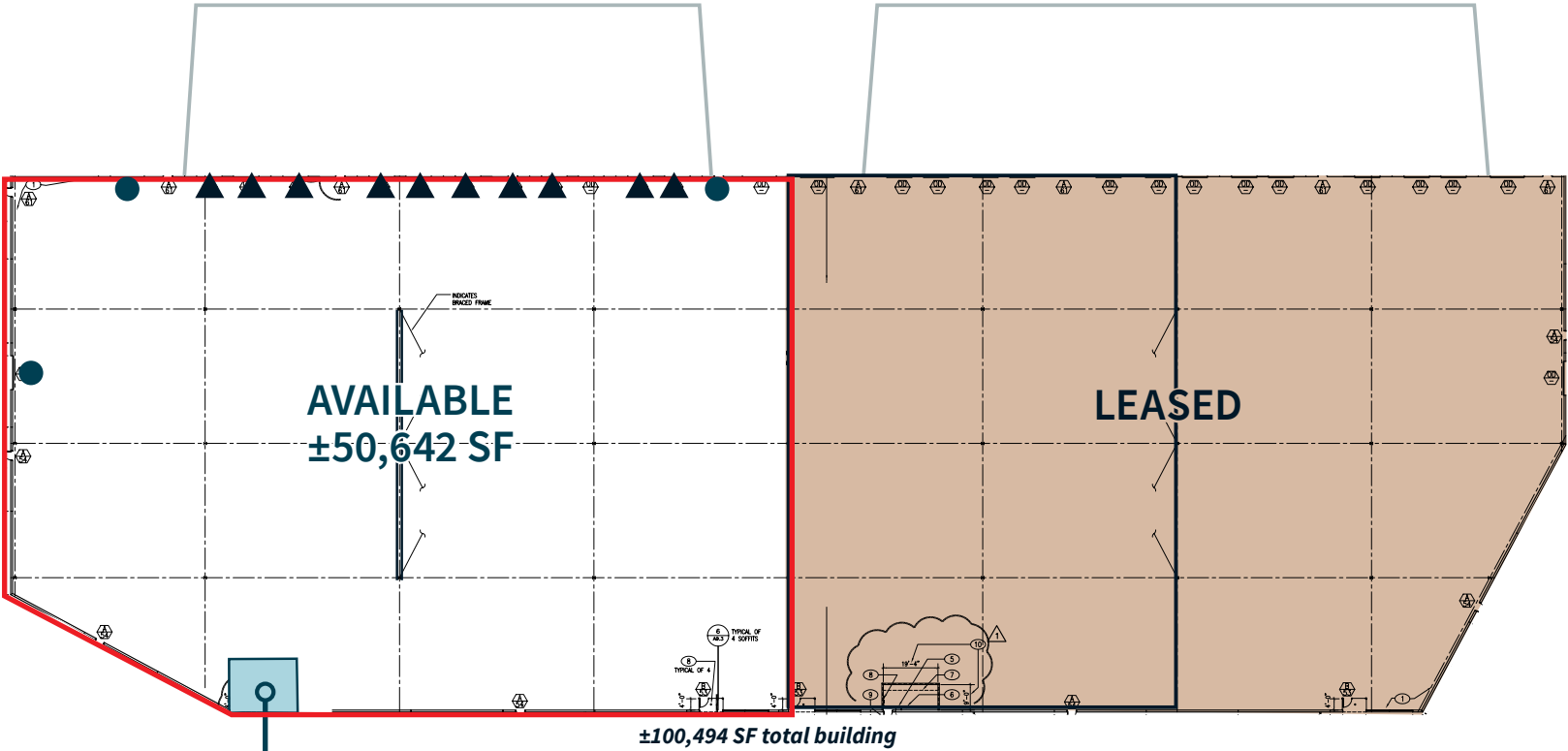
- Includes ±400 SF office, 2 restrooms
- ±30' clear height
- Warehouse skylights
- LED motion sensor warehouse lighting
- 400a, 277/480v (2 panels @ 200a each)
- 47'6" x 68'9" column spacing
- Truck court fenced
- ESFR sprinkler system

- **10 dock-high loading doors**

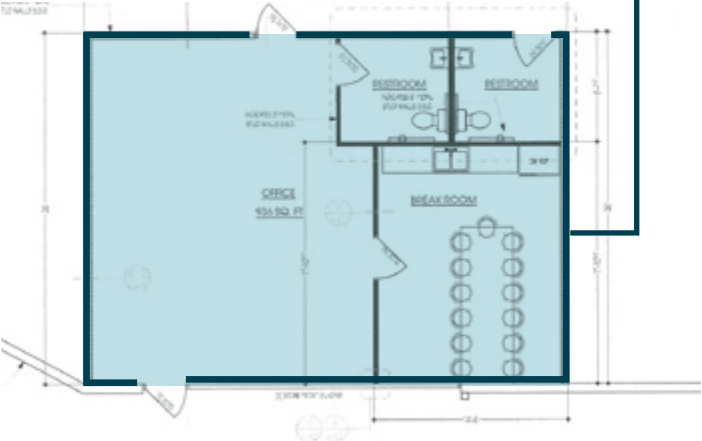
- 3 docks with 40,000 lb Rite-Hite hydraulic levelers with shelters
- 2 docks with 35,000 lb mechanical levelers with shelters
- Rite-Hite Dok-Loks
- Dock lights
- Quad electrical outlets

- **3 grade-level loading doors**

Floorplan



Office space floor plan (±400 SF)



- ▲ Dock High Door
- Grade-Level Door

2290 Cordelia Road / Fairfield, CA



Corporate Neighbors



For more information, please contact:

Chris Neeb

RE Lic# 01185434

chris.neeb@jll.com

+1 707 495 7777

Matt Bracco

RE Lic# 01324612

matt.bracco@jll.com

+1 925 200 3537

Glen Dowling

RE Lic# 00890450

glen.dowling@jll.com

+1 415 299 6868

Although information has been obtained from sources deemed reliable, neither Owner nor JLL makes any guarantees, warranties or representations, express or implied, as to the completeness or accuracy as to the information contained herein. Any projections, opinions, assumptions or estimates used are for example only. There may be differences between projected and actual results, and those differences may be material. The Property may be withdrawn without notice. Neither Owner nor JLL accepts any liability for any loss or damage suffered by any party resulting from reliance on this information. If the recipient of this information has signed a confidentiality agreement regarding this matter, this information is subject to the terms of that agreement. ©2024. Jones Lang LaSalle IP, Inc. All rights reserved. Jones Lang LaSalle Brokerage, Inc. RE Lic# 01856260