


Marion-Williamsport Rd E

Columbus Sandusky Rd N

For Sale

Marion-Williamsport Rd E
Marion, OH 43302

± 263 acres available

 **JLL** SEE A BRIGHTER WAY

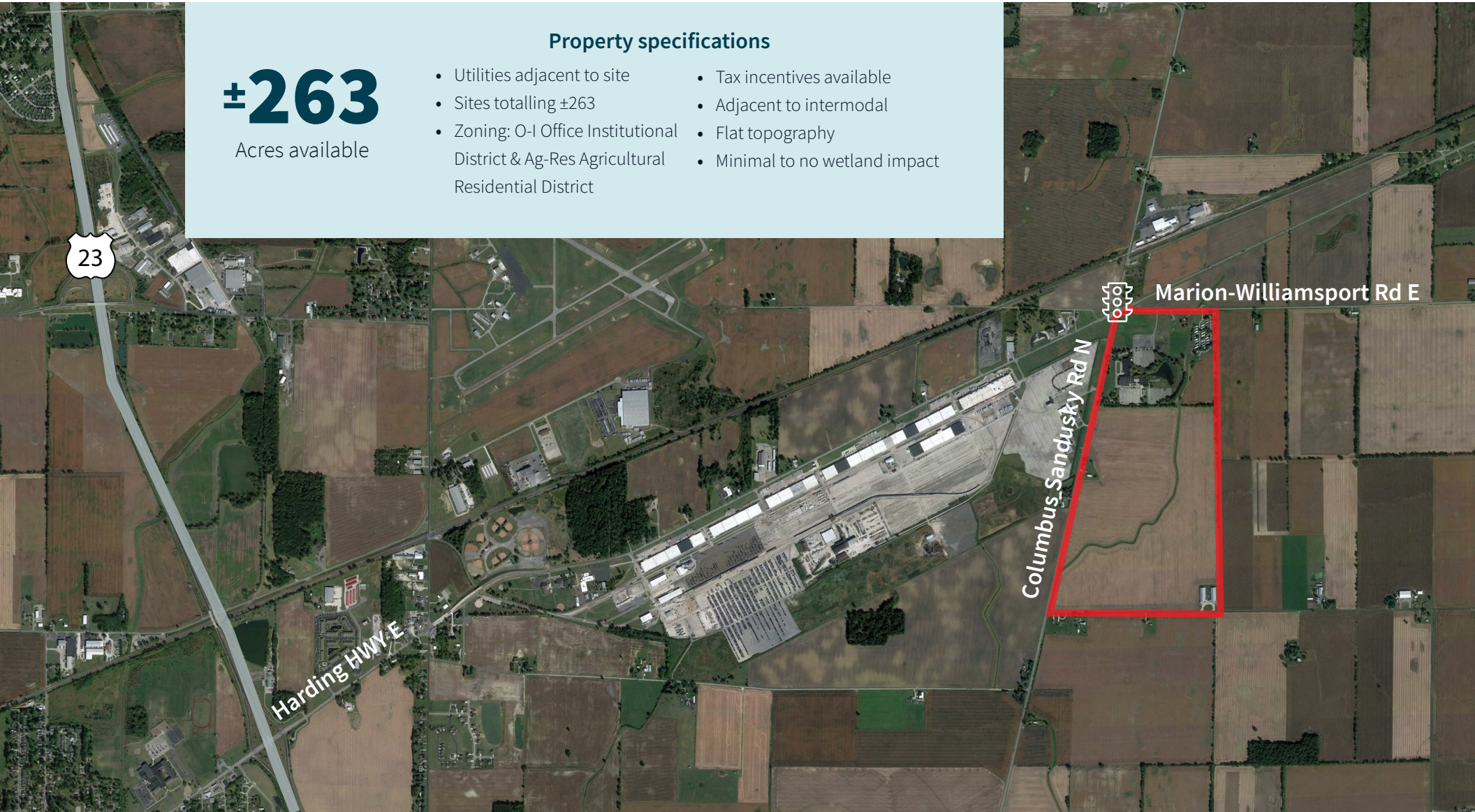
Aerial

±263

Acres available

Property specifications

- Utilities adjacent to site
- Sites totalling ±263
- Zoning: O-I Office Institutional District & Ag-Res Agricultural Residential District
- Tax incentives available
- Adjacent to intermodal
- Flat topography
- Minimal to no wetland impact

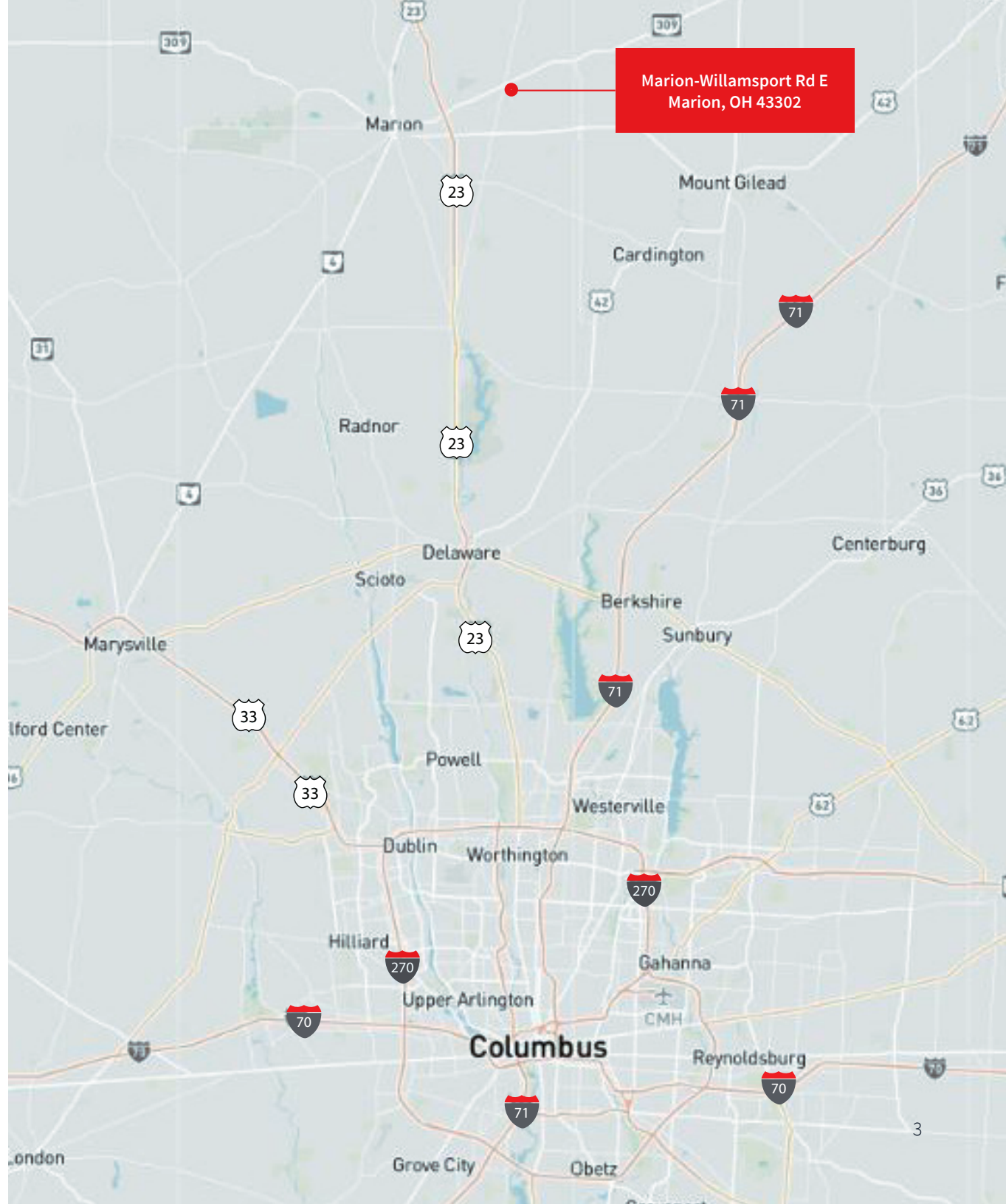


Marion-Williamsport Rd E / Marion, Ohio

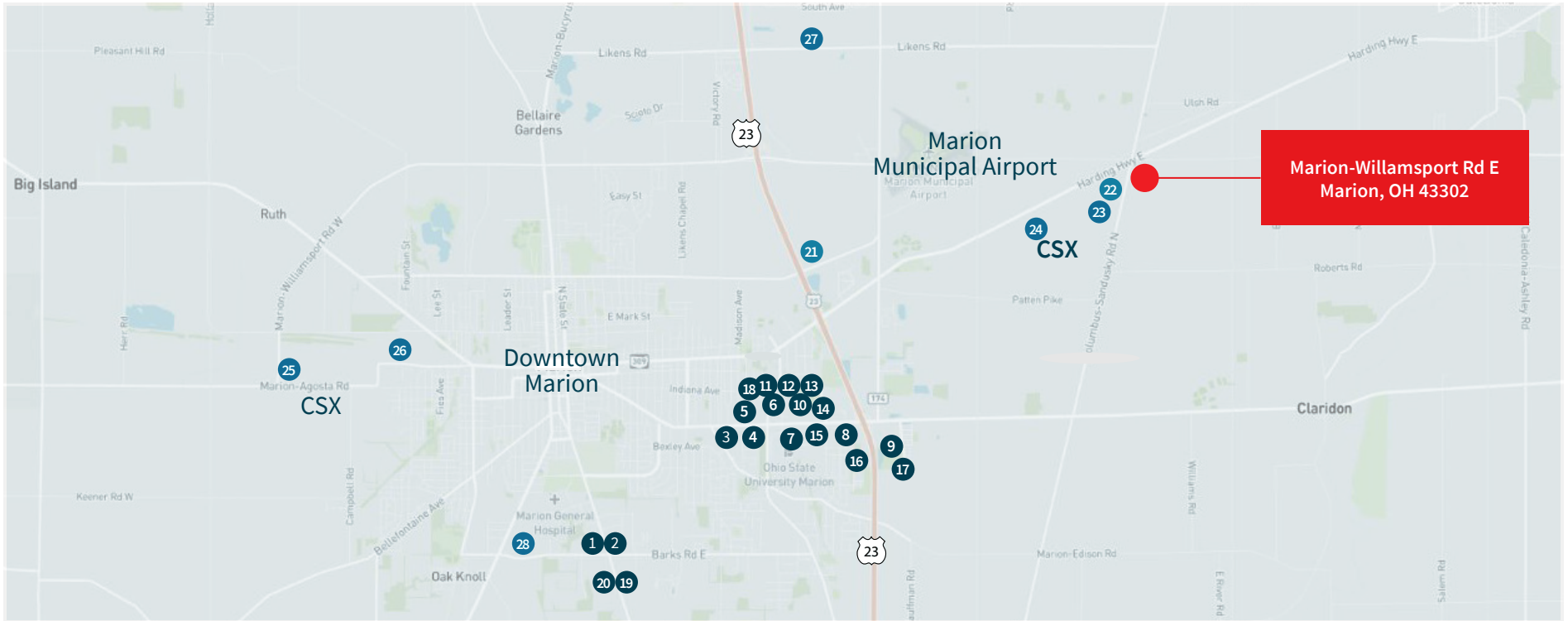
Regional access

Marion is a progressive city that enjoys exceptional benefits in terms of transportation, convenience and proximity to markets. Marion County is situated in north central Ohio's rich agricultural area. The majority of the United States' eastern, northern and mid-western metropolitan markets are within easy reach. Approximately two-thirds of the U.S. and Canadian markets are within a day's truck drive from Marion.

 23	3 miles	 71	16 miles
 33	31 miles	 270	34 miles
 70	Columbus 43 miles	 70	46 miles



Amenities & corporate neighbors



- | | | | | |
|------------------|------------------------|---------------------------|---------------------------|-----------------------------|
| 1 Burger King | 7 Buffalo Wild Wings | 13 T.J. Maxx | 19 Kroger | 25 Whirlpool Distribution |
| 2 Taco Bell | 8 Bob Evans | 14 Office Depot | 20 McDonald's | 26 The Scotts Co. |
| 3 Wendy's | 9 Steak 'n Shake | 15 Big Lots | 21 Sika Corporation | 27 Buckeye Industrial Park |
| 4 Little Caesars | 10 McDonald's | 16 Rural King | 22 Saddle Creek Logistics | 28 Marion Industrial Center |
| 5 Red Lobster | 11 Walmart Supercenter | 17 Meijer | 23 Owens Corning | |
| 6 Applebee's | 12 Kroger | 18 Ollie's Bargain Outlet | 24 Wyandot Snacks | |

Workforce

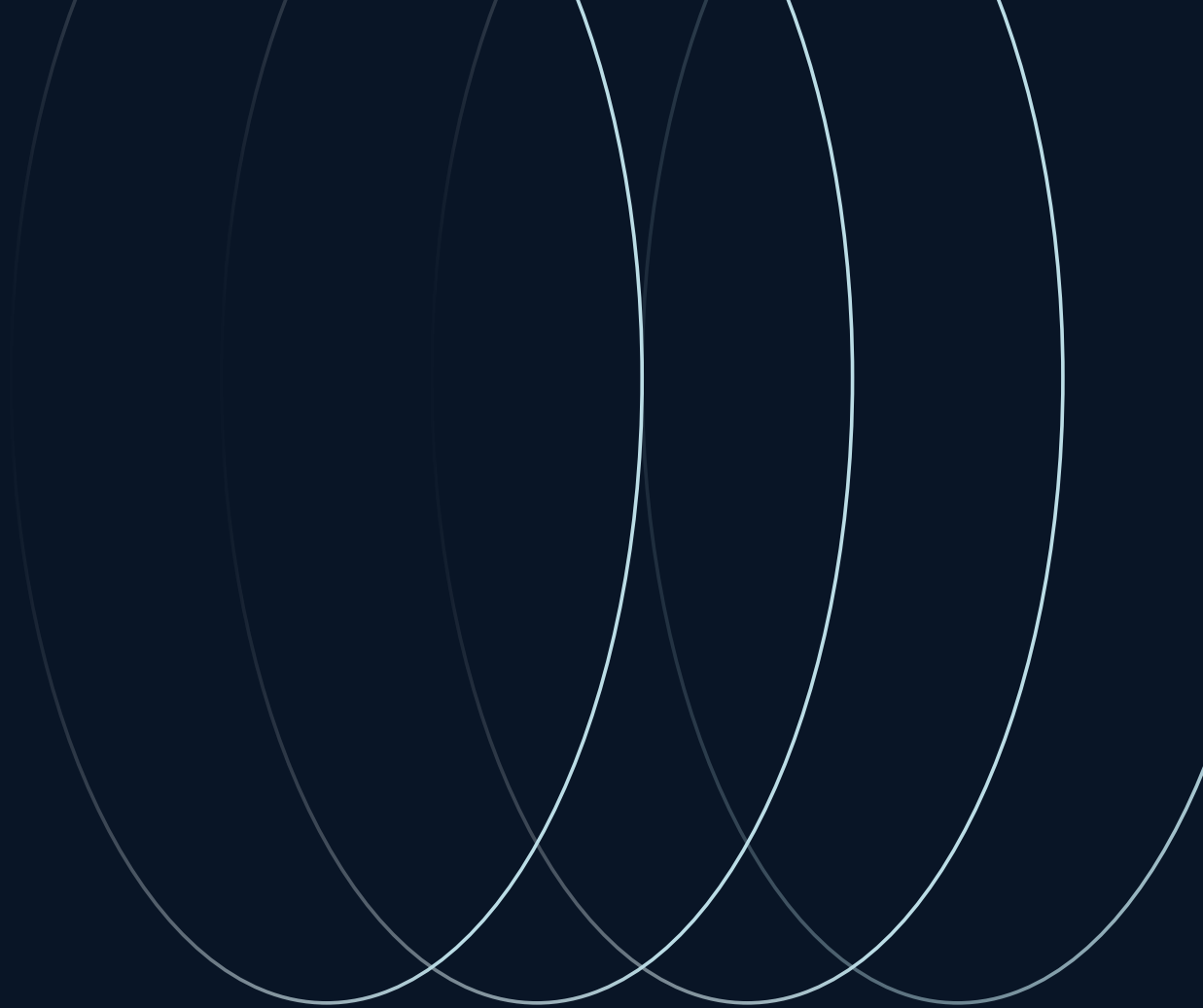
Marion, Ohio is a community designed for industry leaders and their employees. The region is known for its accessibility through transportation, education and workforce development. As America’s Workforce Development Capital®, there is synergy between local schools and companies as students are trained to match the skills needed by area employers.

Employee population	28,340
Households	24,478
Residents	65,096
Median age	40.4
Median household income	\$42,966

Major manufacturers

Employer	Industry	Employees
Whirlpool Corporation	Appliance manufacturing	2,344
Silver Line Windows	Manufacturing and distribution of windows and doors	600
Wyandot Inc.	Plant-based snack production, distribution, private label services	400
Piston Automotive LLC	Manufacturing of brake modules	330
Nucor Steel Marion, Inc.	Steel manufacturing/mill	258
Mennel Milling	Food production for various brands	263
Union Tank Car Company	Rail tank car manufacturing and refurbishing	263
Graphic Packaging International, Inc.	Paperboard and integrated paperboard solutions for consumer products	263
US Yachiyo, Inc.	Manufacturing of plastic fuel tanks	220
ArcelorMittal	Manufacturing of tubular steel products	104

Largest non-industrial employers	Employees
OhioHealth Marion General Hospital	769
Marion City Schools	600
The Kroger Co.	432

**JLL****Joe Davis**joseph.davis@jll.com

+1 (614) 460 4425

Josh Weithmanjosh.weithman@jll.com

+1(614) 460 4410

Matthew Collinsmatthew.collins@jll.com

+1(614) 460 4483

Although information has been obtained from sources deemed reliable, neither Owner nor JLL makes any guarantees, warranties or representations, express or implied, as to the completeness or accuracy as to the information contained herein. Any projections, opinions, assumptions or estimates used are for example only. There may be differences between projected and actual results, and those differences may be material. The Property may be withdrawn without notice. Neither Owner nor JLL accepts any liability for any loss or damage suffered by any party resulting from reliance on this information. If the recipient of this information has signed a confidentiality agreement regarding this matter, this information is subject to the terms of that agreement. © 2024 Jones Lang LaSalle IP, Inc. All rights reserved.