



201

CALIFORNIA

Premium corner
retail space for lease

3,300 sq. ft. - 11,100 sq. ft.
201 California, San Francisco, CA



Jones Lang LaSalle Brokerage, Inc. Real Estate License #: 01856260

THE BUILDING

The heart of the *financial* *district*

201 California Street enjoys a prime location at the corner of California Street and Front Street, one of the West Coast's most sought-after commercial corridors. With its enviable location, 201 California is enveloped by a myriad of conveniences, including outstanding public transportation options, a plethora of trendy shops and boutiques, an array of top-notch dining establishments, luxury hospitality offerings, and a host of beloved destinations for both Bay Area resident and visitors alike.



AREA DEMOGRAPHICS



47,617

Daytime population



\$200,001

Median household income



\$1,441,581

Median home value



37.8

Median age



\$317,619

Average household income

AMENITY MAP

201
CALIFORNIA

THE EMBARCADERO

THE EMBARCADERO

PORT OF SAN
FRANCISCO

San Francisco
4th & King Street

Restaurants

- 1 Ferry Building
- 2 One Market
- 3 Americano
- 4 Boulevard
- 5 The One Hotel, Terrane
- 6 Yank Sing
- 7 Bluestone Lane
- 8 Ozumo
- 9 Epic Steak
- 10 Prospect
- 11 Sweetgreen
- 12 International Smoke
- 13 Town Hall
- 14 Rincon Center
- 15 Osha Thai
- 16 Pied Piper
- 17 Waterbar
- 18 Benu
- 19 Saison
- 20 Fly Trap
- 21 21st Amendment
- 22 Local Kitchen & Wine
- 23 Spice Kit
- 24 Philz Coffee
- 25 Gabby Cafe
- 26 Mendocino Farms
- 27 Town's End Bakery
- 28 Crossroads Cafe
- 29 Delancey Street
- 30 House of Hunan
- 31 Paragon Restaurant + Bar
- 32 Proper Food
- 33 Tres
- 34 Ozone Thai
- 35 La Briciola
- 36 Garaje
- 37 Canton Seafood + Dim Sum
- 38 Portico
- 39 Sushi Fantastic
- 40 Slanted Door
- 41 Super Duper Burger
- 42 Mili Wine Bar
- 43 Red Dog Restaurant + Bar
- 44 STK
- 45 Gott's Roadside
- 46 Angler
- 47 Akikos

Shopping

- 1 Athleta
- 2 Ann Taylor
- 3 Banana Republic
- 4 Old Navy
- 5 Lucy Activewear
- 6 Gap
- 7 Woodlands Market
- 8 Publique Living
- 9 StretchLab
- 10 GNC
- 11 Financial District Hardware
- 12 The North Face
- 13 Luxury Pets

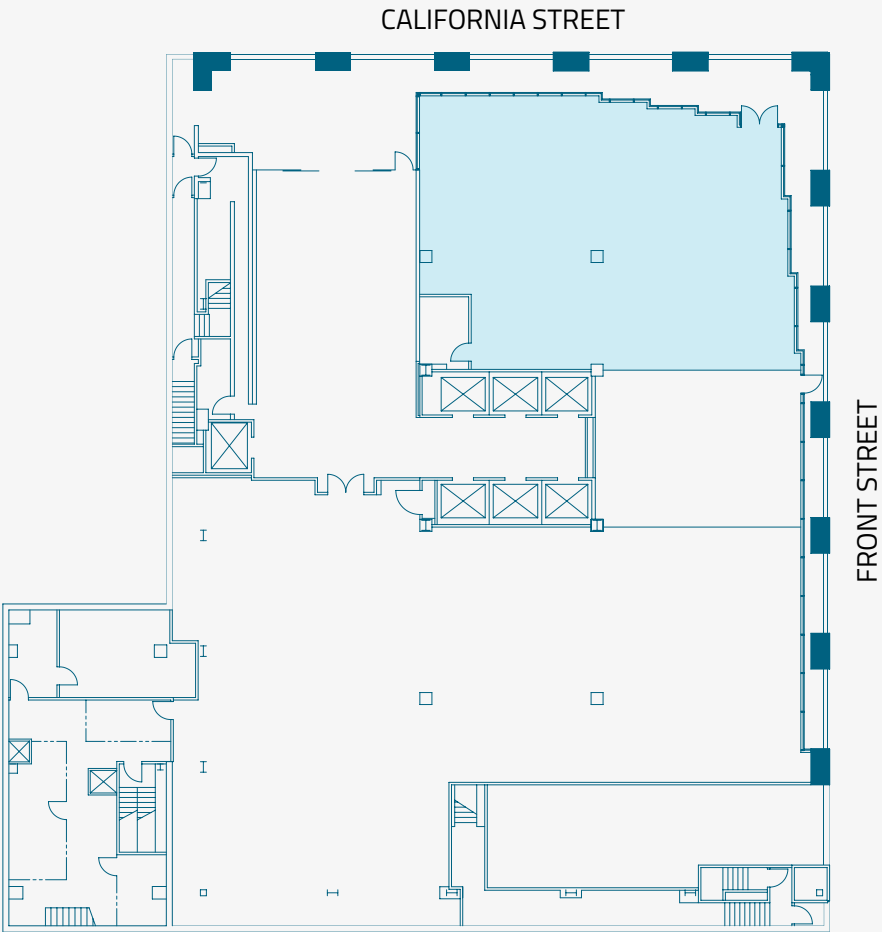
Fitness

- 1 Flywheel Sports
- 2 The Dailey Method
- 3 TruFusion
- 4 Equinox
- 5 Core Power Yoga
- 6 Soul Cycle
- 7 Van Buren Fitness
- 8 Bay Club at The Gateway

Entertainment

- 1 SF Museum of Modern Art
- 2 Moscone Convention Center
- 3 California Historical
- 4 Society Oracle Park
- 5 SF Railway Museum
- 6 Theatre Rhinoceros
- 7 Landmark Theater
- 8 Eagle Club Indoor Golf
- 9 SPiN

PREMISES



First floor

+/- 3,300 sq. ft.



Highly visible
hard corner
location



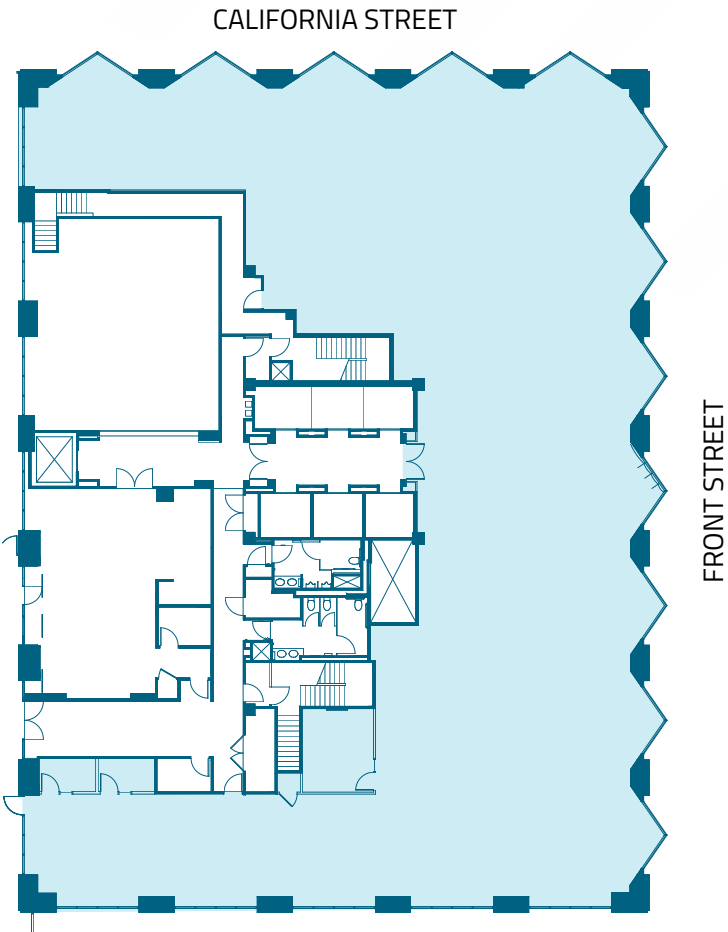
Ample space
volume with 17'
ceiling heights



Strong glass
lines



Suitable for limited and
full service restaurants,
fitness, financial services
or general retail



Second floor

+/- 11,100 sq. ft.



Potential to
combine with hard
corner retail space



Open plan



Access to
outdoor space



Flexible zoning to
support office or
retail use

201

CALIFORNIA

Ben Lazzareschi

+1 415 228 3070

ben.lazzareschi@am.jll.com

RE License # 01414579

Laura Tinetti

+1 415 228 3072

laura.tinetti@am.jll.com

RE License # 01358500

David Kessler

+1 925 478 0386

david.kessler@jll.com

RE License #02112097



Jones Lang LaSalle Brokerage, Inc. Real Estate License #: 01856260. Although information has been obtained from sources deemed reliable, neither Owner nor JLL makes any guarantees, warranties or representations, express or implied, as to the completeness or accuracy as to the information contained herein. Any projections, opinions, assumptions or estimates used are for example only. There may be differences between projected and actual results, and those differences may be material. The Property may be withdrawn without notice. Neither Owner nor JLL accepts any liability for any loss or damage suffered by any party resulting from reliance on this information. If the recipient of this information has signed a confidentiality agreement regarding this matter, this information is subject to the terms of that agreement. © 2017 Jones Lang LaSalle IP, Inc. All rights reserved.

