

STRATFORD

IMPERIAL CENTER



1009 SLATER RD., DURHAM, NC 27703

BUILDING INFO



BUILDING SIZE:
76,480 SF



**OUTDOOR
COLLABORATION
AREAS**



**WALKING TRAILS
THROUGHOUT THE PARK**



PARKING RATIO:
4 PER 1,000 RSF



**ON-SITE CHELSEA
CAFÉ OPEN FOR
BREAKFAST, LUNCH &
HAPPY HOUR**



FLOOR PLAN

SECOND FLOOR

 AVAILABLE



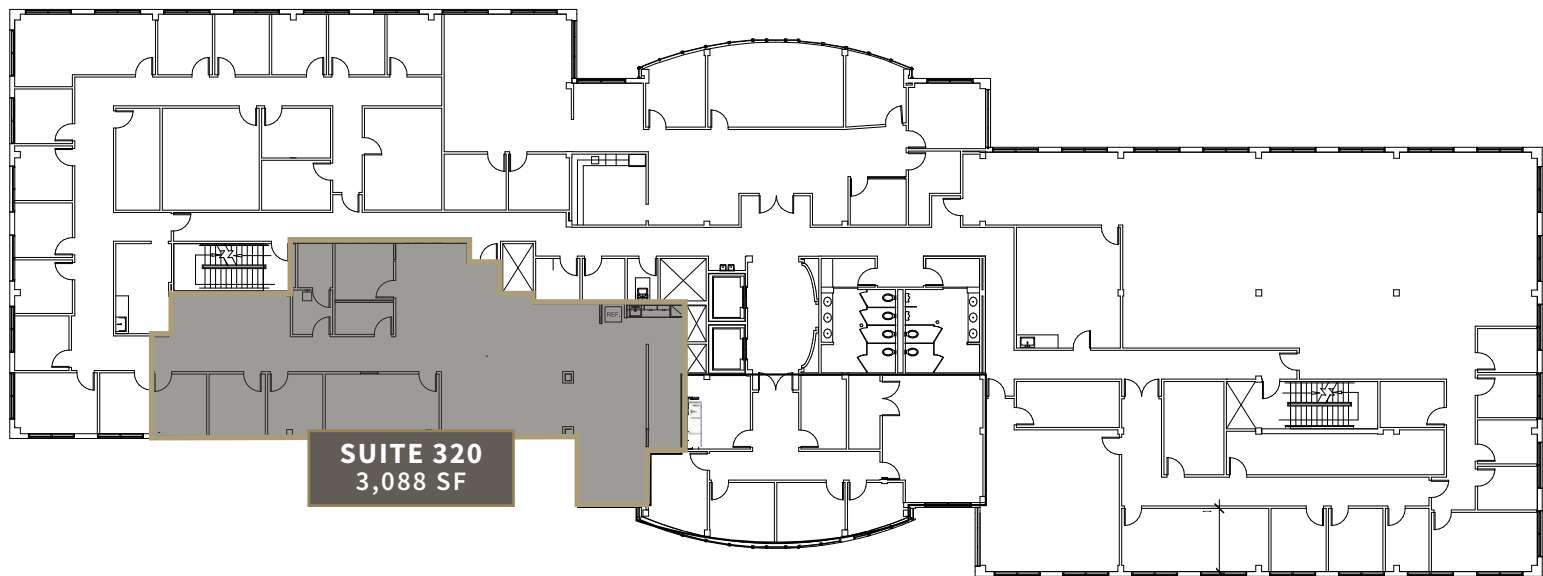
RENTAL RATE: \$30.50/SF

STRATFORD

FLOOR PLAN

THIRD FLOOR

 AVAILABLE



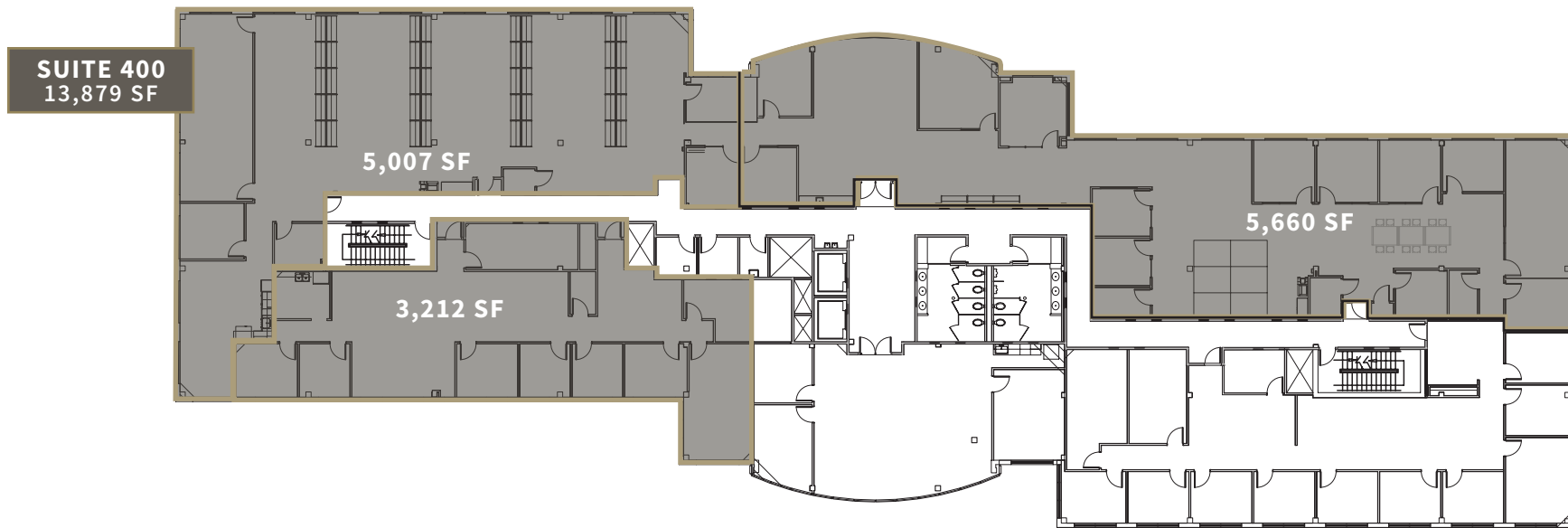
RENTAL RATE: \$30.50/SF

STRATFORD

FLOOR PLAN

FOURTH FLOOR

 AVAILABLE



RENTAL RATE: \$30.50/SF

STRATFORD

STRATFORD



CONTACT US

RDULEASING@AM.JLL.COM

919 851 9111

Although information has been obtained from sources deemed reliable, neither Owner nor JLL makes any guarantees, warranties or representations, express or implied, as to the completeness or accuracy as to the information contained herein. Any projections, opinions, assumptions or estimates used are for example only. There may be differences between projected and actual results, and those differences may be material. The Property may be withdrawn without notice. Neither Owner nor JLL accepts any liability for any loss or damage suffered by any party resulting from reliance on this information. If the recipient of this information has signed a confidentiality agreement regarding this matter, this information is subject to the terms of that agreement. ©2022. Jones Lang LaSalle IP, Inc. All rights reserved.