 **JLL** SEE A BRIGHTER WAY

For lease

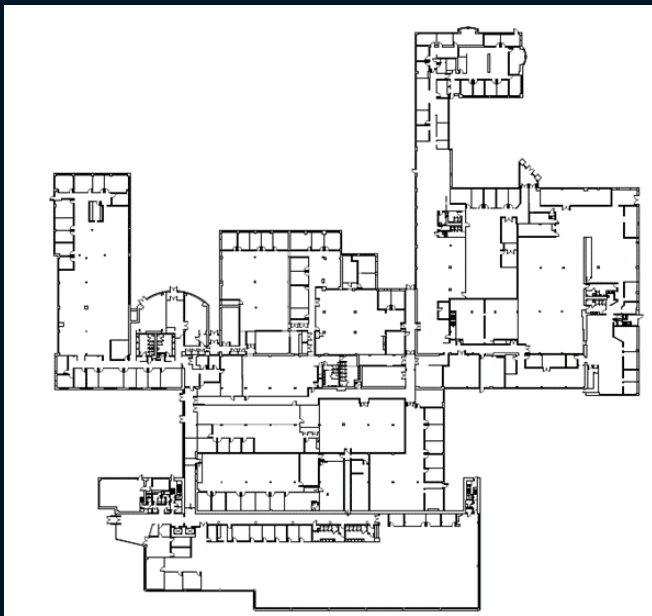
5,000 - 125,000 SF available for
office, R&D lab, or medical use

Property specifications

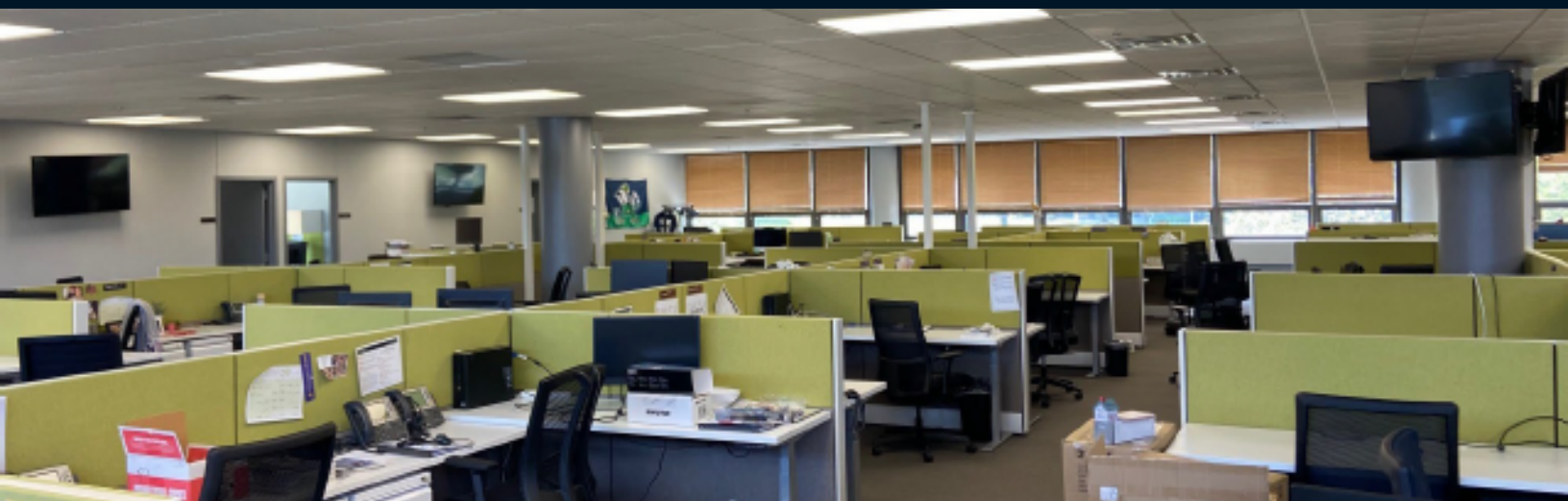
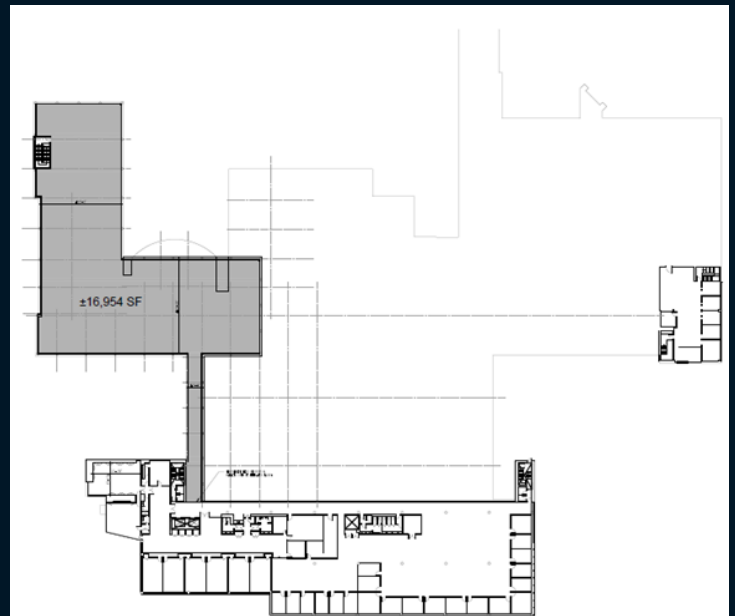
- Located at 1st Avenue and Moore Road
- Parking ratio - 7.00/1,000 SF
- \$24.50/SF + Electric

1100 1st Avenue King of Prussia, PA

1st floor - 101,500 SF



2nd floor - 23,500 SF



Scott Williams

Managing Director

scotta.williams@jll.com

+1 610 249 2259

Jones Lang LaSalle Brokerage, Inc.

550 E. Swedesford Road, Suite 260

Wayne, PA 19087

+1 610 249 2255

jll.com

Although information has been obtained from sources deemed reliable, neither Owner nor JLL makes any guarantees, warranties or representations, express or implied, as to the completeness or accuracy as to the information contained herein. Any projections, opinions, assumptions or estimates used are for example only. There may be differences between projected and actual results, and those differences may be material. The Property may be withdrawn without notice. Neither Owner nor JLL accepts any liability for any loss or damage suffered by any party resulting from reliance on this information. If the recipient of this information has signed a confidentiality agreement regarding this matter, this information is subject to the terms of that agreement. ©2024. Jones Lang LaSalle IP, Inc. All rights reserved.