



VALLEY VIEW POINT



2450 Valley View Ln, Irving, Texas 75062

120,900 SF



Jones Lang LaSalle Brokerage, Inc.

Building Highlights

Size: 120,900 SF (on 8.51 AC)

Spec Office: 2,930 SF

Loading: Rear Load

Dock Doors: 21

Drive Ins: 2

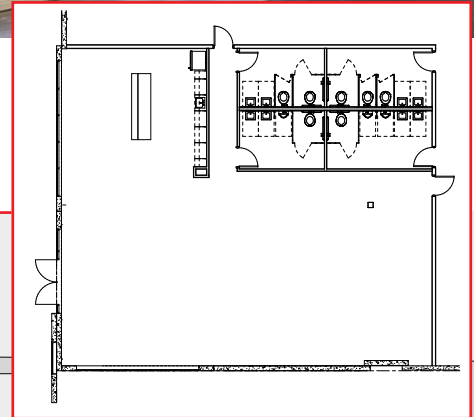
Clear Height: 32'

Trailer Parks: 29

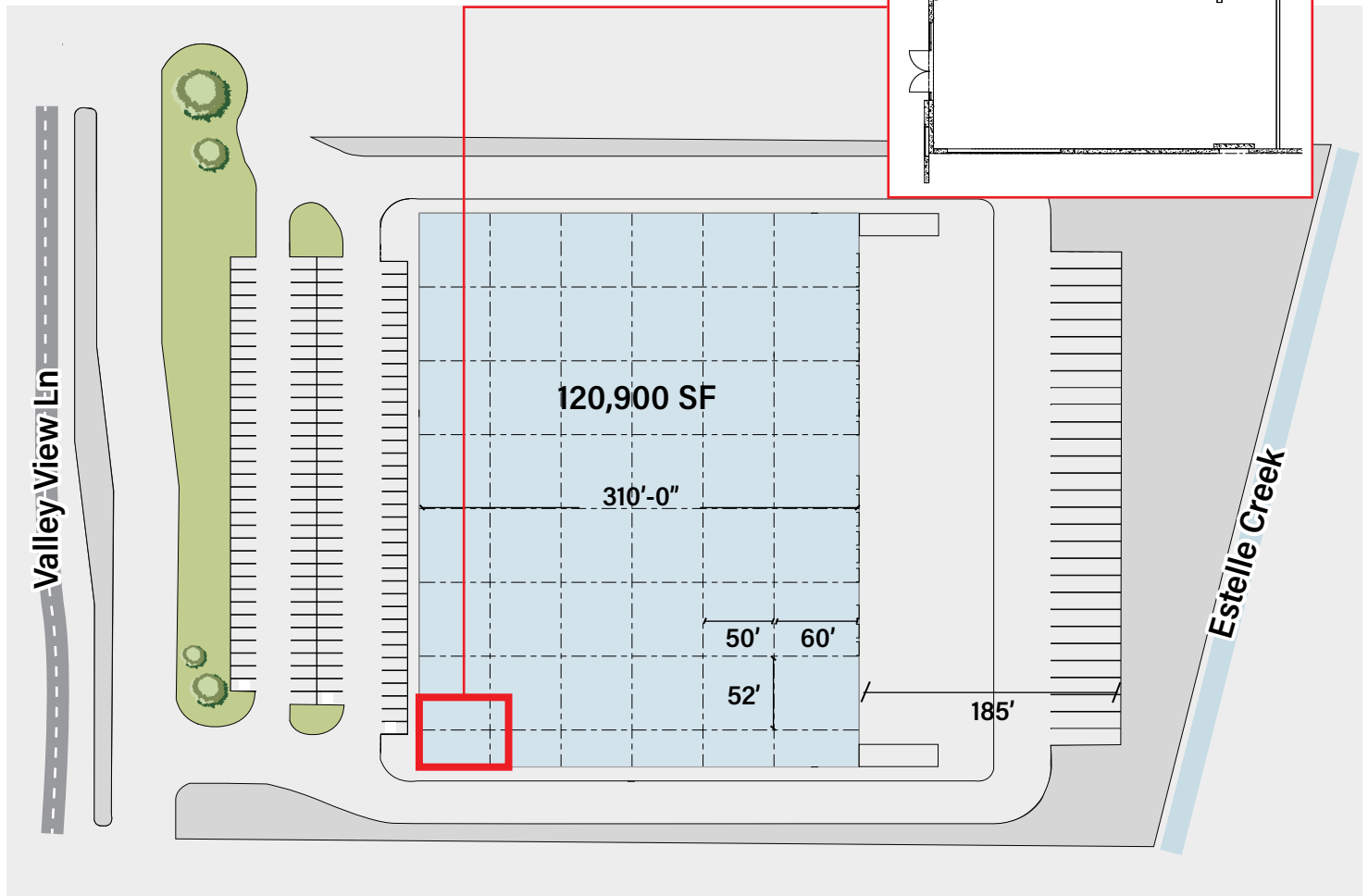
Car Parks: 141

Depth: 310'

Sprinklers: ESFR

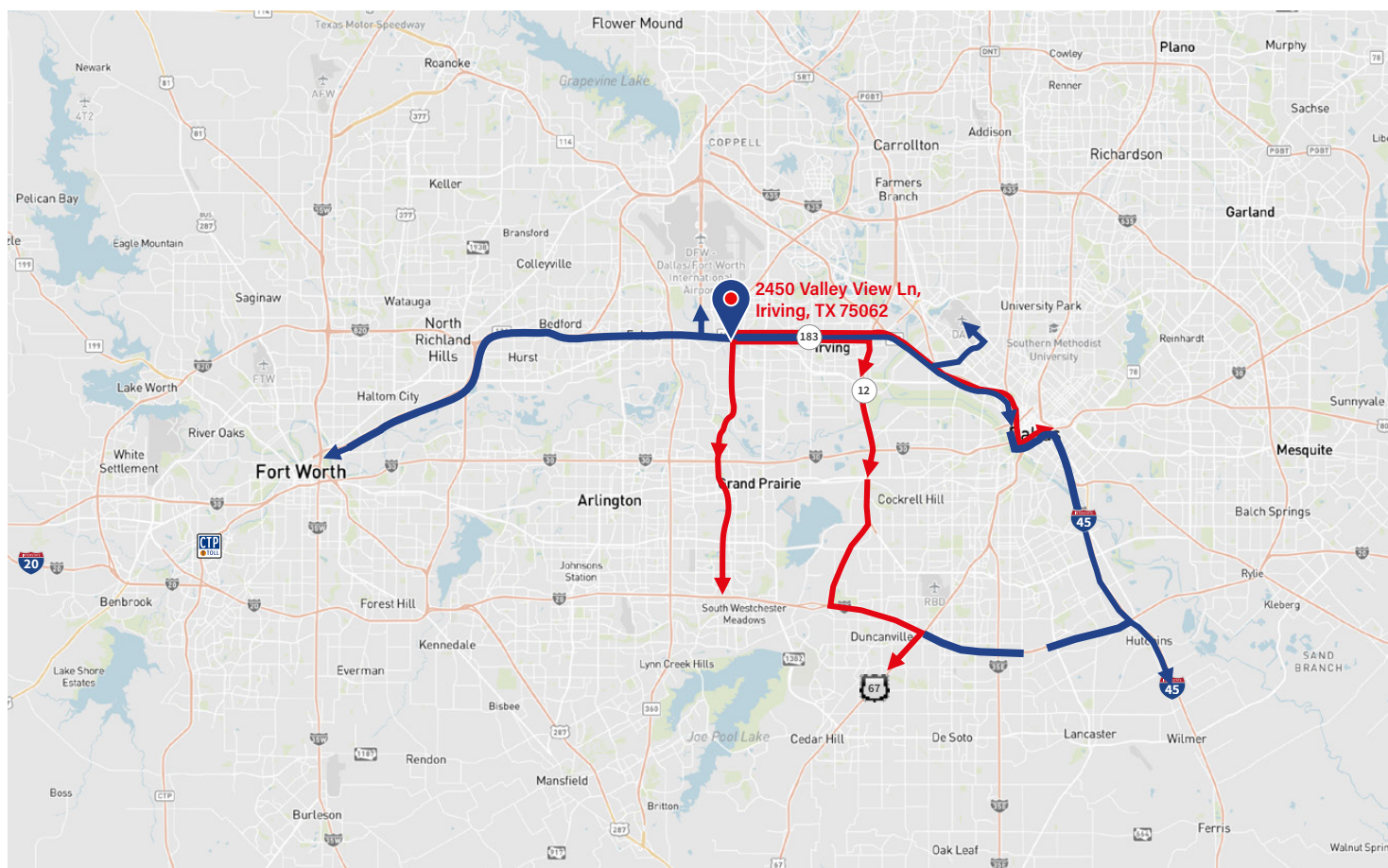


Site Plan





Map – Drive Times



Drive-times to major thoroughfares

| | | |
|------------|------------|------------|
| I-45 | 17 miles | 19 minutes |
| I-20 | 15 miles | 21 minutes |
| I-35E | 10 miles | 12 minutes |
| I-30 | 7.7 miles | 13 minutes |
| Highway 67 | 23.5 miles | 26 minutes |

Destinations via major thoroughfares

| | | |
|----------------|------------|------------|
| UP Intermodal | 29 miles | 32 minutes |
| Dallas CBD | 15 miles | 17 minutes |
| Love Field | 11 miles | 16 minutes |
| DFW Airport | 6 miles | 8 minutes |
| Fort Worth CBD | 21.5 miles | 26 minutes |



Contact Information:

Randy Touchstone
 randy.touchstone@jll.com
 +1 214 438 1533

Caleb McCoy, SIOR
 caleb.mccoy@jll.com
 +1 214 949 2084

Kodie Comby
 kodie.comby@jll.com
 +1 214 438 6192

JLL disclaimer (Texas): Although information has been obtained from sources deemed reliable, neither Owner nor JLL makes any guarantees, warranties or representations, express or implied, as to the completeness or accuracy as to the information contained herein. Any projections, opinions, assumptions or estimates used are for example only. There may be differences between projected and actual results, and those differences may be material. The Property may be withdrawn without notice. Neither Owner nor JLL accepts any liability for any loss or damage suffered by any party resulting from reliance on this information. If the recipient of this information has signed a confidentiality agreement regarding this matter, this information is subject to the terms of that agreement. ©2023 Jones Lang LaSalle IP, Inc. All rights reserved.

STAG
 INDUSTRIAL

JLL